



S'Arenal, Lluçmajor

REF. APM220320

Apartment for rent with Terrace in S'Arenal (Palma de Mallorca)

Features

- ✓ Heating
- ✓ Terrace
- ✓ Pool
- ✓ Security
- ✓ AACC
- ✓ Backyard
- ✓ Lift
- ✓ Has parking

Surface

138 m²

Bedrooms

3

Bathrooms

4

Price

1,500 €



One hundred metres from the beach, in a modern complex with garden areas and two swimming pools, we find this EXCELLENT GROUND FLOOR WITH FRONT GARDEN and a practical courtyard inside.

From the main door, we access to an entrance hall with built-in wardrobe, which divides the property into two areas. In the day area, there is a fully equipped kitchen with access to the patio and access to the laundry room. Next to it there is a spacious and bright living-dining room with a large window-door that gives access to the inner courtyard. From the patio there is access to the laundry room, spacious and very practical. An interior door also connects to the communal areas of

the complex. In the night area, there are three bedrooms. Two of them are double and one single, all of them with built-in wardrobes. The bedroom also has an en-suite bathroom with shower. The other two bedrooms share a full bathroom with bathtub. All the bedrooms have access to the front garden. The property has ducted air conditioning system and has just been completely cleaned and painted. The parking space, included in the rental price, is located in the same building and very close to the elevator that gives access to the flat. Immediate availability. Community fees and IBI included...

Contact us,
we will be happy to assist you,
to offer you more details and information.

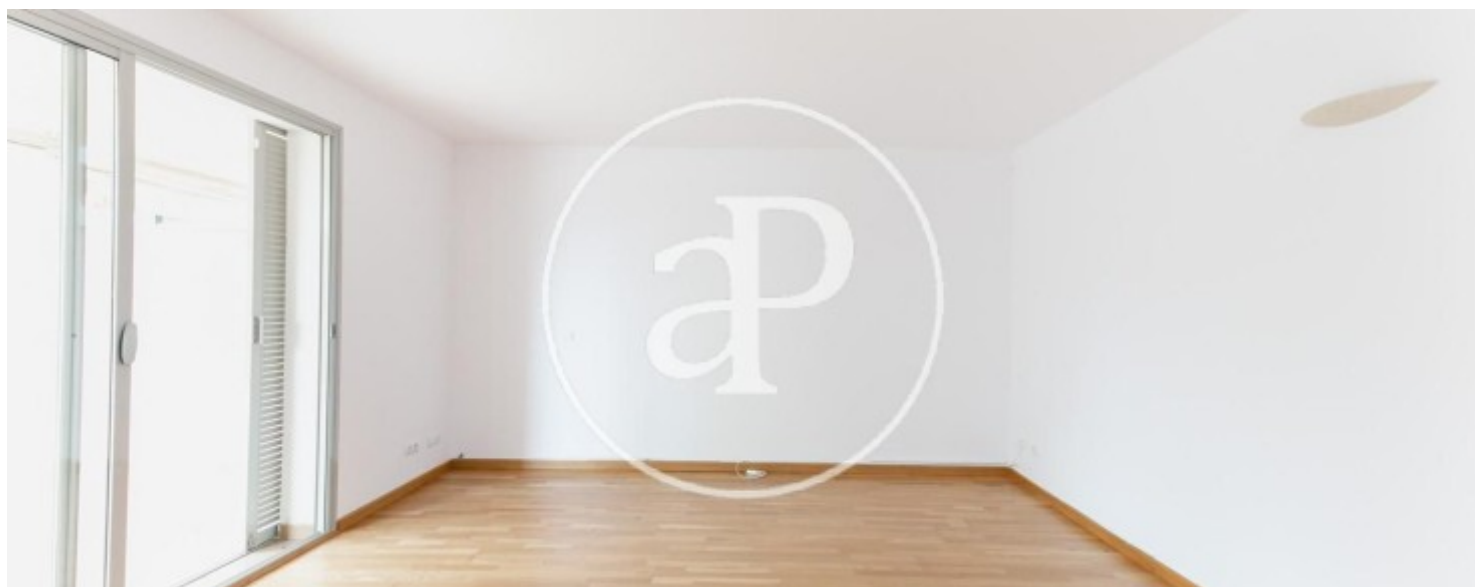
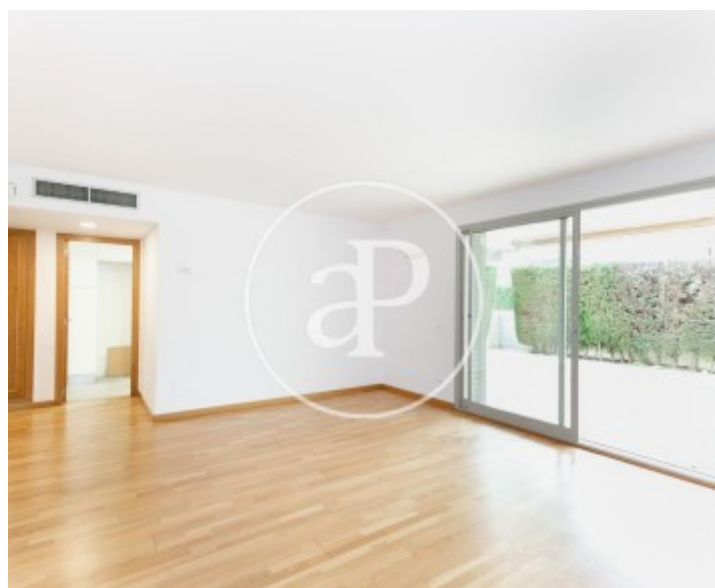
S'Arenal, Lluçmajor

REF. APM220320



S'Arenal, Lluçmajor

REF. APM220320



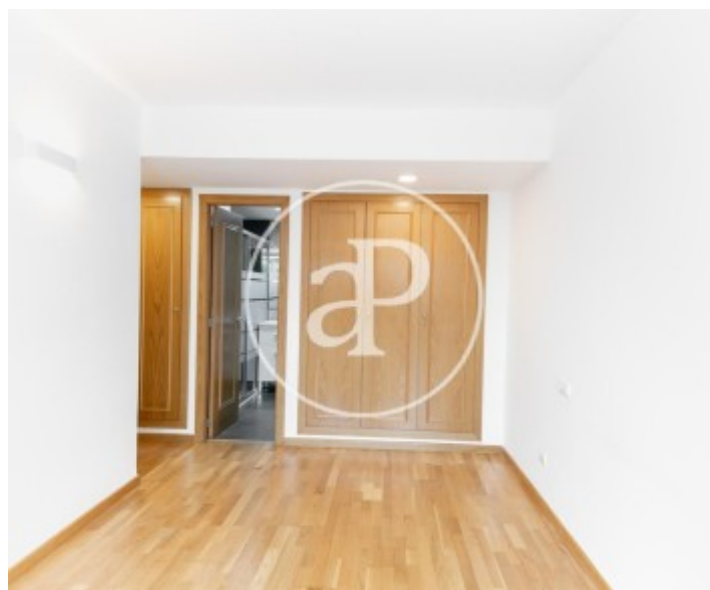
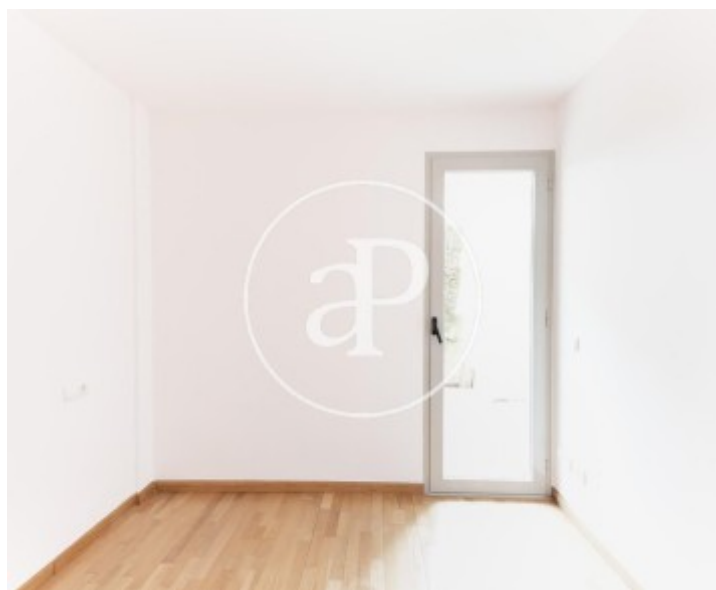
S'Arenal, Lluçmajor

REF. APM220320



S'Arenal, Lluçmajor

REF. APM220320



The information about any property is not binding to any offer or contract. Any verbal or written declaration made by aProperties with regards to the value or condition of the property should not be considered accurate or factual. The pictures make reference to some parts of the property at the times that they were taken. The areas, dimensions and distances that are given are approximate and should be checked by the client. The images are computer generated and are just an approximate indication of the real appearance of the property; these may change at any time. The information with regards to the property may also change at any time.

For **more information** or
to make an appointment

apropertiespalma@aproperties.es
Tel: 871 16 01 60
www.aproperties.es