

Llucmajor Interior, Llucmajor

REF. VPM2603029

Townhouse for Sale in Llucmajor

Features

- ✓ Boxroom
- ✓ Terrace
- ✓ Backyard

Price

610,000 €

Surface

283 m²

Bedrooms

5

Bathrooms

2



Located on a quiet residential street in the heart of Llucmajor, this townhouse offers an excellent opportunity to create a spacious, character-filled home in one of the most authentic areas of the town.

The property sits on a 190 m² plot and has a total of 283 m² built over two floors plus a basement. Its current layout includes five bedrooms and two bathrooms—one on each floor—along with generous spaces that allow for multiple renovation and redistribution possibilities. On the ground floor, you'll find the main living areas with access to a lovely, sunny private patio. This outdoor space is perfect for designing an al fresco dining area,

garden, or chill-out zone, and even allows for a pool to be incorporated into a renovation project, adding more value and comfort to the home. The upper floor houses three bedrooms and a bright terrace, perfect for enjoying the sun for most of the day. The house requires updating to meet modern aesthetic standards, but its solid structure, well-thought-out layout, and abundant natural light make it a project with enormous potential. It is an ideal property both for investors looking to enhance a home with Mallorcan character and for families wishing to design their dream home in the heart of...

Contact us,
we will be happy to assist you,
to offer you more details and information.

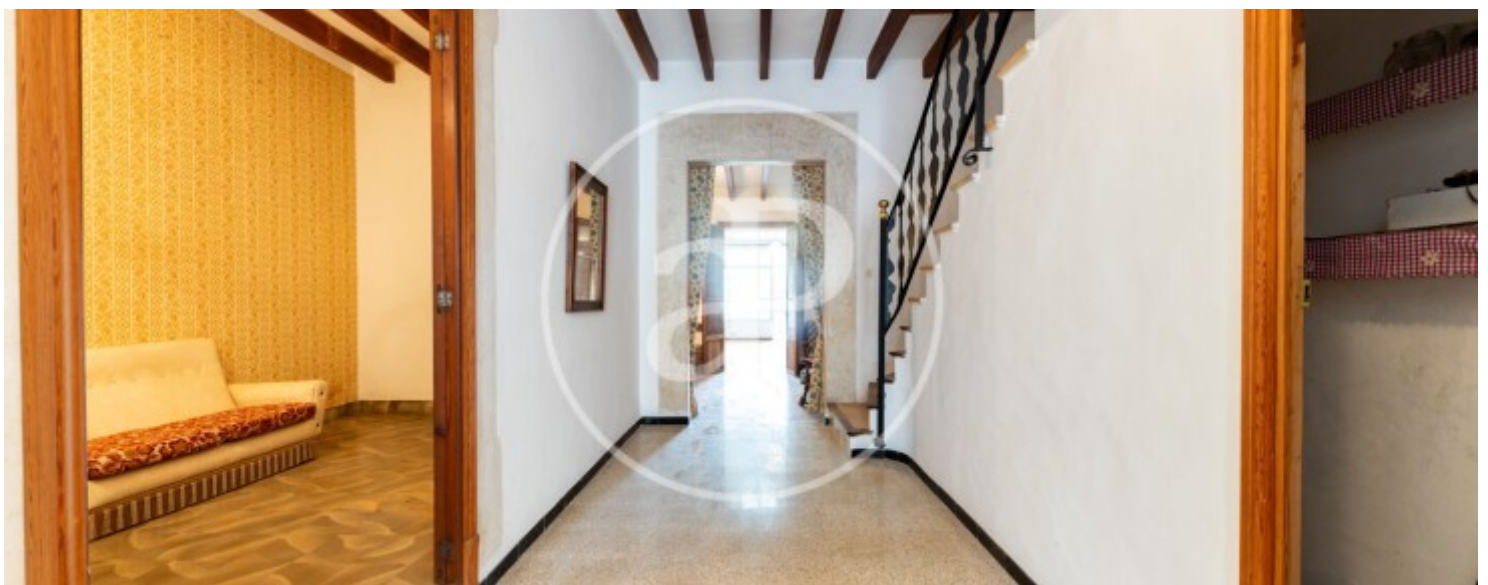
Llucmajor Interior, Llucmajor

REF. VPM2603029



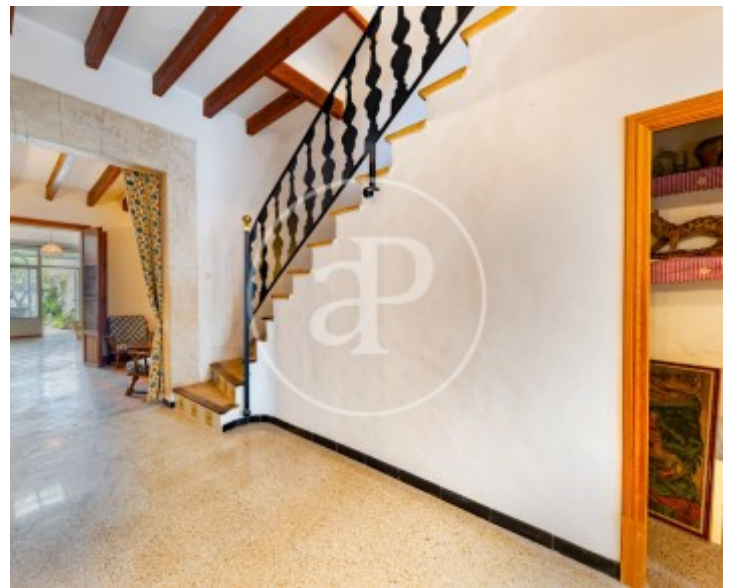
Llucmajor Interior, Llucmajor

REF. VPM2603029



Llucmajor Interior, Llucmajor

REF. VPM2603029



Llucmajor Interior, Llucmajor

REF. VPM2603029



The information about any property is not binding to any offer or contract. Any verbal or written declaration made by aProperties with regards to the value or condition of the property should not be considered accurate or factual. The pictures make reference to some parts of the property at the times that they were taken. The areas, dimensions and distances that are given are approximate and should be checked by the client. The images are computer generated and are just an approximate indication of the real appearance of the property; these may change at any time. The information with regards to the property may also change at any time.

For **more information** or
to make an appointment

apropertiespalma@aproperties.es
Tel: 871 16 01 60
www.aproperties.es