

Llucmajor Interior, Llucmajor

REF. APM2501020

Spacious apartment for rent in the village of Llucmajor with Parking

Features

- ✓ Views
- ✓ Furnished
- ✓ AACC
- ✓ Has parking
- ✓ Heating
- ✓ Boxroom
- ✓ Lift

Surface

250 m²

Bedrooms

3

Bathrooms

3



Price

2,400 €

This spacious 250 sqm apartment is located in one of the most sought-after locations in Llucmajor, in the emblematic Plaza de España, offering unobstructed views and a quiet but central setting.

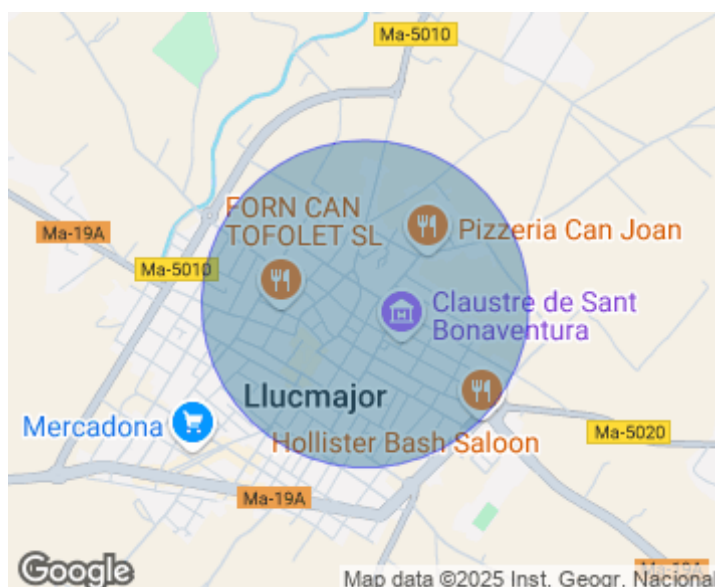
With a classic and elegant design, this property is ideal for both families and those looking for a home full of character and comfort. From the entrance door to the house through a hall, we access the day area where we find a spacious and bright living room, which is divided into two spaces, allowing the creation of two environments. Ideal to enjoy with the family or to receive guests. It has a separate dining room with access to a balcony. The independent

kitchen is fully furnished and equipped and has a laundry area providing functionality and additional space to the property. Through a corridor we access to the night area where we find 3 double bedrooms with fitted closets and three bathrooms, one of them en suite with bathtub. In the same area we find a TV room with the possibility of converting it into a fourth bedroom according to the needs of the tenants. It has two parking spaces and a storage room in the same building. The property is located in the heart of Llucmajor, in the Plaza de...

Contact us,
we will be happy to assist you,
to offer you more details and information.

Llucmajor Interior, Llucmajor

REF. APM2501020



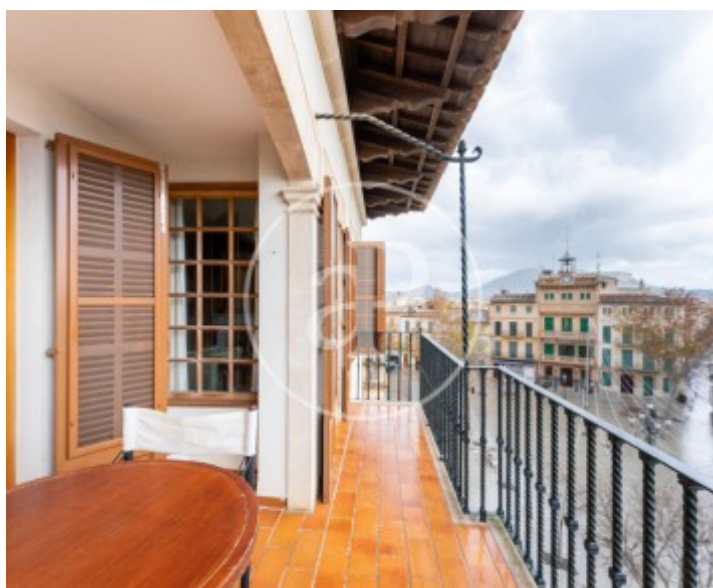
Llucmajor Interior, Llucmajor

REF. APM2501020



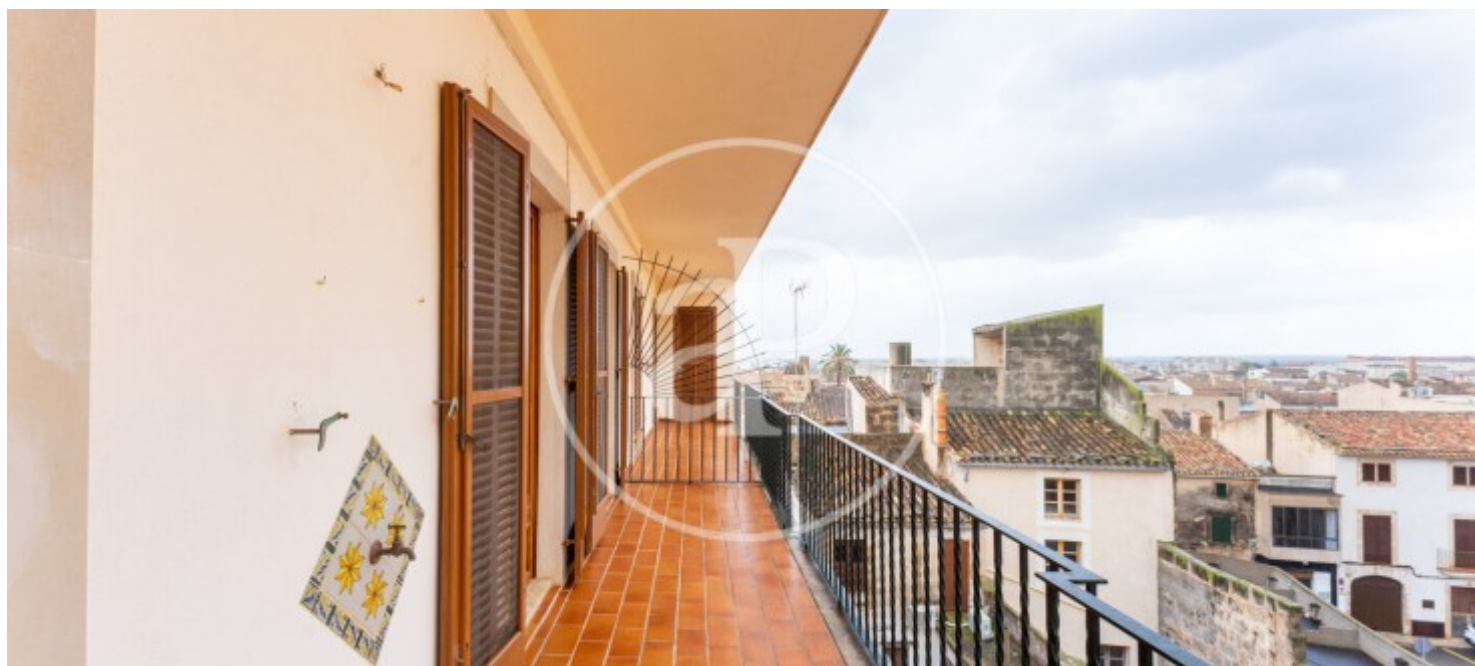
Llucmajor Interior, Llucmajor

REF. APM2501020



Llucmajor Interior, Llucmajor

REF. APM2501020



The information about any property is not binding to any offer or contract. Any verbal or written declaration made by aProperties with regards to the value or condition of the property should not be considered accurate or factual. The pictures make reference to some parts of the property at the times that they were taken. The areas, dimensions and distances that are given are approximate and should be checked by the client. The images are computer generated and are just an approximate indication of the real appearance of the property; these may change at any time. The information with regards to the property may also change at any time.

For **more information** or
to make an appointment

apropertiespalma@aproperties.es
Tel: 871 16 01 60
www.aproperties.es