



Llucmajor Interior, Llucmajor

REF. VPM2506015

Estate for Sale in Llucmajor

Features

- ✓ Views
- ✓ Furnished
- ✓ AACC
- ✓ Backyard
- ✓ Has parking
- ✓ Heating
- ✓ Boxroom
- ✓ Terrace
- ✓ Pool

Surface

1,500 m²

Bedrooms

14

Bathrooms

19



Price

Price upon request

This extraordinary country estate, fully restored with exquisite taste, is located in the municipality of Llucmajor, set on an extensive private plot of 26 hectares.

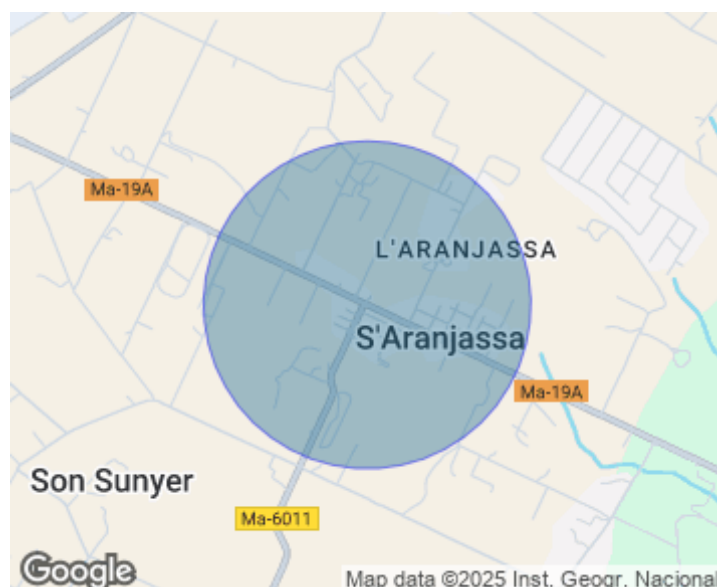
Just 25 minutes from the airport and close to the prestigious Cap Rocat Hotel — an iconic retreat that blends history, luxury, and comfort — this property is a true oasis of tranquillity and elegance in the heart of Mallorca. Overlooking the estate, an imposing 11th-century defensive tower stands as a testament to the rich history of the place. Over the centuries, the property was expanded into a majestic main residence of over 1,000 m². Its impressive stone façade has been

carefully restored, preserving the charm of traditional Mallorcan architecture while combining it with every modern comfort. The interior pays tribute to the art of living. Original features such as exposed beams and natural stone floors blend harmoniously with a sophisticated, contemporary décor. Original artworks adorn each room, giving the house a unique and exclusive character. The property offers 14 spacious double en-suite bedrooms, each designed with its own distinctive and refined style. Every room includes a dressing area and bathroom, ensuring maximum comfort and...

Contact us,
we will be happy to assist you,
to offer you more details and information.

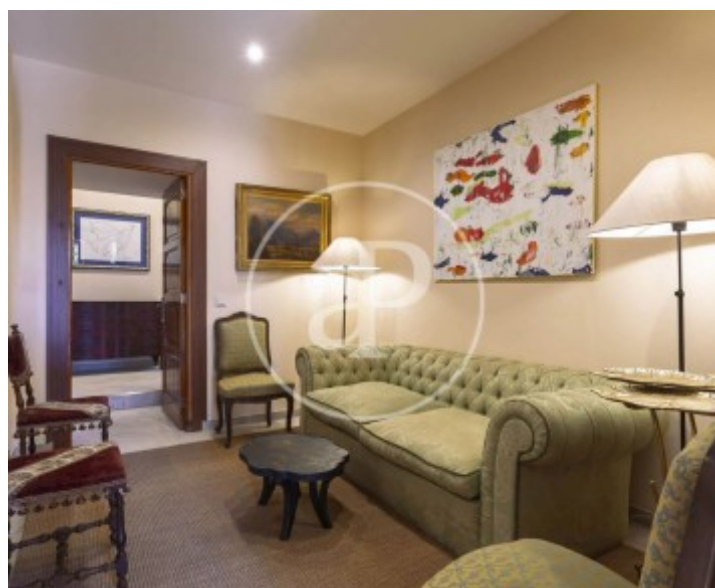
Llucmajor Interior, Llucmajor

REF. VPM2506015



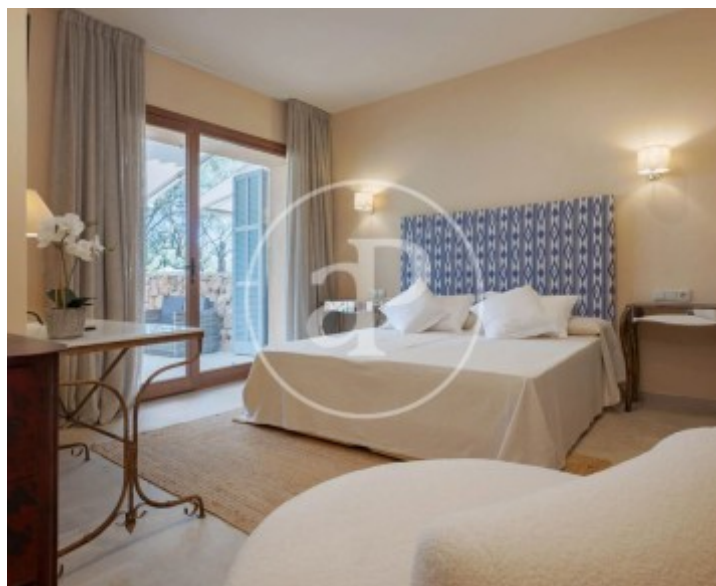
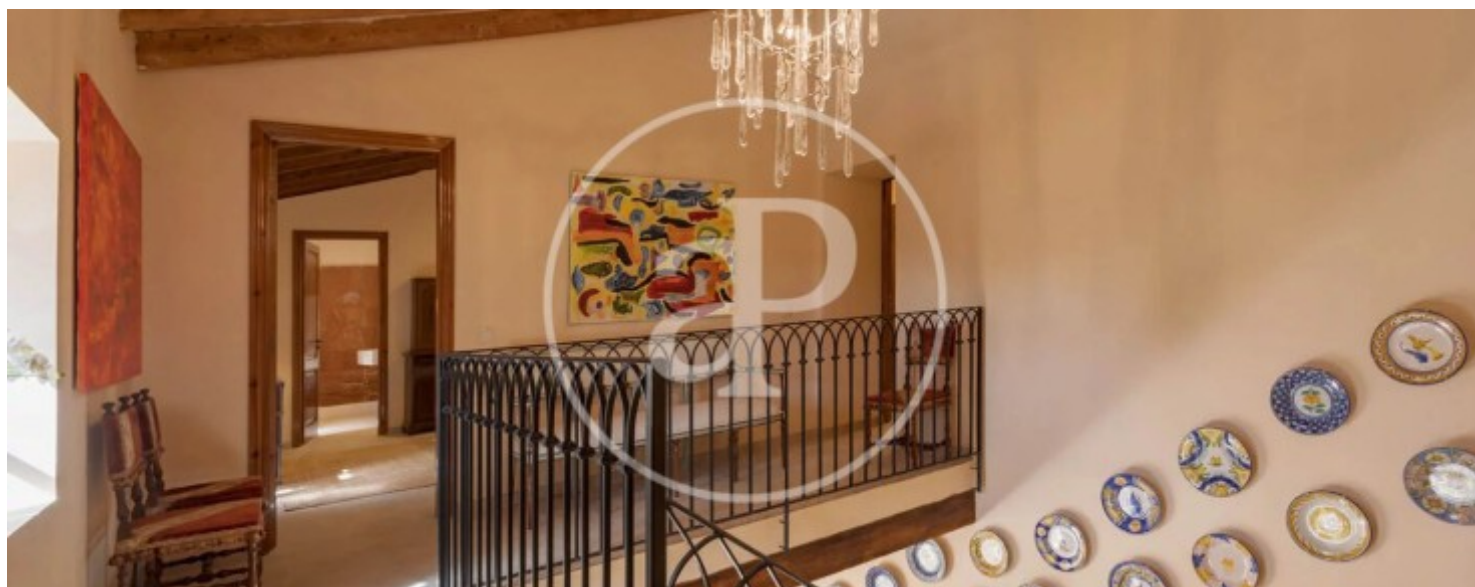
Llucmajor Interior, Llucmajor

REF. VPM2506015



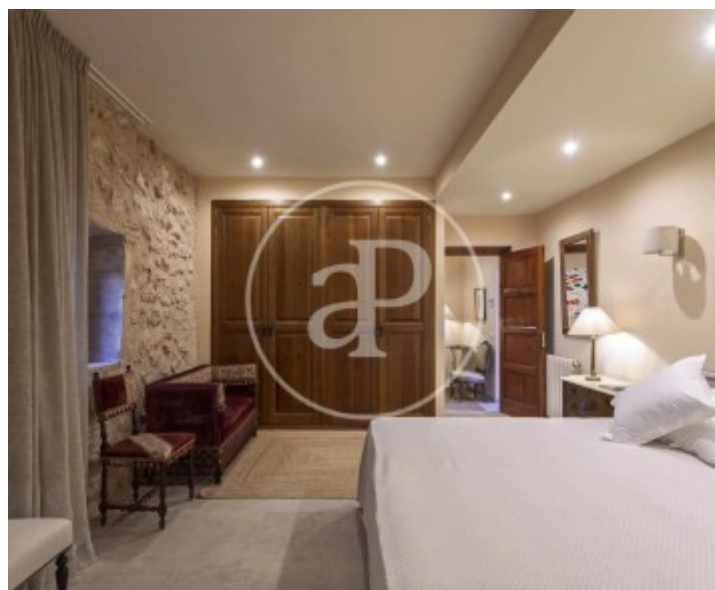
Llucmajor Interior, Llucmajor

REF. VPM2506015



Llucmajor Interior, Llucmajor

REF. VPM2506015



The information about any property is not binding to any offer or contract. Any verbal or written declaration made by aProperties with regards to the value or condition of the property should not be considered accurate or factual. The pictures make reference to some parts of the property at the times that they were taken. The areas, dimensions and distances that are given are approximate and should be checked by the client. The images are computer generated and are just an approximate indication of the real appearance of the property; these may change at any time. The information with regards to the property may also change at any time.

For **more information** or
to make an appointment

apropertiespalma@aproperties.es
Tel: 871 16 01 60
www.aproperties.es