

Cala Blava - Bellavista, Llucmajor

REF. APMS2412002

Apartment for rent in Bellavista

Features

- ✓ Views
- ✓ Furnished
- ✓ Terrace
- ✓ Has parking
- ✓ Heating
- ✓ AACC
- ✓ Pool

Surface

100 m²

Bedrooms

2

Bathroom

1

Price

1,700 €



Enjoy this modern fully furnished penthouse with stunning sea, mountain and Palma city views, perfect for those looking for comfort and style in a unique setting.

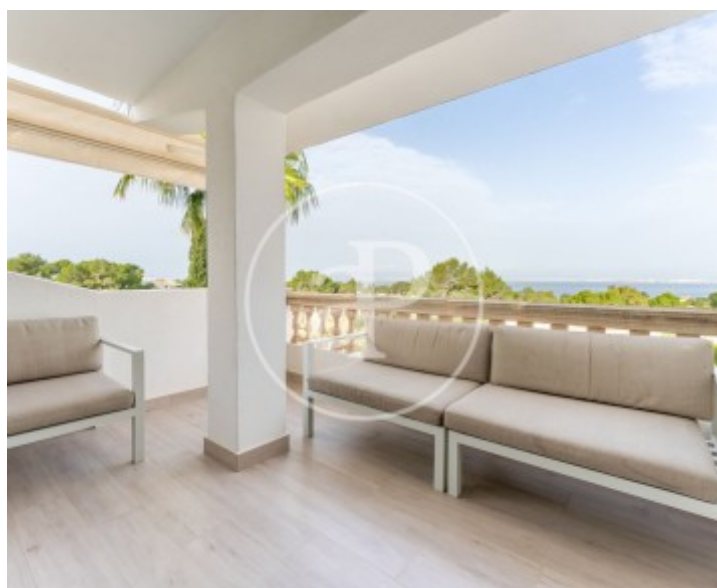
The day area is designed to maximise brightness and functionality. It features a spacious and modern living-dining room that is integrated with a fully equipped kitchen with high quality appliances. From here there is access to a private terrace, the ideal place to relax and enjoy the panoramic views. The property has two comfortable and well-designed bedrooms, perfect for relaxing. Both have details that reflect the modern style of the flat, and share a full bathroom equipped with contemporary

finishes. In addition, the building has a communal swimming pool, perfect for enjoying on summer days. It also includes a parking space for your convenience. The entire flat is air-conditioned, ensuring a pleasant atmosphere all year round. Located in Palma, this penthouse is in a quiet area but close to all the necessary services, with easy access to the centre and just a few minutes from the beach. Can you imagine living here, we are waiting for your call!

Contact us,
we will be happy to assist you,
to offer you more details and information.

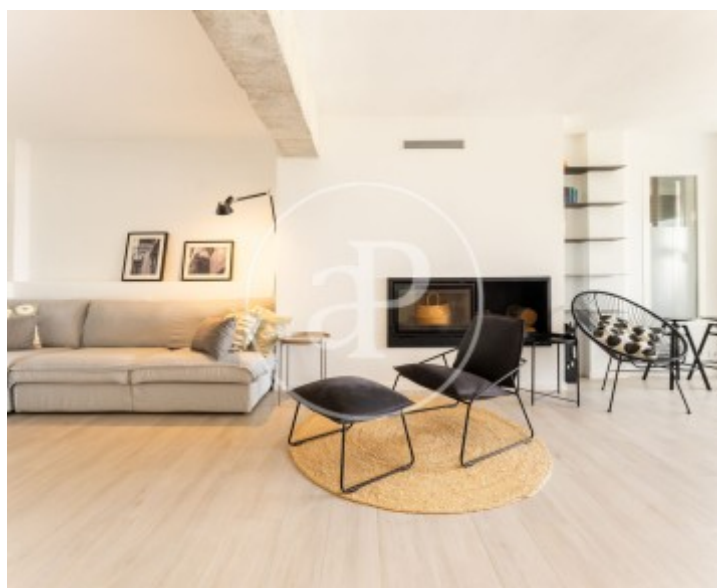
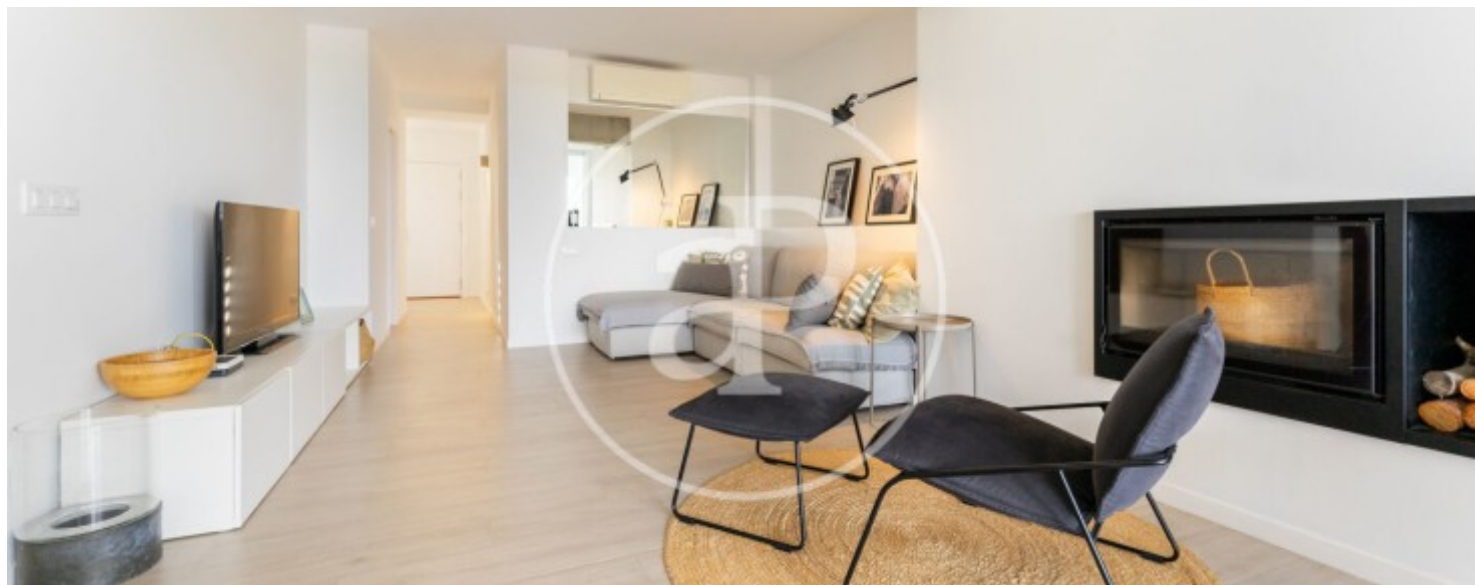
Cala Blava - Bellavista, Llucmajor

REF. APMS2412002



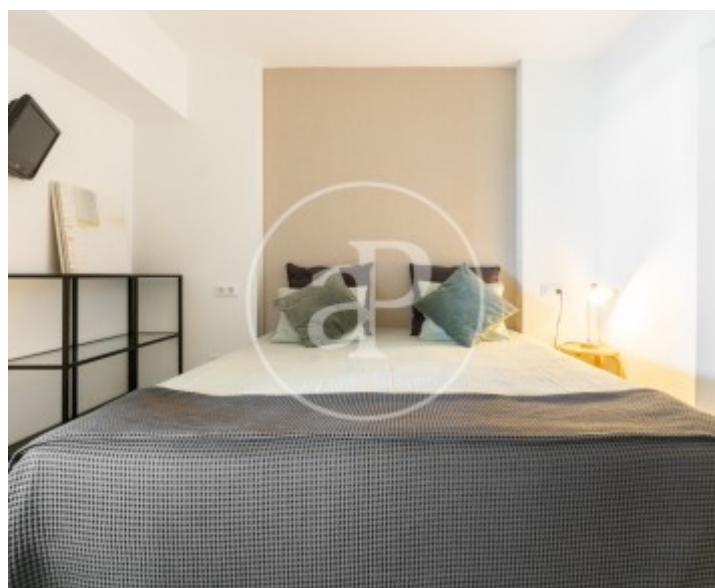
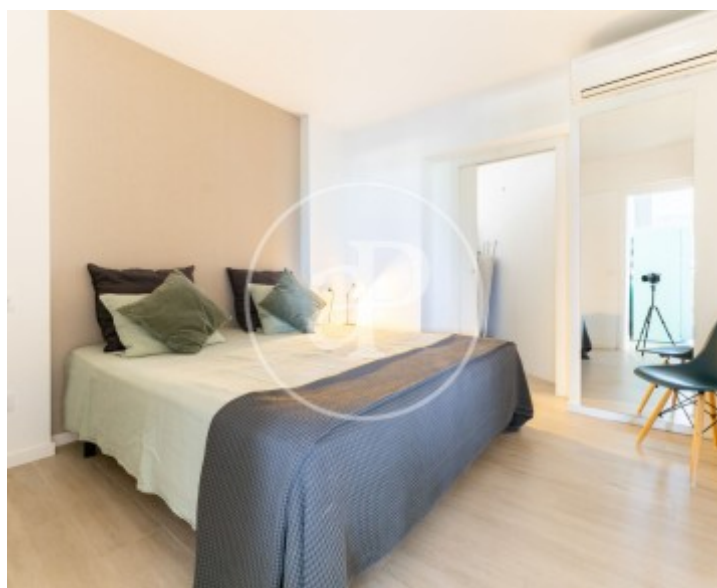
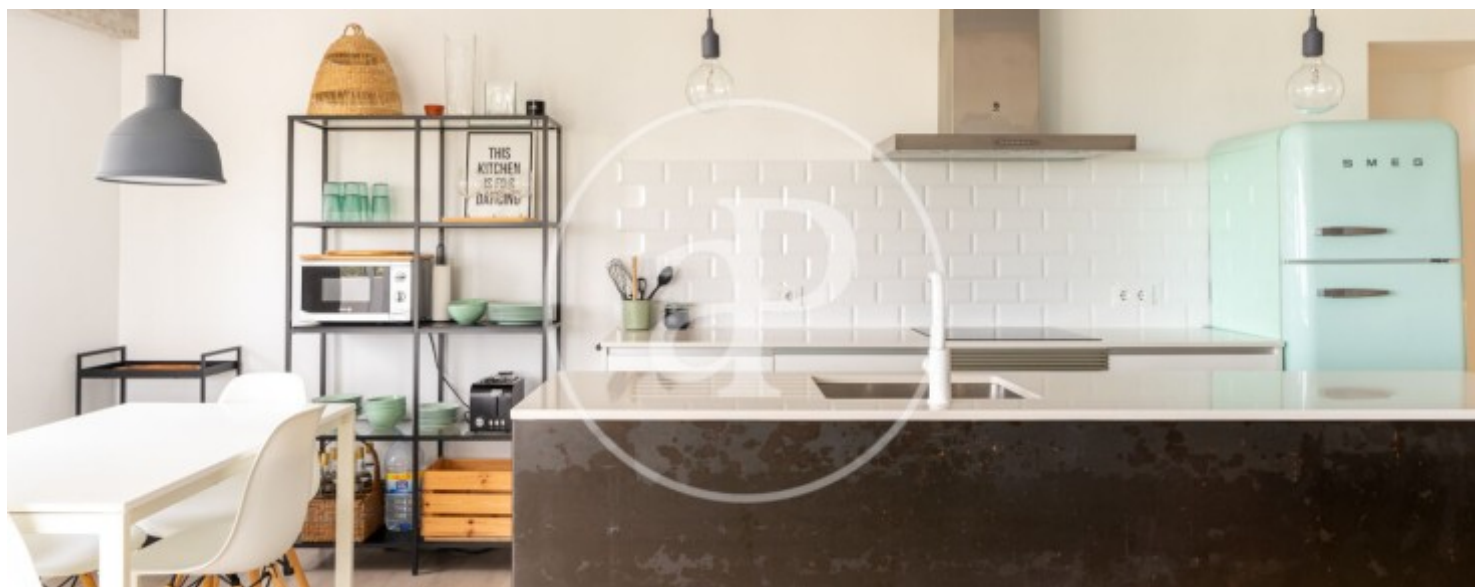
Cala Blava - Bellavista, Llucmajor

REF. APMS2412002



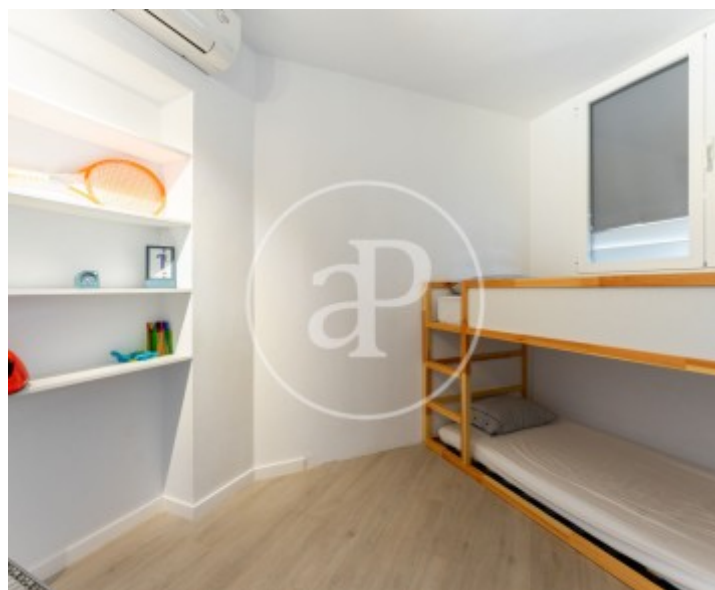
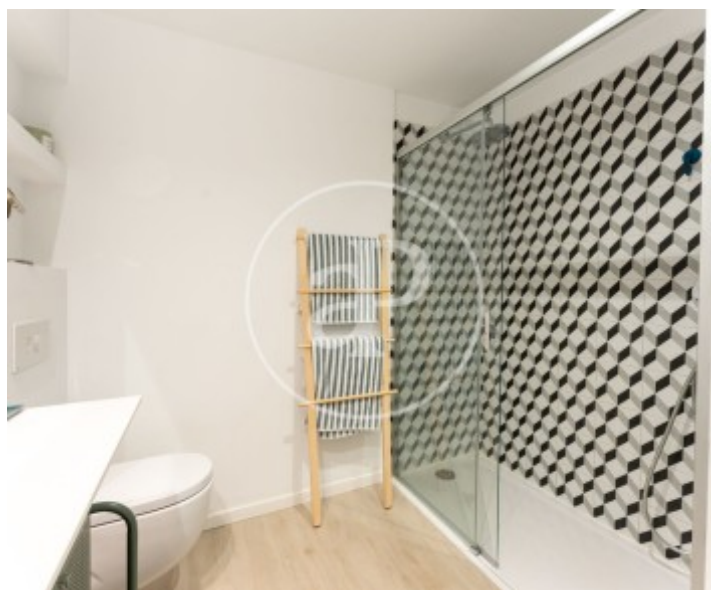
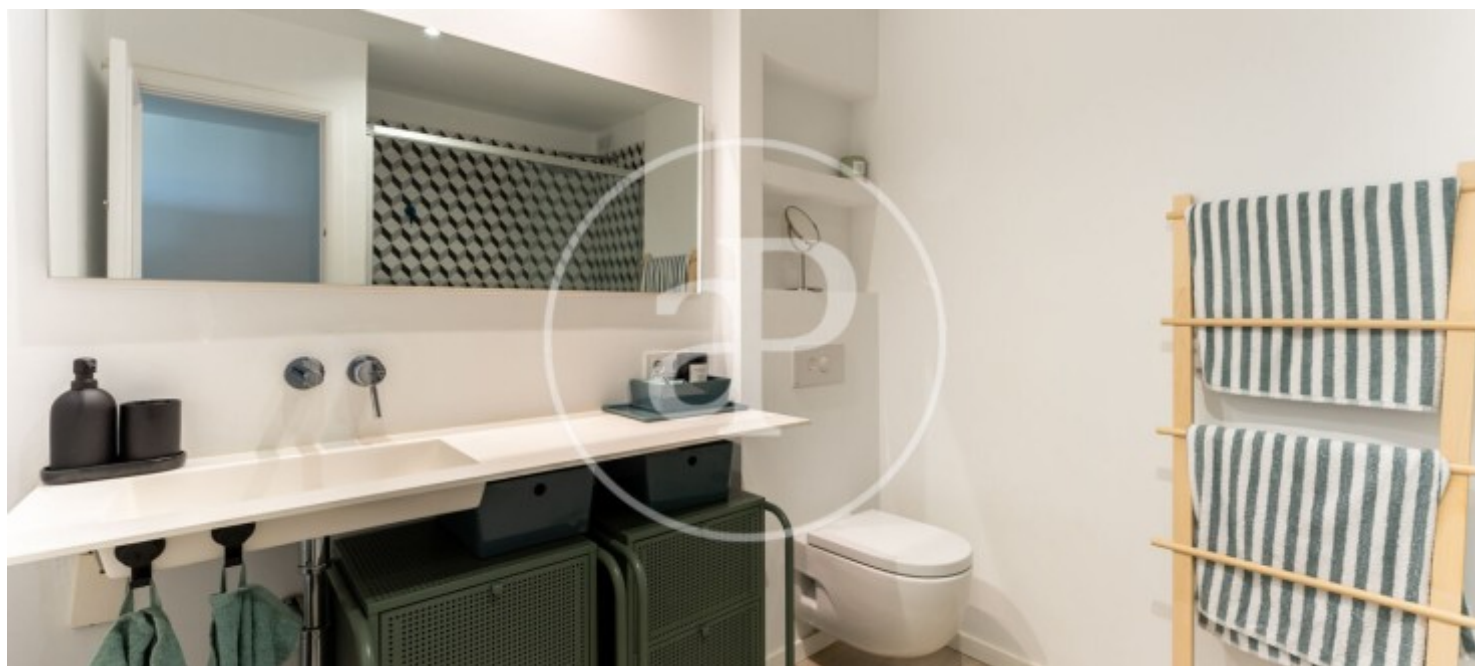
Cala Blava - Bellavista, Llucmajor

REF. APMS2412002



Cala Blava - Bellavista, Llucmajor

REF. APMS2412002



The information about any property is not binding to any offer or contract. Any verbal or written declaration made by aProperties with regards to the value or condition of the property should not be considered accurate or factual. The pictures make reference to some parts of the property at the times that they were taken. The areas, dimensions and distances that are given are approximate and should be checked by the client. The images are computer generated and are just an approximate indication of the real appearance of the property; these may change at any time. The information with regards to the property may also change at any time.

For **more information** or
to make an appointment

apropertiespalma@aproperties.es
Tel: 871 16 01 60
www.aproperties.es