

Badia Blava - Badia Gran - Tollerico, Lluçmajor

REF. VPM2311046



Semi-detached house for sale in Bahía Grande

Features

- ✓ Heating
- ✓ Furnished
- ✓ Boxroom
- ✓ Backyard
- ✓ Has parking

Price

520,000 €

Surface

155 m²

Bedrooms

4

Bathrooms

3



This is a bright semi-detached house in Bahia Grande.

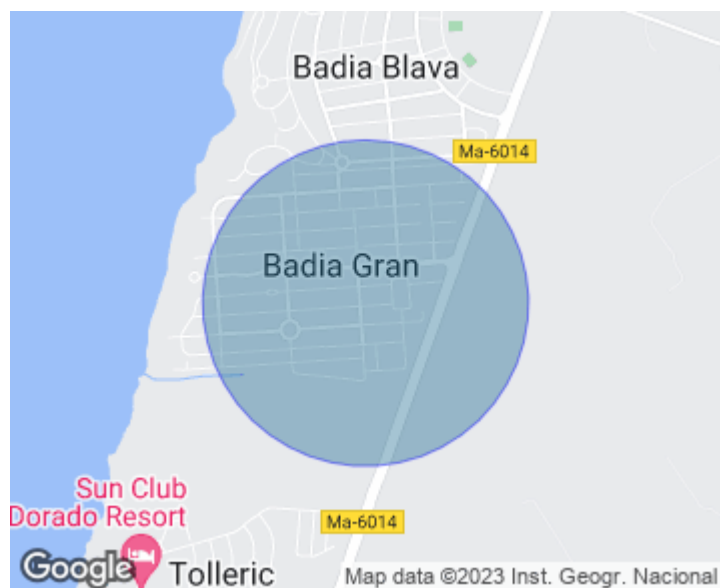
The house consists of two floors. On the main floor we find a large living room, a double bedroom, a bathroom and a large independent kitchen. All the rooms have access to the surrounding gardens. On the first floor, there are three bedrooms, one of them with an en-suite bathroom with a nice balcony, a second bathroom and a fourth bedroom that can be used as a laundry room or dressing room. This house has a nice distribution. With a large porch and spacious garden. Its characteristics are: garden, parking, heating, balcony and large porch. Situated in a very quiet area close to the sea in Bahia Grande.

Close to all the services offered in the area such as supermarkets, schools and restaurants. Only 15 minutes from the airport and 25 minutes from the city of Palma. Very close to the golf course of Maioris. It is perfect for those who are looking for tranquillity surrounded by the sea. Can you imagine living here, we are waiting for your call!

Contact us,
we will be happy to assist you,
to offer you more details and information.

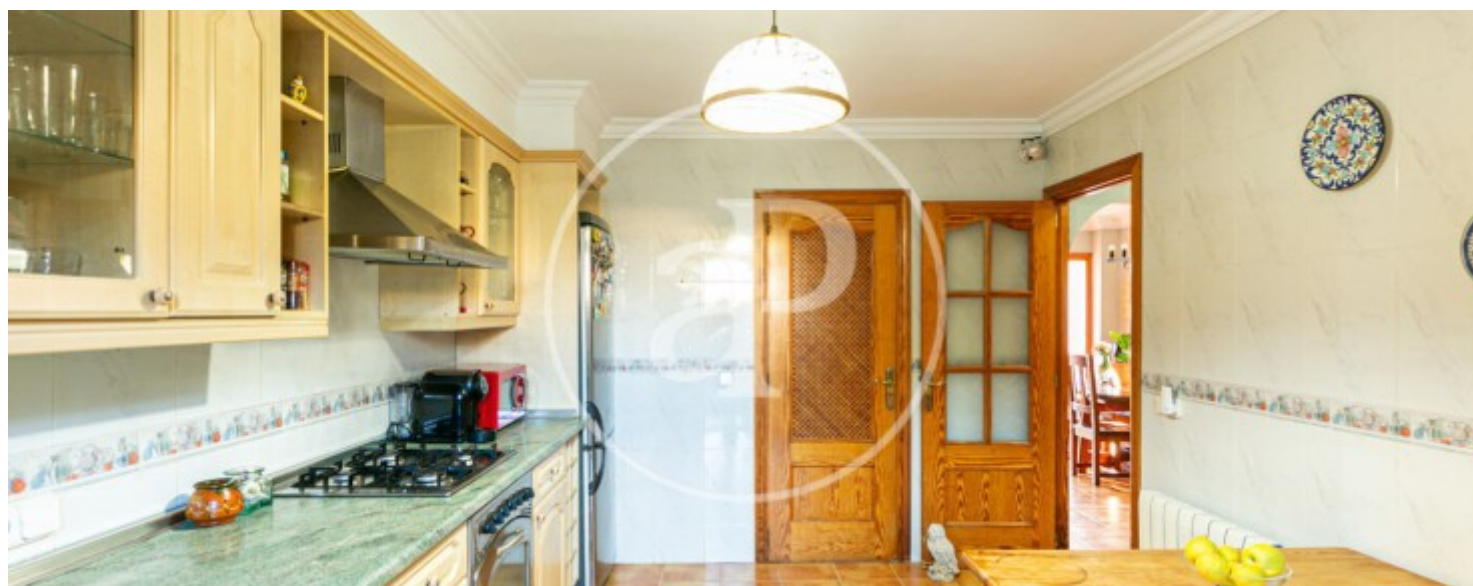
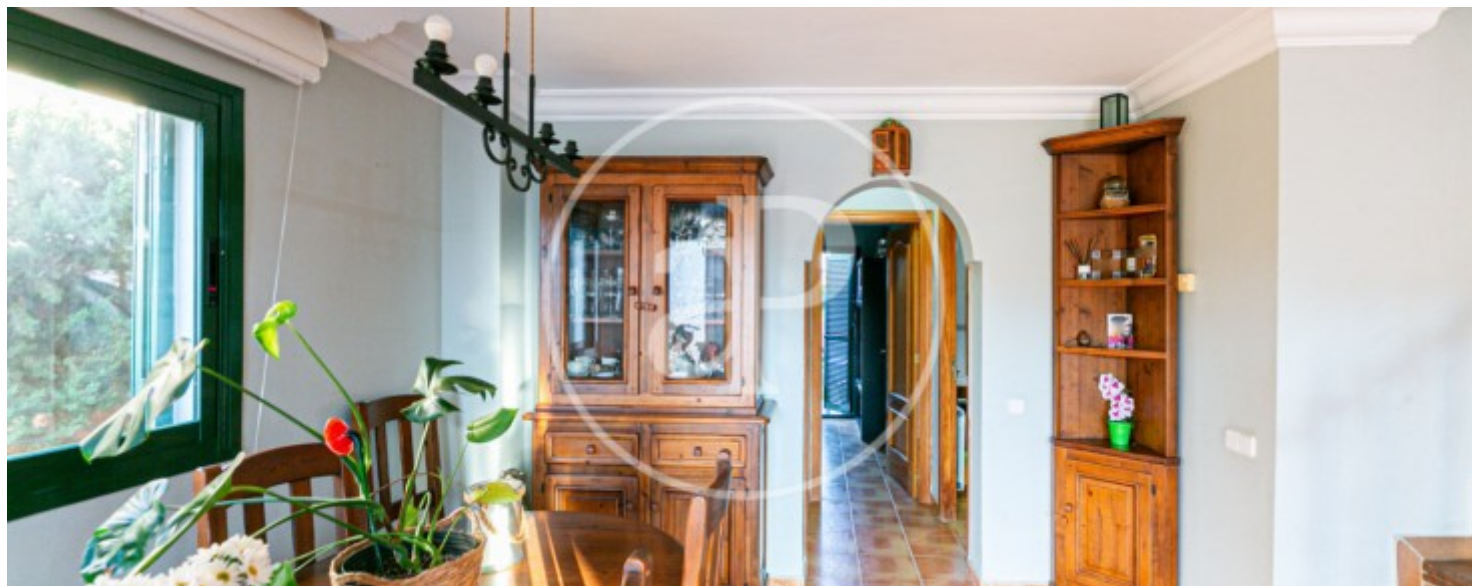
Badia Blava - Badia Gran - Tollerich, Lluçmajor

REF. VPM2311046



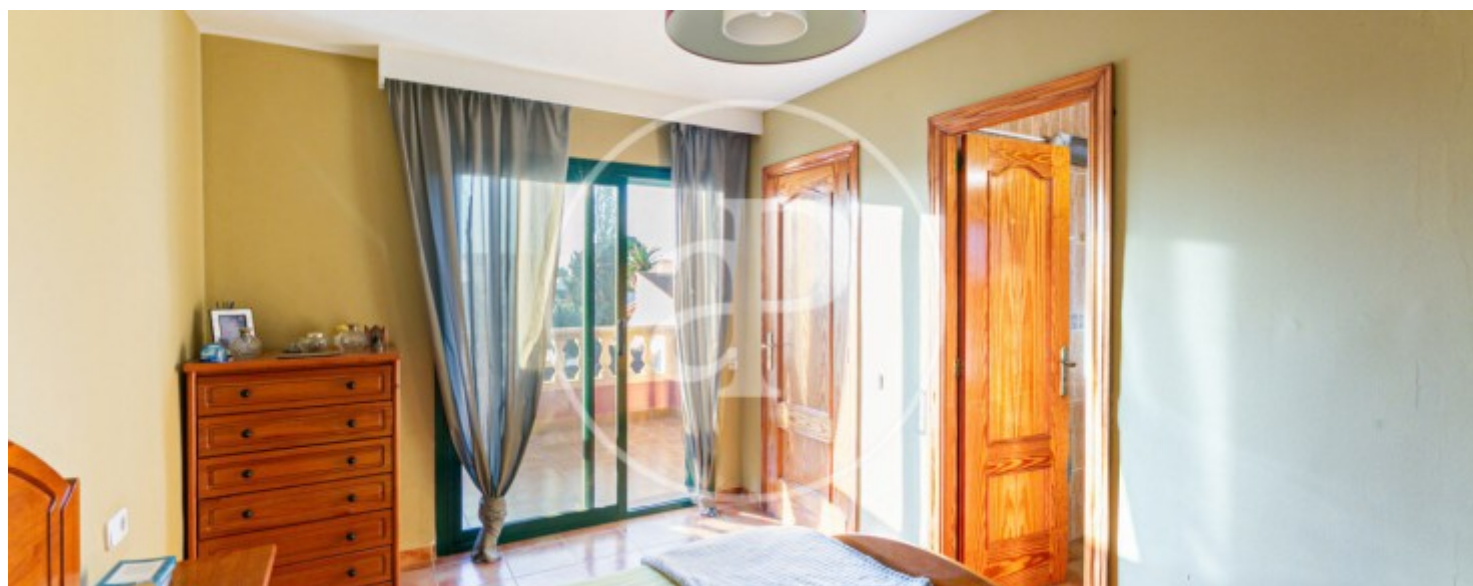
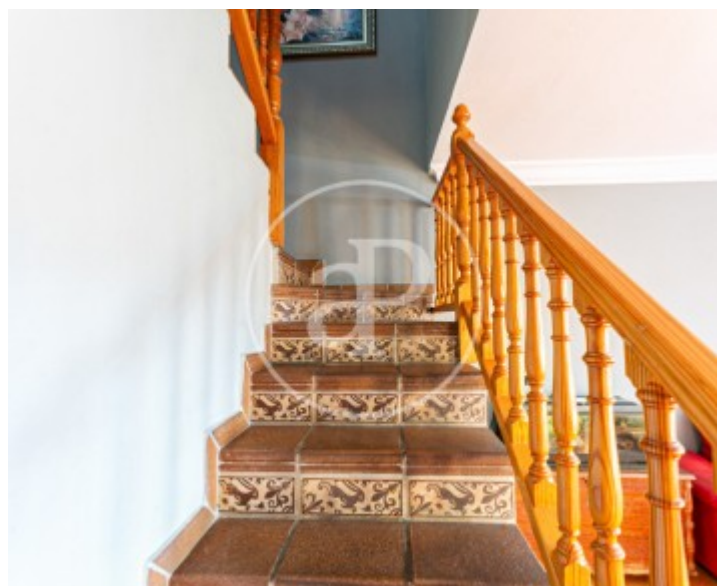
Badia Blava - Badia Gran - Tolleríc, Lluçmajor

REF. VPM2311046



Badia Blava - Badia Gran - Tolleríc, Lluçmajor

REF. VPM2311046





APROPERTIES
REAL ESTATE

Calle Unió 9
07001 Palma
T. 871 16 01 60
www.aproperties.es

Badia Blava - Badia Gran - Tolleris, Lluçmajor

REF. VPM2311046



The information about any property is not binding to any offer or contract. Any verbal or written declaration made by aProperties with regards to the value or condition of the property should not be considered accurate or factual. The pictures make reference to some parts of the property at the times that they were taken. The areas, dimensions and distances that are given are approximate and should be checked by the client. The images are computer generated and are just an approximate indication of the real appearance of the property; these may change at any time. The information with regards to the property may also change at any time.



For **more information** or
to make an appointment

apropertiespalma@aproperties.es
Tel: 871 16 01 60
www.aproperties.es