

Badia Blava - Badia Gran - Tolleris, Lluçmajor

REF. VPM2402035



House for sale in Badia Grande

Features

- ✓ Views
- ✓ Heating
- ✓ Boxroom
- ✓ AACC
- ✓ Terrace
- ✓ Backyard
- ✓ Pool
- ✓ Gym
- ✓ Has parking

Price

1,740,000 €

Surface

304 m²

Plot surface

603 m²

Bedrooms

4

Bathrooms

2



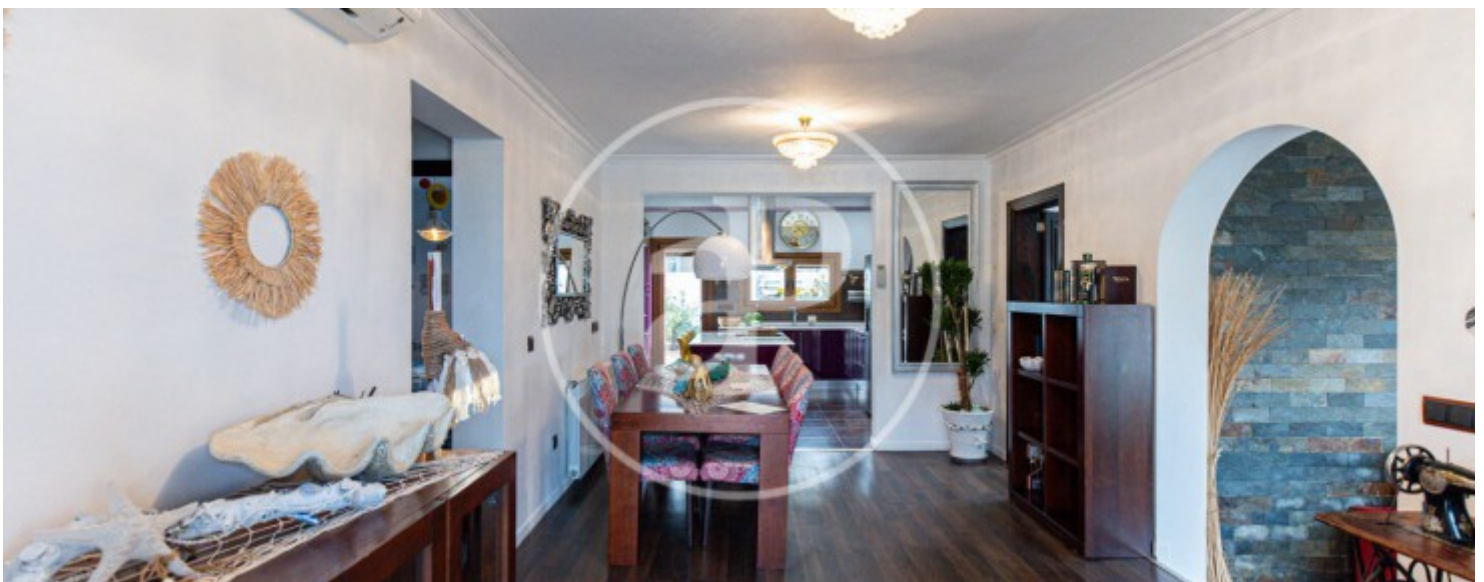
Discover your ideal home in the exclusive residential area of Badia Gran Lluçmajor, where this magnificent detached house offers you a dream life with its location on the second line of the sea, offering breathtaking views of the Bay of Palma, between Cala Pi and Arenal. Only 25 minutes from the hustle and bustle of the city centre and 15 minutes from the airport, this property stands out for its marvellous sunsets and its exceptional design. The property has a perfect distribution, surrounded by terraces, garden and a beautiful salt water swimming pool facing the sea. It also has a guest room or multipurpose space that adds versatility to your new home. The main floor welcomes you with a bright living and dining room on two levels, with exposed beams and large windows, accompanied by two fireplaces

that create a cosy atmosphere. The spacious and elegant kitchen, equipped with top of the range appliances and a central island, is perfect for foodies. The main floor houses three bedrooms, one of them with an elegant en suite bathroom and dressing room, while on the opposite side there are two additional bedrooms and a bathroom with shower. The first floor will surprise you with an additional room and access from the outside, giving you a unique space to enjoy. The property is distinguished by its marine decoration that envelops the entire property, creating a unique and relaxing...

Contact us,
we will be happy to assist you,
to offer you more details and information.

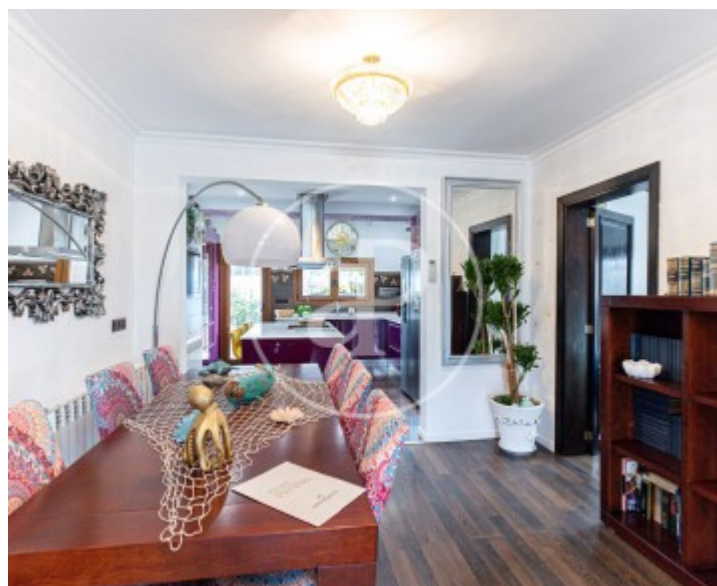
Badia Blava - Badia Gran - Tollerich, Lluçmajor

REF. VPM2402035



Badia Blava - Badia Gran - Tolleria, Lluçmajor

REF. VPM2402035





APROPERTIES
REAL ESTATE

Calle Unió 9
07001 Palma
T. 871 16 01 60
www.aproproperties.es

Badia Blava - Badia Gran - Tollerich, Lluçmajor

REF. VPM2402035





APROPERTIES
REAL ESTATE

Calle Unió 9
07001 Palma
T. 871 16 01 60
www.aproperties.es

Badia Blava - Badia Gran - Tolleris, Lluçmajor

REF. VPM2402035



The information about any property is not binding to any offer or contract. Any verbal or written declaration made by aProperties with regards to the value or condition of the property should not be considered accurate or factual. The pictures make reference to some parts of the property at the times that they were taken. The areas, dimensions and distances that are given are approximate and should be checked by the client. The images are computer generated and are just an approximate indication of the real appearance of the property; these may change at any time. The information with regards to the property may also change at any time.



For **more information** or
to make an appointment

apropertiespalma@aproperties.es
Tel: 871 16 01 60
www.aproperties.es