

Badia Blava - Badia Gran - Tolleria, Lluçmajor

REF. VPM2208049



House for rent with Terrace in Bahía Grande (Lluçmajor)

Features

Surface

250 m²

Bedrooms

4

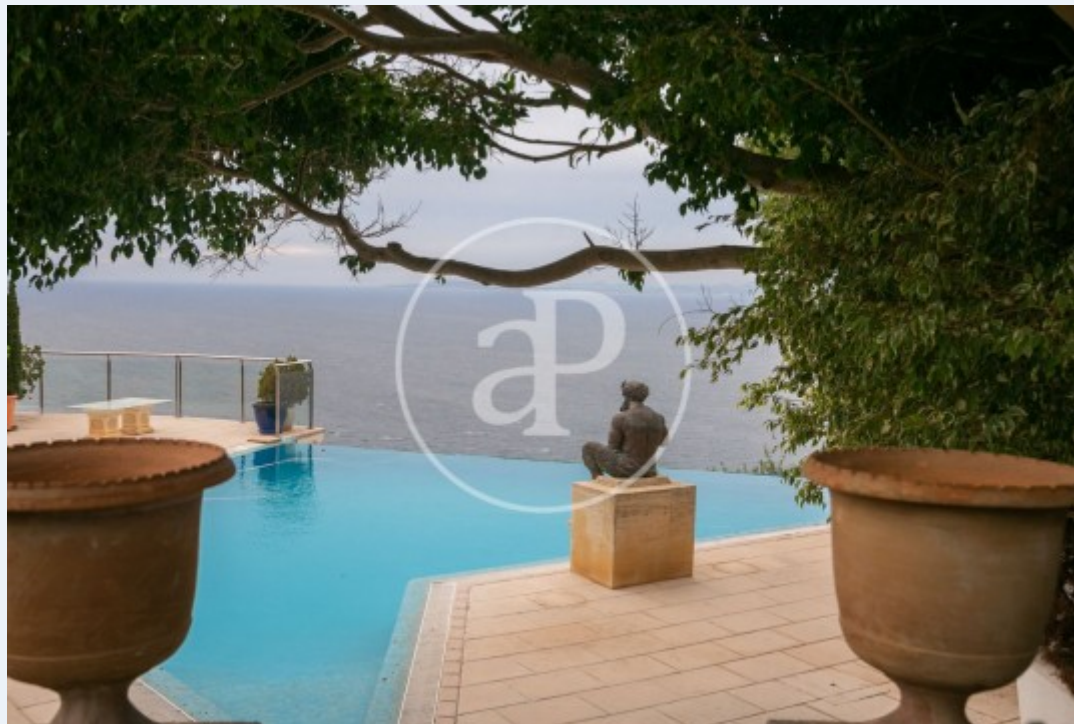
Bathrooms

2

- ✓ Views
- ✓ Boxroom
- ✓ Terrace
- ✓ Pool
- ✓ Furnished
- ✓ AACC
- ✓ Backyard
- ✓ Has parking

Price

3,360,000 €



LUXURY VILLA FOR TEMPORARY RENTAL WITH FABULOUS VIEWS OVER THE BAY OF PALMA LOCATED ON THE CLIFF IN BAHIA GRANDE Villa of 250 sqm with breathtaking views, four bedrooms and swimming pool in Sa Torre, on a plot of 1000 sqm on the cliff. Through the main door, from the garden, we enter this luxurious property. We find a hall, which has on the right a living room of 36 sqm, with a central fireplace. To the left we have the dining room and the kitchen, with an English patio. At the back we have two bedrooms, a bathroom and a storage room. Each bedroom has its own terrace. Through the corridor, at the back we access the large terrace and the swimming pool, with infinity effect. Upstairs we have two bedrooms, with access to a common terrace for both and a study, with access to another terrace. This is

a property with spectacular views and lush gardens. From this villa you can enjoy wonderful sunsets. Check availability and price Can you imagine living here?

Contact us,
we will be happy to assist you,
to offer you more details and information.

Badia Blava - Badia Gran - Tollerich, Lluçmajor

REF. VPM2208049



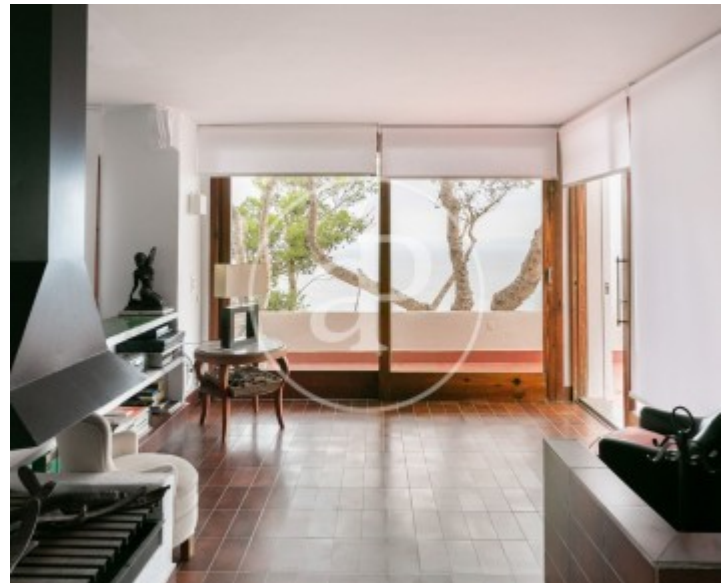


APROPERTIES
REAL ESTATE

Calle Unió 9
07001 Palma
T. 871 16 01 60
www.aproproperties.es

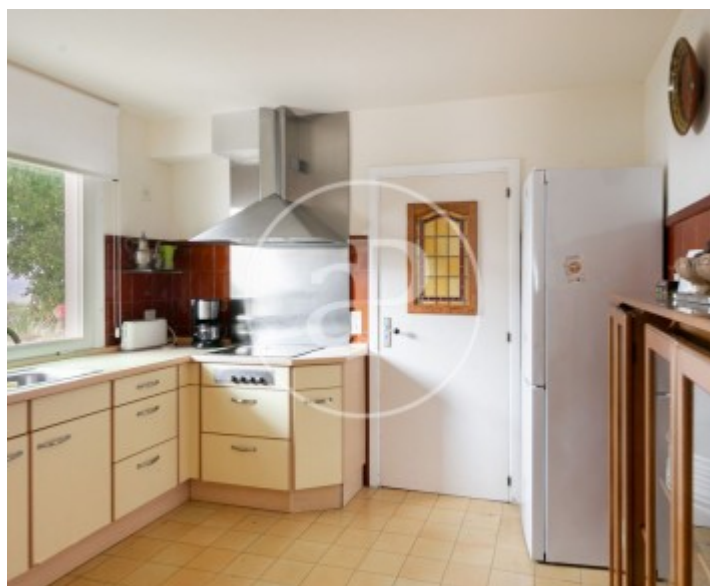
Badia Blava - Badia Gran - Tolleris, Lluçmajor

REF. VPM2208049



Badia Blava - Badia Gran - Tollerich, Lluçmajor

REF. VPM2208049





APROPERTIES
REAL ESTATE

Calle Unió 9
07001 Palma
T. 871 16 01 60
www.aproperties.es

Badia Blava - Badia Gran - Tolleris, Lluçmajor

REF. VPM2208049



The information about any property is not binding to any offer or contract. Any verbal or written declaration made by aProperties with regards to the value or condition of the property should not be considered accurate or factual. The pictures make reference to some parts of the property at the times that they were taken. The areas, dimensions and distances that are given are approximate and should be checked by the client. The images are computer generated and are just an approximate indication of the real appearance of the property; these may change at any time. The information with regards to the property may also change at any time.



For **more information** or
to make an appointment

apropertiespalma@aproperties.es
Tel: 871 16 01 60
www.aproperties.es