

Badia Blava - Badia Gran - Tolleric, Lluçmajor

REF. VPM2511026

House for Sale in the Lluçmajor Urbanisations Area

Features

- ✓ Heating
- ✓ AACC
- ✓ Backyard
- ✓ Boxroom
- ✓ Terrace
- ✓ Has parking

Price

735,000 €

Surface

185 m²

Bedrooms

4

Bathrooms

3



We present this charming terraced house in the peaceful and well-connected residential area of Lluçmajor, Bahía Azul, a family-friendly environment just a step away from the sea.

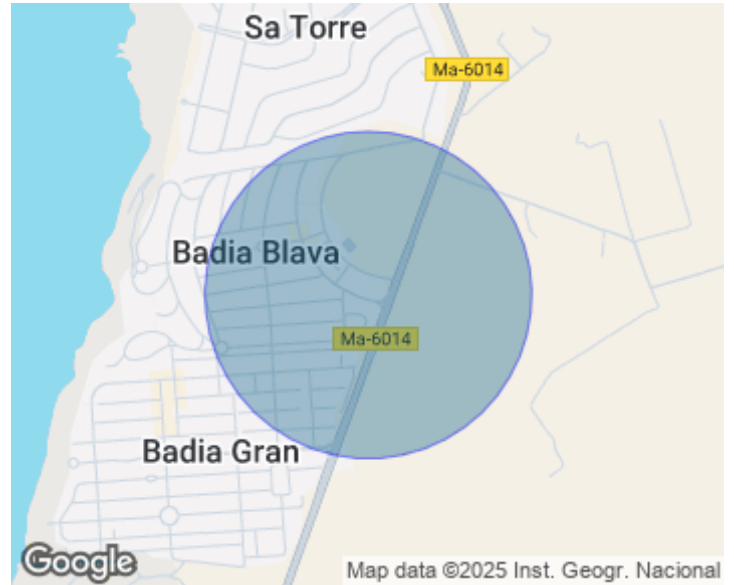
With its south-facing orientation, the property enjoys sunlight throughout the entire day, creating warm, bright, and very pleasant spaces. With a surface area of 185 m², the house is distributed over two floors:
Ground floor Spacious living-dining room with a fireplace, perfect for gatherings and family moments. Kitchen renovated in 2024, modern and fully equipped. 1 double bedroom with built-in wardrobes. 1 guest toilet. Direct access from both the living room and the

kitchen to the outdoor terraces, which extend outdoor living. First floor 2 double bedrooms with built-in wardrobes that share a full bathroom. Master suite with private bathroom and access to an independent terrace, an intimate and sunny space for relaxing. Outdoor area Covered porch with exposed wooden beams, adding character and warmth. Barbecue area, ideal for gatherings with family and friends. Covered space for two vehicles. The owners have applied for permission to build an 18 m² swimming pool, offering added value that is perfect for enjoying the Mediterranean...

Contact us,
we will be happy to assist you,
to offer you more details and information.

Badia Blava - Badia Gran - Tollerlic, Lluçmajor

REF. VPM2511026



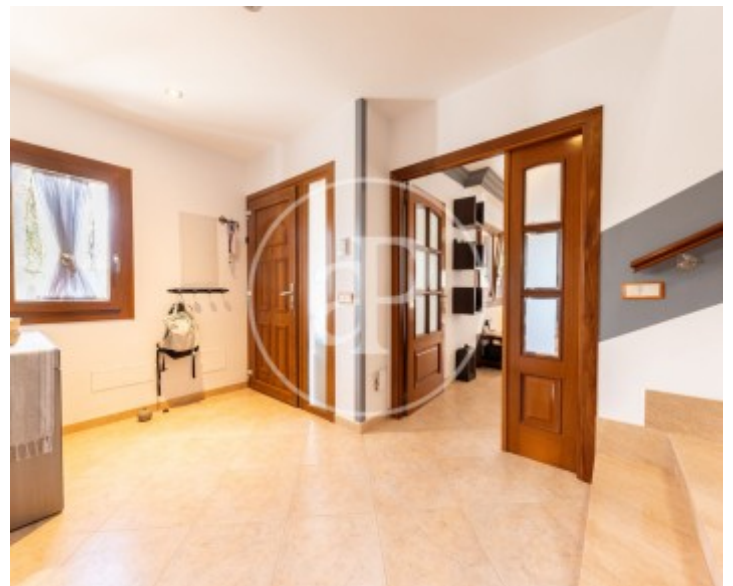
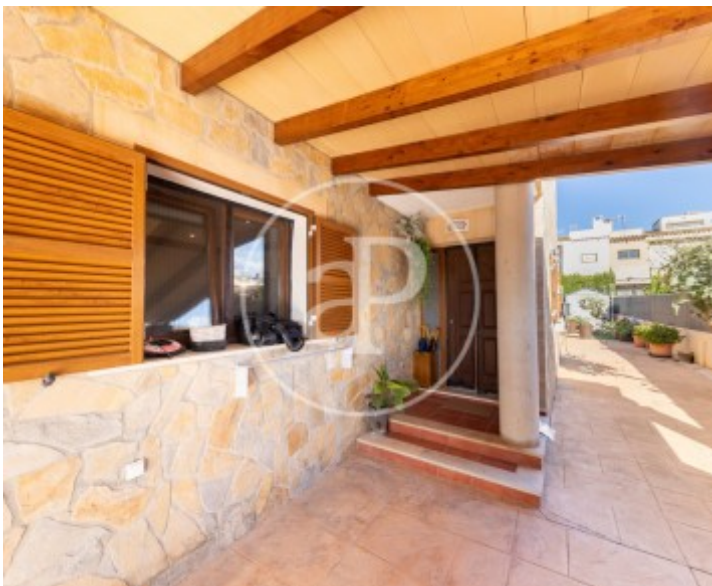
Badia Blava - Badia Gran - Tollerlic, Lluçmajor

REF. VPM2511026



Badia Blava - Badia Gran - Tollerlic, Lluçmajor

REF. VPM2511026



Badia Blava - Badia Gran - Tollerlic, Lluçmajor

REF. VPM2511026



The information about any property is not binding to any offer or contract. Any verbal or written declaration made by aProperties with regards to the value or condition of the property should not be considered accurate or factual. The pictures make reference to some parts of the property at the times that they were taken. The areas, dimensions and distances that are given are approximate and should be checked by the client. The images are computer generated and are just an approximate indication of the real appearance of the property; these may change at any time. The information with regards to the property may also change at any time.

For **more information** or
to make an appointment

apropertiespalma@aproperties.es
Tel: 871 16 01 60
www.aproperties.es