



Lloseta

REF. VPM2502021

# Detached house for sale with pool and garden in LLoseta

## Features

- ✓ Views
- ✓ AACC
- ✓ Pool
- ✓ Heating
- ✓ Backyard
- ✓ Has parking

Surface

**310 m<sup>2</sup>**

Bedrooms

**4**

Bathrooms

**3**

Price

**780,000 €**



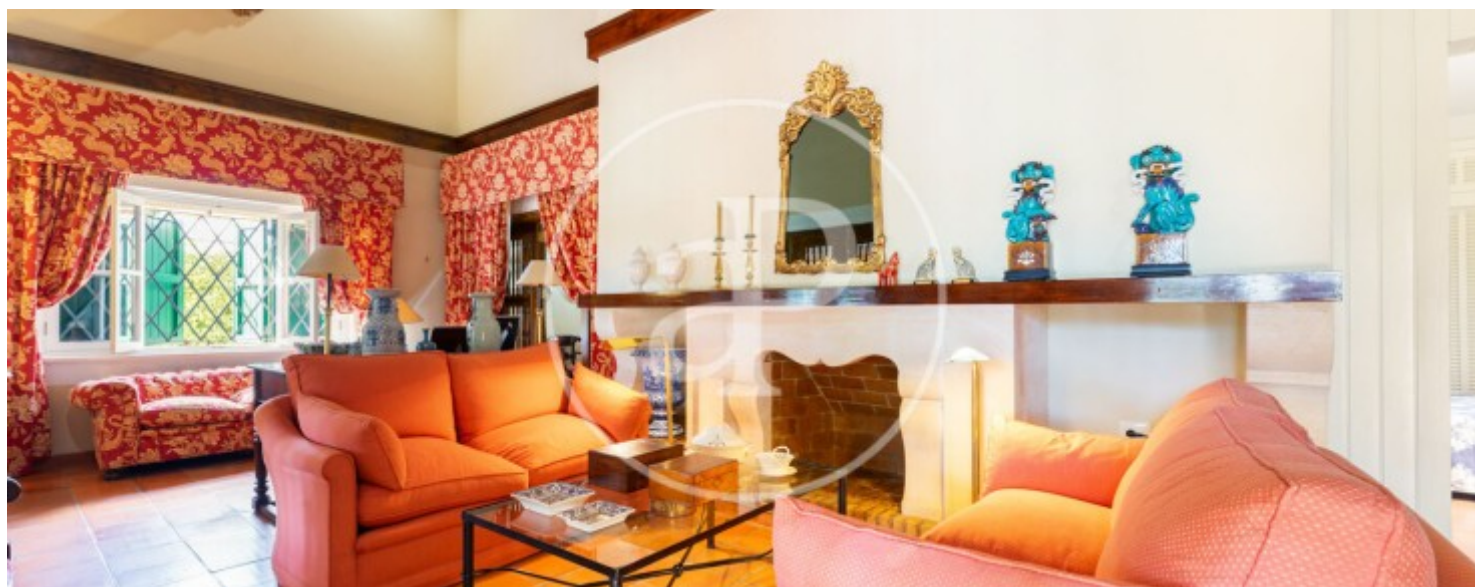
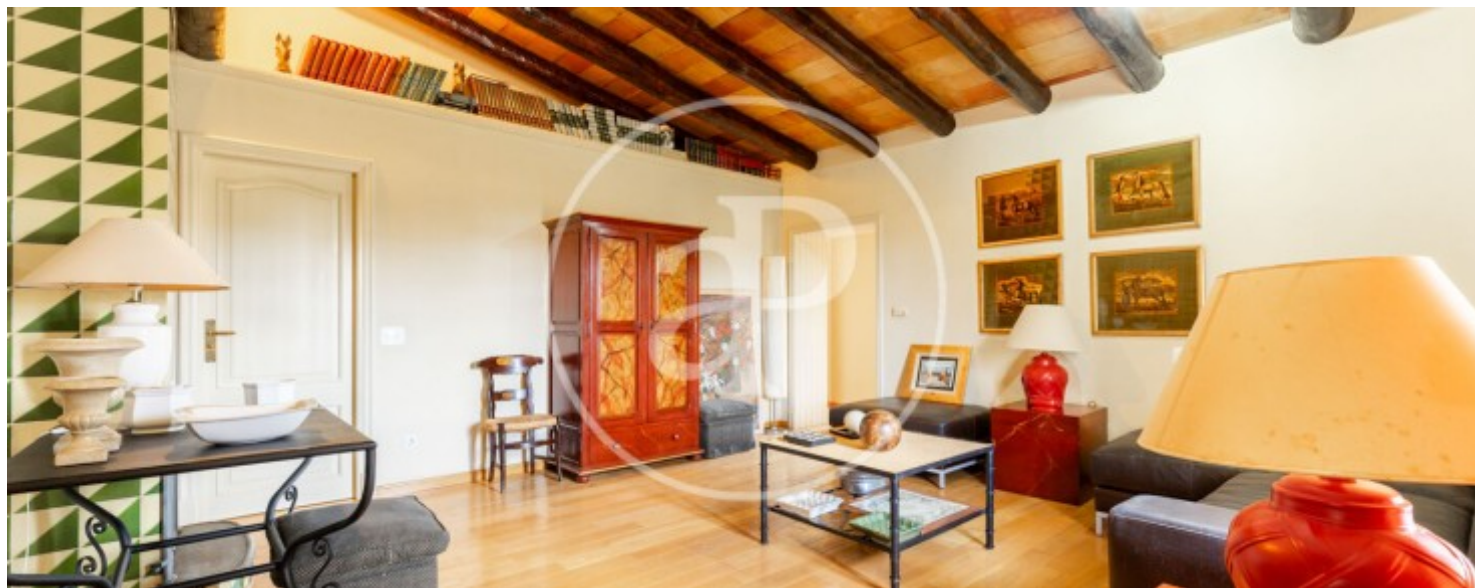
Located in the charming village of Lloseta, bordering Alaró, Selva and Binisalem, and only 30 minutes from Palma, this detached house is perfectly connected by the train that connects Palma with this quiet town. Surrounded by nature and on the outskirts of the village, the property offers a spectacular view of the Tramontana mountains and has a classic style swimming pool that enhances its natural beauty. Crossing the entrance gate, you enter a cozy front garden. On the first floor, we find a hall that leads to a large main living room with fireplace, another living room perfect for relaxing moments, an en suite bedroom, a multipurpose room currently used as an ironing room, and a breakfast kitchen with access to a spacious porch, where the pool and garden are located. The ceilings with exposed

beams and terracotta floors add a warm and traditional touch. An elegant staircase connects to the upper floor, where there are three exterior double bedrooms, two bathrooms (one of them en suite, with stunning views of the mountains) and fitted closets, offering ample space and comfort. The house is equipped with heating and air conditioning, ensuring optimum comfort throughout the year. At the rear, the property has an extensive garden adorned with fruit trees and its own water well, which makes it an ideal retreat. At the back, there is a small building of approximately 50 sqm, which...

**Contact us,**  
we will be happy to assist you,  
to offer you more details and information.

Lloseta

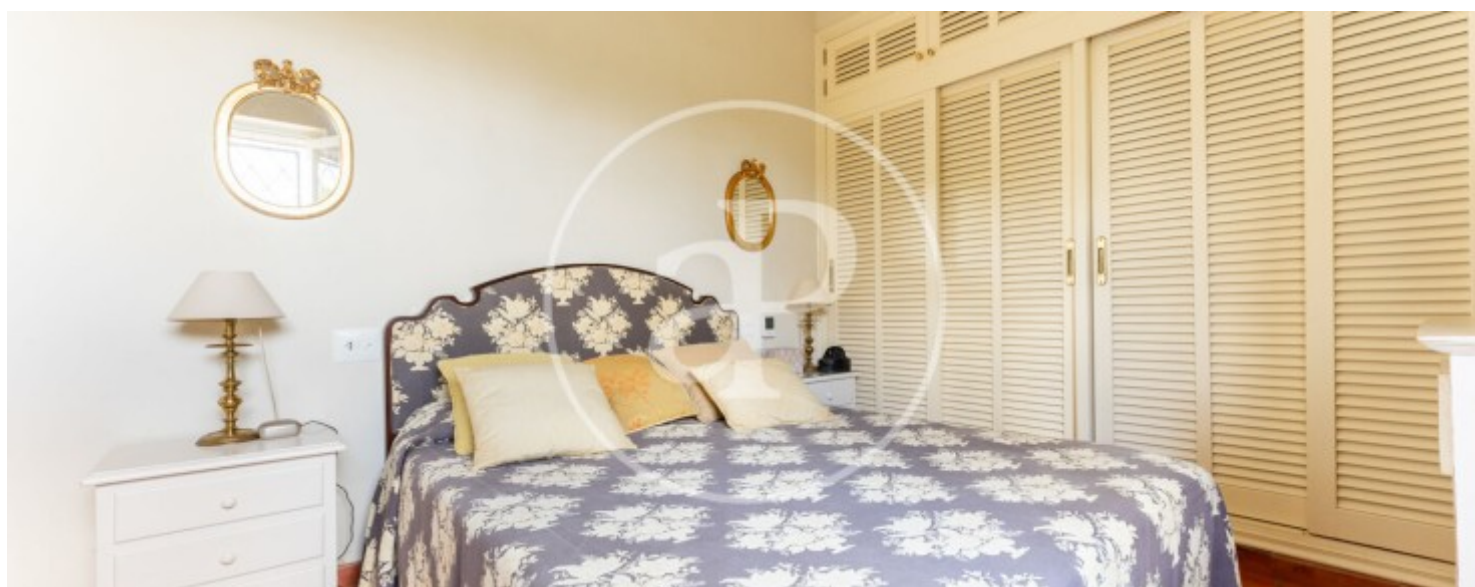
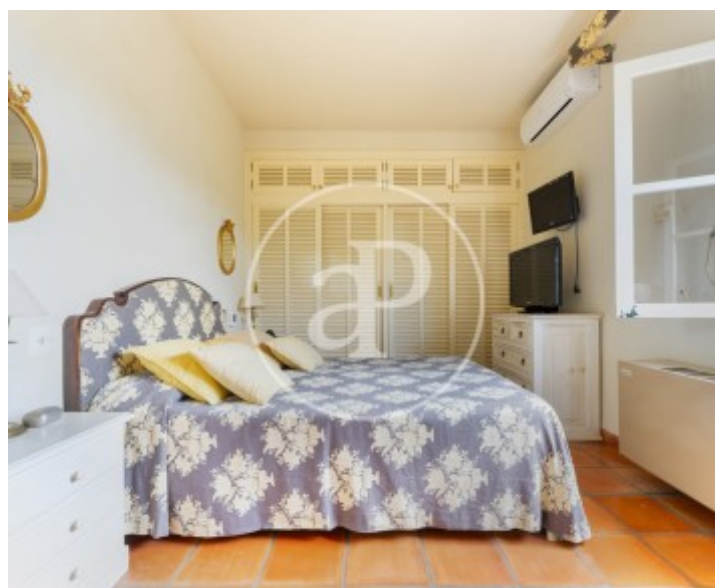
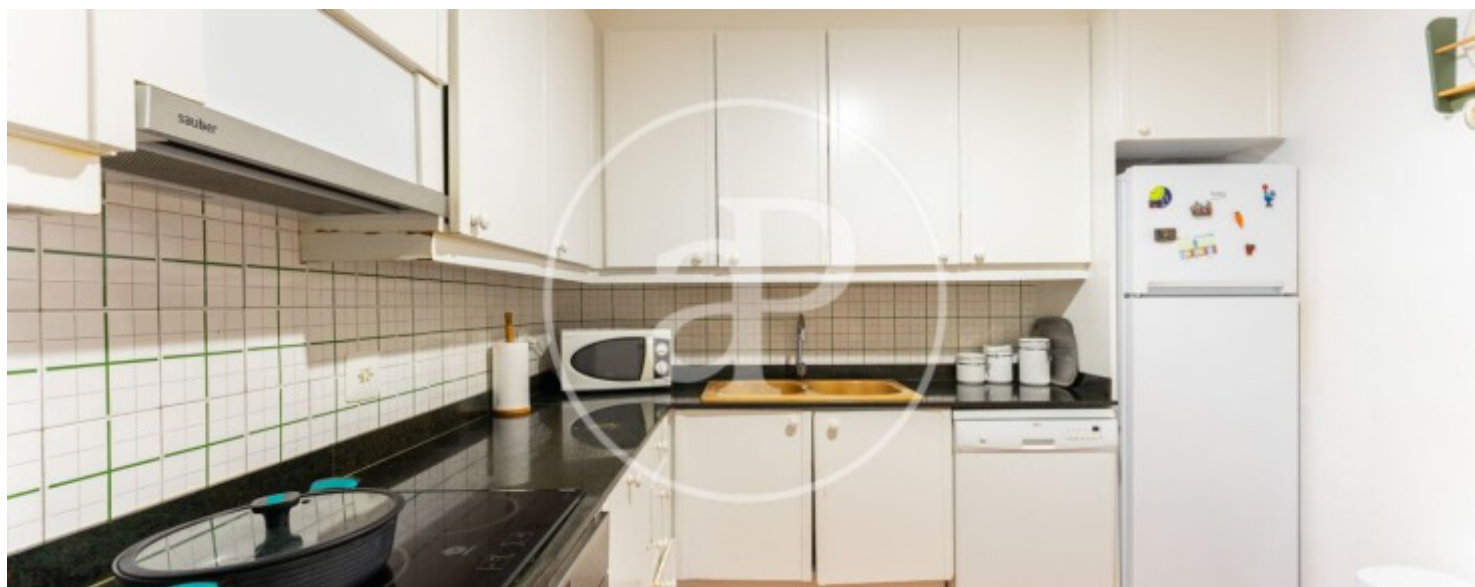
REF. VPM2502021





Lloseta

REF. VPM2502021



Lloseta

REF. VPM2502021





Lloseta

REF. VPM2502021



The information about any property is not binding to any offer or contract. Any verbal or written declaration made by aProperties with regards to the value or condition of the property should not be considered accurate or factual. The pictures make reference to some parts of the property at the times that they were taken. The areas, dimensions and distances that are given are approximate and should be checked by the client. The images are computer generated and are just an approximate indication of the real appearance of the property; these may change at any time. The information with regards to the property may also change at any time.

For **more information** or  
to make an appointment

[apropertiespalma@aproperties.es](mailto:apropertiespalma@aproperties.es)  
Tel: 871 16 01 60  
[www.aproperties.es](http://www.aproperties.es)