



L'Eliana

REF. VV2008014-1

House with terrace for sale in La Eliana (Valencia)

Features

- ✓ Heating
- ✓ AACC
- ✓ Backyard
- ✓ Has parking
- ✓ Boxroom
- ✓ Terrace
- ✓ Pool

Price

420,000 €

Surface
249 m²

Plot surface
500 m²

Bedrooms
4

Bathrooms
3



Charming property, with lots of light, space, tasteful design and the quality of its materials are irresistible along with its unusual distribution.

The house has 249 m2 of construction distributed over two floors with easy access. This exclusive home is on a 500m2 plot located in one of the best areas of La Eliana, near the El Clot metro station (municipal district of Ribarroja del Turia). The house has been renovated up to two times, with generosity and taste. On the main floor we find a spacious 50m2 living-dining room, with many design elements, gray floor resistant to high traffic and modern with two large windows that flood the room with light and allow perfect

communication with the hall, the kitchen open to the dining room, garden and pool. Thanks to two sliding doors that use the rooms in diaphanous, open / communicated, giving it a concept of circular transit around the central staircase, or cozy, intimate and independent rooms. Next to the living room there is a large and modern kitchen with double access, direct exit to the outside (paella / BBQ area) through the water area. The kitchen has a built-in oven and microwave and a generous window that looks out onto the outside, allowing plenty of light throughout the day. We access the upper...

Contact us,
we will be happy to assist you,
to offer you more details and information.

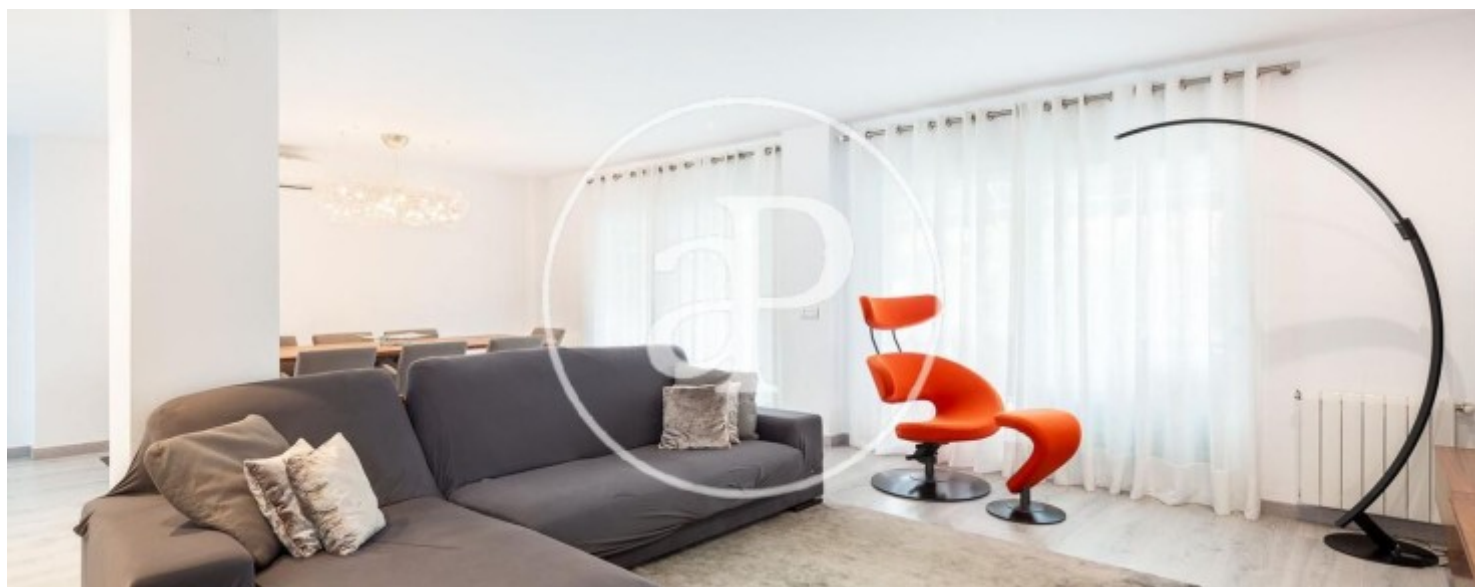
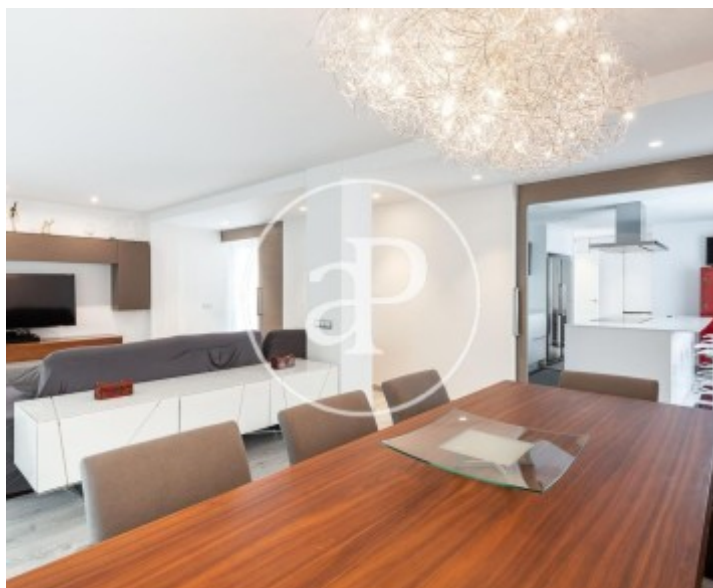
L'Elia

REF. VV2008014-1



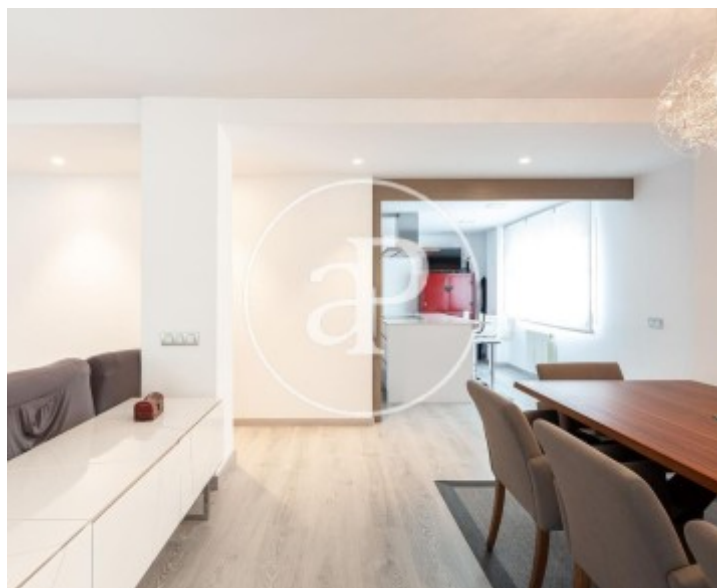
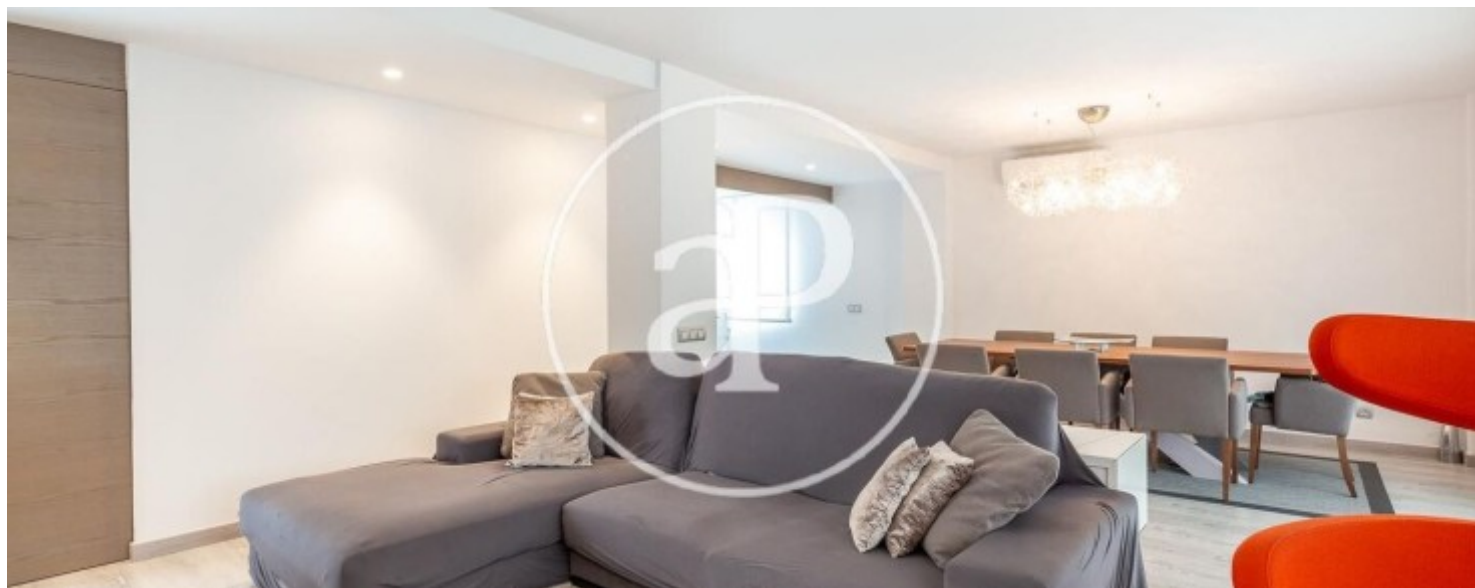
L'Eliana

REF. VV2008014-1



L'Eliana

REF. VV2008014-1



L'Eliana

REF. VV2008014-1



The information about any property is not binding to any offer or contract. Any verbal or written declaration made by aProperties with regards to the value or condition of the property should not be considered accurate or factual. The pictures make reference to some parts of the property at the times that they were taken. The areas, dimensions and distances that are given are approximate and should be checked by the client. The images are computer generated and are just an approximate indication of the real appearance of the property; these may change at any time. The information with regards to the property may also change at any time.

For **more information** or
to make an appointment

apropertiesvalencia@aproperties.es
Tel: 96 128 59 65
www.aproperties.es