

La Pobla de Vallbona

REF. VV2403007



## House for sale in Pobla de Vallbona

### Features

Surface

**148 m<sup>2</sup>**

Bedrooms

**3**

Bathrooms

**3**

- ✓ Heating
- ✓ AACC
- ✓ Terrace
- ✓ Has parking

Price

**270,000 €**



**aProperties presents this bright semi-detached house, situated on a spacious corner plot in the Maravisa urbanization, which provides the space and comfort of a detached villa.**

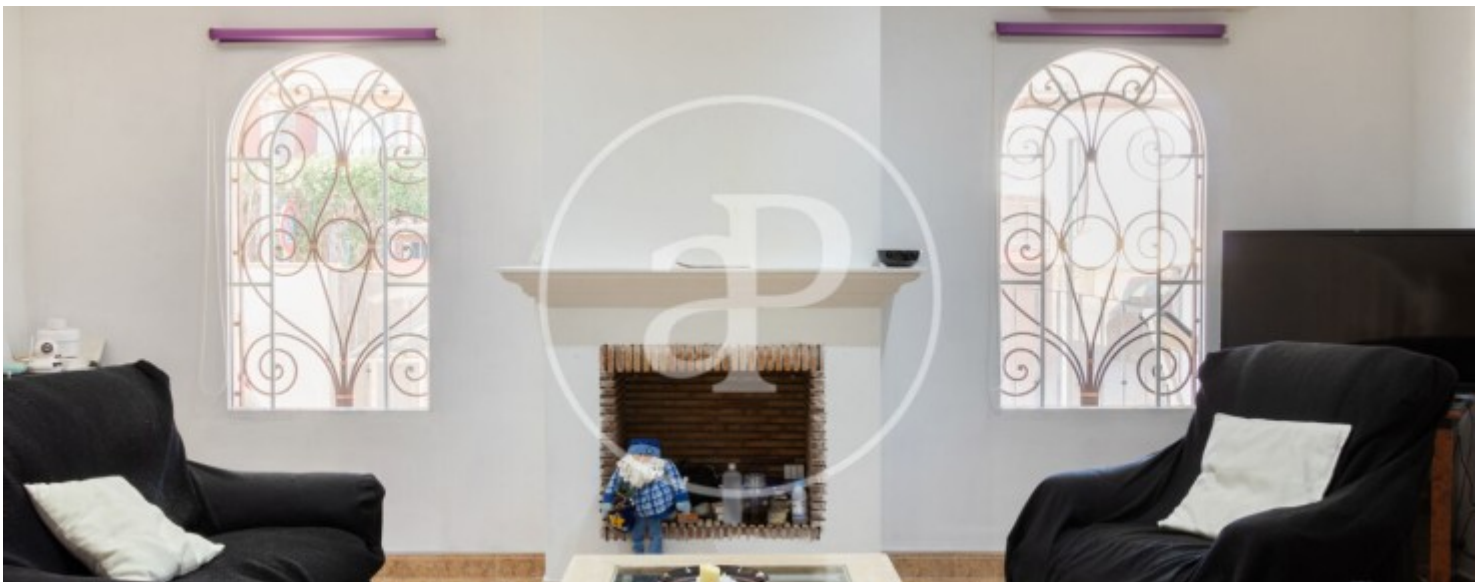
With 200 m<sup>2</sup> of construction, this cosy villa is distributed over two floors and a large basement of 65 m<sup>2</sup>, offering a magnificent possibility of incorporating new spaces. On the main floor, you will be greeted by a spacious living/dining room with a fireplace, perfect for creating a homely atmosphere, and a complete bathroom. We will then move on to the independent and fully equipped kitchen with the perfect space to have everything at hand. On the same floor we find the separate laundry room

with washer/dryer, with exit to the recreation area where you will find a practical barbecue area and a covered garage for two cars, providing security and comfort for your vehicles. In addition, a large and cool terrace invites you to relax and take advantage of the good weather. The first floor houses three double bedrooms, each with spacious built-in wardrobes to keep everything organised and a complete bathroom. Two of them have access to a spacious balcony. In terms of features, this villa stands out for its energy efficiency, with solar hot water and a gas boiler for cloudy or rainy...

**Contact us,**  
we will be happy to assist you,  
to offer you more details and information.

La Pobla de Vallbona

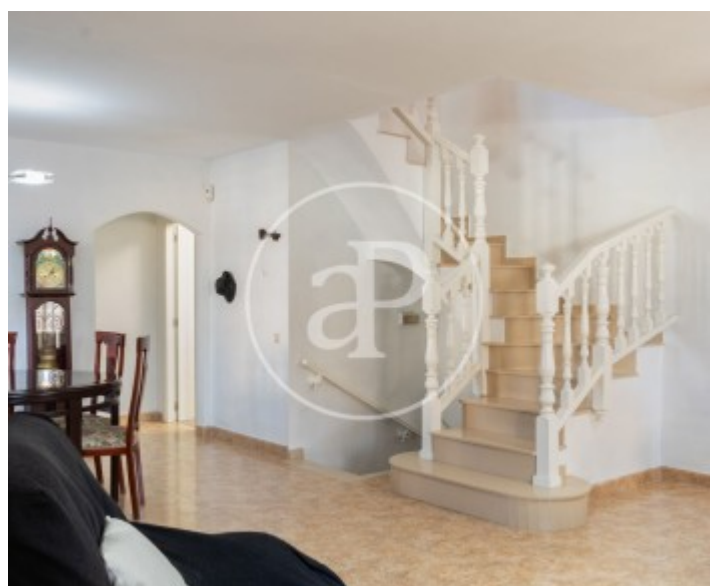
REF. VV2403007





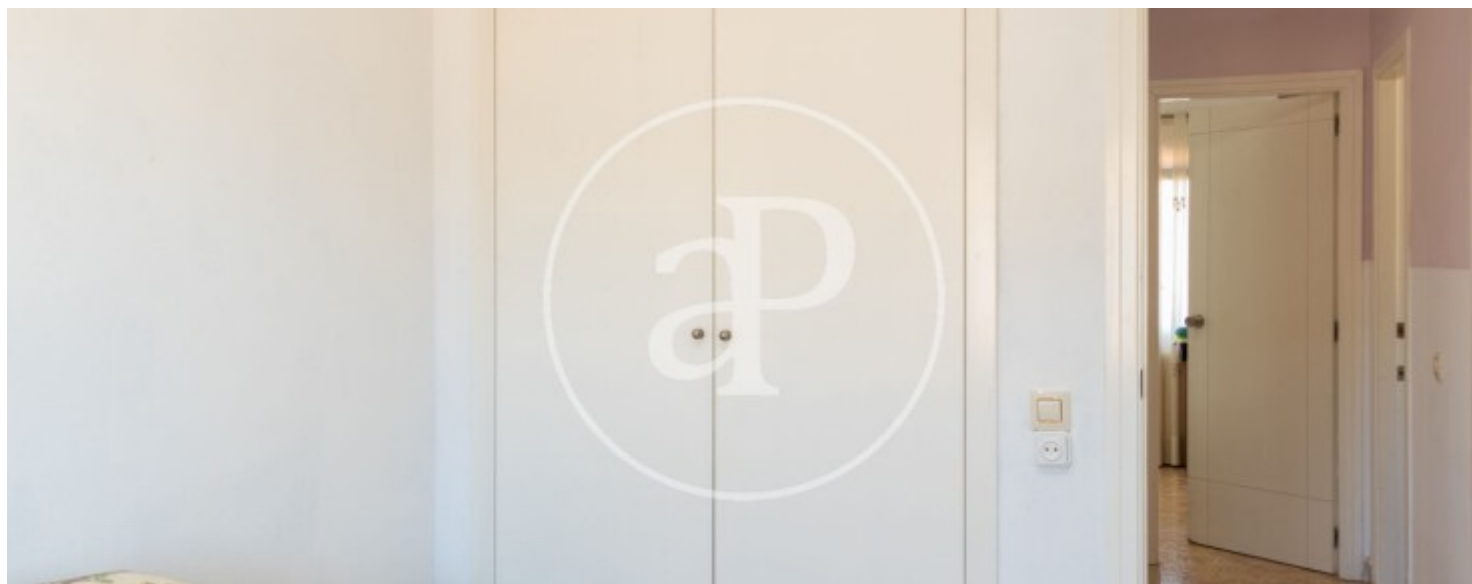
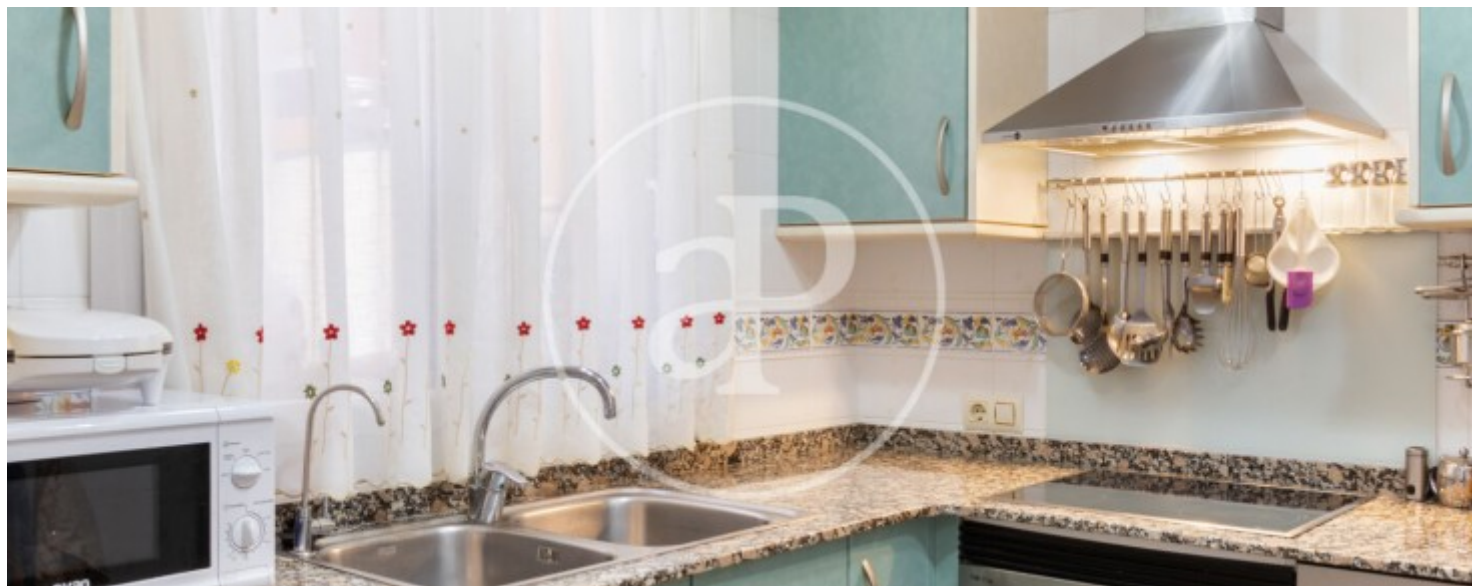
La Pobla de Vallbona

REF. VV2403007



La Pobla de Vallbona

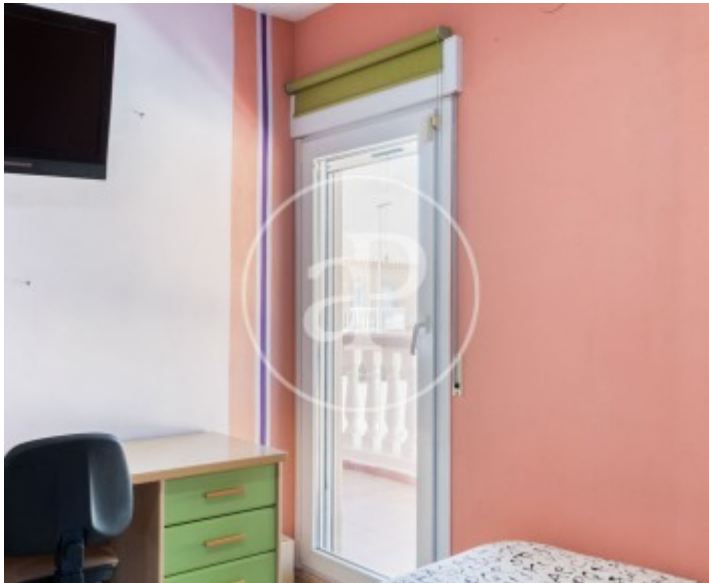
REF. VV2403007





La Pobla de Vallbona

REF. VV2403007



The information about any property is not binding to any offer or contract. Any verbal or written declaration made by aProperties with regards to the value or condition of the property should not be considered accurate or factual. The pictures make reference to some parts of the property at the times that they were taken. The areas, dimensions and distances that are given are approximate and should be checked by the client. The images are computer generated and are just an approximate indication of the real appearance of the property; these may change at any time. The information with regards to the property may also change at any time.



For **more information** or  
to make an appointment

[apropertiesvalencia@aproperties.es](mailto:apropertiesvalencia@aproperties.es)  
Tel: 96 128 59 65  
[www.aproperties.es](http://www.aproperties.es)