

(La Pobla de Vallbona)

Ref: ONV2401002



New building (work) for sale with Terrace in La Pobla de Vallbona

new building (work) with Terrace and views in La Pobla de Vallbona., swimming pool, air conditioning, fitted wardrobes, garden and heating.

La Pobla de Vallbona

Unit pr

Completion Q2 2025

FEATURES

Surface 142 m² / 188 m² terrace

4 Rooms

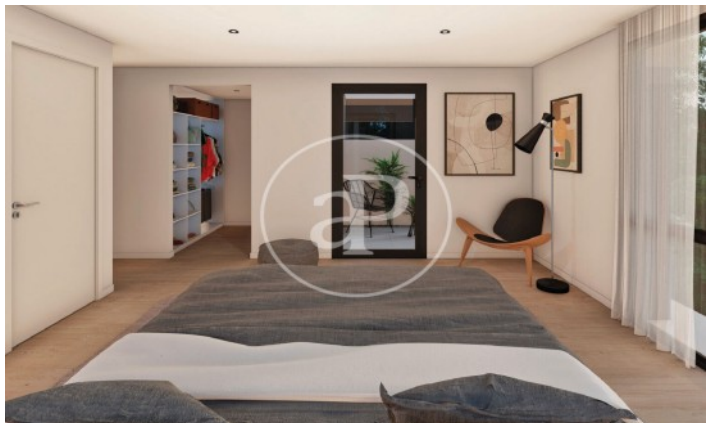
3 Toilets

- ✓ Views
- ✓ Heating
- ✓ AACC
- ✓ Terrace
- ✓ Backyard
- ✓ Pool

Price 324,000 €

(La Pobla de Vallbona)

Ref: ONV2401002

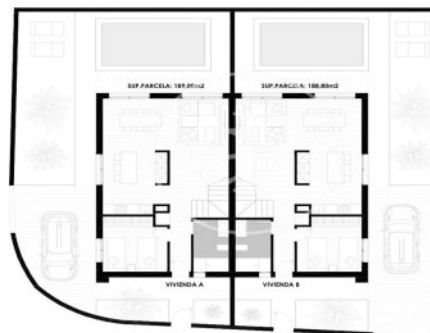


(La Pobla de Vallbona)

Ref: ONV2401002



PLANTA GENERAL



COTAS Y SUPERFICIES
Planta Baja | Vivienda Tipo



CUADRO DE SUPERFICIES		
DESCRIPCION	SUP. ÚTIL	SUP. CONJ.
Acceso-pasillo	4.98 m ²	
Bañó	5.25 m ²	
Cuarto de baño 1	9.87 m ²	
Cocina	11.28 m ²	
Sala y Comedor-Biblioteca	28.82 m ²	
Acceso - salidas	2.40 m ²	
Terraza cubierta	5.22 m ²	
TOTAL PLANTA BAJA	67.61 m²	71.75 m²
Pasillo	4.27 m ²	
Acceso	4.77 m ²	
Dormitorio 2	11.76 m ²	
Dormitorio 3	10.44 m ²	
Bañó	4.88 m ²	
Cuarto de baño principal	11.14 m ²	
Vestidor	4.88 m ²	
Bañó en suite	4.88 m ²	
Terraza descubierta	4.18 m ²	
TOTAL PLANTA PRIMERA	62.45 m²	71.87 m²
TOTAL VIVIENDA	130.13 m²	143.62 m²
TOTAL PISCINA	14.80 m²	
TOTAL SOLAR VIVIENDAS	45.00 m²	
TOTAL CONTRUO	214.83 m²	

COTAS Y SUPERFICIES
Planta 1ª | Vivienda Tipo



CUADRO DE SUPERFICIES		
DESCRIPCION	SUP. ÚTIL	SUP. CONJ.
Acceso-pasillo	4.98 m ²	
Bañó	5.25 m ²	
Cuarto de baño 1	9.87 m ²	
Cocina	11.28 m ²	
Sala y Comedor-Biblioteca	28.82 m ²	
Acceso - salidas	2.40 m ²	
Terraza cubierta	5.22 m ²	
TOTAL PLANTA BAJA	67.61 m²	71.75 m²
Pasillo	4.27 m ²	
Acceso	4.77 m ²	
Dormitorio 2	11.76 m ²	
Dormitorio 3	10.44 m ²	
Bañó	4.88 m ²	
Cuarto de baño principal	11.14 m ²	
Vestidor	4.88 m ²	
Bañó en suite	4.88 m ²	
Terraza descubierta	4.18 m ²	
TOTAL PLANTA PRIMERA	62.45 m²	71.87 m²
TOTAL VIVIENDA	130.13 m²	143.62 m²
TOTAL PISCINA	14.80 m²	
TOTAL SOLAR VIVIENDAS	45.00 m²	
TOTAL CONTRUO	214.83 m²	

The information about any property is not binding to any offer or contract. Any verbal or written declaration made by aProperties with regards to the value or condition of the property should not be considered accurate or factual. The pictures make reference to some parts of the property at the times that they were taken. The areas, dimensions and distances that are given are approximate and should be checked by the client. The images are computer generated and are just an approximate indication of the real appearance of the property; these may change at any time. The information with regards to the property may also change at any time.

Contact us today for more information or to arrange a viewing

Tel: 96 128 59 65

apropertiesvalencia@aproperties.es

<https://www.aproperties.es>