

La Pobla de Vallbona

REF. AV2402108



## House with terrace for rent in La Pobla de Vallbona

### Features

- ✓ Views
- ✓ AACC
- ✓ Backyard
- ✓ Has parking
- ✓ Furnished
- ✓ Terrace
- ✓ Pool

Price

**1,350 €**

Surface

**137 m<sup>2</sup>**

Bedrooms

**3**

Bathrooms

**2**



**Beautiful villa, available from July 1, in La Pobla de Vallbona (Maquiva) with everything you need to enjoy your summer days with family and friends.**

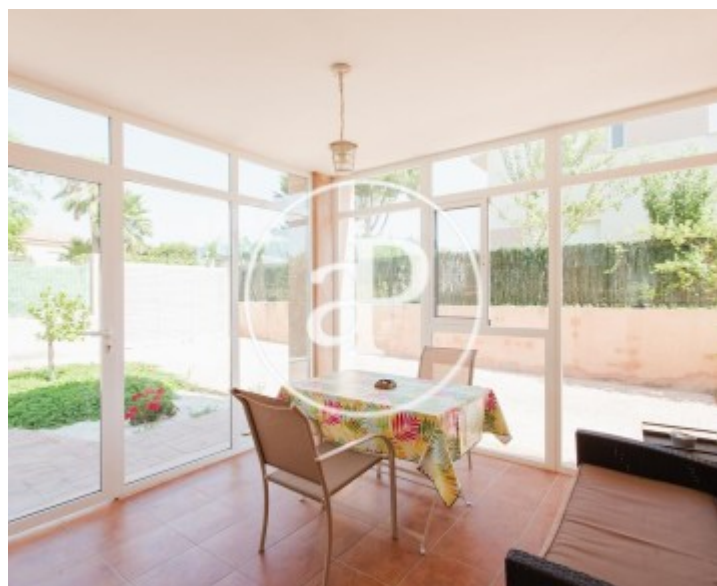
Supplies included in temporary rent. Just in front of the entrance to the house, we find a glazed porch, we can spend relaxing afternoons. On the ground floor we find the living-dining room, with a fully equipped kitchen, which has access to the terrace and rear garden, a full bathroom with shower and a sofa bed for children. The staircase takes us to the first floor where we find three double rooms and a full bathroom with a shower, as well as a terrace-solarium, where you can enjoy the sun. Outside we have a

comfortable garden with trees, plants and decorative pebbles, and a large terrace to eat outside and enjoy the barbecue. The garden area has a large removable round pool, with access by stairs. Creating great security for the little ones. This chalet has everything you need to enjoy a nice and comfortable vacation. Temporary Chalet up to 11 months. The price varies by the number of months rented. Let me know and we will arrange a visit!

**Contact us,**  
we will be happy to assist you,  
to offer you more details and information.

La Pobla de Vallbona

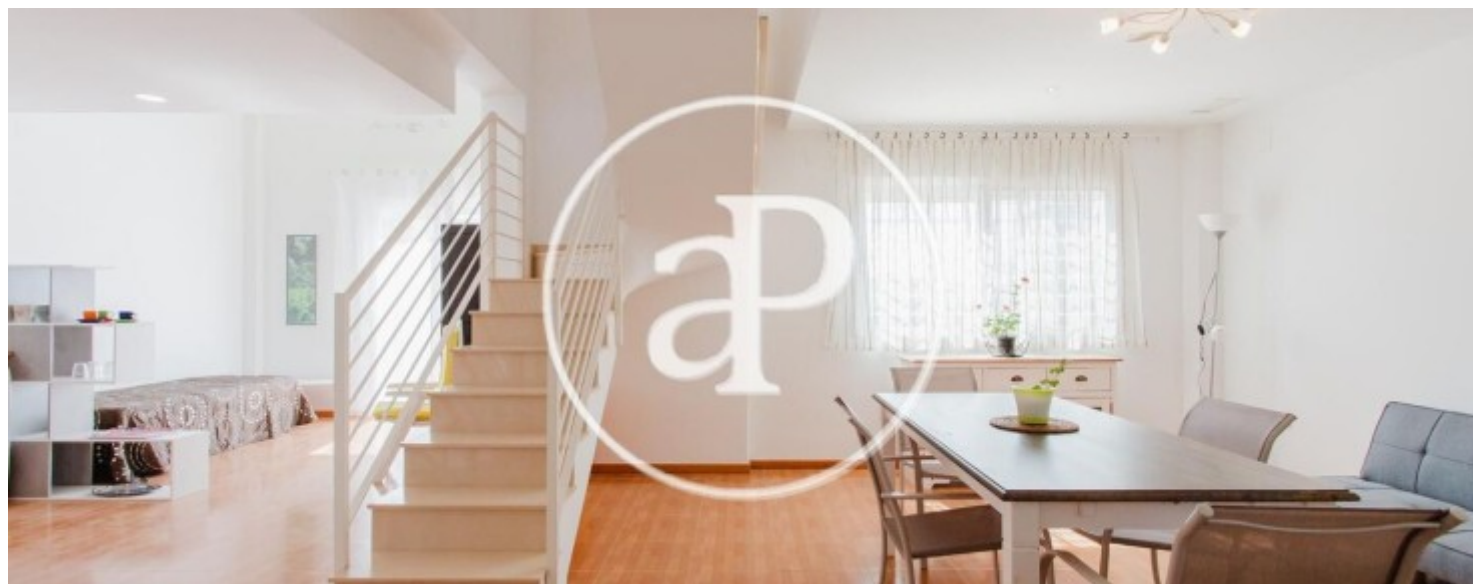
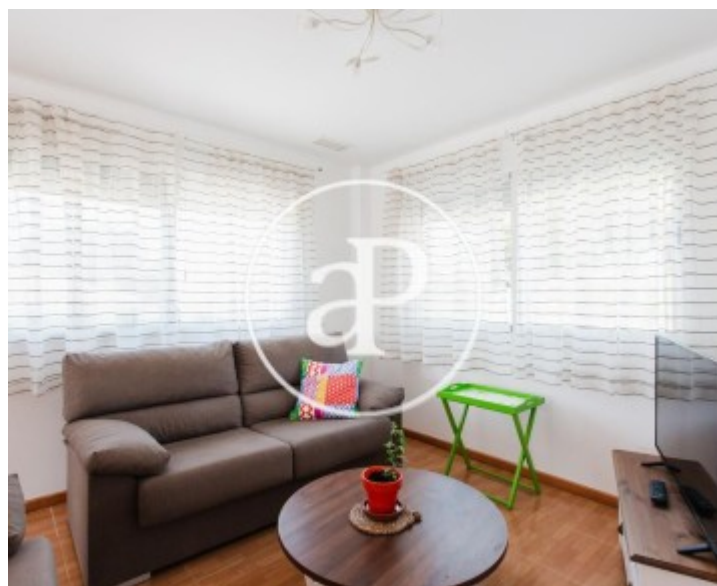
REF. AV2402108





La Pobla de Vallbona

REF. AV2402108



La Pobla de Vallbona

REF. AV2402108





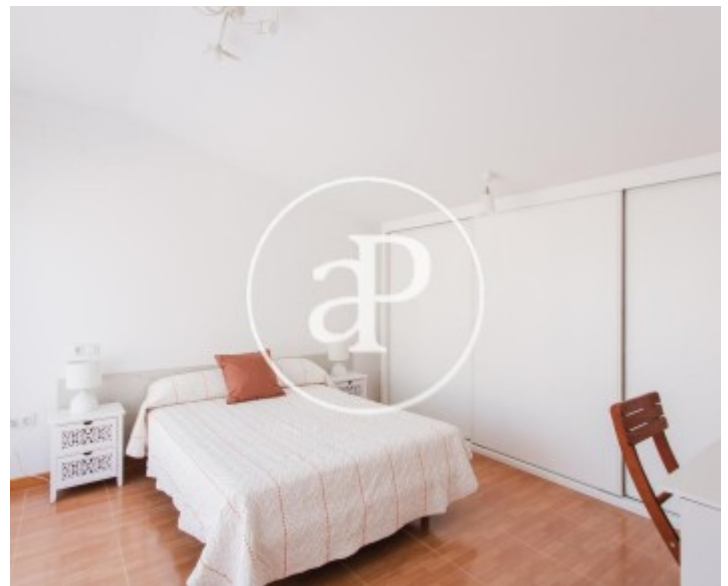
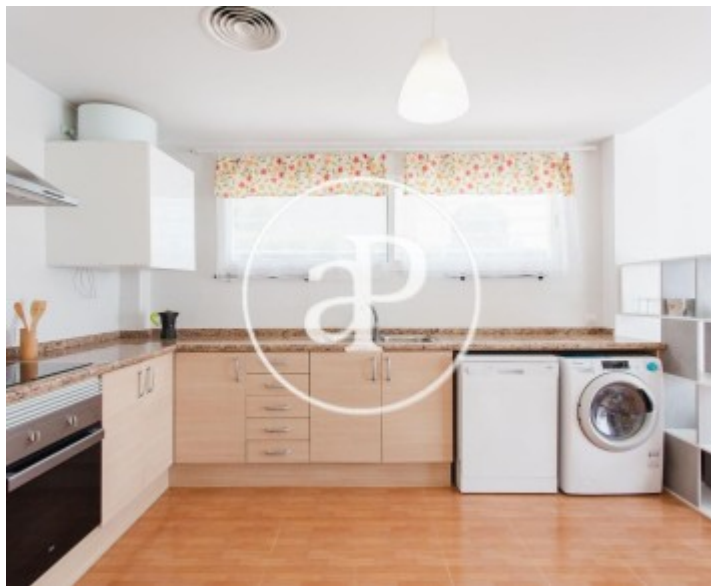


**APROPERTIES**  
REAL ESTATE

Calle Mossen Femades 3, bajo dcha. Ed. Lauria  
46002 Valencia  
T. 96 128 59 65  
[www.aproperties.es](http://www.aproperties.es)

La Pobla de Vallbona

REF. AV2402108



The information about any property is not binding to any offer or contract. Any verbal or written declaration made by aProperties with regards to the value or condition of the property should not be considered accurate or factual. The pictures make reference to some parts of the property at the times that they were taken. The areas, dimensions and distances that are given are approximate and should be checked by the client. The images are computer generated and are just an approximate indication of the real appearance of the property; these may change at any time. The information with regards to the property may also change at any time.



For **more information** or  
to make an appointment

[apropertiesvalencia@aproperties.es](mailto:apropertiesvalencia@aproperties.es)  
Tel: 96 128 59 65  
[www.aproperties.es](http://www.aproperties.es)