



El Soto de la Moraleja, La Moraleja

REF. VMN2602007

Chalet for sale in La Moraleja

Features

- ✓ Heating
- ✓ AACC
- ✓ Terrace
- ✓ Backyard
- ✓ Pool
- ✓ Has parking

Surface

196 m²

Bedrooms

3

Bathrooms

5

Price

1,760,000 €



aProperties sells this exclusive semi-detached villa in one of the most sought-after areas of El Soto de la Moraleja, with private garden, pool, glazed porch and maximum privacy.

Ideal for families looking for comfort, tranquility and proximity to services, transportation and schools. Distribution of the house: • Main floor: large living room with fireplace, office-library, courtesy bathroom and large glass terrace collapsible in summer with direct access to the pool and private garden. • First floor: 2 en-suite bedrooms (main with dressing room and terrace). • Second floor: diaphanous attic with full en-suite bathroom. • Ground floor: kitchen with office, dining room, laundry area, p

antry, toilet and possibility of service room. Key features and advantages: • Private and secure urbanization with security • Large green areas, community pool and glazed porch • Terrace and garden views • Proximity to schools, transport and services • Ideal for families looking for comfort, privacy and exclusive lifestyle The prestigious neighborhood of Soto, adjacent to the Moraleja, is an exclusive residential environment that offers you tranquility without sacrificing the comfort of being close to the city. El Soto and la Moraleja are synonymous with quality of life, with a family lifestyle and easy...

Contact us,
we will be happy to assist you,
to offer you more details and information.

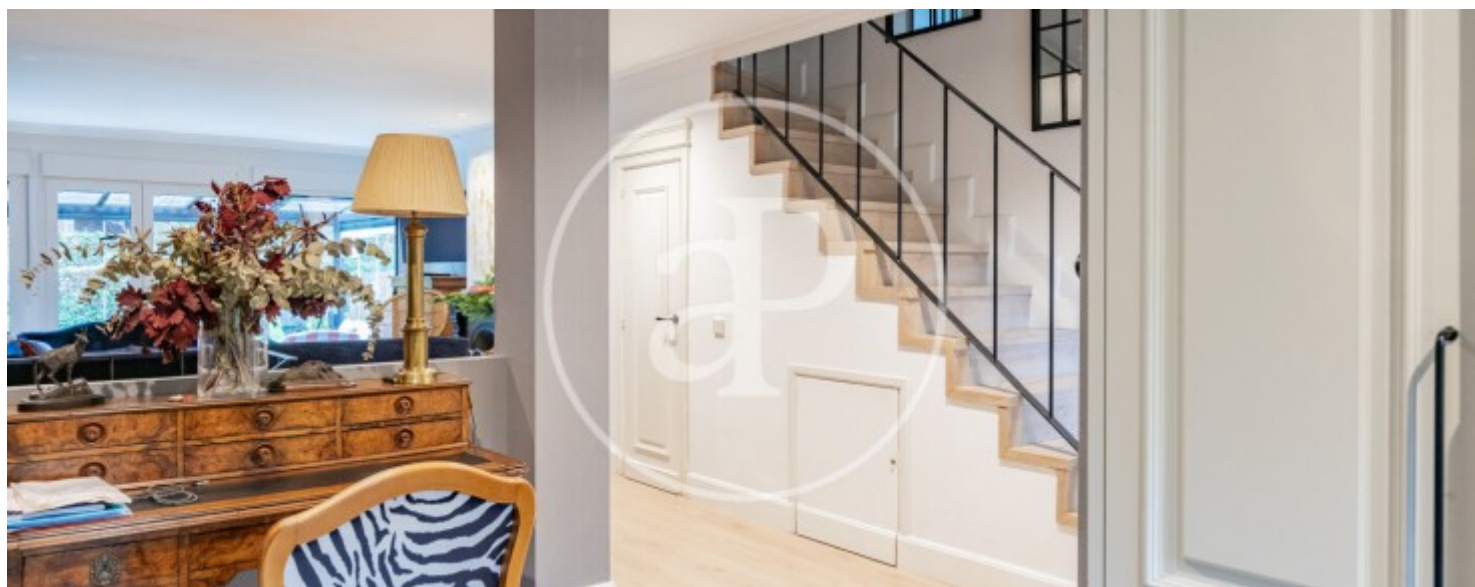
El Soto de la Moraleja, La Moraleja

REF. VMN2602007



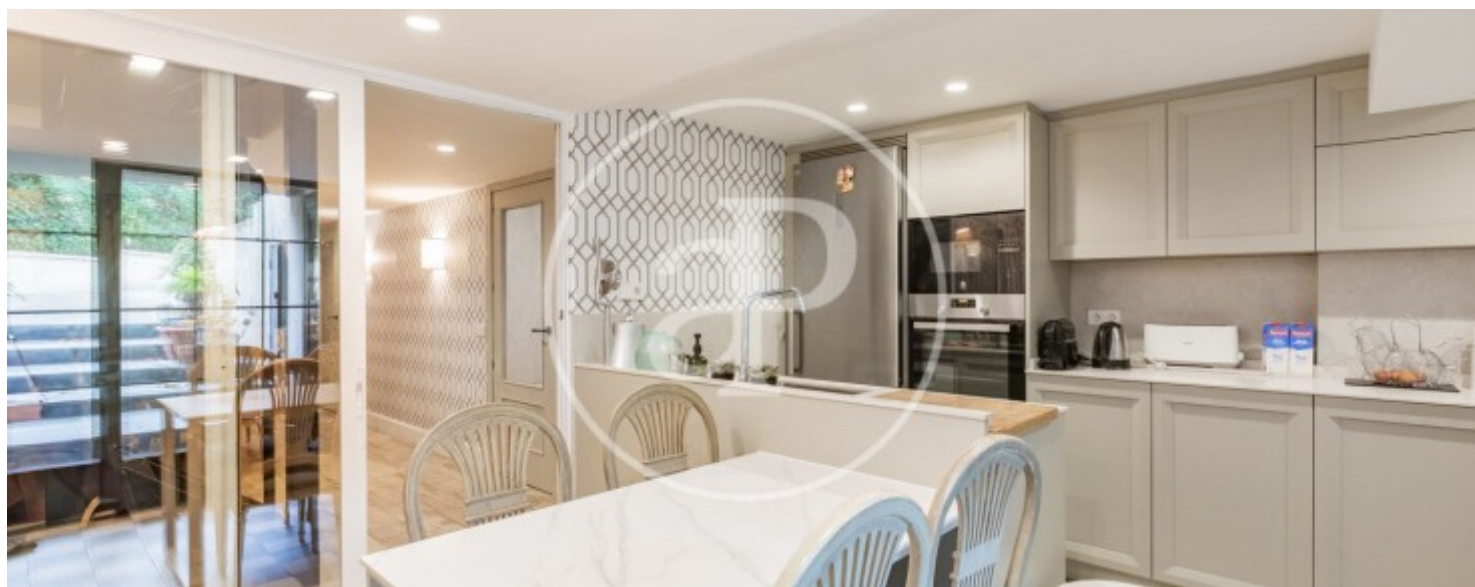
El Soto de la Moraleja, La Moraleja

REF. VMN2602007



El Soto de la Moraleja, La Moraleja

REF. VMN2602007



El Soto de la Moraleja, La Moraleja

REF. VMN2602007



The information about any property is not binding to any offer or contract. Any verbal or written declaration made by aProperties with regards to the value or condition of the property should not be considered accurate or factual. The pictures make reference to some parts of the property at the times that they were taken. The areas, dimensions and distances that are given are approximate and should be checked by the client. The images are computer generated and are just an approximate indication of the real appearance of the property; these may change at any time. The information with regards to the property may also change at any time.

For **more information** or
to make an appointment

apropertiesmadrid@aproperties.es
Tel: 91 800 54 65
www.aproperties.es