

Arroyo de la Vega, La Moraleja

REF. VMN2607001

Apartment for sale in Rafael Nadal

Features

- ✓ Heating
- ✓ AACC
- ✓ Gym
- ✓ Has parking
- ✓ Boxroom
- ✓ Pool
- ✓ Lift

Surface

228 m²

Bedrooms

2

Bathrooms

2



Price

950,000 €

If you are looking for a luxury apartment for sale in Arroyo de la Vega, this property on Avenida Rafael Nadal stands out for combining contemporary design, privacy, and exceptional construction quality.

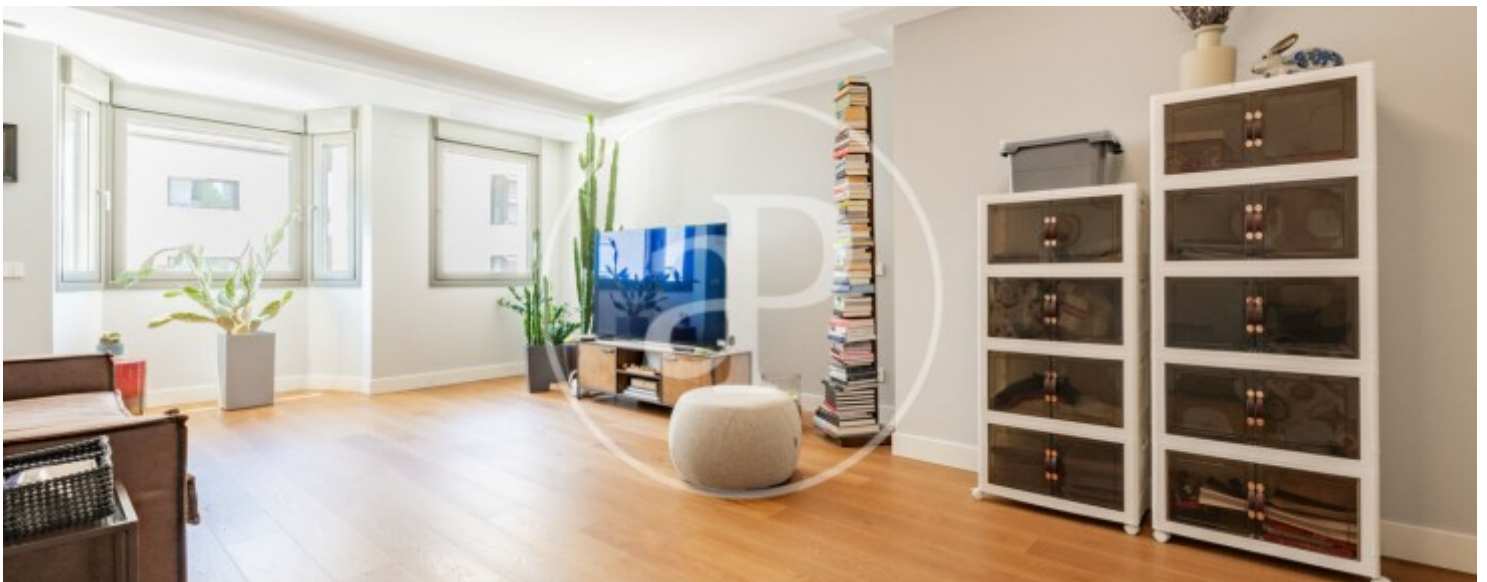
Built in 2024 by Levitt, this apartment of 228 sq m built (110 sq m of living space) is in excellent condition and enjoys a south orientation, which guarantees natural light throughout the entire day. It is a home specifically designed for those who value comfort, technology, and an exclusive residential location, well-connected to Madrid. The property is distributed through an elegant entrance hall with a wardrobe, which leads to a kitchen with an eat-in area fully

equipped with high-end appliances: induction hob, large-format oven, American-style refrigerator, dishwasher, microwave, and a dual-temperature wine cellar. It features an independent laundry room with a washing machine and dryer. The living room is spacious and has large windows. It features 2 bedrooms and 2 full bathrooms; one of the bedrooms is a master suite with a private bathroom. Additionally, the entire home features electric blinds and a home automation system. The residential complex offers an exclusive lifestyle with 24-hour security, a swimming pool, a paddle tennis court, a...

Contact us,
we will be happy to assist you,
to offer you more details and information.

Arroyo de la Vega, La Moraleja

REF. VMN2607001



Arroyo de la Vega, La Moraleja

REF. VMN2607001



Arroyo de la Vega, La Moraleja

REF. VMN2607001



Arroyo de la Vega, La Moraleja

REF. VMN2607001



The information about any property is not binding to any offer or contract. Any verbal or written declaration made by aProperties with regards to the value or condition of the property should not be considered accurate or factual. The pictures make reference to some parts of the property at the times that they were taken. The areas, dimensions and distances that are given are approximate and should be checked by the client. The images are computer generated and are just an approximate indication of the real appearance of the property; these may change at any time. The information with regards to the property may also change at any time.

For **more information** or
to make an appointment

apropertiesmadrid@aproperties.es
Tel: 91 800 54 65
www.aproperties.es