



Conde Orgaz - Piovera, Hortaleza

REF. VMN2305011

Detached villa for sale in Ronda de la Avutarda.

Features

- ✓ Heating
- ✓ AACC
- ✓ Backyard
- ✓ Gym
- ✓ Has parking
- ✓ Boxroom
- ✓ Terrace
- ✓ Pool
- ✓ Lift

Surface
780 m²

Plot surface
1,560 m²

Bedrooms
5

Bathrooms
6



Price
3,500,000 €

DETACHED VILLA WITH STORAGE ROOM, YARD AND GARAGE FOR SALE IN CONDE ORGAZ - PIOVERA.

aProperties manages the sale of this impressive property in Parque Conde Orgaz. It has 5 bedrooms and 5 bathrooms. Ground floor: Entrance hall, guest toilet, living room, dining room, library, kitchen, office, maid's room with bathroom. First floor: Master bedroom with ensuite bathroom and dressing room, three very spacious bedrooms, each with ensuite bathroom. Storeroom and large garage with 4 parking spaces of 105 m². Parque Conde Orgaz is one of the most luxurious areas of Madrid. With direct access to the M-30 and M-40, and 5 minutes from the centre of Madrid and the

Adolfo Suárez Madrid-Barajas International Airport as well as the IFEMA fairgrounds. Nearby you can find schools such as the Lycée Français, San José del Parque - Maristas Colegio Bristol, Santa María de la Hispanidad, Alameda de Osuna, Colegio GAUDEM, Montessori, Dallington School, Nuestra Señora Santa María, Santa María de la Hispanidad, Escuela Iraquí de Madrid, Instituto saudí de Madrid, Ecole Maternelle Française Pomme D'api, Colegio Brains María Lombillo, etc., shopping centres such as: Corte...

Contact us,
we will be happy to assist you,
to offer you more details and information.

Conde Orgaz - Piovera, Hortaleza

REF. VMN2305011



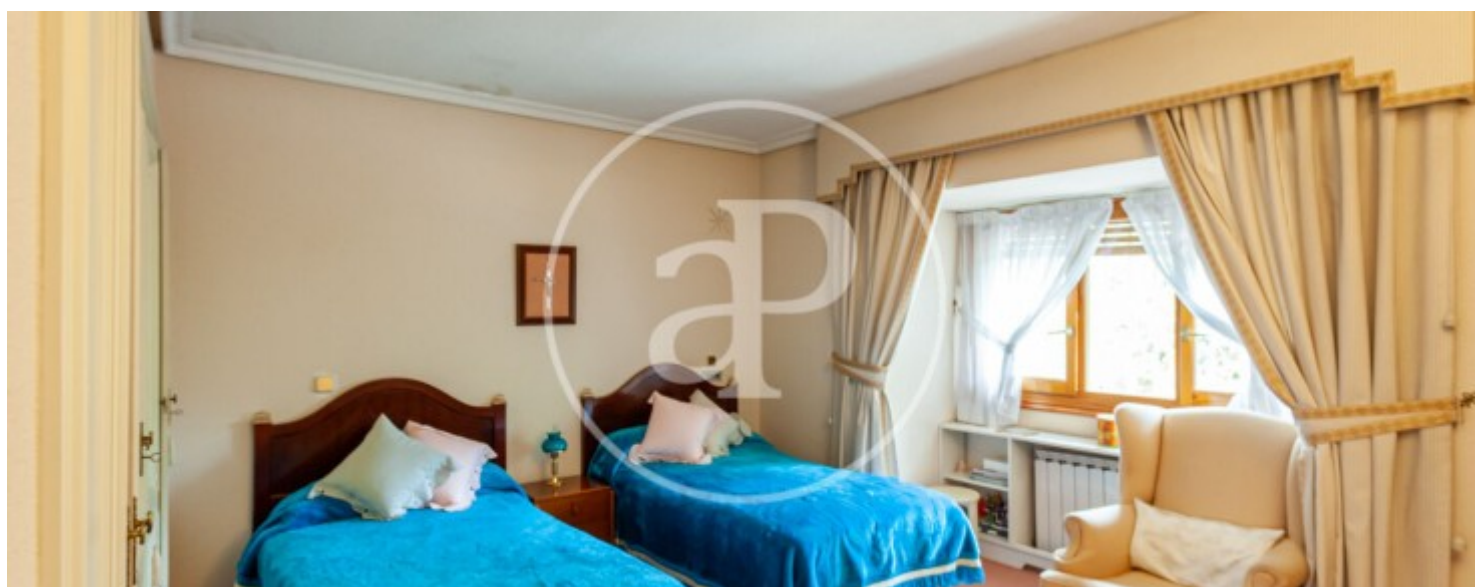
Conde Orgaz - Piovera, Hortaleza

REF. VMN2305011



Conde Orgaz - Piovera, Hortaleza

REF. VMN2305011



Conde Orgaz - Piovera, Hortaleza

REF. VMN2305011



The information about any property is not binding to any offer or contract. Any verbal or written declaration made by aProperties with regards to the value or condition of the property should not be considered accurate or factual. The pictures make reference to some parts of the property at the times that they were taken. The areas, dimensions and distances that are given are approximate and should be checked by the client. The images are computer generated and are just an approximate indication of the real appearance of the property; these may change at any time. The information with regards to the property may also change at any time.

For **more information** or
to make an appointment

apropertiesmadrid@aproperties.es
Tel: 91 800 54 65
www.aproperties.es