

(Parquelagos - Puente Nuevo)

Ref: ONM2311001



## *New development for sale Parquelagos.*

Private and gated community with communal gardens and swimming pools, comprising 28 semi-detached villas, all with more than 169 m<sup>2</sup> + 500 m<sup>2</sup> of private plot. One of them, a detached villa of more than 350 m<sup>2</sup> and 2.000 m<sup>2</sup> of private plot. This new development is located in La Colonia de Torrelodones, in the northwest area of Madrid and in a protected area of the regional park of the middle course of the Guadarrama, specifically in the urbanisation Los Jarales, 4 km from the centre of Galapagar. Very well communicated by bus to any point of interest, shopping areas, schools, universities and train station. The community is situated on a plot of 20.742 m<sup>2</sup> consolidated with various species of trees. The development will feature bright three and four-bedroom homes, surrounded by a very natural environment and equipped with maximum energy efficiency and sustainability. There are various types of homes, all with different prices, depending on m<sup>2</sup>, orientation, location within the development, etc. The residential complex offers communal areas for the whole family, in an unbeatable enclave for its vegetation, with large natural garden areas and communal swimming pool. The building work has begun, call us and reserve yours. Can you imagine living here?

Galapagar /  
Parquelagos - Puente Nuevo  
Unit pr 9  
Completion Q2 2025

### **FEATURES**

Surface 253 m<sup>2</sup> / 508 m<sup>2</sup> terrace  
4 Rooms  
3 Toilets

- ✓ Views
- ✓ Heating
- ✓ Boxroom
- ✓ AACC
- ✓ Terrace
- ✓ Backyard
- ✓ Pool
- ✓ Security
- ✓ Has parking

Price 689,000 €

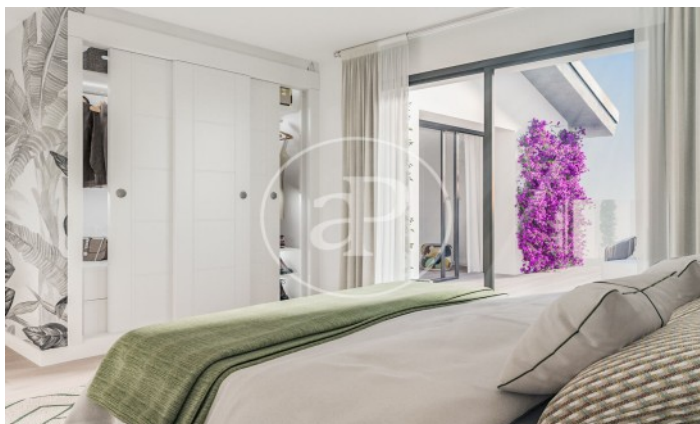
(Parquelagos - Puente Nuevo)

Ref: ONM2311001



(Parquelagos - Puente Nuevo)

Ref: ONM2311001



The information about any property is not binding to any offer or contract. Any verbal or written declaration made by aProperties with regards to the value or condition of the property should not be considered accurate or factual. The pictures make reference to some parts of the property at the times that they were taken. The areas, dimensions and distances that are given are approximate and should be checked by the client. The images are computer generated and are just an approximate indication of the real appearance of the property; these may change at any time. The information with regards to the property may also change at any time.

Contact us today for more information or to arrange a viewing

Tel: 91 800 54 65

[apropertiesmadrid@aproperties.es](mailto:apropertiesmadrid@aproperties.es)

<https://www.aproperties.es>