

(Puigpunyent)

Ref: ONPM2403003



House for sale in Esporles

Es Voltor is a project of 13 semi-detached houses with two floors, with an architecture in the most authentic Majorcan style. Each property has 3 bedrooms, 2 bathrooms (1 en-suite) and a toilet. The properties have a spacious living-dining room opening onto the terrace and a fully fitted and equipped kitchen. All properties have large southwest facing terraces and private gardens with access to the communal area with swimming pool and gardens. This traditional Mallorcan style development offers you all the details for your maximum comfort, in accordance with the new European building quality standards, guaranteeing the highest level of soundproofing and thermal insulation. The kitchen comes furnished and equipped with Siemens or similar appliances with oven, induction hob and extractor hood. The bathrooms have a suspended wooden unit, shower with level shower tray and all the built-in taps of the Tres brand. Large-format Saloni porcelain tiles have been chosen for all the rooms in the house, and this in its anti-slip version for the terraces. Underfloor heating in all rooms guarantees maximum comfort. Each property will have a private parking space with direct and independent access.

Esporles - Puigpunyent - Estellencs - Banyalbufar
Puigpunyent

Unit bj
Completion Q3 2025

FEATURES

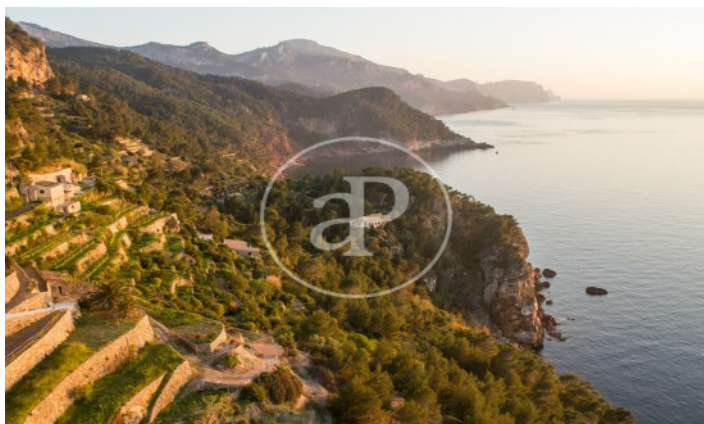
Surface 147 m² / 102 m² terrace
3 Rooms
2 Toilets 1 Restrooms

- ✓ Views
- ✓ Heating
- ✓ Furnished
- ✓ Terrace
- ✓ Backyard
- ✓ Pool
- ✓ Has parking

Price 812,000 €

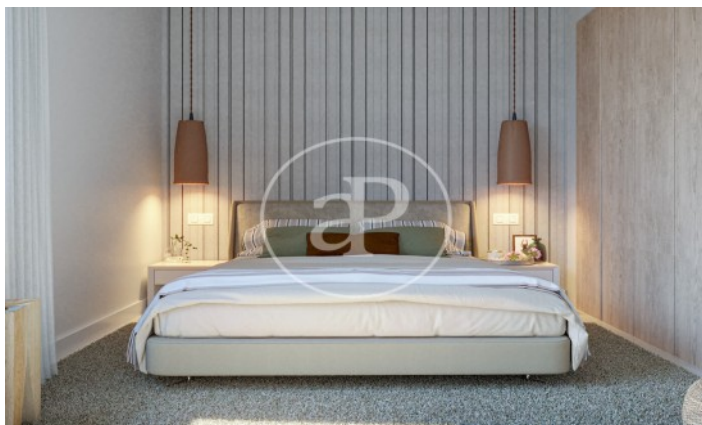
(Puigpunyent)

Ref: ONPM2403003



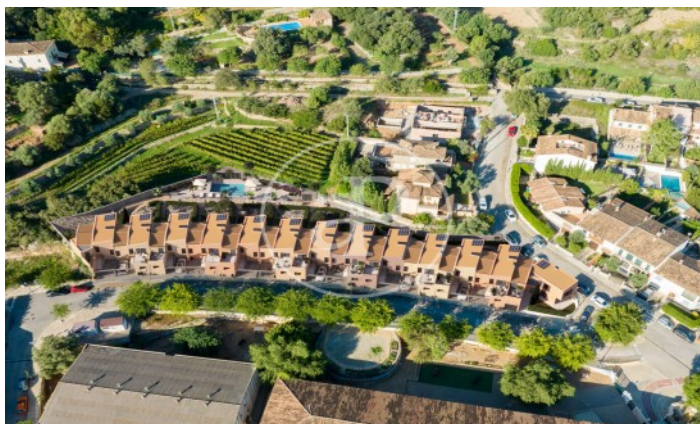
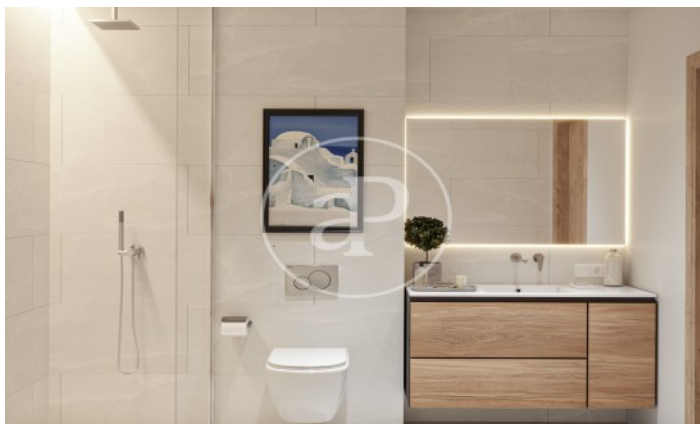
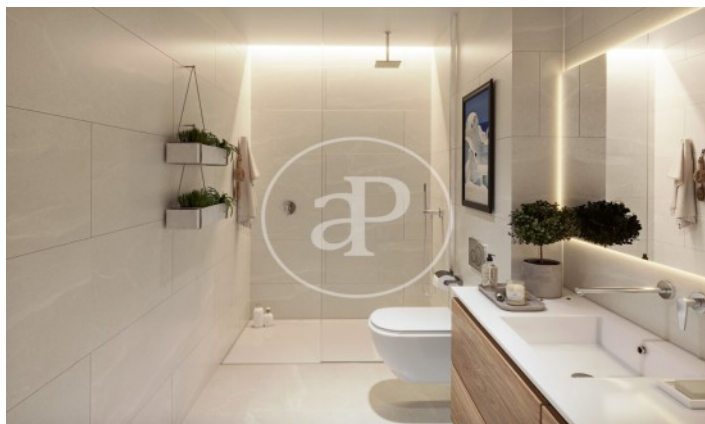
(Puigpunyent)

Ref: ONPM2403003



(Puigpunyent)

Ref: ONPM2403003



The information about any property is not binding to any offer or contract. Any verbal or written declaration made by aProperties with regards to the value or condition of the property should not be considered accurate or factual. The pictures make reference to some parts of the property at the times that they were taken. The areas, dimensions and distances that are given are approximate and should be checked by the client. The images are computer generated and are just an approximate indication of the real appearance of the property; these may change at any time. The information with regards to the property may also change at any time.

Contact us today for more information or to arrange a viewing

Tel: 871 16 01 60

apropertiespalma@aproperties.es

<https://www.aproperties.es>