



Puigpunyent, Esporles - Puigpunyent - Estellencs - Banyalbufar

REF. VPM2304041

Manor estate 18th century with 10 hectares of land to reform in Puigpunyent

Features

- ✓ Views
- ✓ Terrace
- ✓ Backyard

Price

7,500,000 €

Surface

1,500 m²

Plot surface

1,000,000 m²

Bedrooms

12

Bathrooms

4



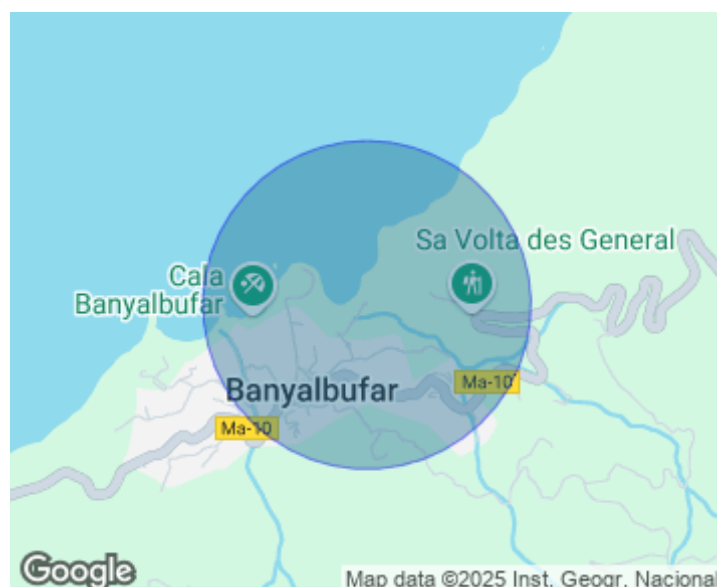
Located between the villages of Puigpunyent and Esporles is this magnificent 18th century finca, situated in a valley, on a plot of 10 hectares of land with different cultivation areas, olive grove with about 2.500 centenary olive trees, pine forest, almond trees, etc. It has a pool, two water wells, TAFONA MALLORQUINA (oil mill) as it used to be an oil production estate and with views to Galilea. The house needs a complete renovation, it is catalogued and has about 1.500 sqm built. It is built through a square courtyard. On the main façade there is a sundial and gives access to a large living-dining room with high ceilings and beams, kitchen with an old chimney which communicates with the old animal stable. The upper floor is distributed in 8 bedrooms of which 2 are en-suite and also

has a kitchen, a living room with chimney and direct access to the courtyard. It has the possibility to build a third floor which is currently open plan. The building is away from the road which allows tranquillity and privacy. Can you imagine living here?

Contact us,
we will be happy to assist you,
to offer you more details and information.

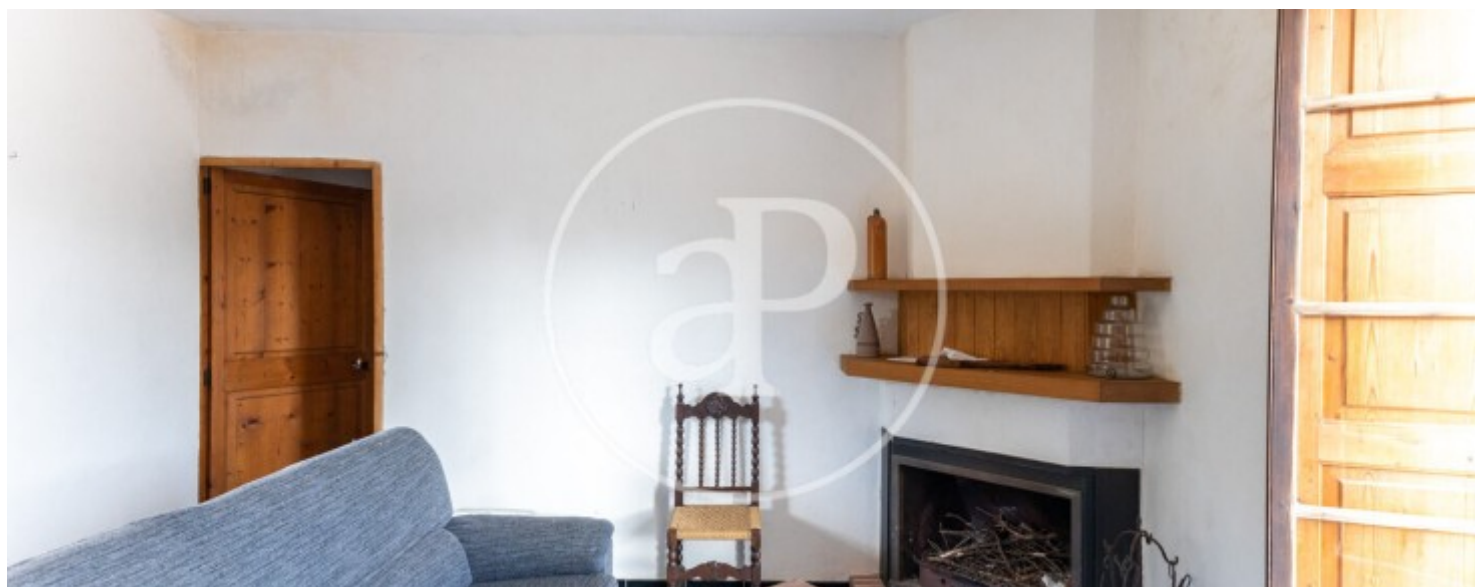
Puigpunyent, Esporles - Puigpunyent - Estellencs - Banyalbufar

REF. VPM2304041



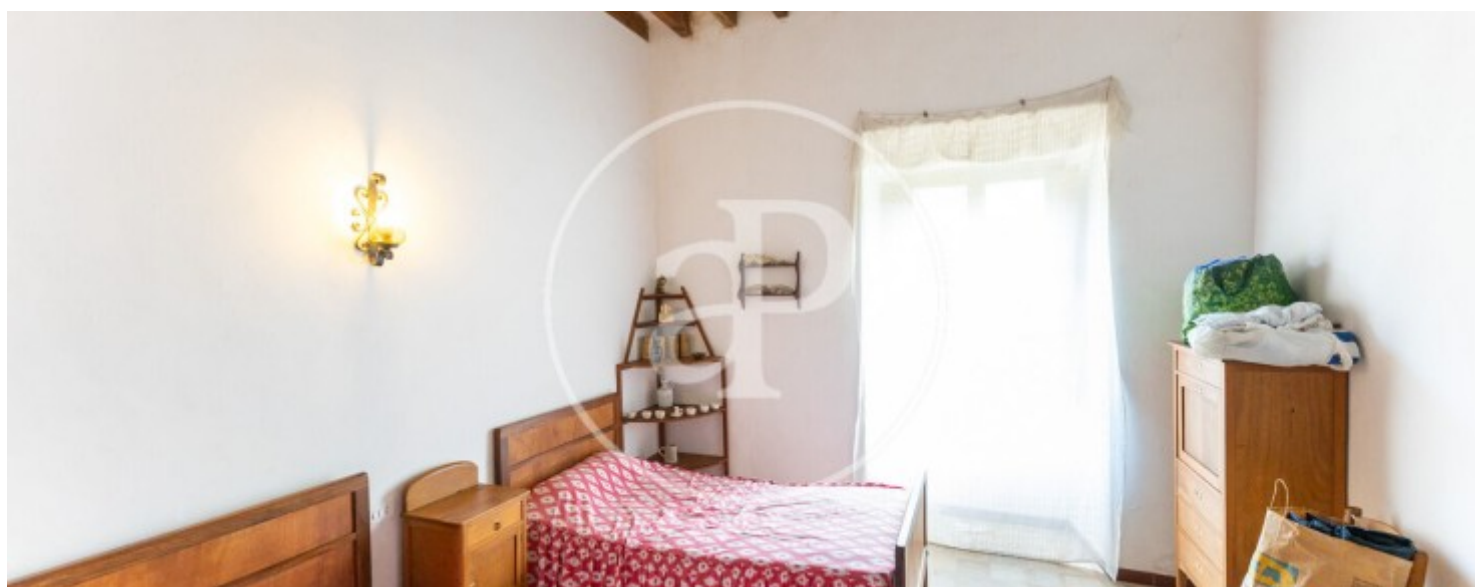
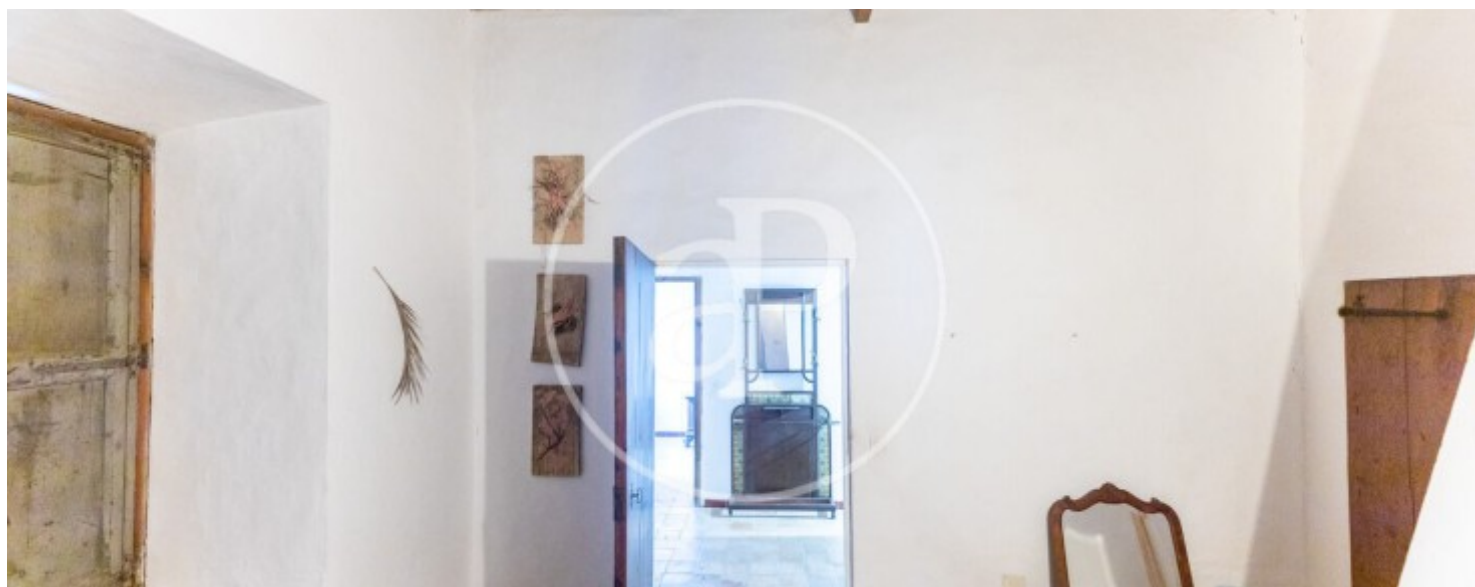
Puigpunyent, Esporles - Puigpunyent - Estellencs - Banyalbufar

REF. VPM2304041



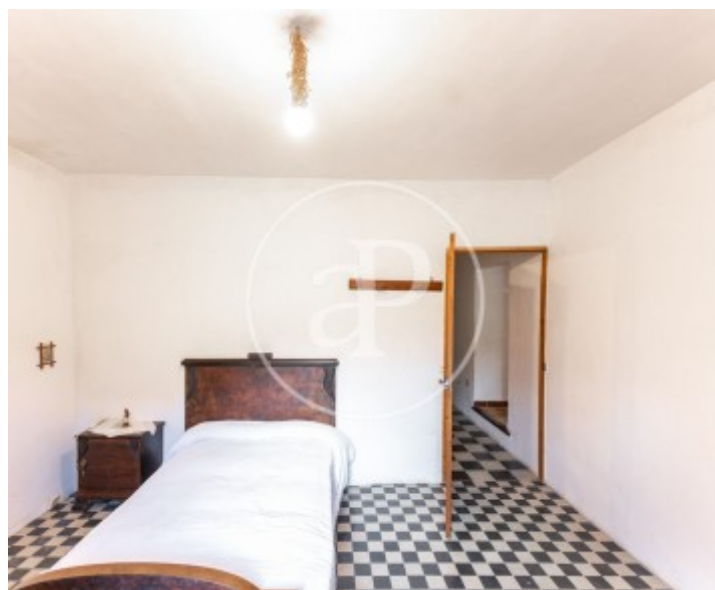
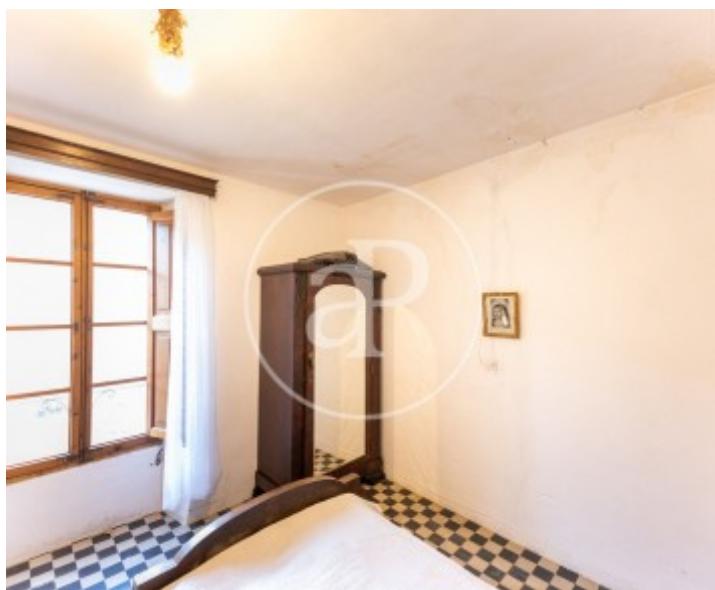
Puigpunyent, Esporles - Puigpunyent - Estellencs - Banyalbufar

REF. VPM2304041



Puigpunyent, Esporles - Puigpunyent - Estellencs - Banyalbufar

REF. VPM2304041



The information about any property is not binding to any offer or contract. Any verbal or written declaration made by aProperties with regards to the value or condition of the property should not be considered accurate or factual. The pictures make reference to some parts of the property at the times that they were taken. The areas, dimensions and distances that are given are approximate and should be checked by the client. The images are computer generated and are just an approximate indication of the real appearance of the property; these may change at any time. The information with regards to the property may also change at any time.

For **more information** or
to make an appointment

apropertiespalma@aproperties.es
Tel: 871 16 01 60
www.aproperties.es