



Es Verger, Esporles - Puigpunyent - Estellencs - Banyalbufar

REF. APM2402024

House for rent in Ses Rotgetes

Features

- ✓ Views
- ✓ Furnished
- ✓ AACC
- ✓ Backyard
- ✓ Has parking
- ✓ Heating
- ✓ Boxroom
- ✓ Terrace
- ✓ Pool

Surface
750 m²

Bedrooms
7

Bathrooms
5

Price
15,000 €



It is a villa that combines luxury, comfort and spectacular views.

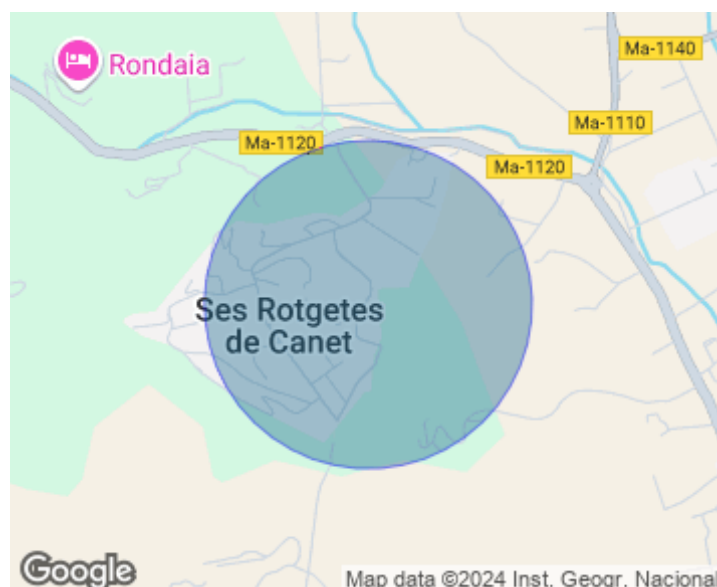
Spread over a plot of 10.000 sqm, it offers a large and beautiful living space. The first floor houses a very spacious and incredibly bright double living room with wooden beamed ceilings and large windows that span one entire side of the house, offering stunning views of the valley. The kitchen is fully equipped with white goods. From the living room there is access to a huge, fully equipped terrace, perfect for enjoying the Mediterranean climate. On the ground floor are the bedrooms. All of them are very spacious and bright. The outdoor space is beautifully landscaped and offers a variety of

amenities, a 15 metre swimming pool, providing options for outdoor entertainment and recreation. The villa is an architectural gem that combines modern elegance with functionality, providing an exceptional home in a stunning setting. Can you imagine living here? We look forward to your call!

Contact us,
we will be happy to assist you,
to offer you more details and information.

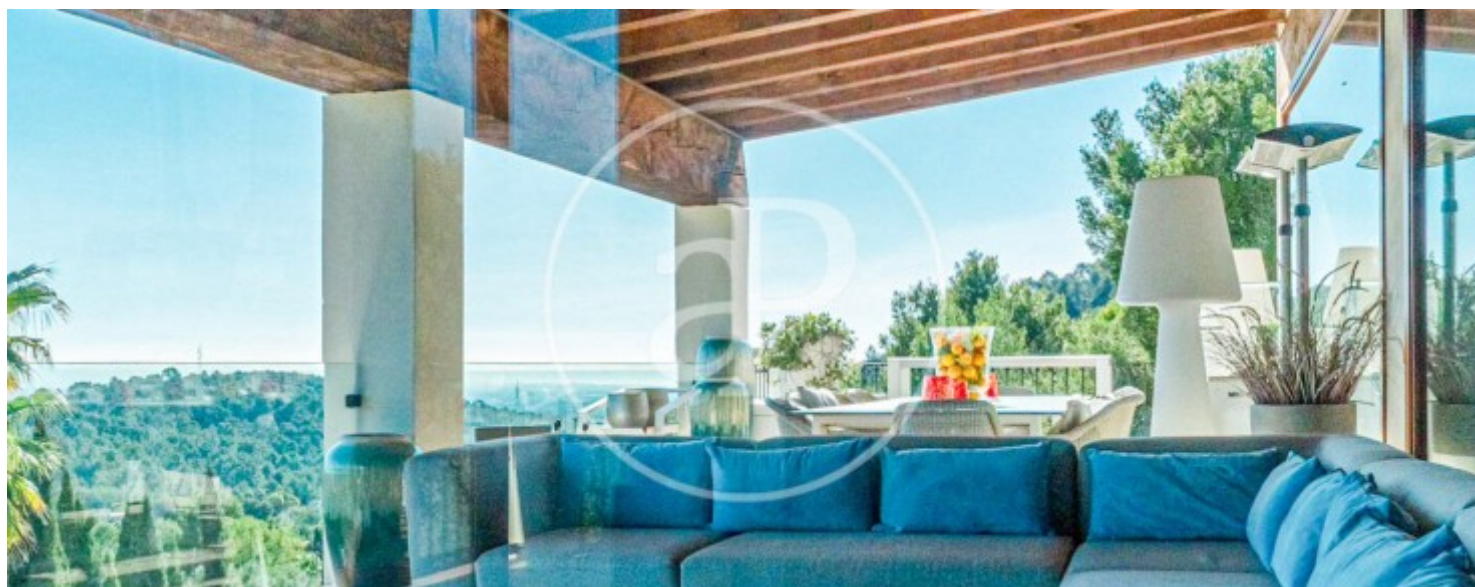
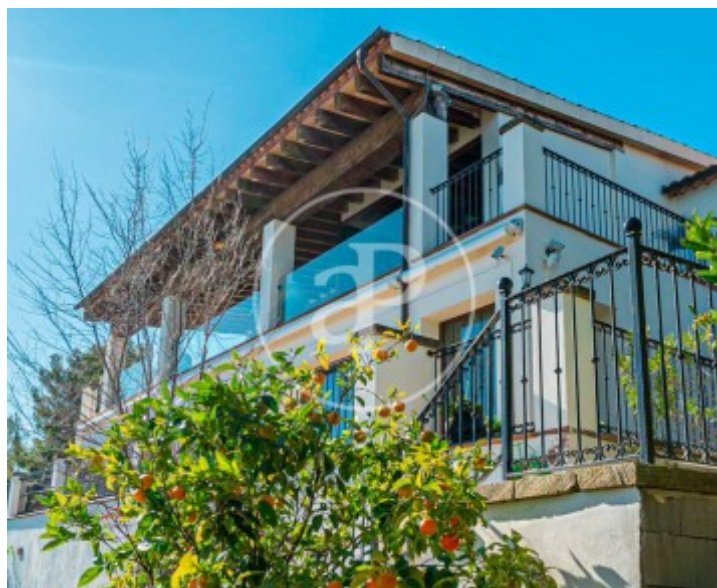
Es Verger, Esporles - Puigpunyent - Estellencs - Banyalbufar

REF. APM2402024



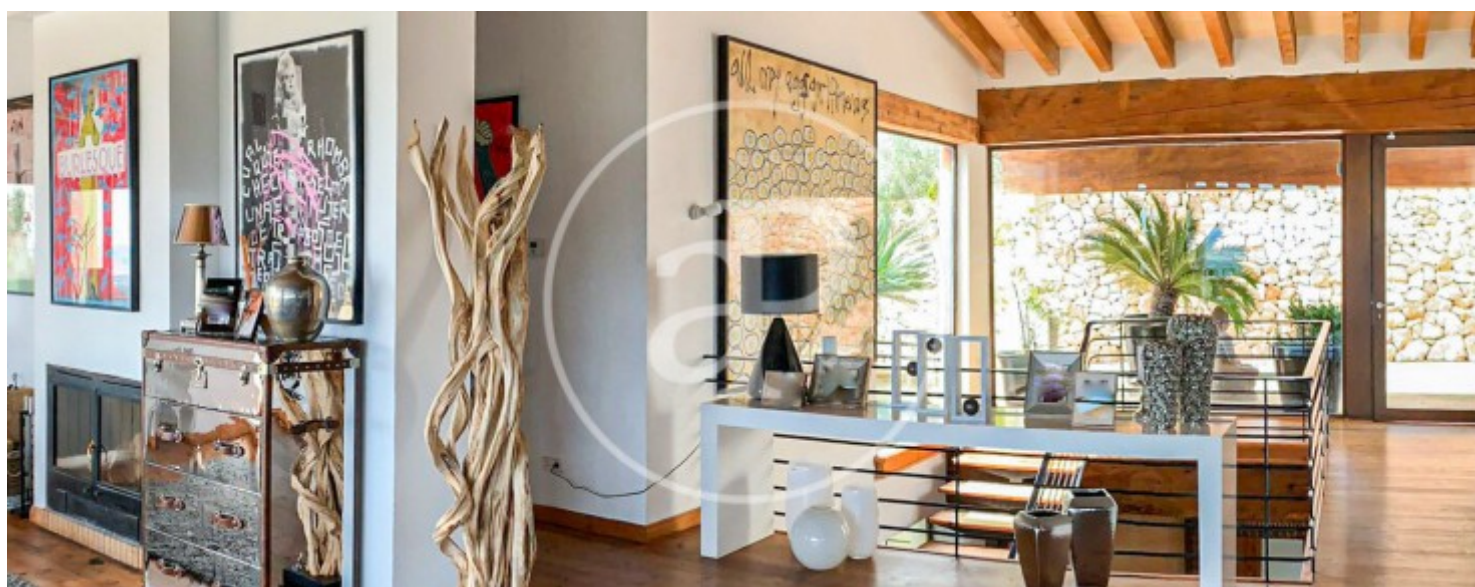
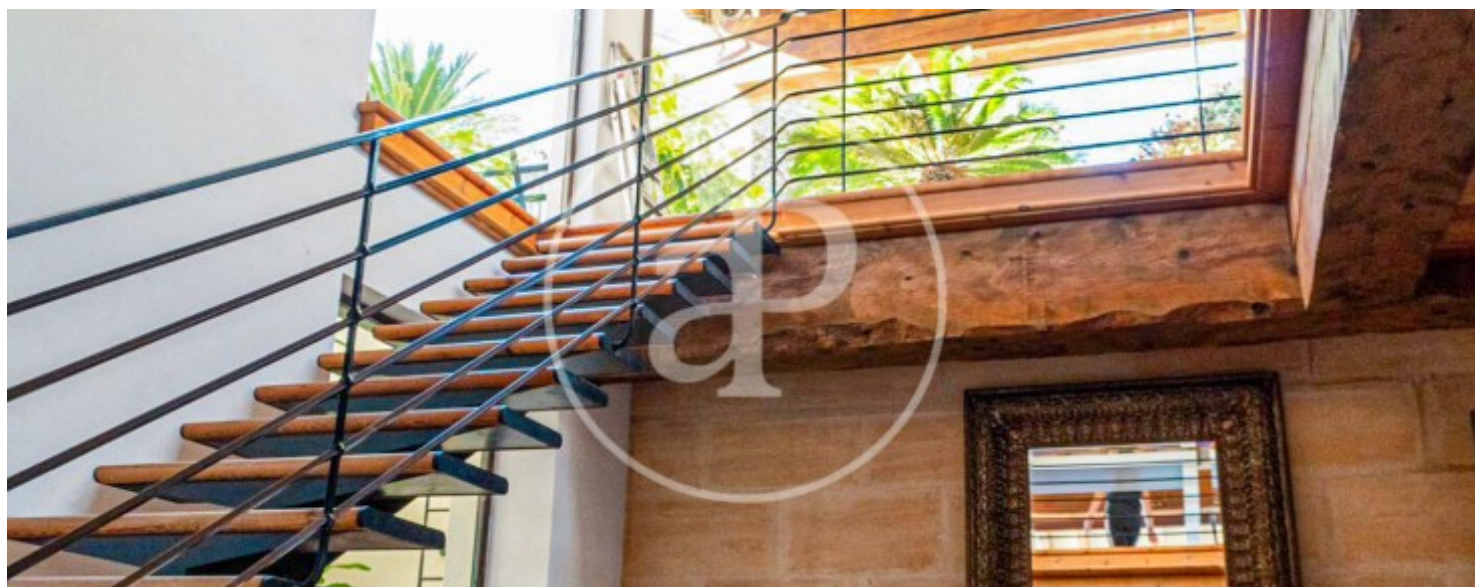
Es Verger, Esporles - Puigpunyent - Estellencs - Banyalbufar

REF. APM2402024



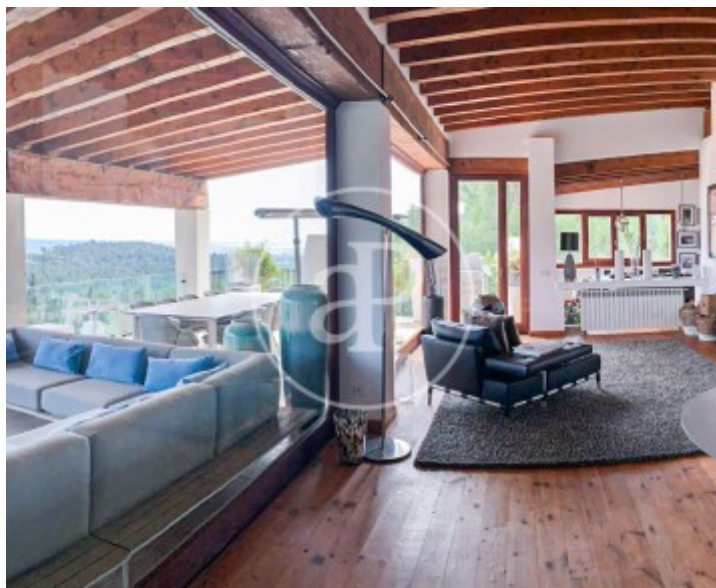
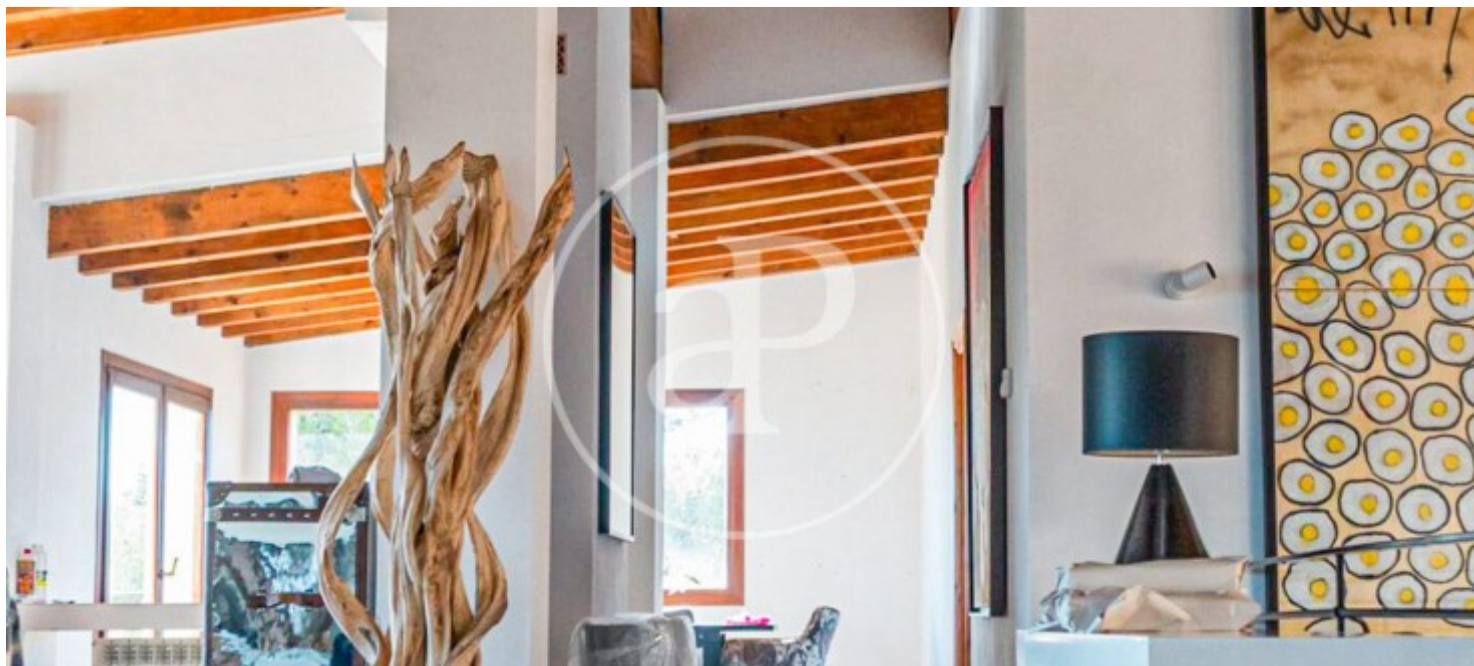
Es Verger, Esporles - Puigpunyent - Estellencs - Banyalbufar

REF. APM2402024



Es Verger, Esporles - Puigpunyent - Estellencs - Banyalbufar

REF. APM2402024



The information about any property is not binding to any offer or contract. Any verbal or written declaration made by aProperties with regards to the value or condition of the property should not be considered accurate or factual. The pictures make reference to some parts of the property at the times that they were taken. The areas, dimensions and distances that are given are approximate and should be checked by the client. The images are computer generated and are just an approximate indication of the real appearance of the property; these may change at any time. The information with regards to the property may also change at any time.

For **more information** or
to make an appointment

apropertiespalma@aproperties.es
Tel: 871 16 01 60
www.aproperties.es