

Esplugues de Llobregat

REF. VB2204023

# Ground floor with terrace and parking in Esplugues de Llobregat

## Features

- ✓ AACC
- ✓ Terrace
- ✓ Backyard
- ✓ Lift
- ✓ Has parking

Surface

**107 m<sup>2</sup>**

Bedrooms

**3**

Bathrooms

**2**

Price

**529,000 €**



## Ground floor of 109 meters with 3 bedrooms and two bathrooms with garden and parking in Esplugues de Llobregat.

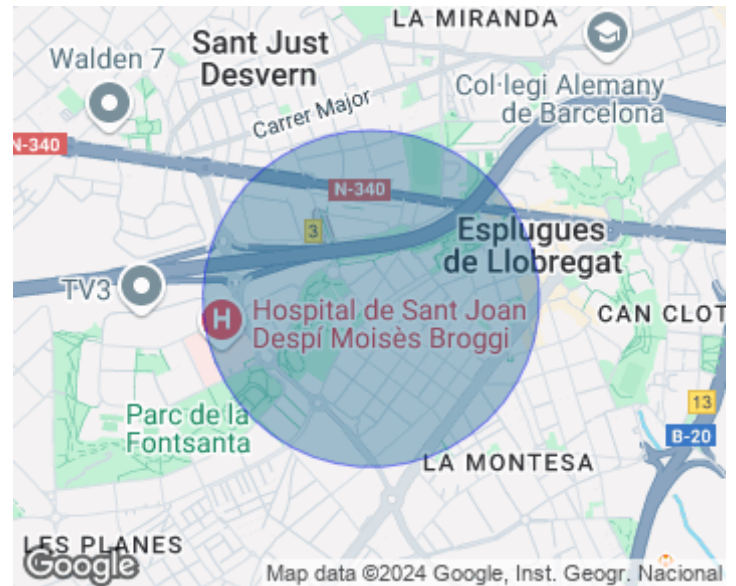
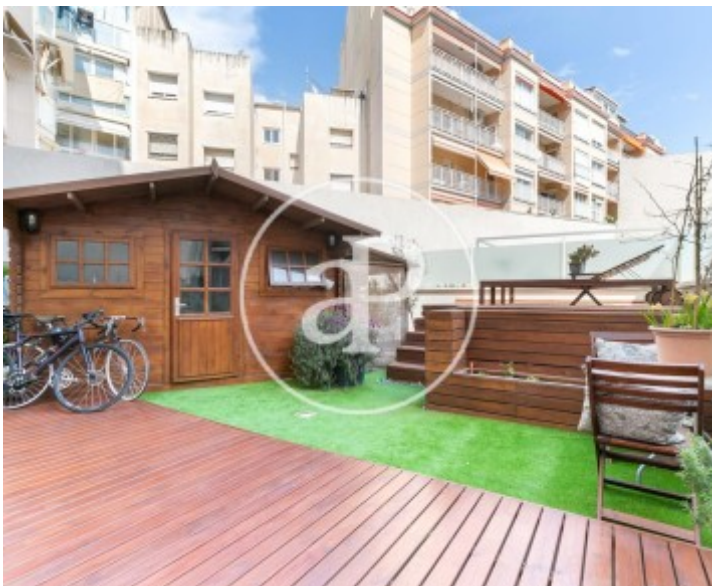
Ground floor in building of 2011, in a very well kept building in Esplugues de Llobregat. This apartment, reminds us of a house for its uniqueness, has three exterior rooms, open kitchen and a garden terrace, which takes us to a quiet and beautiful environment. Despite not being a work of many years, the owners have made improvements to the property incorporating elements of high value, for the materials chosen by and the execution of the work. The result is perfect, a unique and exclusive piece. One of the strong points of the house is the beautiful garden

through which we access from the living room. This garden of delights is a place where you can enjoy with friends. A beautiful wooden pergola protects us from the heat and takes us to an exotic place, the wooden house is the sunny refuge for anyone who wants to feel free and if we want to relax and refresh ourselves, the jacuzzi awaits us. The location is perfect, very close to public transportation and yet a very quiet area. Only 10 minutes from the airport and excellent communication by car and bus. Contact your Aproproperties consultant for more information and viewings.

**Contact us,**  
we will be happy to assist you,  
to offer you more details and information.

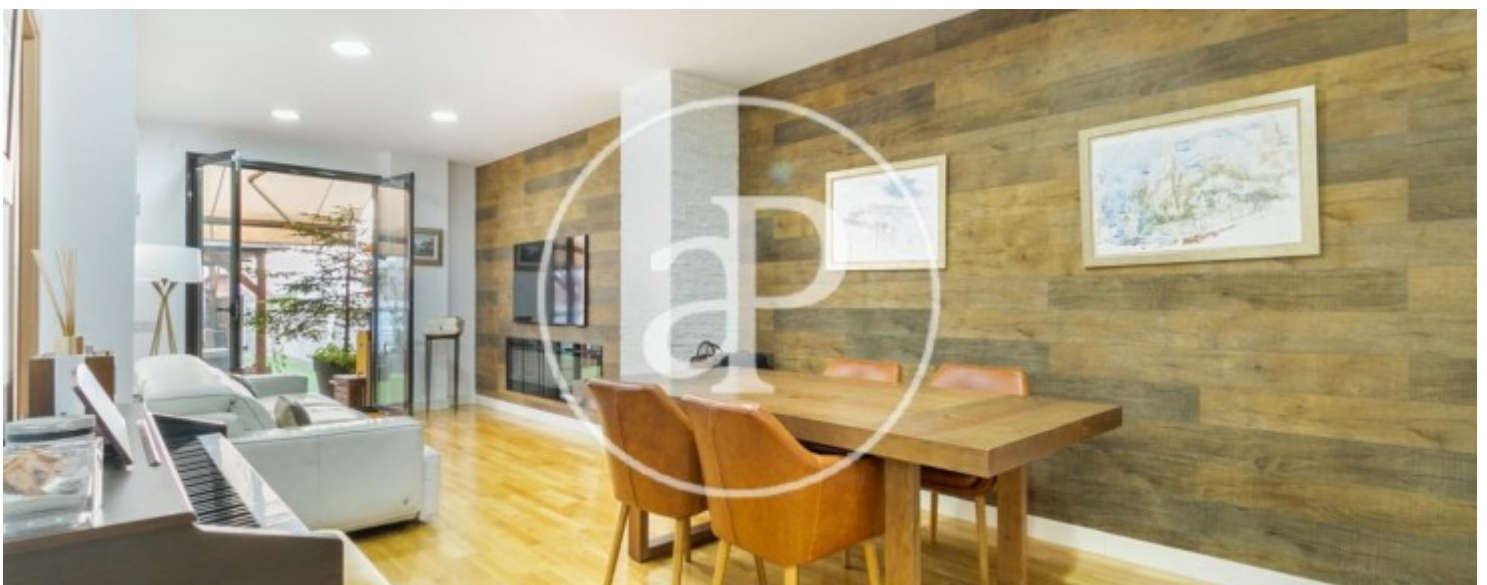
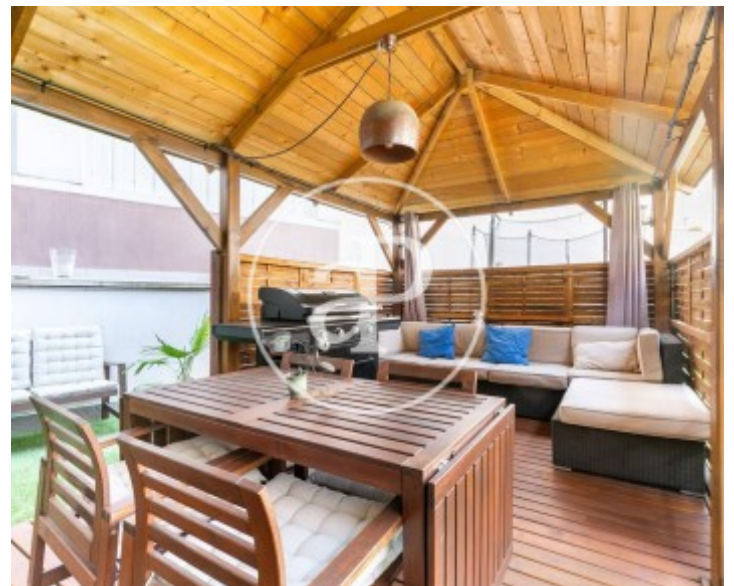
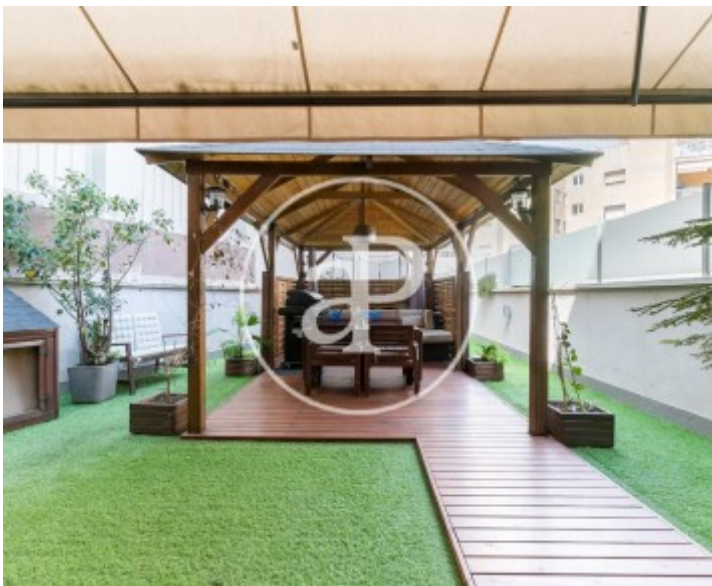
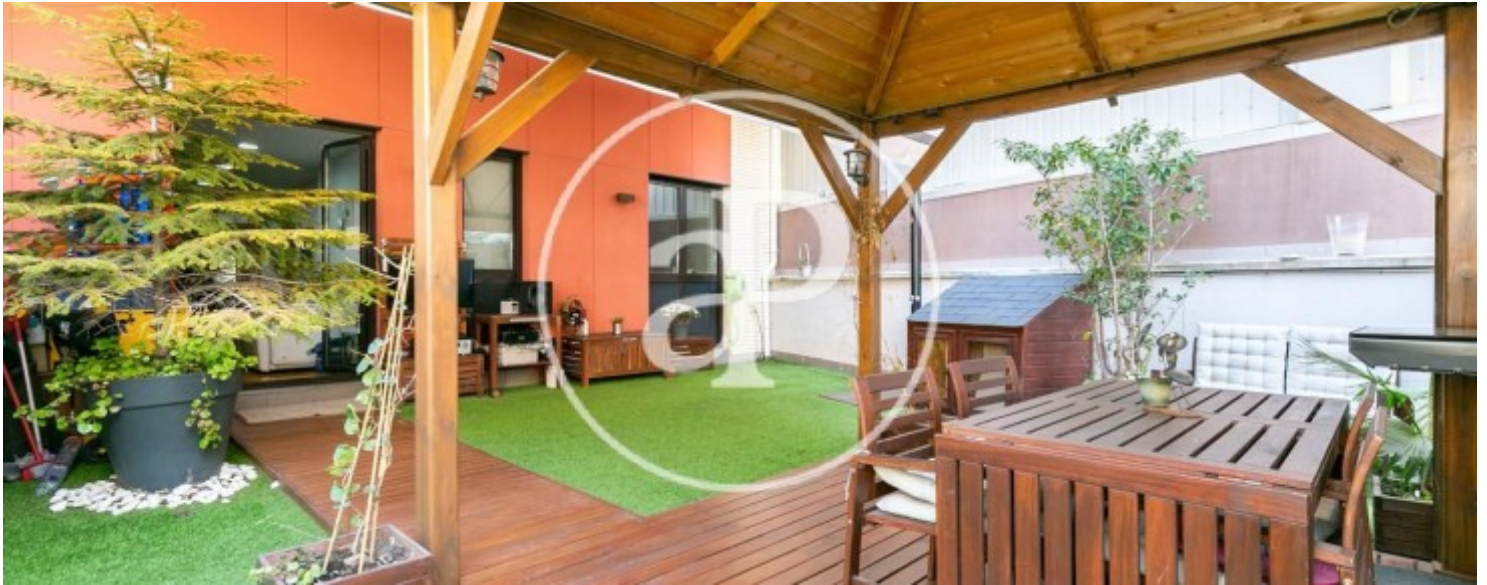
Esplugues de Llobregat

REF. VB2204023



Esplugues de Llobregat

REF. VB2204023



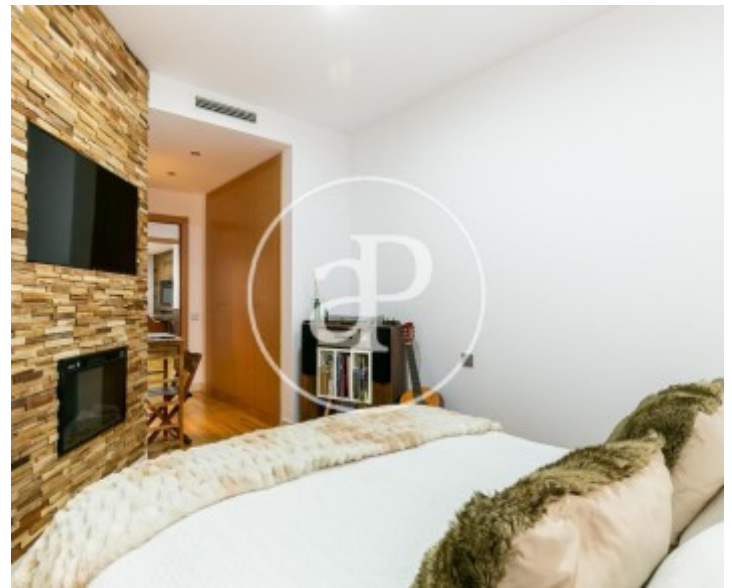
Esplugues de Llobregat

REF. VB2204023



Esplugues de Llobregat

REF. VB2204023



The information about any property is not binding to any offer or contract. Any verbal or written declaration made by aProperties with regards to the value or condition of the property should not be considered accurate or factual. The pictures make reference to some parts of the property at the times that they were taken. The areas, dimensions and distances that are given are approximate and should be checked by the client. The images are computer generated and are just an approximate indication of the real appearance of the property; these may change at any time. The information with regards to the property may also change at any time.

For **more information** or  
to make an appointment

[apropertiesbarcelona@aproperties.es](mailto:apropertiesbarcelona@aproperties.es)  
Tel: 93 528 89 08  
[www.aproperties.es](http://www.aproperties.es)