

(Encamp)

Ref: ONB2307001



Latest new build homes in Vila Park, Encamp

Luxury new development in the heart of Encamp that combines elegance, comfort and quality of life. With its generous spaces, luxury finishes, abundant sunlight, advanced technology and privileged location, it represents an exceptional opportunity for those looking to live in an exclusive and sophisticated environment. It is located just minutes from the Grandvalira ski resort, which can be accessed via the emblematic Funicamp. The apartments have an area of more than 230 m², 3 bedrooms, 3 bathrooms, several storage rooms and parking spaces included in the price. In addition, the apartment offers a very spacious balcony, perfect for enjoying the views and relaxing outdoors. The spacious main living room is a bright and welcoming space, with large windows that let in plenty of sunlight and offer panoramic views of the surroundings. Adjacent to the living room is a spectacular kitchen with a central cooking island. The kitchen is fully equipped with state-of-the-art appliances, which will delight lovers of gastronomy and high-end cuisine. The apartment has three spacious and well distributed bedrooms. One of them is an impressive master suite, offering privacy and comfort. The other t [...]

Encamp

Unit 2 1

Completion Q2 2023

FEATURES

Surface 233 m² / 7 m² terrace

3 Rooms

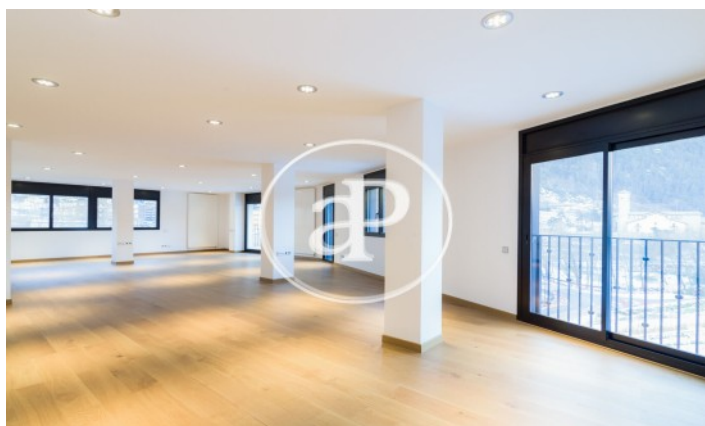
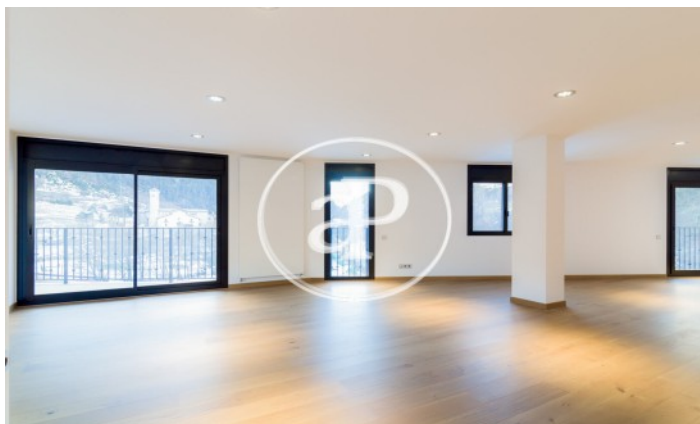
3 Toilets

- ✓ Views
- ✓ Heating
- ✓ Boxroom
- ✓ Backyard
- ✓ Lift
- ✓ Concierge
- ✓ Has parking

Price 1,350,000 €

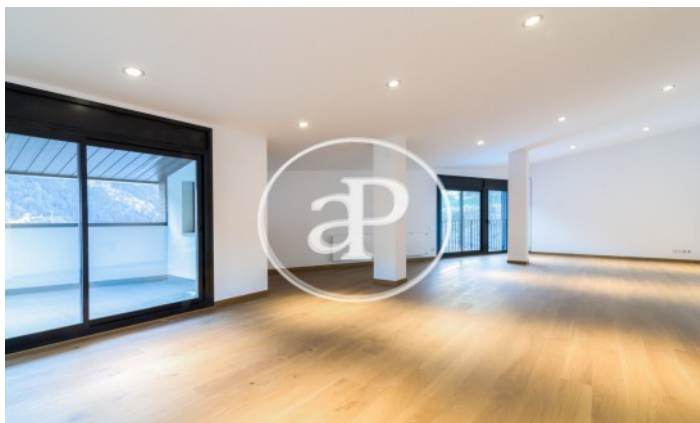
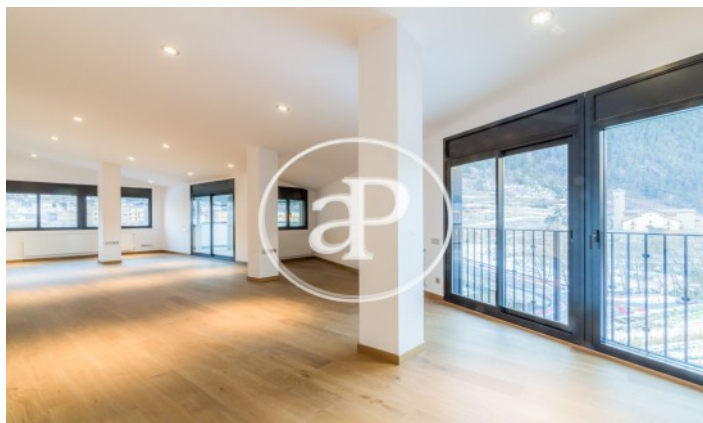
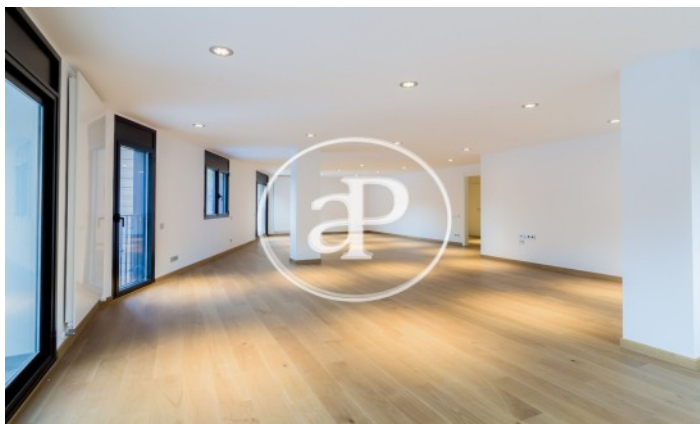
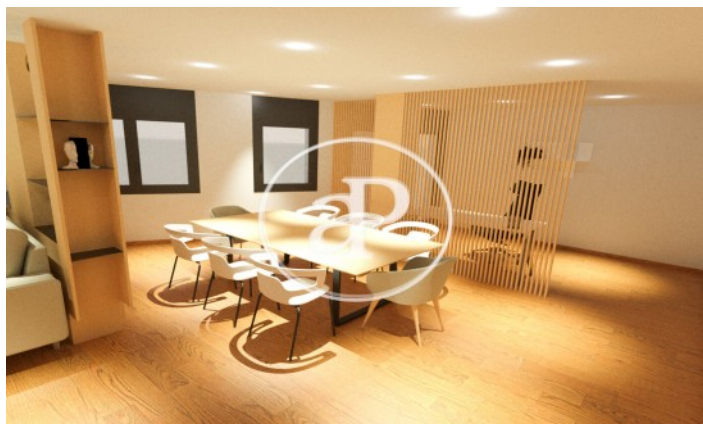
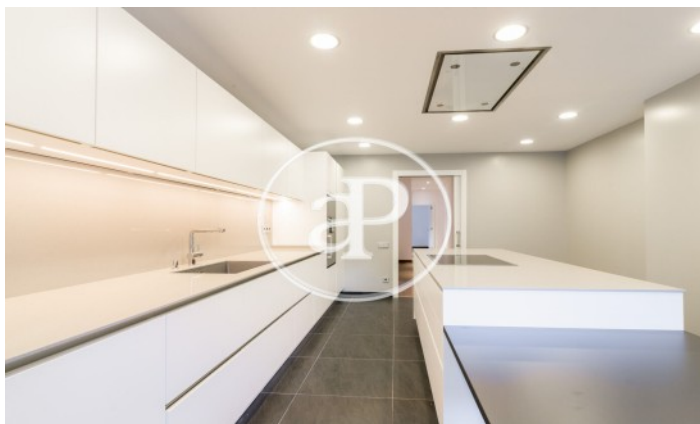
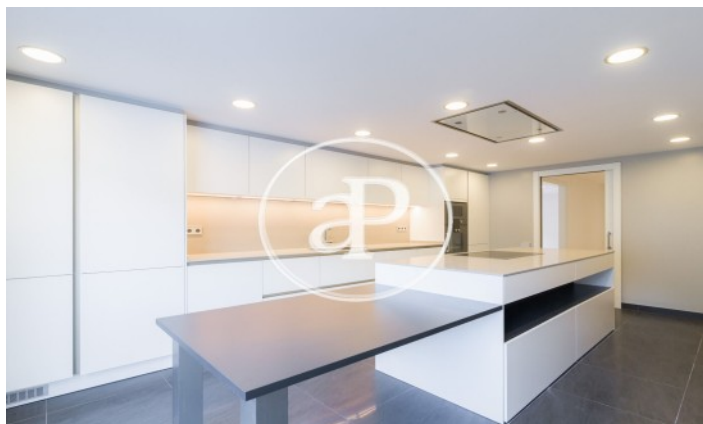
(Encamp)

Ref: ONB2307001



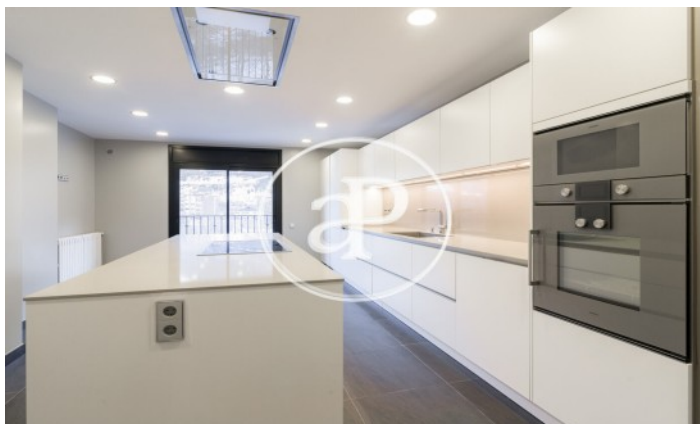
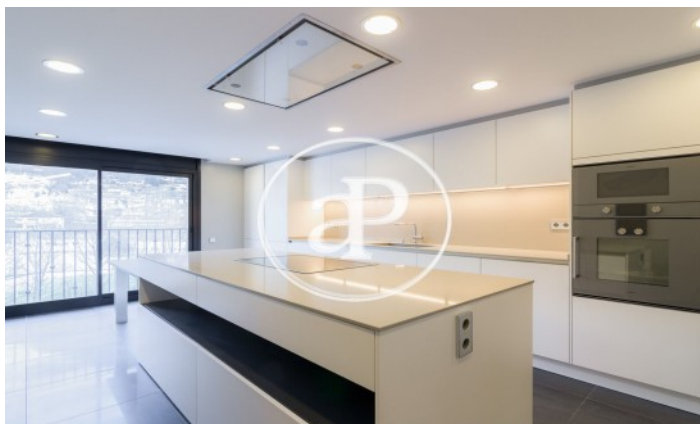
(Encamp)

Ref: ONB2307001



(Encamp)

Ref: ONB2307001



The information about any property is not binding to any offer or contract. Any verbal or written declaration made by aProperties with regards to the value or condition of the property should not be considered accurate or factual. The pictures make reference to some parts of the property at the times that they were taken. The areas, dimensions and distances that are given are approximate and should be checked by the client. The images are computer generated and are just an approximate indication of the real appearance of the property; these may change at any time. The information with regards to the property may also change at any time.

Contact us today for more information or to arrange a viewing

Tel: 93 528 89 08

apropertiesbarcelona@aproperties.es

<https://www.aproperties.es>