



(Marina Botafoc - Talamanca)

Ref: ONB2205002



New apartments with terrace for sale in Marina Botafoc - Talamanca (Eivissa)

Sarana Ibiza is a unique residential complex of 6 flats and a penthouse located in the most distinguished and privileged area of the island of Ibiza, on the front line of the seafront promenade, opposite the Marina Port and just a few minutes from Talamanca Beach. It offers the best views of the beautiful historic centre of the city and the marina of La Marina Ibiza, where those who live in this luxury complex with sea views can moor their boats or enjoy some of the most sophisticated establishments in Ibiza, with the sole objective of achieving the maximum wellbeing and enjoyment of everything that surrounds them. Designed by the prestigious French architecture studio Moatti-Riviere, Sarana Ibiza is a project where design becomes art, thanks to the hand of the renowned architect Alain Moatti, who has managed to capture the special light that characterises this Mediterranean island through the spectacular façade, together with its striking overhangs. The interior design has prioritised the versatility of the spaces to provide maximum comfort and wellbeing for its inhabitants, with the sole objective of enjoying the tranquillity and harmony in all the rooms every [...]

Eivissa / Marina Botafoc - Talamanca

Unit 4

Completion Q2 2022

FEATURES

Surface 612 m² / 363 m² terrace

3 Rooms

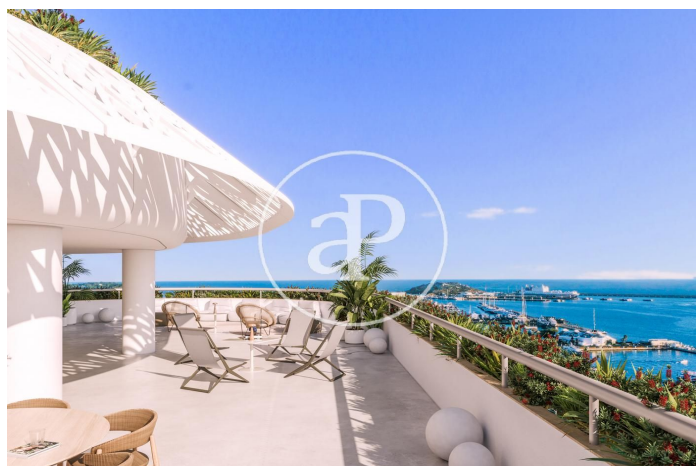
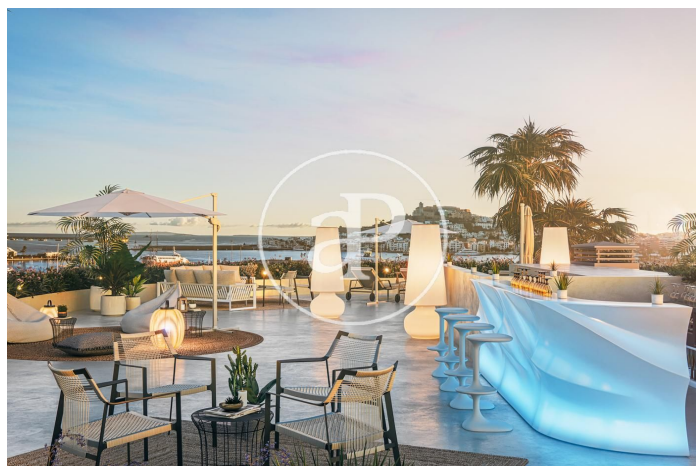
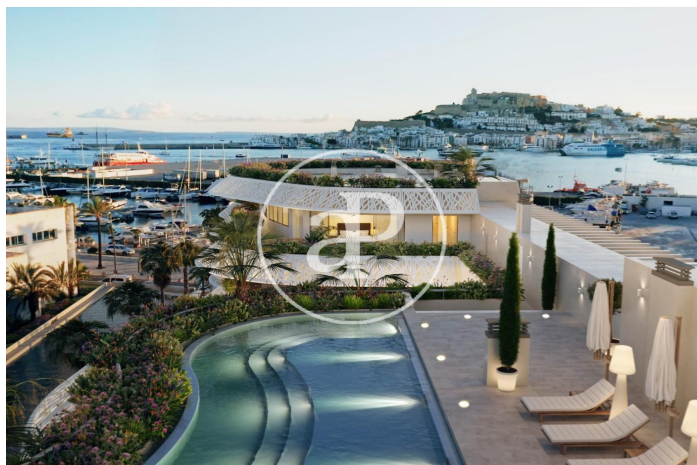
3 Toilets 1 Restrooms

- ✓ Views
- ✓ Heating
- ✓ AACC
- ✓ Terrace
- ✓ Pool
- ✓ Lift
- ✓ Has parking

PRICE UPON REQUEST

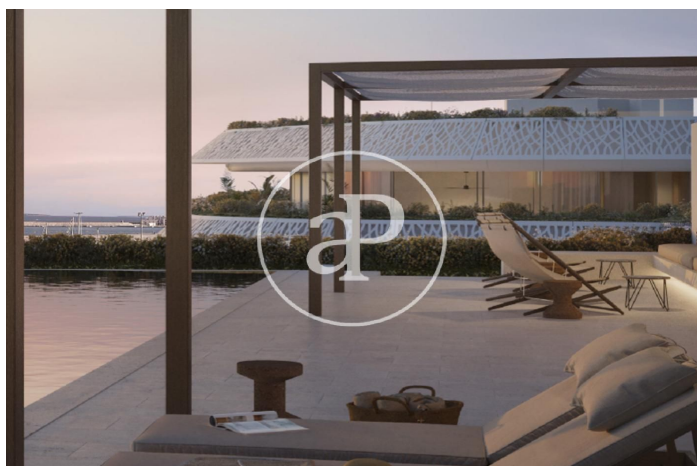
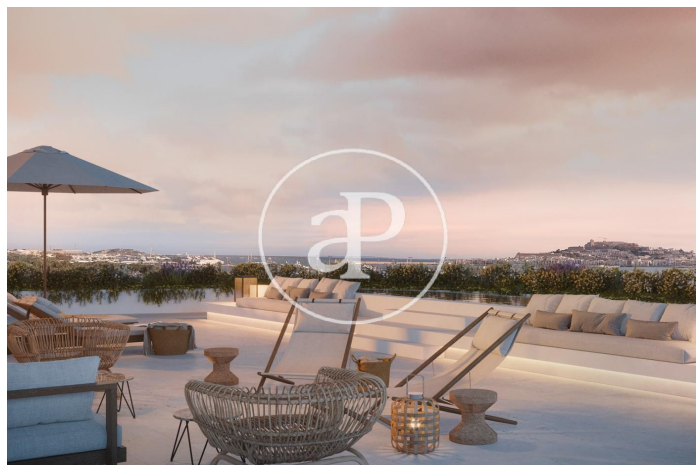
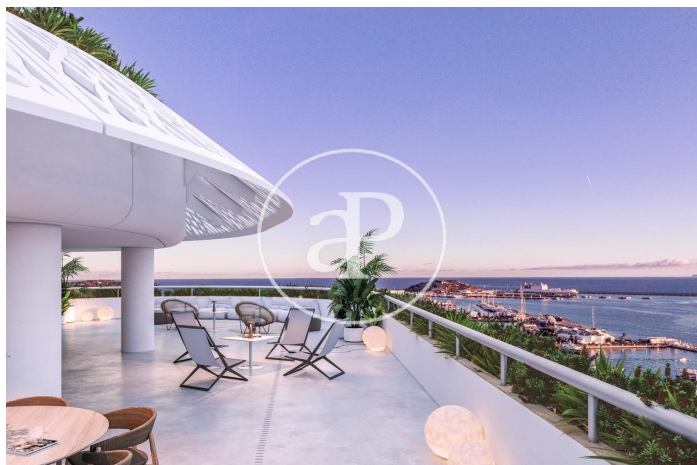
(Marina Botafoch - Talamanca)

Ref: ONB2205002



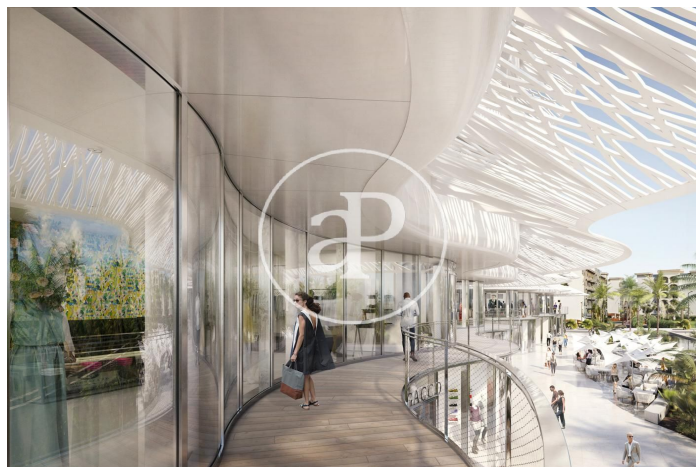
(Marina Botafoch - Talamanca)

Ref: ONB2205002



(Marina Botafoch - Talamanca)

Ref: ONB2205002



The information about any property is not binding to any offer or contract. Any verbal or written declaration made by aProperties with regards to the value or condition of the property should not be considered accurate or factual. The pictures make reference to some parts of the property at the times that they were taken. The areas, dimensions and distances that are given are approximate and should be checked by the client. The images are computer generated and are just an approximate indication of the real appearance of the property; these may change at any time. The information with regards to the property may also change at any time.

Contact us today for more information or to arrange a viewing

Tel: 871 16 01 60 apropertiespalma@aproperties.es <https://www.aproperties.es>