

Palmanyola, Deià - Bunyola

REF. VPM2211008

House for sale in Sa Coma

Features

- ✓ Views
- ✓ Boxroom
- ✓ Terrace
- ✓ Pool
- ✓ Has parking
- ✓ Heating
- ✓ AACC
- ✓ Backyard
- ✓ Gym

Surface

620 m²

Bedrooms

8

Bathrooms

6



Price

1,750,000 €

This house has all the comforts of an 8 bedroom property you can imagine, which makes it more convenient and easy to live in, as it has 4 bedrooms on its well distributed ground floor.

All the rooms in this property are very spacious, with exterior access to natural light throughout the day and finished with top quality materials. This property is also adapted for people with reduced mobility. Its gardens are wonderful where to relax and enjoy the peace and tranquillity that it offers in a plot of approximately 3.400 sqm. The exterior also has a porch with barbecue, own swimming pool, games room, basketball court, garden shed, basement of approx. 120 m² and

high ceilings, which can be converted into a large gym and sauna space. Also garage, water deposit of 85.000 litres and automatic irrigation. This cleverly designed property provides privacy and space, high energy efficiency, also due to its south orientation with views to Palma and Mountains. Sa Coma is very well communicated with both Sóller and Palma in approx. 15 minutes by car. Can you imagine living here?

Contact us,
we will be happy to assist you,
to offer you more details and information.

Palmanyola, Deià - Bunyola

REF. VPM2211008



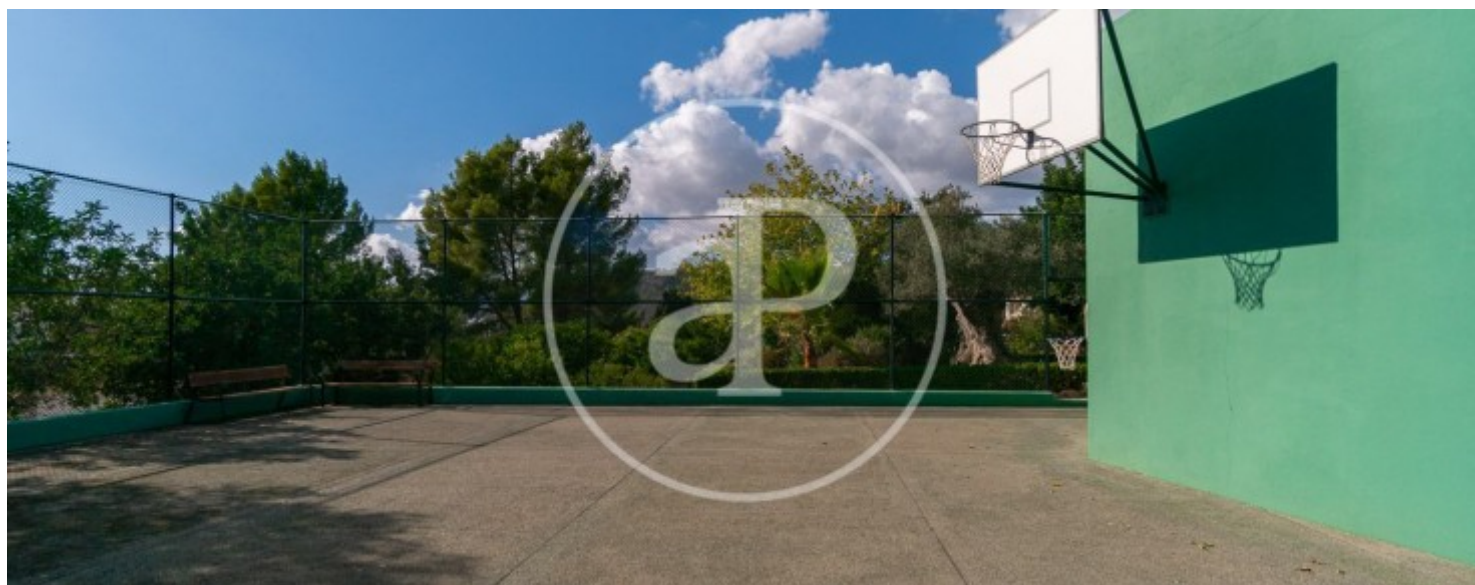
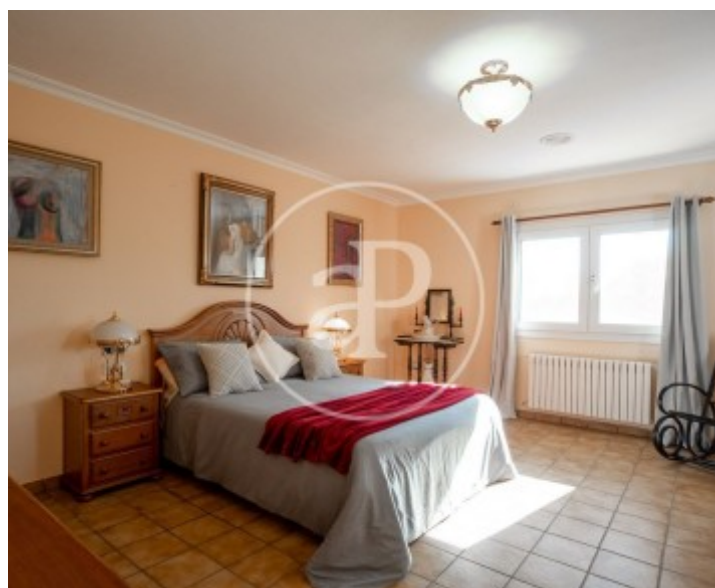
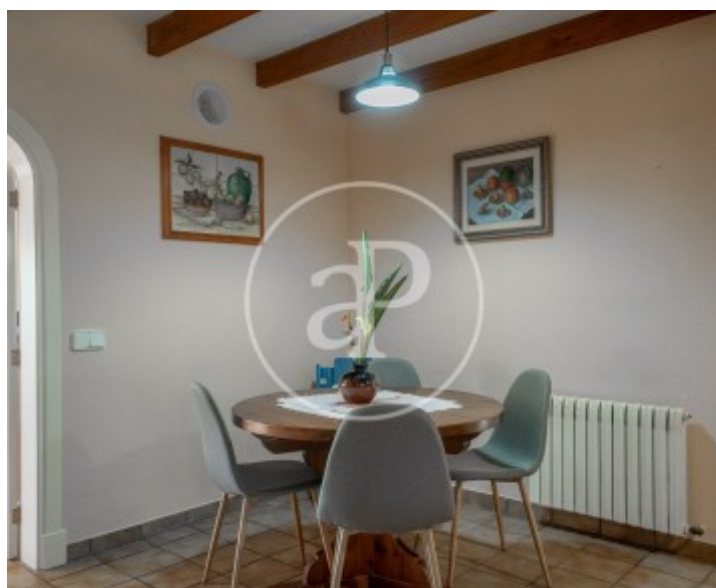
Palmanyola, Deià - Bunyola

REF. VPM2211008



Palmanyola, Deià - Bunyola

REF. VPM2211008



Palmanyola, Deià - Bunyola

REF. VPM2211008



The information about any property is not binding to any offer or contract. Any verbal or written declaration made by aProperties with regards to the value or condition of the property should not be considered accurate or factual. The pictures make reference to some parts of the property at the times that they were taken. The areas, dimensions and distances that are given are approximate and should be checked by the client. The images are computer generated and are just an approximate indication of the real appearance of the property; these may change at any time. The information with regards to the property may also change at any time.

For **more information** or
to make an appointment

apropertiespalma@aproperties.es
Tel: 871 16 01 60
www.aproperties.es