

Palmanyola, Deià - Bunyola

REF. VPM2603022

# Chalet for Sale in Palmanyola

## Features

- ✓ Heating
- ✓ Terrace
- ✓ Pool
- ✓ AACC
- ✓ Backyard
- ✓ Has parking

Price  
**865,000 €**

Surface  
**200 m<sup>2</sup>**

Bedrooms  
**4**

Bathrooms  
**2**



**Magnificent chalet located in Palmanyola, a quiet residential area belonging to the municipality of Bunyola, just a few minutes from Palma de Mallorca.**

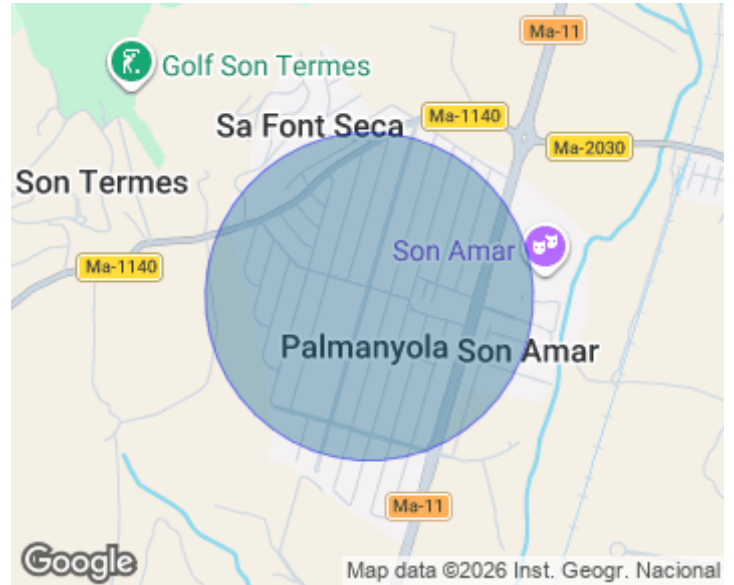
An ideal location for those seeking tranquility, nature and good connections to the city. The property sits on a plot of 865 m<sup>2</sup> and features a detached house of approximately 200 m<sup>2</sup> built, offering great potential and many possibilities for renovation. The home is distributed mainly on one ground floor, with an additional bedroom/office on the first floor. The house includes air conditioning and a fireplace, providing comfort throughout the year. The exterior is one of the property's greatest

highlights. The house is surrounded by a 360° private garden, offering privacy and multiple areas to enjoy outdoor living. The plot features fruit trees such as lemon trees, a barbecue area, a private swimming pool, and generous spaces ideal for relaxing or hosting family gatherings. Additionally, the property includes a carport, a workshop (former garage) and a basement, providing convenience and ample parking space within the plot. The house requires a full interior renovation, which represents an excellent opportunity to design and personalize the home entirely to the new owner's...

**Contact us,**  
we will be happy to assist you,  
to offer you more details and information.

Palmanyola, Deià - Bunyola

REF. VPM2603022



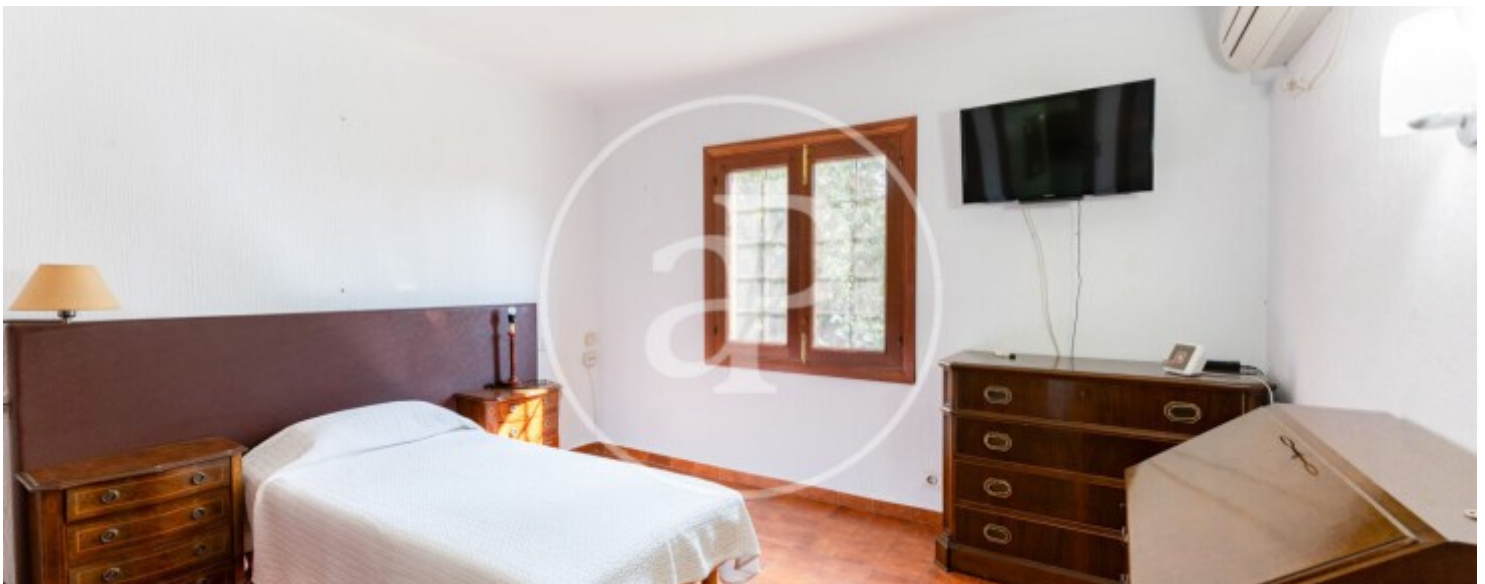
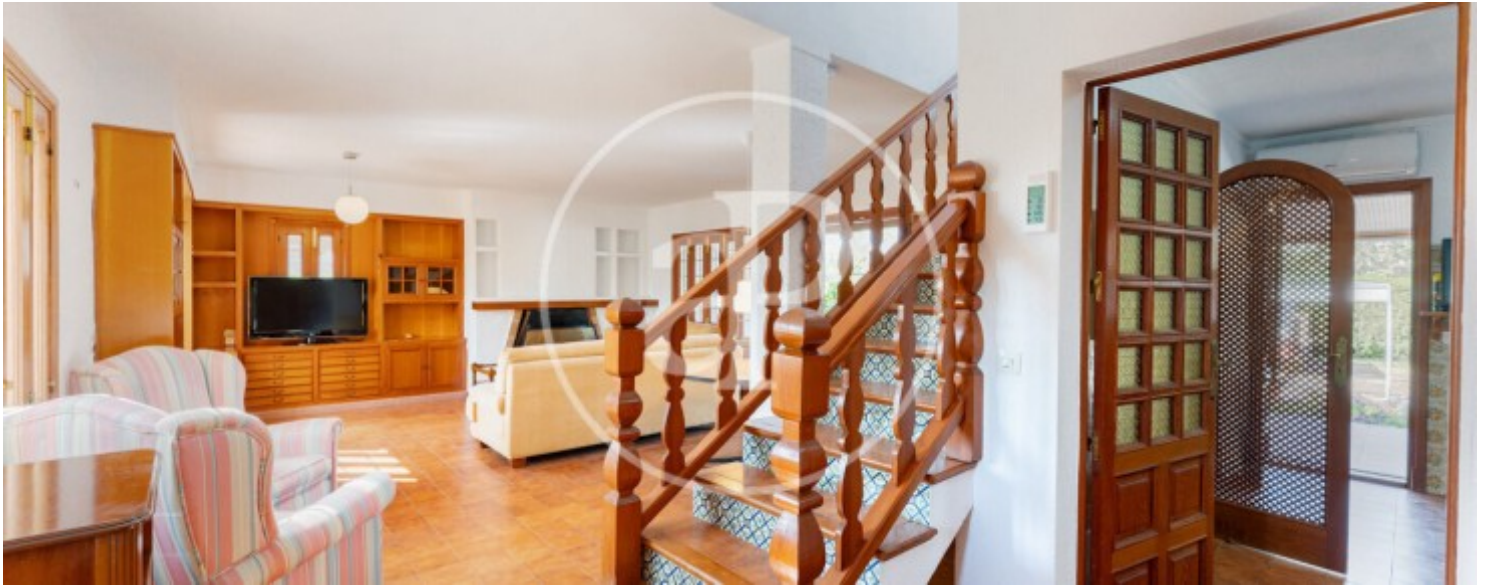
Palmanyola, Deià - Bunyola

REF. VPM2603022



Palmanyola, Deià - Bunyola

REF. VPM2603022



Palmanyola, Deià - Bunyola

REF. VPM2603022



The information about any property is not binding to any offer or contract. Any verbal or written declaration made by aProperties with regards to the value or condition of the property should not be considered accurate or factual. The pictures make reference to some parts of the property at the times that they were taken. The areas, dimensions and distances that are given are approximate and should be checked by the client. The images are computer generated and are just an approximate indication of the real appearance of the property; these may change at any time. The information with regards to the property may also change at any time.

For **more information** or  
to make an appointment

[apropertiespalma@aproperties.es](mailto:apropertiespalma@aproperties.es)  
Tel: 871 16 01 60  
[www.aproperties.es](http://www.aproperties.es)