

Palmanyola, Deià - Bunyola

REF. VPM2502025

Apartment for sale in Palmanyola

Features

- ✓ Views
- ✓ Heating
- ✓ Furnished
- ✓ Boxroom
- ✓ AACC
- ✓ Terrace
- ✓ Has parking

Surface

138 m²

Bedrooms

3

Bathrooms

2



Price

520,000 €

Aproperties exclusively presents one of the only apartments in Palmanyola.

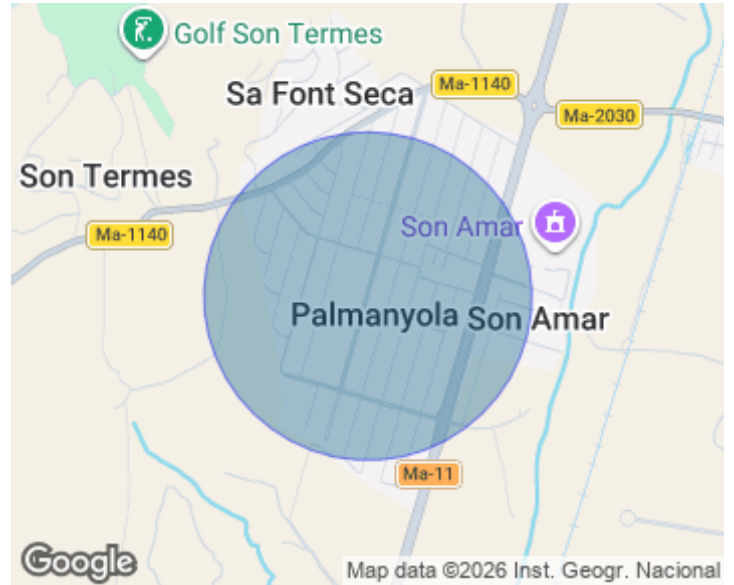
This spacious apartment with 3 bedrooms, 2 bathrooms, modern kitchen with dining area, large living / dining room, laundry room, in excellent condition, ideal for those seeking comfort and tranquility. The apartment is on the second floor without elevator. This charming apartment offers views to the majestic Tramuntana mountain and is oriented to a beautiful green area, perfect to enjoy nature and sports. This property has a parking space in the building (included in the price), which adds extra comfort to your day to day life. Although very quiet and private, this property is within 1min

walking distance to all bars, restaurants, pharmacy, supermarket and the main square of the village church. The benefits of living in Palmanyola are innumerable. Its privileged location allows you to enjoy the peace of the countryside, while the vibrant city of Palma is only a 12 minute drive away, offering you access to a rich cultural life, first class restaurants and beautiful beaches. In addition, the proximity to the Tramuntana mountain range gives you the opportunity to explore nature trails, perfect for romantic walks or bike rides. Having within a 15min drive to the villages and towns...

Contact us,
we will be happy to assist you,
to offer you more details and information.

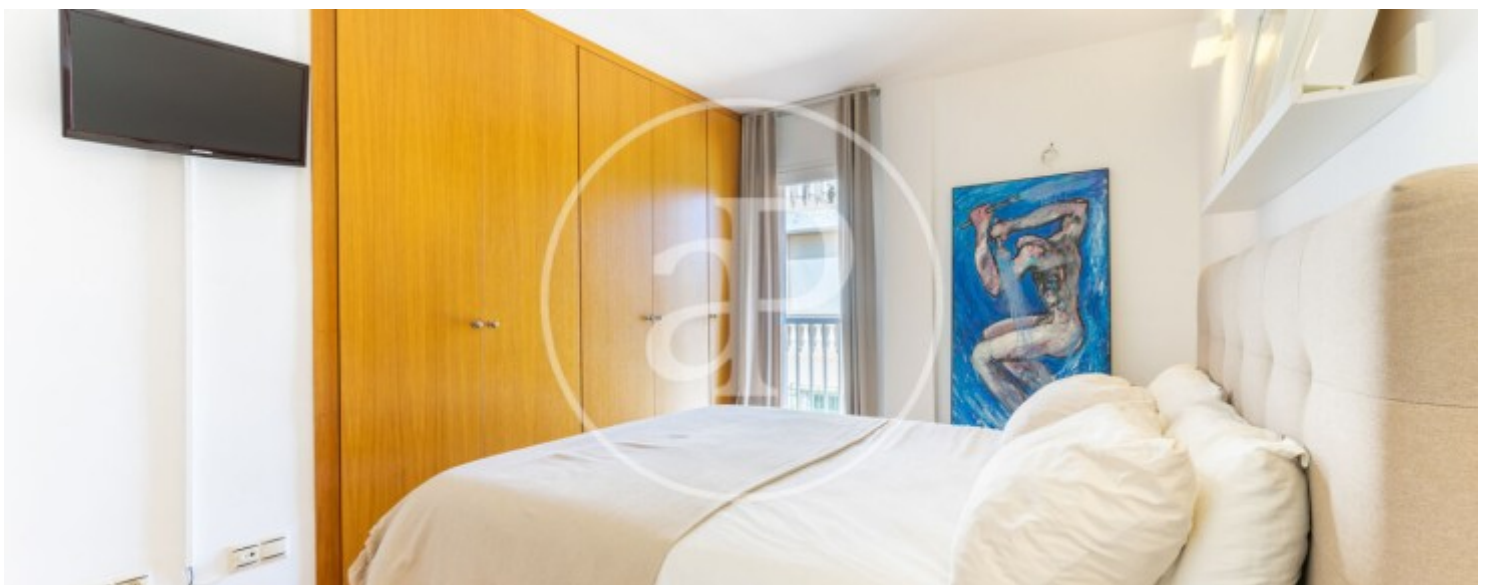
Palmanyola, Deià - Bunyola

REF. VPM2502025



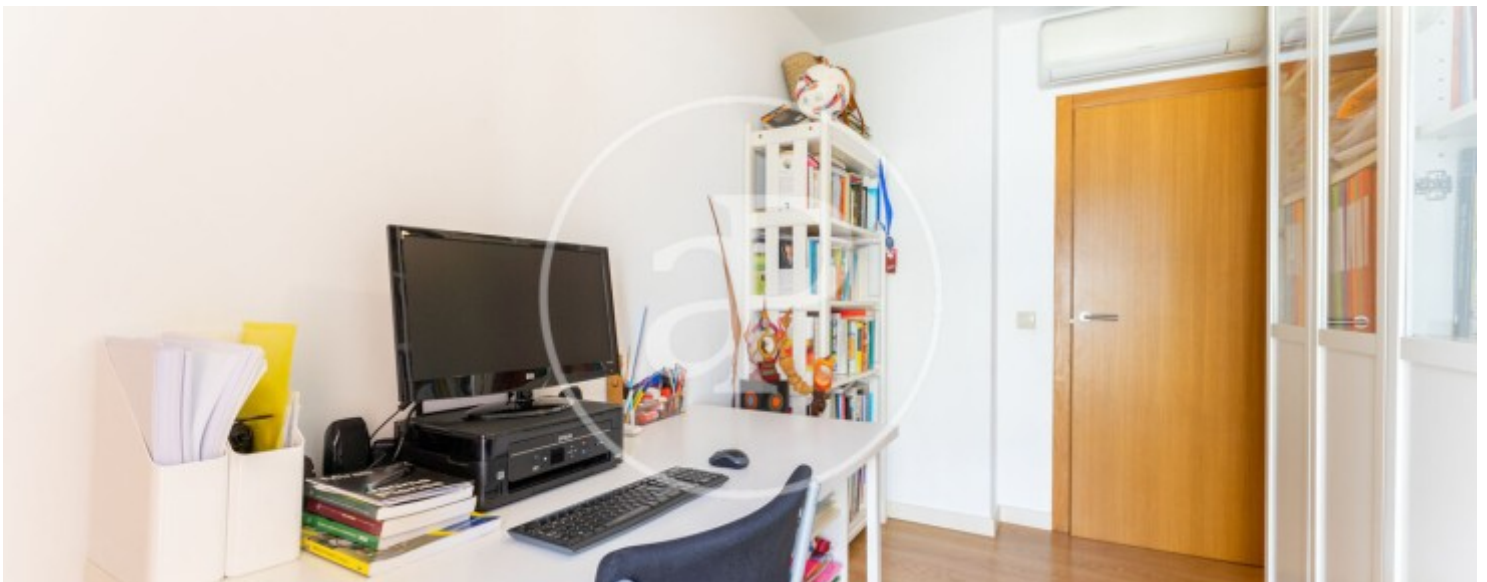
Palmanyola, Deià - Bunyola

REF. VPM2502025



Palmanyola, Deià - Bunyola

REF. VPM2502025



Palmanyola, Deià - Bunyola

REF. VPM2502025



The information about any property is not binding to any offer or contract. Any verbal or written declaration made by aProperties with regards to the value or condition of the property should not be considered accurate or factual. The pictures make reference to some parts of the property at the times that they were taken. The areas, dimensions and distances that are given are approximate and should be checked by the client. The images are computer generated and are just an approximate indication of the real appearance of the property; these may change at any time. The information with regards to the property may also change at any time.

For **more information** or
to make an appointment

apropertiespalma@aproperties.es
Tel: 871 16 01 60
www.aproperties.es