

Bunyola, Deià - Bunyola

REF. VPM2211025



Very well kept finca for sale with twelve hectares of land in Bunyola

Features

- ✓ Views
- ✓ Furnished
- ✓ AACC
- ✓ Backyard
- ✓ Has parking
- ✓ Heating
- ✓ Boxroom
- ✓ Terrace
- ✓ Pool

Price

6,950,000 €

Surface
1,000 m²

Plot surface
136,581 m²

Bedrooms

6

Bathrooms

10



This majestic finca, with spectacular views of the Tramontana mountains, is located in the municipality of Bunyola, in the area of Orient, close to Soller and 10km from the golf course of Son Termes.

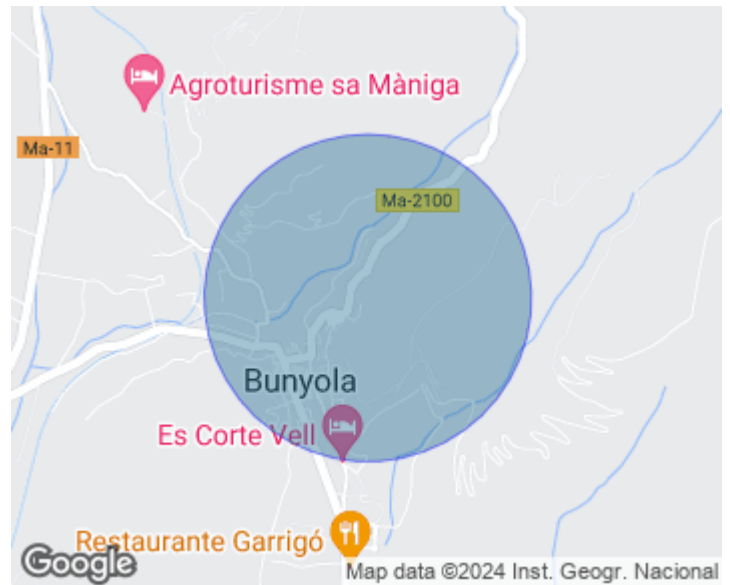
The main house is accessed through beautiful gardens with trees and local vegetation. The entrance hall gives access to two large living rooms, one of them with fireplace, library, separate dining room and large kitchen with breakfast area. All the rooms are exterior with access to a porch that surrounds the house forming a landscaped cloister. The double height entrance has a staircase leading to the upper floor where the bedrooms are located with en suite bathrooms and

a terrace with views of the mountains. The pool area is reached via a path surrounded by centenary olive trees where you can enjoy a porch and a solarium. In addition, there is a separate guest house. Can you imagine living here?

Contact us,
we will be happy to assist you,
to offer you more details and information.

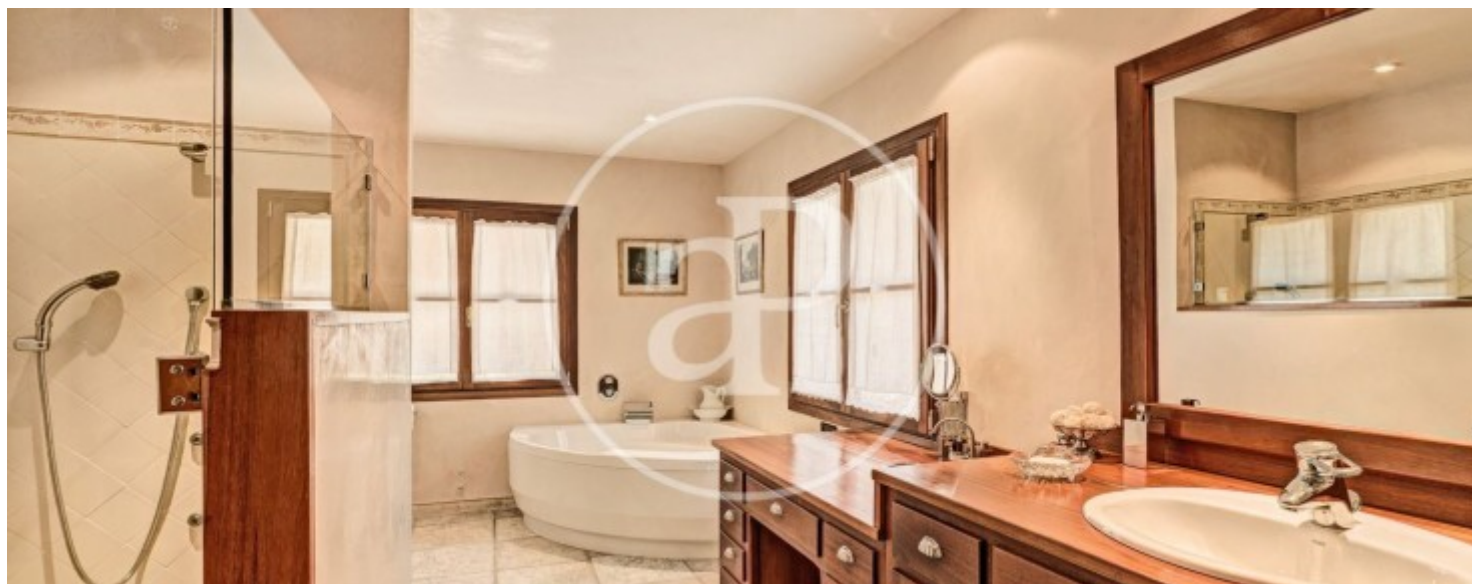
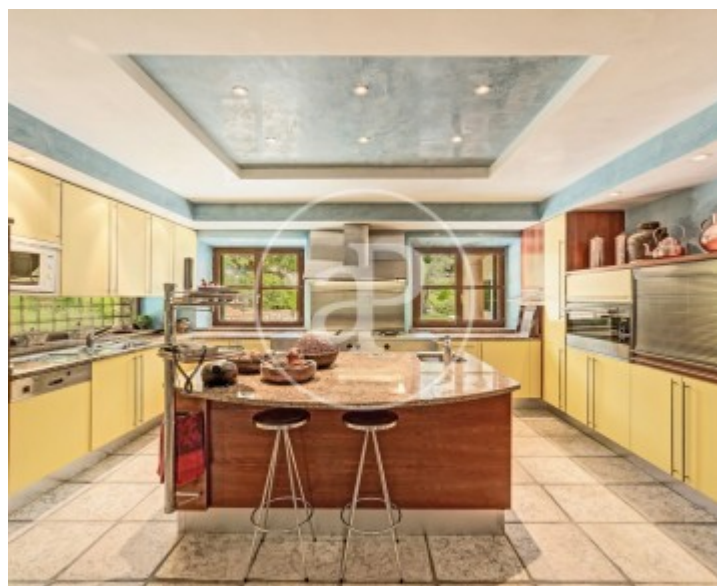
Bunyola, Deià - Bunyola

REF. VPM2211025



Bunyola, Deià - Bunyola

REF. VPM2211025



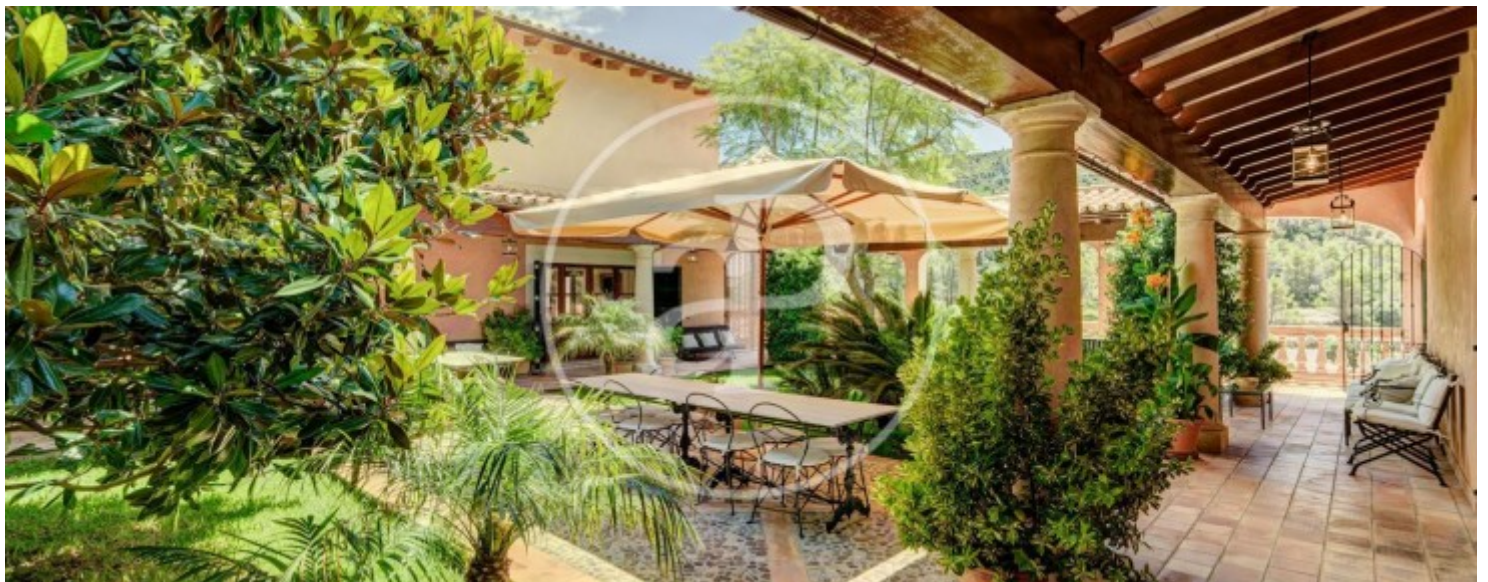


APROPERTIES
REAL ESTATE

Calle Unió 9
07001 Palma
T. 871 16 01 60
www.aproperties.es

Bunyola, Deià - Bunyola

REF. VPM2211025





APROPERTIES
REAL ESTATE

Calle Unió 9
07001 Palma
T. 871 16 01 60
www.aproperties.es

Bunyola, Deià - Bunyola

REF. VPM2211025



The information about any property is not binding to any offer or contract. Any verbal or written declaration made by aProperties with regards to the value or condition of the property should not be considered accurate or factual. The pictures make reference to some parts of the property at the times that they were taken. The areas, dimensions and distances that are given are approximate and should be checked by the client. The images are computer generated and are just an approximate indication of the real appearance of the property; these may change at any time. The information with regards to the property may also change at any time.



For **more information** or
to make an appointment

apropertiespalma@aproperties.es
Tel: 871 16 01 60
www.aproperties.es