

(Bunyola)

Ref: ONPM2308002



Apartments, penthouses, ground floor apartments for sale of New Construction with panoramic views in Bunyola

Situated in the upper part of Bunyola with excellent views of the mountains and the sea, this development of new build homes with garden areas and swimming pool offers design, charm with its original character of the typical Mallorcan village houses with a combination of natural stone façade and rustic waterproof mortar and Mallorcan shutters. Consists of spacious two and three bedroom flats of high quality with fitted wardrobes, one of them en suite, all exterior with balcony or terrace, open plan kitchen to the large living/dining room with pre-installation for fireplace and access to the porch of 13-17sqm with views to the mountains. There are three types of houses: ground floor with porch and garden at the front and terrace at the back, first floor with porch and balcony and second floor/attic with porch, balcony and solarium on the attic floor. The equipment offers high quality details and finishes as well as current performance and energy saving techniques in its installations. Floating laminated parquet or porcelain stoneware floors in wet areas, smooth white lacquered interior carpentry with flush with the wall and stainless steel handles, exterior carpentry with [...]

Deià - Bunyola / Bunyola

Surface
92 m² - 113 m²
Units
36
Completion
Q4 2024

- ✓ Views
- ✓ Heating
- ✓ Boxroom
- ✓ AACC
- ✓ Terrace
- ✓ Backyard
- ✓ Pool
- ✓ Lift
- ✓ Has parking

Price from 385,000 €



(Bunyola)

Ref: ONPM2308002

Units in this development

Type	Unit	Surface	Terrace	Bedrooms	Bathrooms	Price	State
Flat	Bajo A	92 m ²	3 (45 m ²)	2	2	€ 395,000	Available
Flat	Bajo B	102 m ²	3 (48 m ²)	2	2	€ 425,000	Reserved
Flat	1° A	92 m ²	2 (15 m ²)	2	2	€ 385,000	Available
Flat	1° B	102 m ²	2 (18 m ²)	2	2	€ 378,000	Reserved
Attic	2° A	92 m ²	3 (49 m ²)	2	2	€ 490,000	Available
Attic	2° B	102 m ²	3 (64 m ²)	2	2	€ 565,000	Reserved
Flat	Bajo A	92 m ²	3 (58 m ²)	2	2	€ 395,000	Available
Flat	Bajo B	113 m ²	3 (68 m ²)	3	2	€ 438,000	Reserved
Flat	1° A	92 m ²	2 (15 m ²)	2	2	€ 338,000	Reserved
Flat	1° B	113 m ²	2 (18 m ²)	3	2	€ 395,000	Reserved
Attic	2° A	92 m ²	3 (49 m ²)	2	2	€ 490,000	Available
Attic	2° B	113 m ²	3 (64 m ²)	3	2	€ 575,000	Available
Flat	Bajo A	92 m ²	3 (58 m ²)	2	2	€ 395,000	Available
Flat	Bajo B	113 m ²	3 (68 m ²)	3	2	€ 445,000	Available
Flat	1° A	92 m ²	2 (15 m ²)	2	2	€ 338,000	Reserved
Flat	1° B	113 m ²	2 (18 m ²)	3	2	€ 395,000	Reserved
Attic	2° A	92 m ²	3 (49 m ²)	2	2	€ 490,000	Available
Attic	2° B	113 m ²	3 (64 m ²)	3	2	€ 575,000	Available
Flat	Bajo A	92 m ²	3 (58 m ²)	2	2	€ 395,000	Available
Flat	Bajo B	113 m ²	3 (68 m ²)	3	2	€ 445,000	Available
Flat	1° A	92 m ²	2 (15 m ²)	2	2	€ 385,000	Available



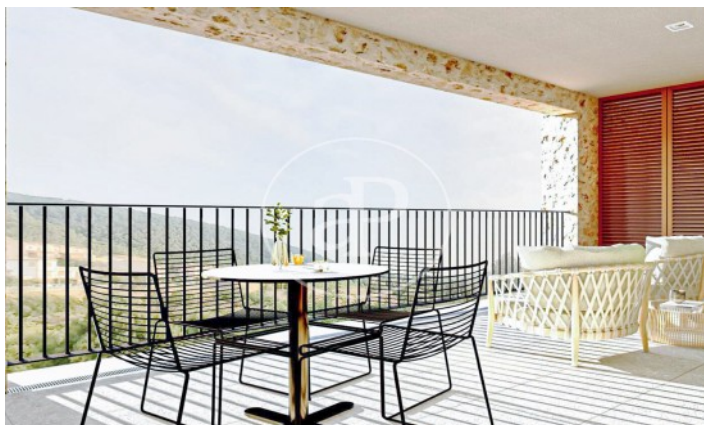
(Bunyola)

Ref: ONPM2308002

Type	Unit	Surface	Terrace	Bedrooms	Bathrooms	Price	State
Flat	1° B	113 m ²	2 (18 m ²)	3	2	€ 420,000	Available
Attic	2° A	113 m ²	3 (49 m ²)	2	2	€ 490,000	Available
Attic	2° B	113 m ²	3 (64 m ²)	3	2	€ 575,000	Available
Flat	Bajo A	92 m ²	3 (58 m ²)	2	2	€ 395,000	Available
Flat	Bajo B	113 m ²	3 (68 m ²)	3	-	€ 438,000	Reserved
Flat	1° A	92 m ²	2 (15 m ²)	2	2	€ 338,000	Reserved
Flat	1° B	113 m ²	2 (18 m ²)	3	2	€ 420,000	Available
Attic	2° A	92 m ²	3 (49 m ²)	2	2	€ 490,000	Available
Attic	2° B	113 m ²	3 (64 m ²)	3	2	€ 575,000	Available
Flat	Bajo A	92 m ²	3 (58 m ²)	2	2	€ 395,000	Available
Flat	Bajo B	113 m ²	3 (68 m ²)	3	2	€ 445,000	Available
Flat	1° A	92 m ²	2 (15 m ²)	2	2	€ 338,000	Reserved
Flat	1° B	113 m ²	2 (18 m ²)	3	2	€ 395,000	Reserved
Attic	2° A	92 m ²	3 (49 m ²)	2	2	€ 490,000	Available
Attic	2° B	113 m ²	3 (64 m ²)	3	2	€ 575,000	Available

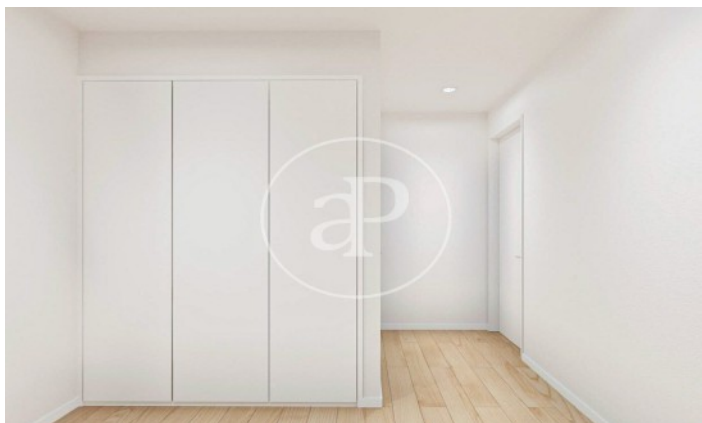
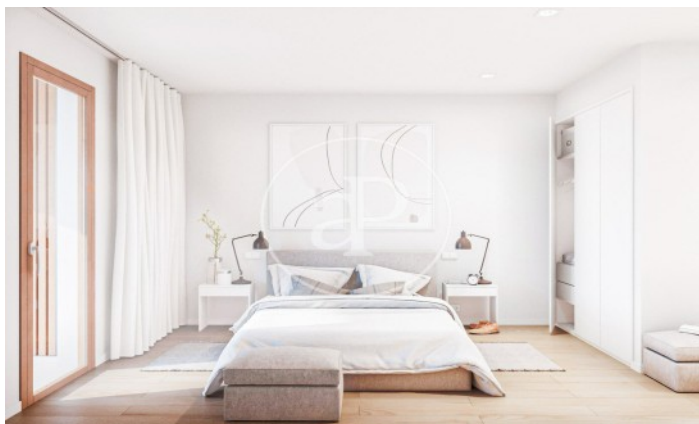
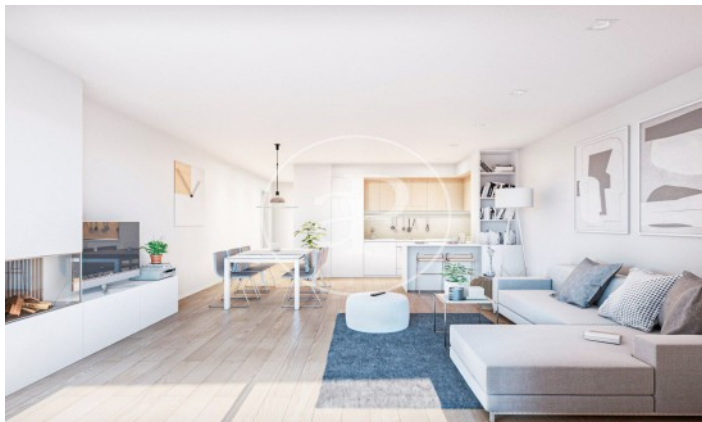
(Bunyola)

Ref: ONPM2308002



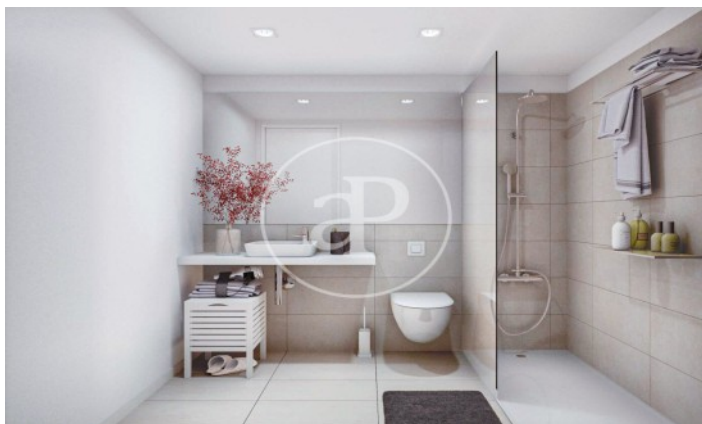
(Bunyola)

Ref: ONPM2308002



(Bunyola)

Ref: ONPM2308002



The information about any property is not binding to any offer or contract. Any verbal or written declaration made by aProperties with regards to the value or condition of the property should not be considered accurate or factual. The pictures make reference to some parts of the property at the times that they were taken. The areas, dimensions and distances that are given are approximate and should be checked by the client. The images are computer generated and are just an approximate indication of the real appearance of the property; these may change at any time. The information with regards to the property may also change at any time.

Contact us today for more information or to arrange a viewing

Tel: 871 16 01 60

apropertiespalma@aproperties.es

<https://www.aproperties.es>