

Bunyola, Deià - Bunyola

REF. VPM2411005

# House for sale in Orient

## Features

- ✓ Views
- ✓ Heating
- ✓ Furnished
- ✓ Boxroom
- ✓ AACC
- ✓ Terrace
- ✓ Backyard
- ✓ Has parking

Surface

**348 m<sup>2</sup>**

Bedrooms

**3**

Bathrooms

**3**

Price

**680,000 €**



**Immerse yourself in the essence of authentic Mallorca with this magnificent Mallorcan house in the idyllic Orient Valley.**

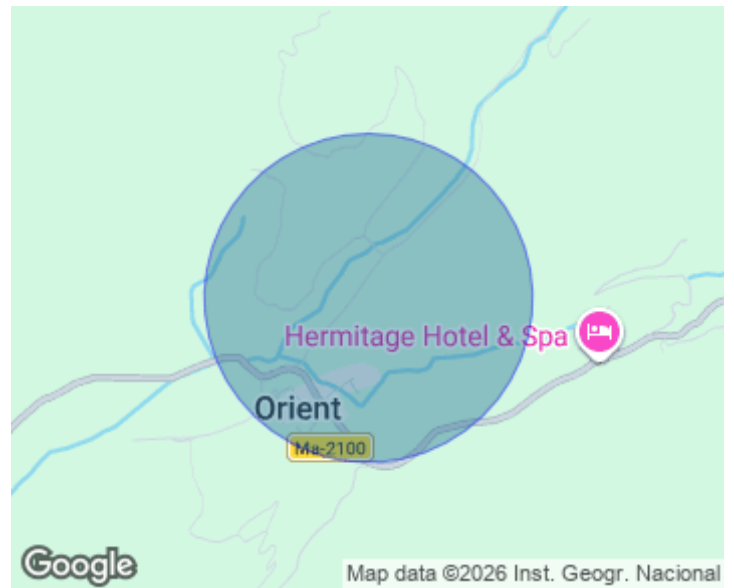
Only 10 -15 minutes from Alaró and 30 minutes from Palma and the airport, this unique property offers you the perfect balance between the tranquillity of the Tramuntana and the proximity to all amenities. Ideal for both living and holidays, thanks to its tourist license. With its fascinating ivy-covered façade and majestic entrance, this property welcomes you with a warm and cosy atmosphere and great privacy. The house has 192 sqm built on a plot of 335 sqm. Three spacious rooms, two terraces and a large porch. Two

fireplaces and a cosy living room with double ambience. Authentic Majorcan kitchen, complete bathroom and additional toilet. Well kept cistern and a persimmon tree, which offers sweet fruits in winter. Facing the mountains and the picturesque village of Orient, the breathtaking views from this house are unrivalled. The property includes an upper terrace of 44 sqm perfect for relaxing in the sun and a lower terrace of 130 sqm with space for sunbeds and snacks. This house is not only an investment opportunity thanks to its holiday license, but a dream home in the heart...

**Contact us,**  
we will be happy to assist you,  
to offer you more details and information.

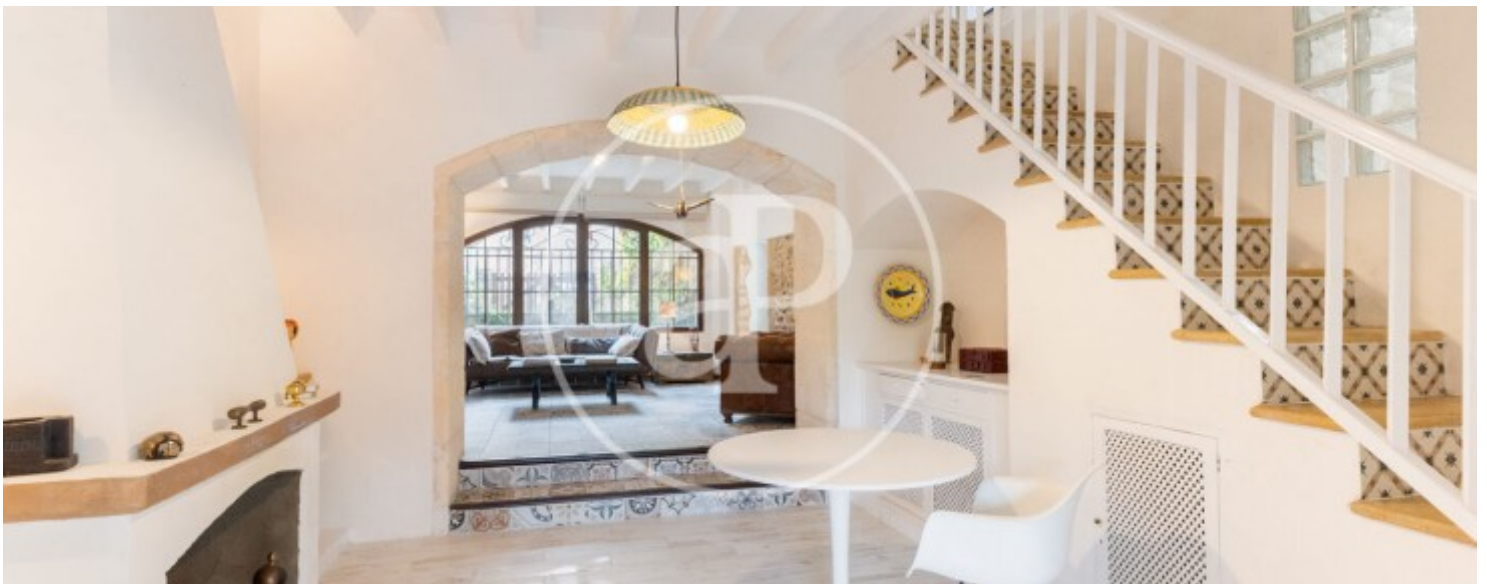
Bunyola, Deià - Bunyola

REF. VPM2411005



Bunyola, Deià - Bunyola

REF. VPM2411005



Bunyola, Deià - Bunyola

REF. VPM2411005



Bunyola, Deià - Bunyola

REF. VPM2411005



The information about any property is not binding to any offer or contract. Any verbal or written declaration made by aProperties with regards to the value or condition of the property should not be considered accurate or factual. The pictures make reference to some parts of the property at the times that they were taken. The areas, dimensions and distances that are given are approximate and should be checked by the client. The images are computer generated and are just an approximate indication of the real appearance of the property; these may change at any time. The information with regards to the property may also change at any time.

For **more information** or  
to make an appointment

[apropertiespalma@aproperties.es](mailto:apropertiespalma@aproperties.es)  
Tel: 871 16 01 60  
[www.aproperties.es](http://www.aproperties.es)