



El Bosque, Chiva

REF. VV2510001

Penthouse for sale with Terrace in El Bosque (Chiva)

Features

- ✓ Views
- ✓ Terrace
- ✓ Security
- ✓ AACC
- ✓ Pool

Price

245,000 €

Surface

70 m²

Bedroom

1

Bathroom

1



aProperties presents this exclusive semi-detached house, located in one of the most prestigious residential developments in Valencia.

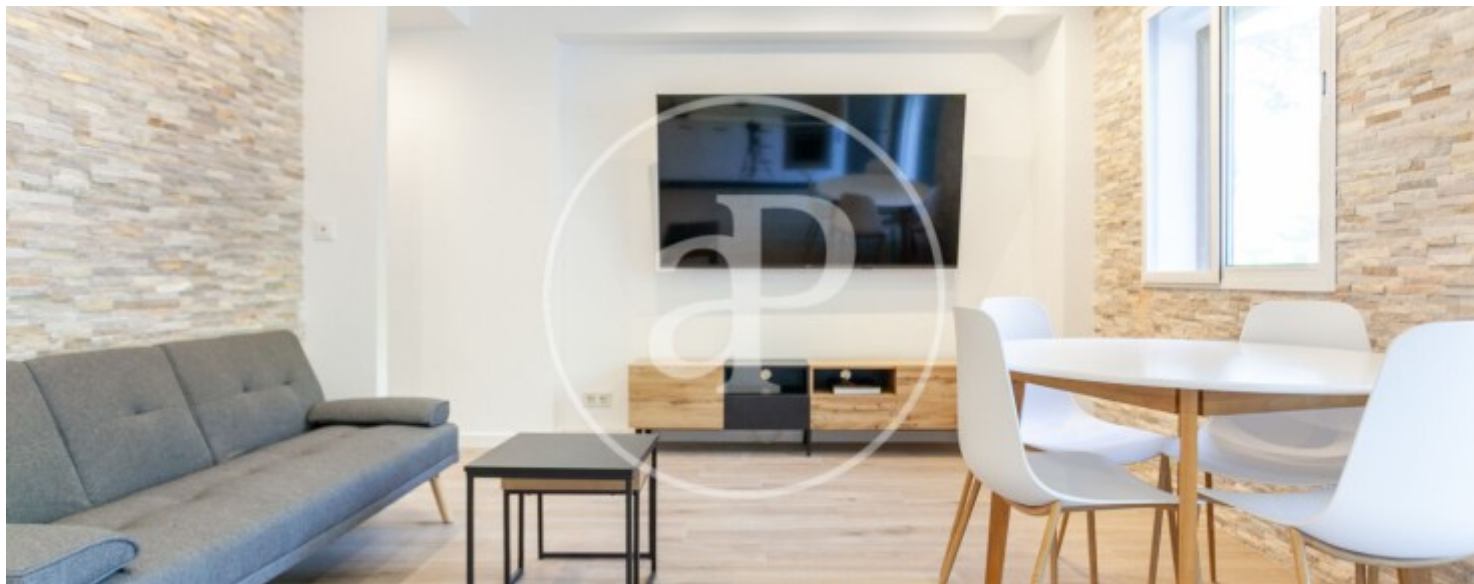
Spread across a single floor, the house offers a bright living-dining room with direct access to a wonderful terrace, as well as an open fully equipped kitchen. It also features a full bathroom with a shower and a cozy bedroom—all designed to provide a comfortable and functional lifestyle. The property allows for the installation of a swimming pool, and includes an outdoor space with room for parking vehicles. Located in the coveted El Bosque residential community, this exclusive area stands out for its natural surroundings, s

ecurity, and high quality of life. It has a golf course, social club with an Olympic swimming pool, sports facilities, restaurants, gated access with barrier, and 24-hour private security. In addition, it is perfectly connected to the airport and the major highways, just 20 minutes from Valencia city center. An ideal place for those seeking a lifestyle surrounded by nature, total security, and access to all kinds of services and amenities. For more information or to schedule a visit, please do not hesitate to contact us. We will be pleased to assist you.

Contact us,
we will be happy to assist you,
to offer you more details and information.

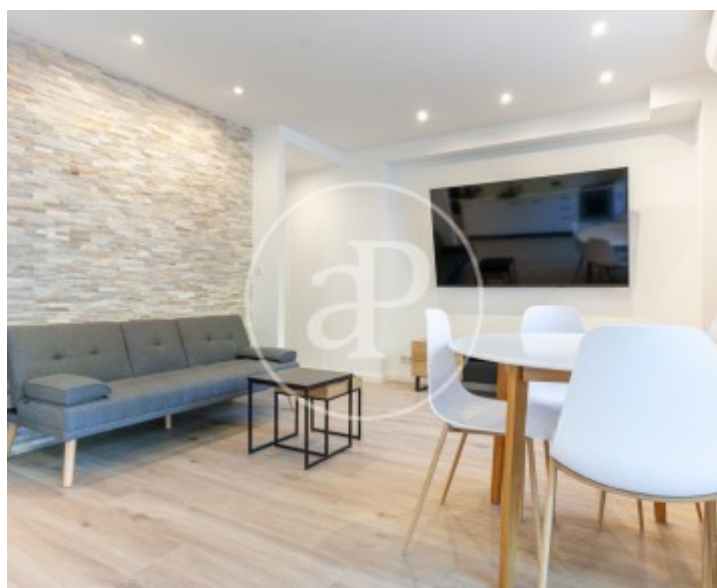
El Bosque, Chiva

REF. VV2510001



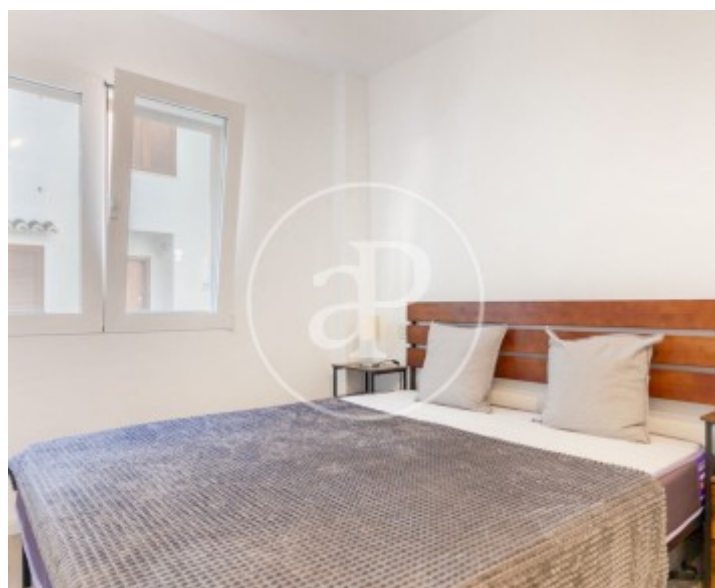
El Bosque, Chiva

REF. VV2510001



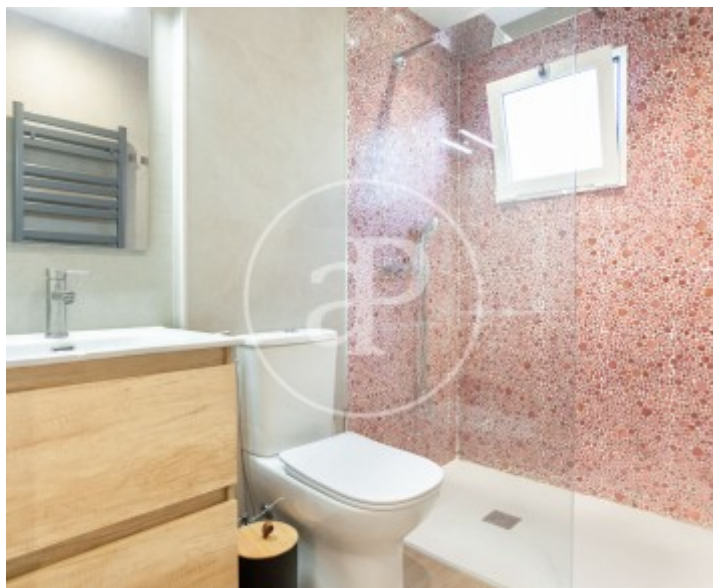
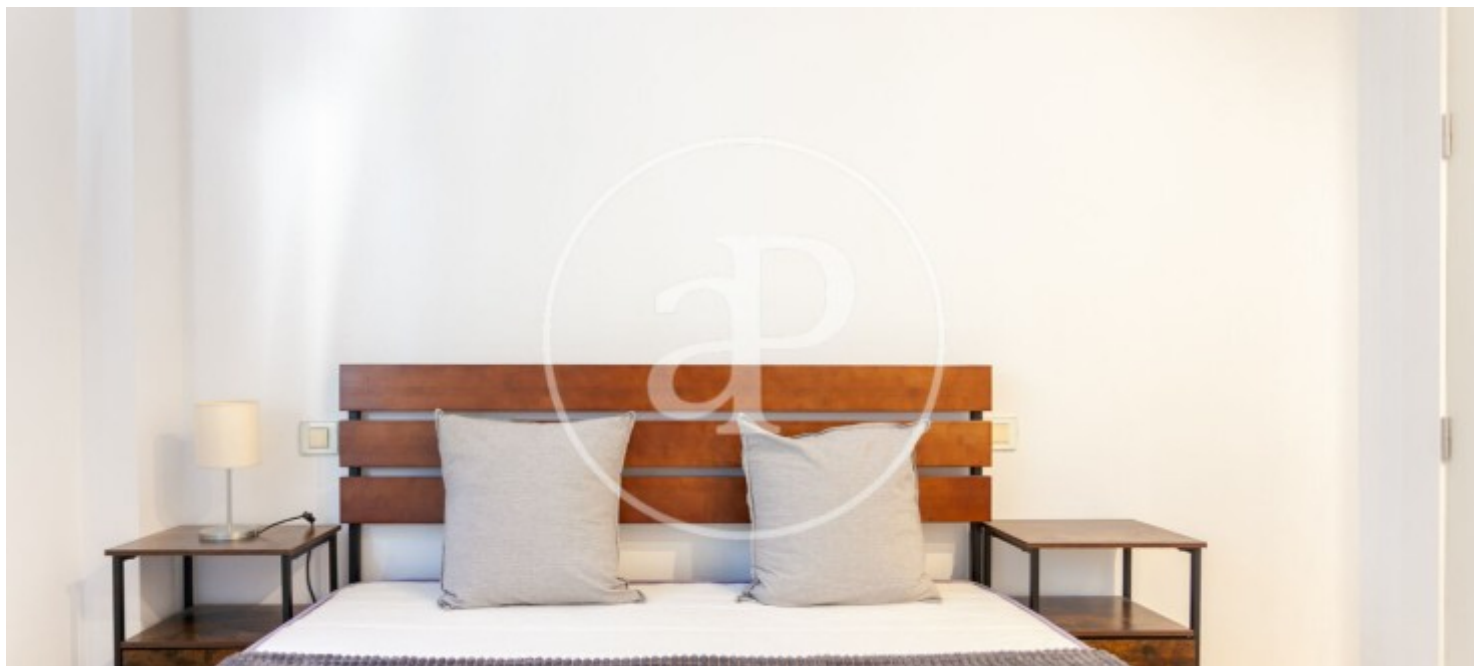
El Bosque, Chiva

REF. VV2510001



El Bosque, Chiva

REF. VV2510001



The information about any property is not binding to any offer or contract. Any verbal or written declaration made by aProperties with regards to the value or condition of the property should not be considered accurate or factual. The pictures make reference to some parts of the property at the times that they were taken. The areas, dimensions and distances that are given are approximate and should be checked by the client. The images are computer generated and are just an approximate indication of the real appearance of the property; these may change at any time. The information with regards to the property may also change at any time.

For **more information** or
to make an appointment

apropertiesvalencia@aproperties.es
Tel: 96 128 59 65
www.aproperties.es