



El Bosque, Chiva

REF. AV2510068

Penthouse for rent with Terrace in El Bosque (Chiva)

Features

- ✓ Views
- ✓ Furnished
- ✓ Terrace
- ✓ Concierge
- ✓ Heating
- ✓ AACC
- ✓ Pool

Surface

70 m²

Bedroom

1

Bathroom

1

Price

1,200 €



aProperties presents this exclusive semi-detached home, located in one of the most prestigious residential areas of Valencia.

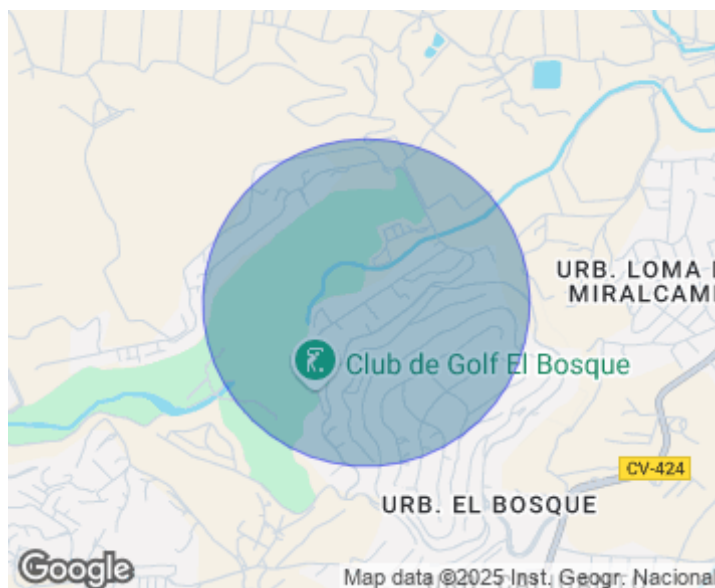
Spread over a single floor, the property offers a bright living-dining room with direct access to a wonderful terrace, and a fully equipped open-plan kitchen. It also features a full bathroom with shower and a cozy bedroom — all designed to provide a comfortable and functional lifestyle. The property allows for the construction of a swimming pool, and includes an outdoor space with capacity to park several vehicles. Located in the sought-after El Bosque residential area, this exclusive neighborhood stands out for its natural

surroundings, security, and high quality of life. It boasts a golf course, a social club with Olympic-size swimming pool, sports facilities, restaurants, gated access, and 24-hour private security. Additionally, it is perfectly connected to the airport and main highways, just 20 minutes from the center of Valencia. An ideal location for those seeking a lifestyle surrounded by nature, complete security, and access to all kinds of services and amenities. For more information or to schedule a visit, please don't hesitate to contact us. We'll be delighted to assist you.

Contact us,
we will be happy to assist you,
to offer you more details and information.

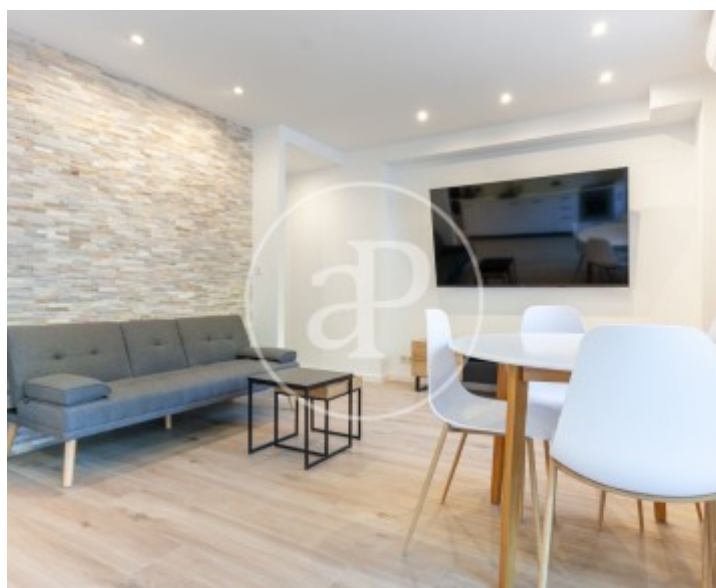
El Bosque, Chiva

REF. AV2510068



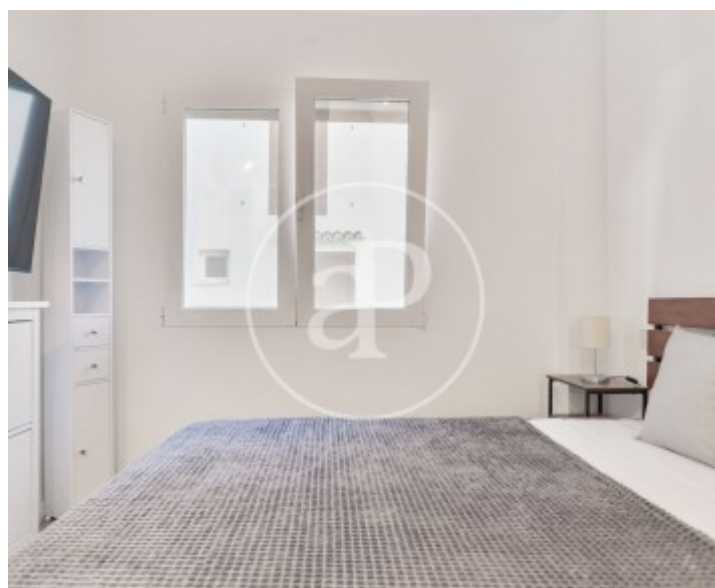
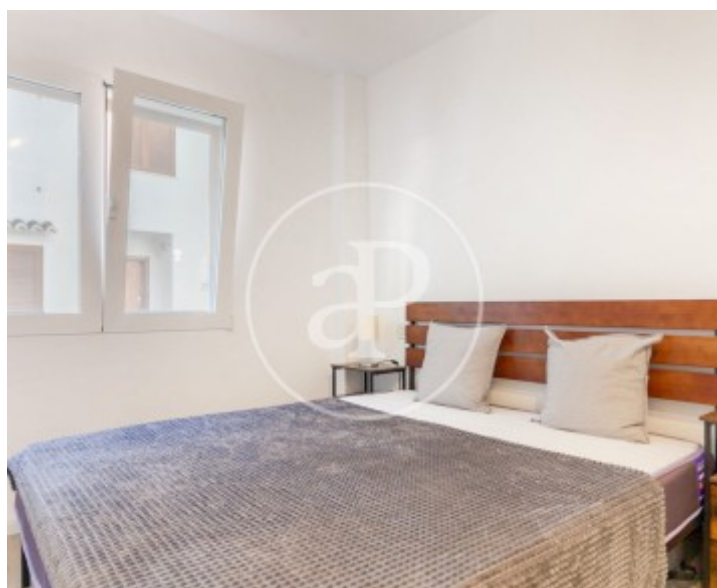
El Bosque, Chiva

REF. AV2510068



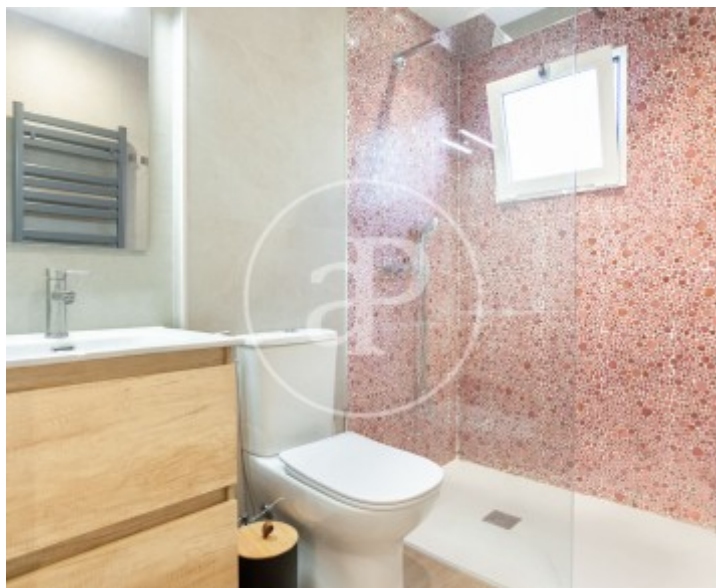
El Bosque, Chiva

REF. AV2510068



El Bosque, Chiva

REF. AV2510068



The information about any property is not binding to any offer or contract. Any verbal or written declaration made by aProperties with regards to the value or condition of the property should not be considered accurate or factual. The pictures make reference to some parts of the property at the times that they were taken. The areas, dimensions and distances that are given are approximate and should be checked by the client. The images are computer generated and are just an approximate indication of the real appearance of the property; these may change at any time. The information with regards to the property may also change at any time.

For **more information** or
to make an appointment

apropertiesvalencia@aproperties.es
Tel: 96 128 59 65
www.aproperties.es