

(Canillo)

Ref: ONB2306005



## New construction for sale in GRANDVALIRA

In Andorra, at the foot of the Grandvalira slopes - the largest ski resort in the Pyrenees - and in a place surrounded by nature, you will find Arbres de El Tarter, by Residencial Altavista. An exclusive new development with 49 homes built with the most modern technologies and equipped with the maximum comfort to enjoy the beauty and magic of the Andorran mountains. Arbres de El Tarter was created to provide quality of life to its occupants as it has a privileged location, a luxurious design in keeping with the surrounding environment, a spa, gym and jacuzzi of more than 450 m2 and a landscaped courtyard of more than 200 m2. The homes, of different sizes (between 53 and 413 m2), have a spacious living-dining room with fireplace, open kitchen equipped with the latest technology and high quality materials, terrace and private parking boxes with pre-installation for charging electric vehicles. The building will also have a concierge service for greater security and attention to residents. In addition, Arbres de El Tarter stands out for its efficient, sophisticated and elegant finishes. In this regard, it is worth mentioning the underfloor heating and air-conditioning by a heating n [...]

Canillo

Unit 1 113

Completion Q2 2024

### FEATURES

Surface 77 m<sup>2</sup> / 14 m<sup>2</sup> terrace

2 Rooms

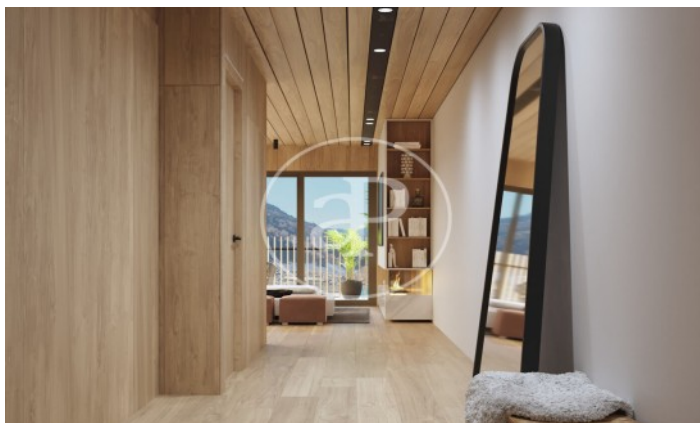
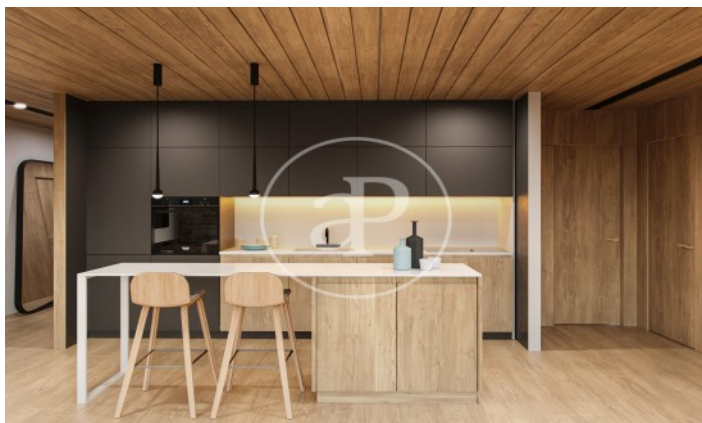
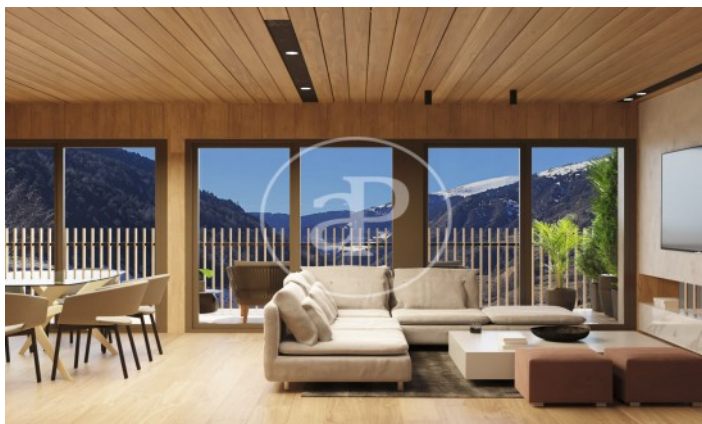
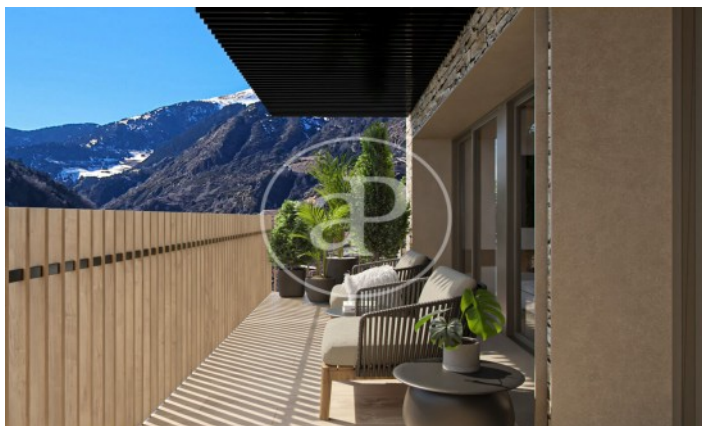
2 Toilets

- ✓ Views
- ✓ Heating
- ✓ Boxroom
- ✓ Terrace
- ✓ Backyard
- ✓ Pool
- ✓ Gym
- ✓ Lift
- ✓ Has parking

Price 508,347 €

(Canillo)

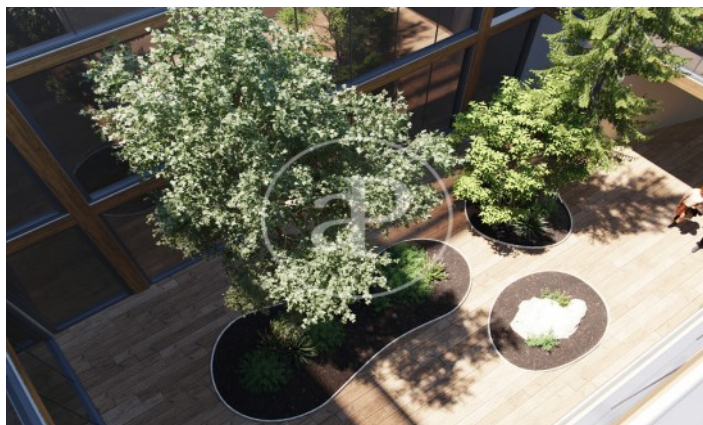
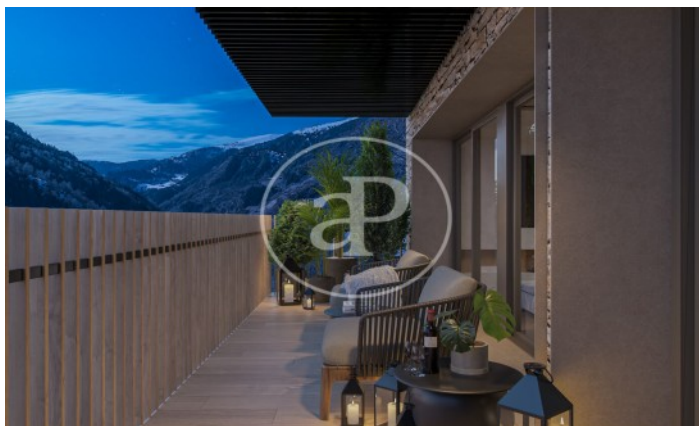
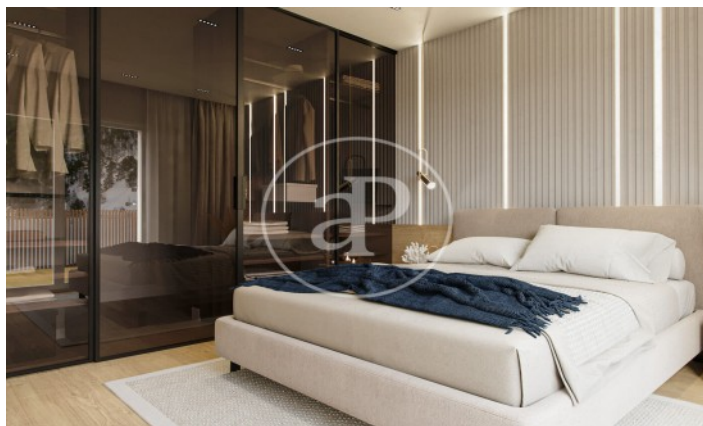
Ref: ONB2306005





(Canillo)

Ref: ONB2306005



(Canillo)

Ref: ONB2306005



The information about any property is not binding to any offer or contract. Any verbal or written declaration made by aProperties with regards to the value or condition of the property should not be considered accurate or factual. The pictures make reference to some parts of the property at the times that they were taken. The areas, dimensions and distances that are given are approximate and should be checked by the client. The images are computer generated and are just an approximate indication of the real appearance of the property; these may change at any time. The information with regards to the property may also change at any time.

Contact us today for more information or to arrange a viewing

Tel: 93 528 89 08

[apropertiesbarcelona@aproperties.es](mailto:apropertiesbarcelona@aproperties.es)

<https://www.aproperties.es>