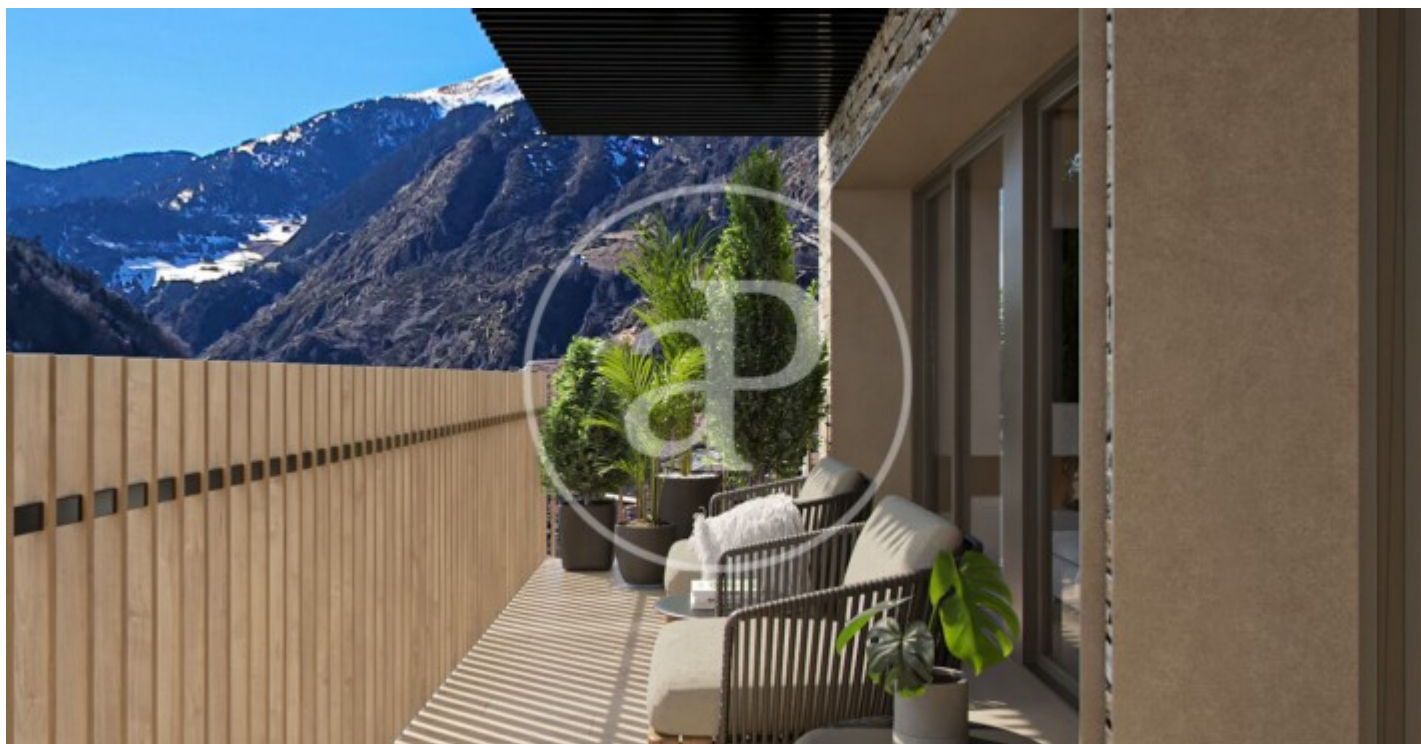


(Canillo)

Ref: ONB2306005



New construction for sale in GRANDVALIRA

In Andorra, at the foot of the Grandvalira slopes - the largest ski resort in the Pyrenees - and in a place surrounded by nature, you will find Arbres de El Tarter, by Residencial Altavista. An exclusive new development with 49 homes built with the most modern technologies and equipped with the maximum comfort to enjoy the beauty and magic of the Andorran mountains. Arbres de El Tarter was created to provide quality of life to its occupants as it has a privileged location, a luxurious design in keeping with the surrounding environment, a spa, gym and jacuzzi of more than 450 m2 and a landscaped courtyard of more than 200 m2. The homes, of different sizes (between 53 and 413 m2), have a spacious living-dining room with fireplace, open kitchen equipped with the latest technology and high quality materials, terrace and private parking boxes with pre-installation for charging electric vehicles. The building will also have a concierge service for greater security and attention to residents. In addition, Arbres de El Tarter stands out for its efficient, sophisticated and elegant finishes. In this regard, it is worth mentioning the underfloor heating and air-conditioning by a heating n [...]

Canillo

Surface
53 m² - 147 m²
Units
49
Completion
Q2 2024

- ✓ Views
- ✓ Heating
- ✓ Boxroom
- ✓ Terrace
- ✓ Backyard
- ✓ Pool
- ✓ Gym
- ✓ Lift
- ✓ Has parking

Price from 508,347 €



(Canillo)

Ref: ONB2306005

Units in this development

Type	Unit	Surface	Terrace	Bedrooms	Bathrooms	Price	State
Flat	1° 104	134 m ²	1 (12.83 m ²)	2	2	On request	Reserved
Flat	1° 107	99 m ²	1 (8.95 m ²)	2	2	€ 660,972	Available
Flat	1° 108	106 m ²	1 (10.86 m ²)	3	2	€ 739,591	Available
Flat	1° 109	101 m ²	1 (7.87 m ²)	2	2	€ 621,924	Available
Flat	1° 112	86 m ²	1 (7.06 m ²)	2	2	€ 565,504	Available
Flat	1° 113	77 m ²	1 (13.57 m ²)	2	2	€ 508,347	Available
Flat	2° 201	133 m ²	1 (8.36 m ²)	3	2	€ 1,327,020	Available
Flat	2° 202	147 m ²	1 (12.42 m ²)	3	3	On request	Reserved
Flat	2° 203	133 m ²	1 (12.62 m ²)	3	2	On request	Reserved
Flat	2° 206	93 m ²	1 (8.08 m ²)	2	2	On request	Reserved
Flat	2° 207	99 m ²	1 (8.95 m ²)	2	2	On request	Reserved
Flat	2° 208	106 m ²	1 (10.86 m ²)	3	2	€ 839,591	Available
Flat	2° 209	101 m ²	1 (7.87 m ²)	2	2	€ 807,032	Available
Flat	2° 210	105 m ²	1 (9.42 m ²)	3	2	€ 834,608	Available
Flat	2° 211	108 m ²	1 (10 m ²)	3	2	€ 853,544	Available
Flat	2° 212	86 m ²	1 (7.06 m ²)	2	2	€ 704,128	Available
Flat	2° 213	77 m ²	1 (13.57 m ²)	2	2	€ 631,979	Available
Flat	3° 301	133 m ²	1 (8.36 m ²)	2	2	€ 1,397,020	Available
Flat	3° 304	134 m ²	1 (12.83 m ²)	2	2	On request	Reserved
Flat	3° 306	93 m ²	1 (8.08 m ²)	2	2	€ 908,131	Available
Flat	3° 307	99 m ²	1 (8.95 m ²)	2	2	€ 830,972	Available



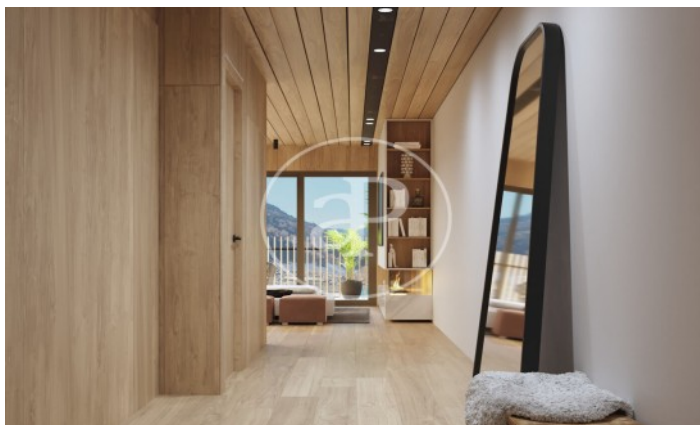
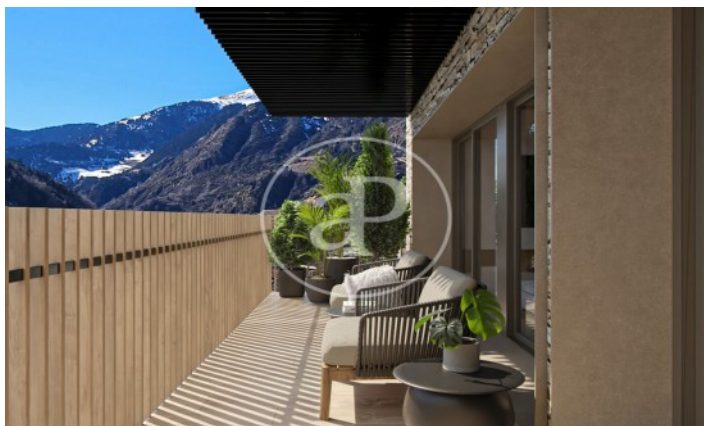
(Canillo)

Ref: ONB2306005

Type	Unit	Surface	Terrace	Bedrooms	Bathrooms	Price	State
Flat	3° 308	106 m ²	1 (10.86 m ²)	3	2	€ 909,591	Available
Flat	3° 309	101 m ²	1 (7.87 m ²)	2	2	€ 827,394	Available
Flat	3° 311	108 m ²	1 (10 m ²)	3	2	€ 875,198	Available
Flat	3° 312	86 m ²	1 (7.06 m ²)	2	2	€ 721,456	Available
Flat	3° 313	77 m ²	1 (13.57 m ²)	2	2	€ 647,433	Available
Flat	4° 407	99 m ²	1 (8.95 m ²)	2	2	€ 1,198,300	Available
Flat	4° 408	106 m ²	1 (10.86 m ²)	3	2	€ 1,271,285	Available
Flat	4° 409	101 m ²	1 (7.87 m ²)	2	2	€ 1,357,937	Available
Flat	4° 412	86 m ²	1 (7.06 m ²)	2	2	€ 784,448	Available
Flat	4° 413	77 m ²	1 (13.57 m ²)	2	2	€ 670,614	Available
Flat	3° 302	147 m ²	1 (12.42 m ²)	3	3	€ 1,563,082	Available
Flat	3° 310	105 m ²	1 (9.42 m ²)	3	2	€ 855,736	Available

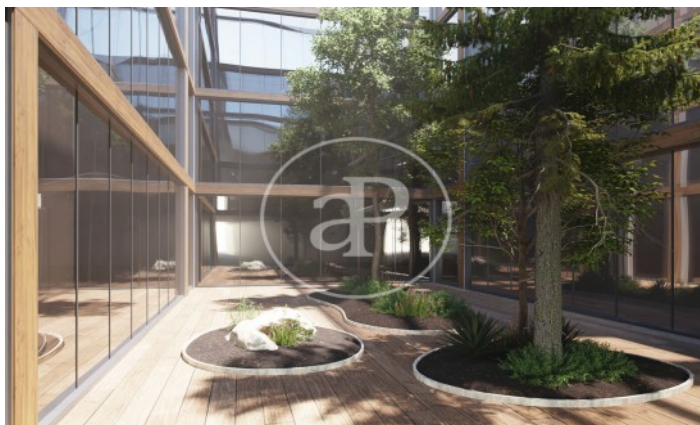
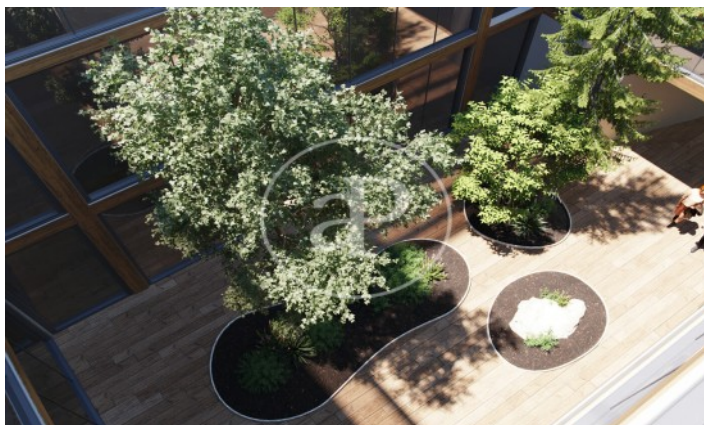
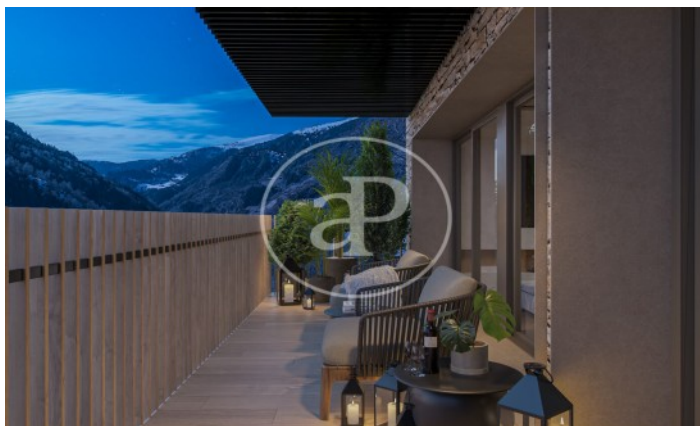
(Canillo)

Ref: ONB2306005



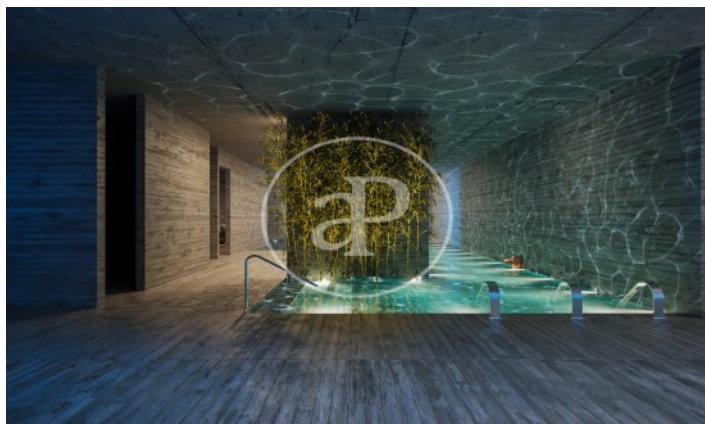
(Canillo)

Ref: ONB2306005



(Canillo)

Ref: ONB2306005



The information about any property is not binding to any offer or contract. Any verbal or written declaration made by aProperties with regards to the value or condition of the property should not be considered accurate or factual. The pictures make reference to some parts of the property at the times that they were taken. The areas, dimensions and distances that are given are approximate and should be checked by the client. The images are computer generated and are just an approximate indication of the real appearance of the property; these may change at any time. The information with regards to the property may also change at any time.

Contact us today for more information or to arrange a viewing

Tel: 93 528 89 08

apropertiesbarcelona@aproperties.es

<https://www.aproperties.es>