

(Canet d'En Berenguer)

Ref: ONV2311005



## *New building (work) for sale with Terrace in Canet d'En Berenguer*

Aldabra Residencial stands as an exceptional enclave that redefines the notion of home. With 60 carefully designed homes, ranging from 2, 3 to 4 bedrooms, this space is presented as the perfect corner for those looking for a bright, spacious home with an impeccable distribution. Each of the residences in Aldabra has terraces ranging between 15 and 50 square meters, providing an outdoor space that fuses elegance and comfort. Cross ventilation and, in many cases, stunning views of the sea, add a touch of exclusivity to each home. From duplex penthouses to ground floors with generous terraces, the homes adapt to various lifestyles, offering customization options in bathrooms and a Premium Pack that guarantees the incorporation of top quality materials. Aldabra Residencial goes beyond aesthetics and interior luxury; embraces high standards of energy efficiency and sustainability. The interior spaces, in addition to being spacious and practical, are designed for family enjoyment, creating a perfect balance between functionality and comfort. The common areas of Aldabra Residencial are a true oasis of services. The spectacular pool invites you to swim and cool off, with a sheet of water [...]

Canet d'En Berenguer

Unit 4 4

Completion Q4 2024

### FEATURES

Surface 119 m<sup>2</sup> / 53 m<sup>2</sup> terrace

3 Rooms

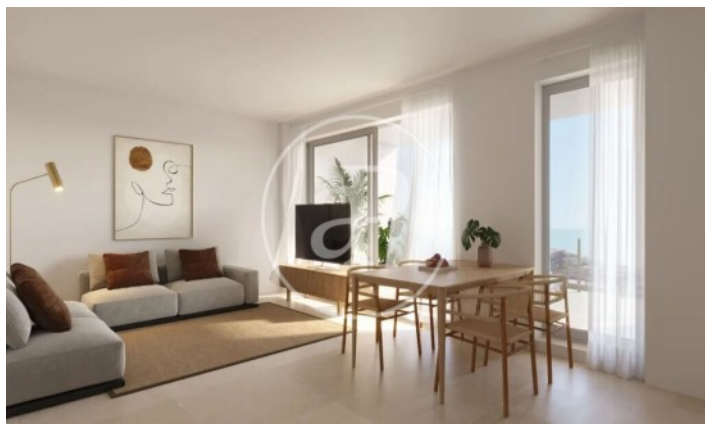
2 Toilets

- ✓ Views
- ✓ Heating
- ✓ AACC
- ✓ Terrace
- ✓ Backyard
- ✓ Pool
- ✓ Gym
- ✓ Lift
- ✓ Has parking

Price 380,000 €

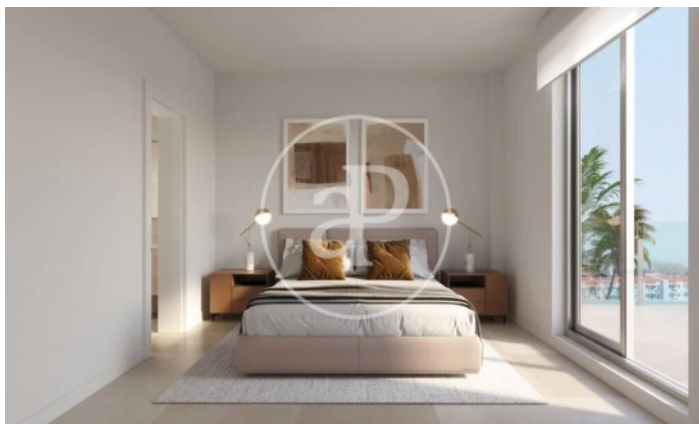
(Canet d'En Berenguer)

Ref: ONV2311005



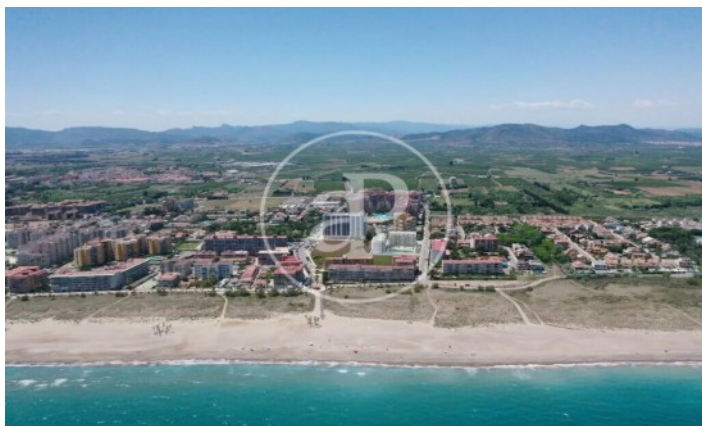
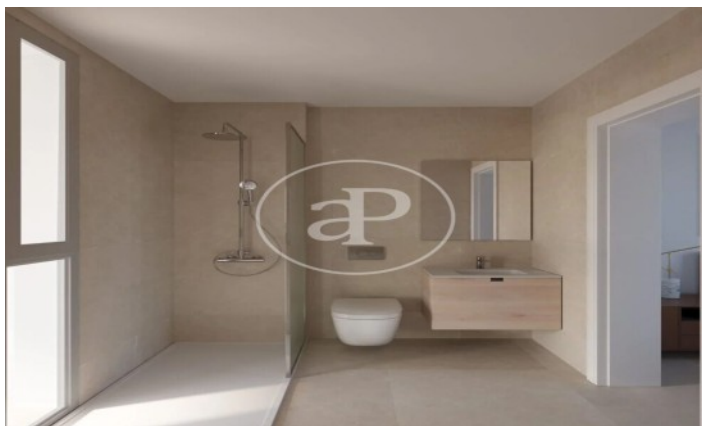
(Canet d'En Berenguer)

Ref: ONV2311005



(Canet d'En Berenguer)

Ref: ONV2311005



The information about any property is not binding to any offer or contract. Any verbal or written declaration made by aProperties with regards to the value or condition of the property should not be considered accurate or factual. The pictures make reference to some parts of the property at the times that they were taken. The areas, dimensions and distances that are given are approximate and should be checked by the client. The images are computer generated and are just an approximate indication of the real appearance of the property; these may change at any time. The information with regards to the property may also change at any time.

Contact us today for more information or to arrange a viewing

Tel: 96 128 59 65

[apropertiesvalencia@aproperties.es](mailto:apropertiesvalencia@aproperties.es)

<https://www.aproperties.es>