



Ses Salines, Ses Salines

REF. VPM2403010

House for sale in Ses Salines

Features

- ✓ Views
- ✓ Terrace
- ✓ Pool
- ✓ Furnished
- ✓ Backyard
- ✓ Has parking

Price

1,450,000 €

Surface
198 m²

Plot surface
15,000 m²

Bedrooms
4

Bathrooms
2



Located in the municipal area of Ses Salines, between the town and Colonia Sant Jordi, near the best beaches on the island such as Estrenc Beach and various coves, in a spectacular environment with plenty of privacy, you will find this comfortable country house with a fertile plot of 15,000sqm containing 50 olive trees and 50 almond trees. This privileged location makes this house an ideal retreat for sports enthusiasts of all kinds. It borders with S'Avall, has piped water, its own water well, connection to the ENDESA electricity grid, a mill where the swimming pool is located, and an annex (formerly the dairy) currently used as a large garage and storage space that could be converted into a bungalow. The 140sqm house consists of two floors. On the ground floor, there is a spacious living-dining room

open to a beautiful porch with lovely views, an open kitchen, a versatile room with independent entrance, and a complete bathroom with shower. The interior staircase leads to the upper floor where there are two double bedrooms, a bathroom, and a large terrace with views. Additionally, access to the first floor is also possible via an external staircase, providing independence. The property features terracotta floors, double glazed windows, two independent electric water heaters, and a water...

Contact us,
we will be happy to assist you,
to offer you more details and information.

Ses Salines, Ses Salines

REF. VPM2403010



Ses Salines, Ses Salines

REF. VPM2403010



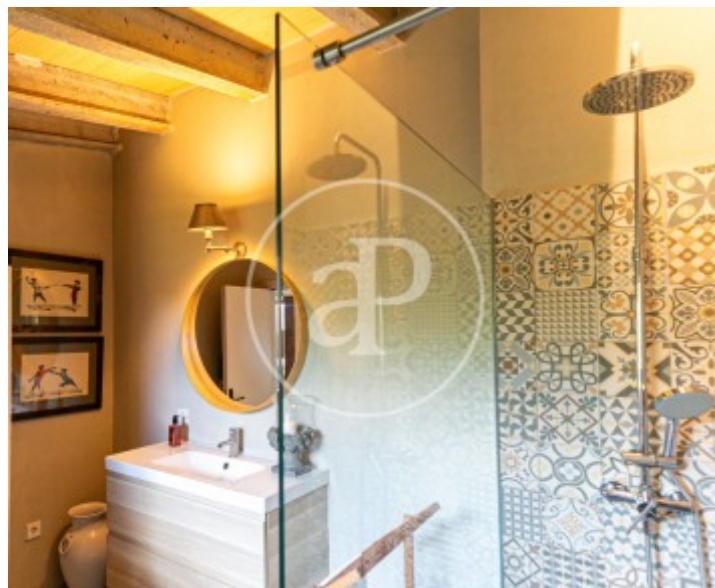
Ses Salines, Ses Salines

REF. VPM2403010



Ses Salines, Ses Salines

REF. VPM2403010



The information about any property is not binding to any offer or contract. Any verbal or written declaration made by aProperties with regards to the value or condition of the property should not be considered accurate or factual. The pictures make reference to some parts of the property at the times that they were taken. The areas, dimensions and distances that are given are approximate and should be checked by the client. The images are computer generated and are just an approximate indication of the real appearance of the property; these may change at any time. The information with regards to the property may also change at any time.

For **more information** or
to make an appointment

apropertiespalma@aproperties.es
Tel: 871 16 01 60
www.aproperties.es