



Còlonia de Sant Jordi, Ses Salines

REF. VPM2502028

Apartment for sale in Colonia Sant Jordi

Features

- ✓ Views
- ✓ Heating
- ✓ Furnished
- ✓ AACC
- ✓ Terrace
- ✓ Has parking

Price

650,000 €

Surface

159 m²

Bedrooms

4

Bathrooms

3



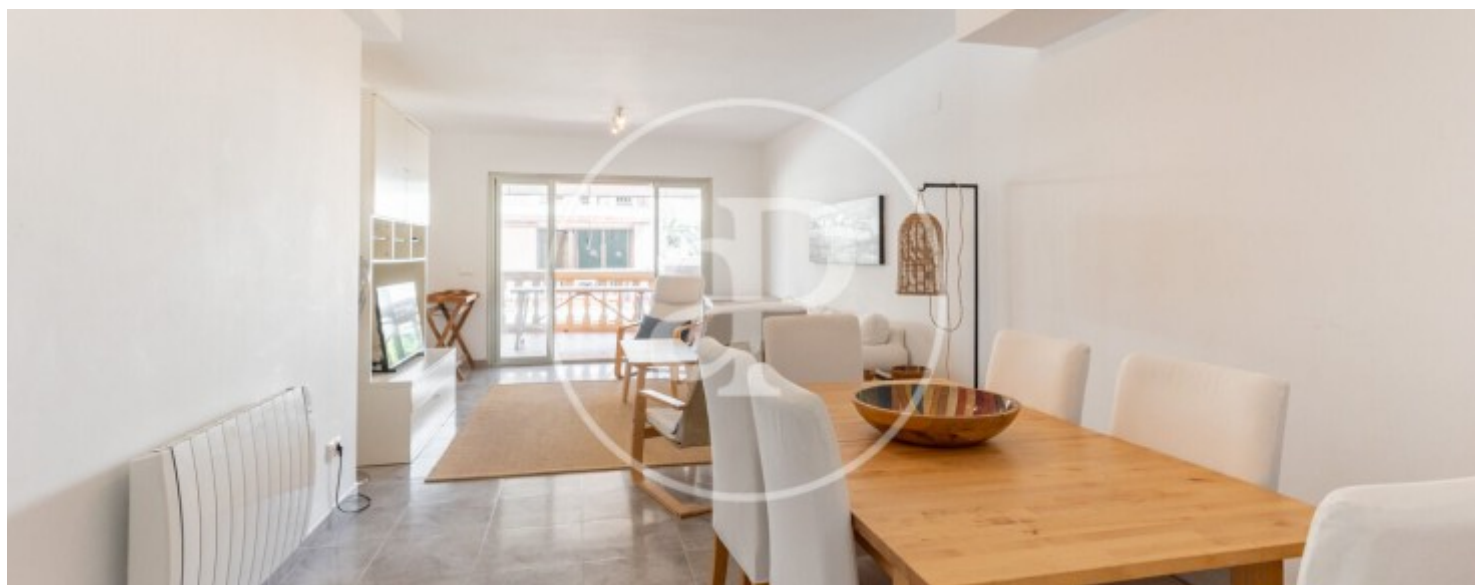
In the southeast of the island lies the picturesque fishing village of Colonia de Sant Jordi, one of the most sought-after destinations, especially for families looking for the authenticity and charm of coastal towns, surrounded by the stunning beaches of Es Trenc, Salines, and the island of Cabrera. This area offers an excellent gastronomic scene and is home to exclusive beach clubs. In the privileged residential area of Cala Galiota, you will find this spacious apartment with a terrace, four bedrooms, and three bathrooms, perfect for those seeking peace and comfort by the sea. The entrance leads to a bright living-dining room with access to a large terrace with lateral sea views, and an independent kitchen with direct access to the same terrace. The master bedroom, en suite, also has access to the

terrace. The sleeping area consists of three double, exterior bedrooms with built-in wardrobes; one of them is en suite, while the other two share a bathroom. The property also features a laundry area and tiled floors. It includes an outdoor parking space. Do not hesitate to request a viewing. Can you imagine living here?

Contact us,
we will be happy to assist you,
to offer you more details and information.

Còlònia de Sant Jordi, Ses Salines

REF. VPM2502028



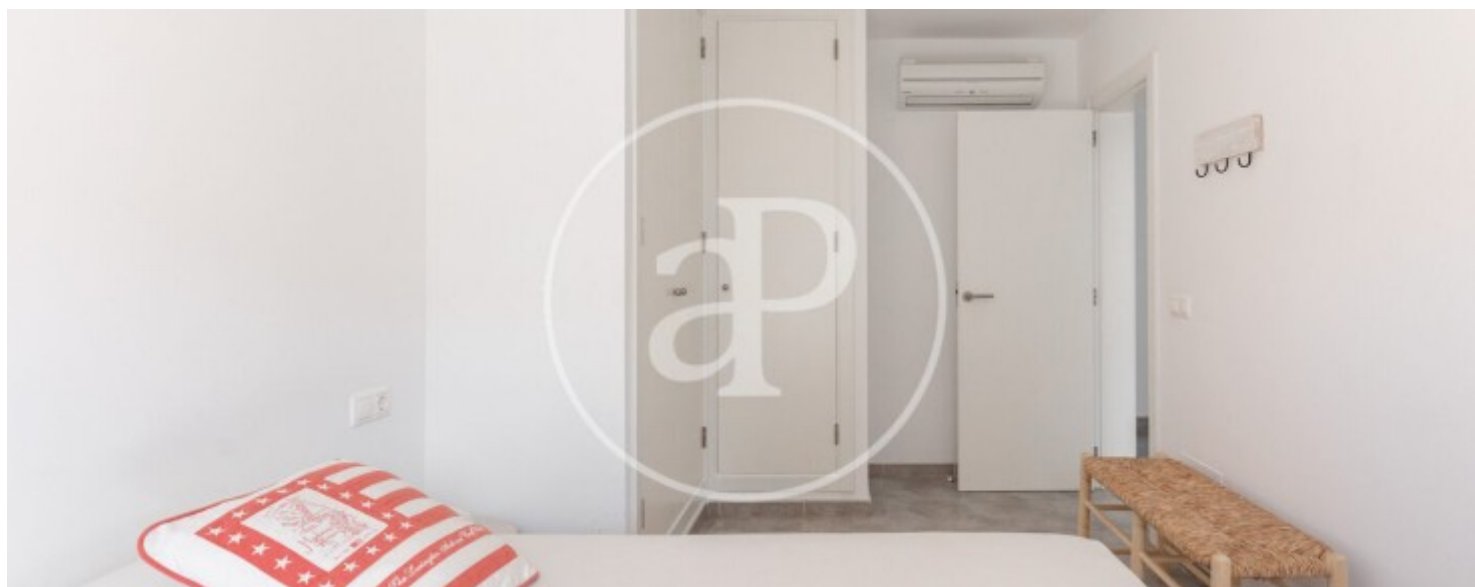
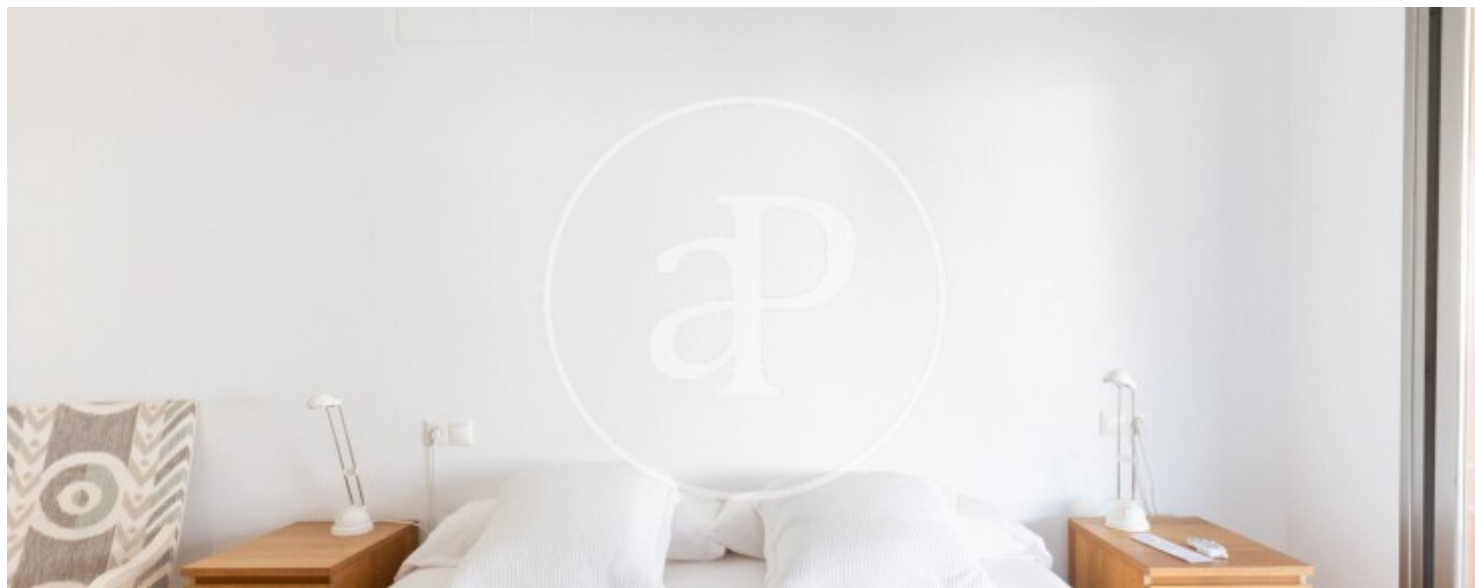
Còlònia de Sant Jordi, Ses Salines

REF. VPM2502028



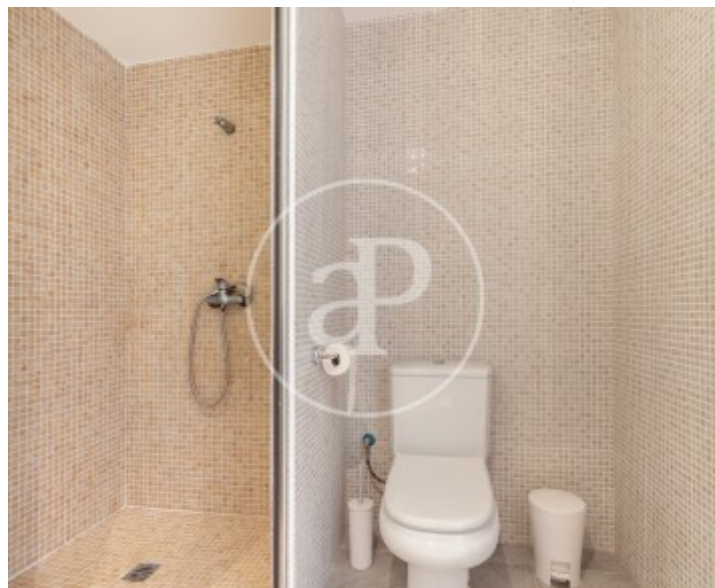
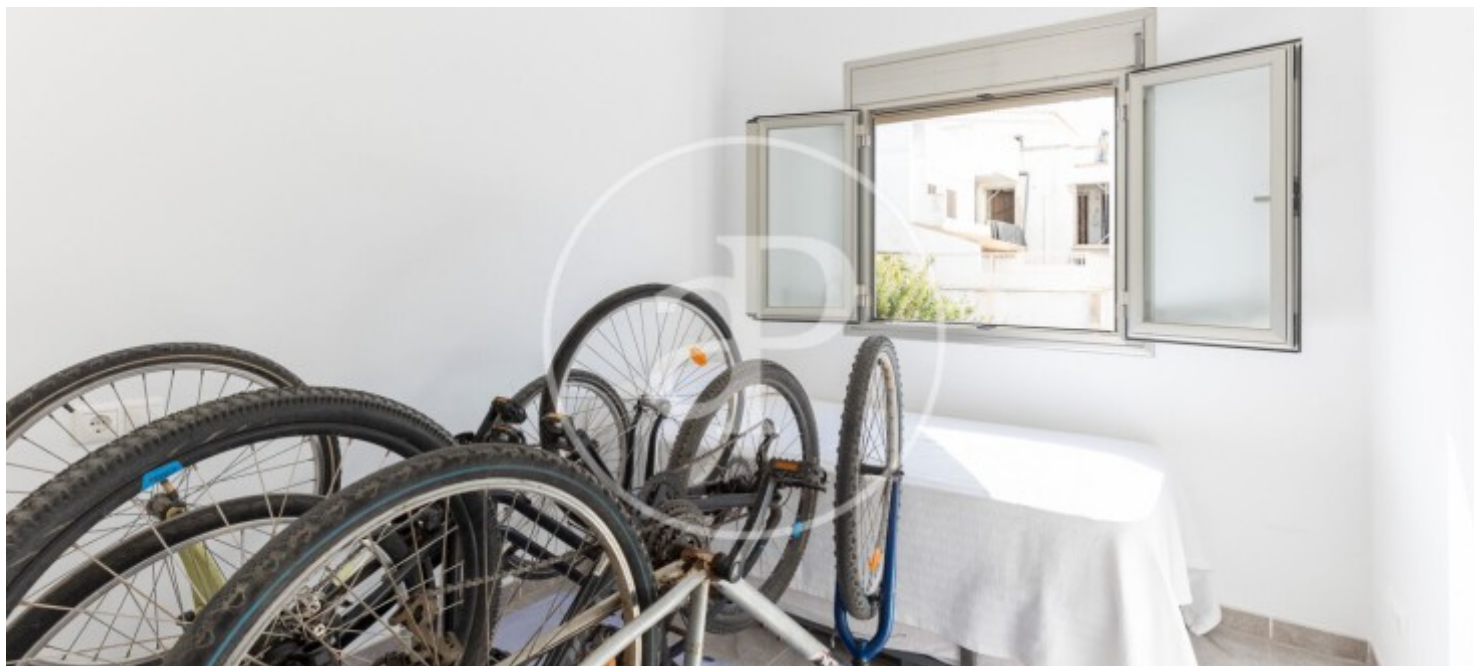
Còlònia de Sant Jordi, Ses Salines

REF. VPM2502028



Còlonia de Sant Jordi, Ses Salines

REF. VPM2502028



The information about any property is not binding to any offer or contract. Any verbal or written declaration made by aProperties with regards to the value or condition of the property should not be considered accurate or factual. The pictures make reference to some parts of the property at the times that they were taken. The areas, dimensions and distances that are given are approximate and should be checked by the client. The images are computer generated and are just an approximate indication of the real appearance of the property; these may change at any time. The information with regards to the property may also change at any time.

For **more information** or
to make an appointment

apropertiespalma@aproperties.es
Tel: 871 16 01 60
www.aproperties.es