

Còlonia de Sant Jordi, Ses Salines

REF. APMS2402035

Apartment for rent in Colonia de Sant Jordi

Features

- ✓ Furnished
- ✓ AACC
- ✓ Boxroom
- ✓ Terrace

Surface

150 m²

Bedrooms

3

Bathrooms

2

Price

1,800 €



MINIMUM RENTAL OF 32 DAYS WINTER SEASON (NOV.

-MAR.): 1.950€. 11 MONTHS: 2.300€. SUMMER SEASON: CHECK PRICE In the best location of Colonia de St Jordi. Typical Majorcan house, completely renovated with great care, respecting the origins of the place. It is the union of modern comfort with the charm of the past. A place with character and magic. It is a beautiful semi-detached house with lots of natural light located in the heart of Colonia de Sant Jordi, a charming village on the southeast coast of Mallorca. The property, with 150sqm of living space, has two beautifully decorated bedrooms, each with ample storage space and comfortable furniture. It

has two bathrooms which are fully equipped with all the essentials. In a typical Mallorcan finca from the beginning of the last century, with lots of character, it is on the first floor with a totally independent entrance. A special place, with charm, in the middle of marine nature and fully equipped. The house comes fully furnished with an elegant and contemporary design that is both functional and comfortable. With plenty of seating and dining areas, you will be able to entertain guests and enjoy quality time. The kitchen is fully equipped with all the appliances you will need. One of the...

Contact us,
we will be happy to assist you,
to offer you more details and information.

Colònia de Sant Jordi, Ses Salines

REF. APMS2402035



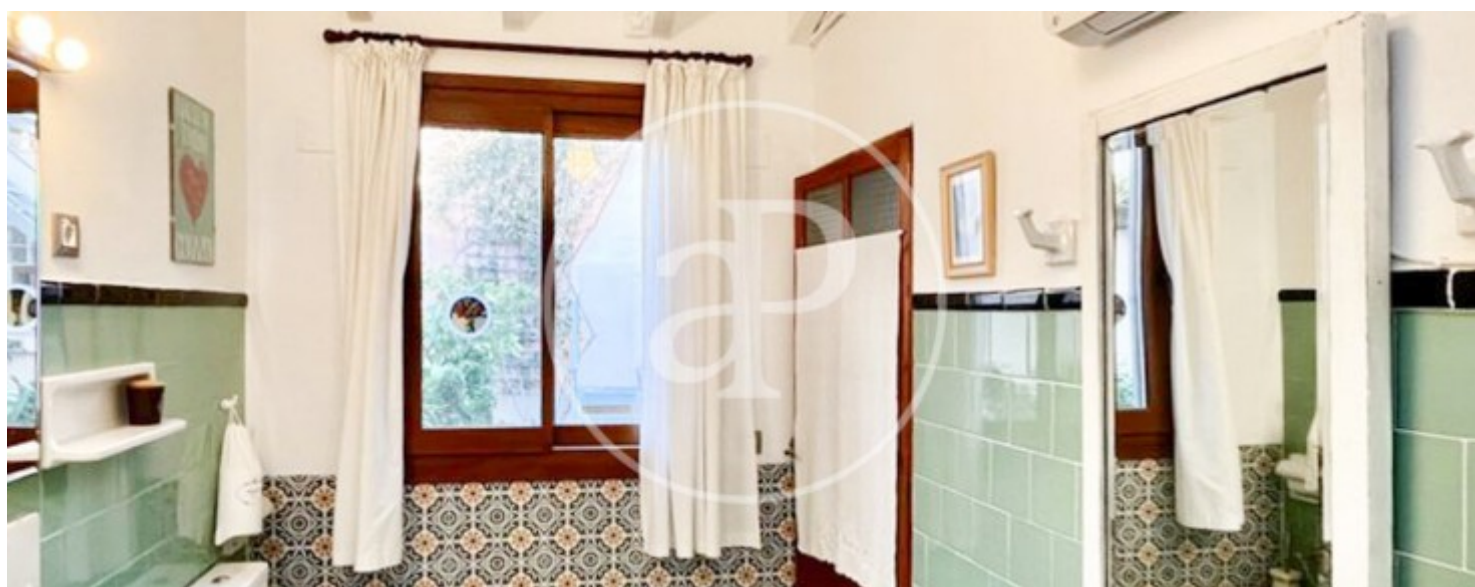
Còlonia de Sant Jordi, Ses Salines

REF. APMS2402035



Còlonia de Sant Jordi, Ses Salines

REF. APMS2402035



Còlonia de Sant Jordi, Ses Salines

REF. APMS2402035



The information about any property is not binding to any offer or contract. Any verbal or written declaration made by aProperties with regards to the value or condition of the property should not be considered accurate or factual. The pictures make reference to some parts of the property at the times that they were taken. The areas, dimensions and distances that are given are approximate and should be checked by the client. The images are computer generated and are just an approximate indication of the real appearance of the property; these may change at any time. The information with regards to the property may also change at any time.

For **more information** or
to make an appointment

apropertiespalma@aproperties.es
Tel: 871 16 01 60
www.aproperties.es