

Campos, Campos

REF. APM2309027



## Historic house for rent in Campos

### Features

- ✓ Views
- ✓ Heating
- ✓ Furnished
- ✓ Boxroom
- ✓ AACC
- ✓ Terrace
- ✓ Backyard
- ✓ Has parking

Price

**6,000 €**

Surface

**1,000 m<sup>2</sup>**

Bedrooms

**7**

Bathrooms

**4**



### AVAILABLE FOR LONG STAY.

Step back in time and experience the grandeur of this exquisite historic mansion located in the charming village of Campos. This timeless residence, built in 1792, is a testament to the architectural beauty and elegance of its time. This historic mansion boasts the classical architectural style of the late 18th century, characterised by its imposing façade, perfectly preserved ornamental details and robust construction. It is spread over two floors. It offers three opulent salons on the ground floor, adorned with timeless décor and crystal chandeliers, and has seven bedrooms. The upper floor houses a large music room with a

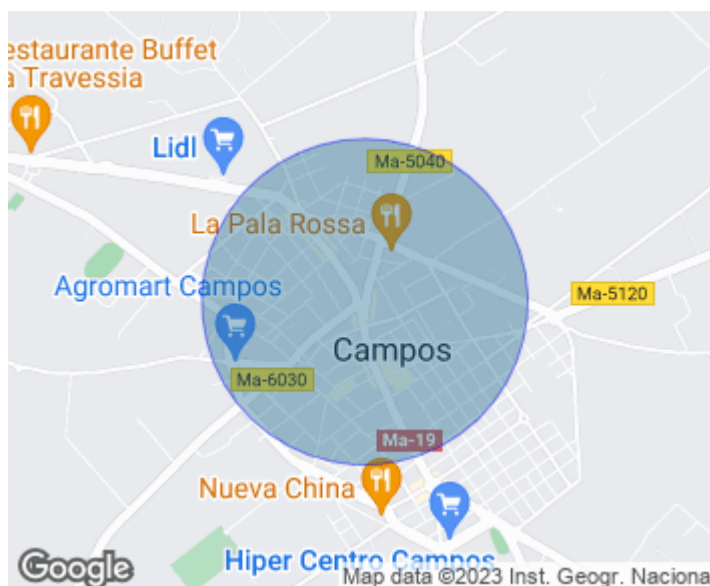
piano, perfect for entertaining guests or enjoying musical evenings. An additional unoccupied third floor adds intrigue to the property. Two terraces, one at the top of the main structure and another extending from the ground floor, offer breathtaking views of the surrounding city and landscape. Beneath the mansion is a spacious, high-ceilinged underground room with multiple possibilities for use. Can you imagine living here, we are waiting for your call!

**Contact us,**  
we will be happy to assist you,  
to offer you more details and information.



Campos, Campos

REF. APM2309027





Campos, Campos

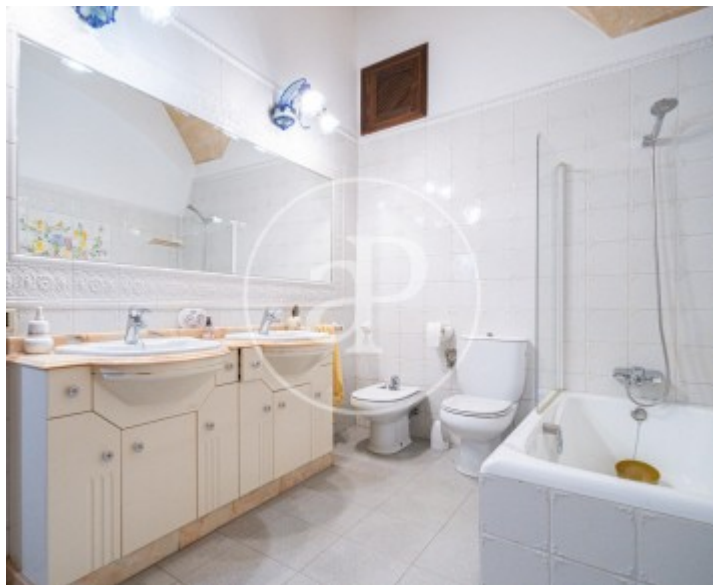
REF. APM2309027





Campos, Campos

REF. APM2309027





**APROPERTIES**  
REAL ESTATE

Calle Unió 9  
07001 Palma  
T. 871 16 01 60  
[www.aproperties.es](http://www.aproperties.es)

**Campos, Campos**

**REF. APM2309027**



The information about any property is not binding to any offer or contract. Any verbal or written declaration made by aProperties with regards to the value or condition of the property should not be considered accurate or factual. The pictures make reference to some parts of the property at the times that they were taken. The areas, dimensions and distances that are given are approximate and should be checked by the client. The images are computer generated and are just an approximate indication of the real appearance of the property; these may change at any time. The information with regards to the property may also change at any time.



For **more information** or  
to make an appointment

[apropertiespalma@aproperties.es](mailto:apropertiespalma@aproperties.es)  
Tel: 871 16 01 60  
[www.aproperties.es](http://www.aproperties.es)