

Campolivar

REF. VV1904020



## Magnificent house with terrace for sale in Campolivar

### Features

- ✓ Heating
- ✓ Terrace
- ✓ Backyard
- ✓ Pool
- ✓ Security
- ✓ Has parking

Price

**950,000 €**

Surface

**212 m<sup>2</sup>**

Plot surface

**2,000 m<sup>2</sup>**

Bedrooms

**6**

Bathrooms

**2**



In one of the best urbanizations of Valencia, 10 minutes by car from the city, and the airport, with all kinds of services and very well connected by highway and bypass, we find this magnificent detached villa, located in one of the best Campolivar areas. The house has 212 m<sup>2</sup> built according to cadastre, on a plot of 2,000 m<sup>2</sup>. The house is distributed on a comfortable floor with a lounge of 60 meters, with fireplace and exit to two terraces, kitchen with access to the dining room-gazebo. It has 6 rooms, with 2 bathrooms. In the superior floor there are three rooms with a bathroom and "the attic" a large room which is accessed by a wooden staircase. The house has, Paellero and recently reformed pool, everything perfectly integrated in a consolidated garden care.

The house was built in 1990, so although it is well maintained, it requires a small update.

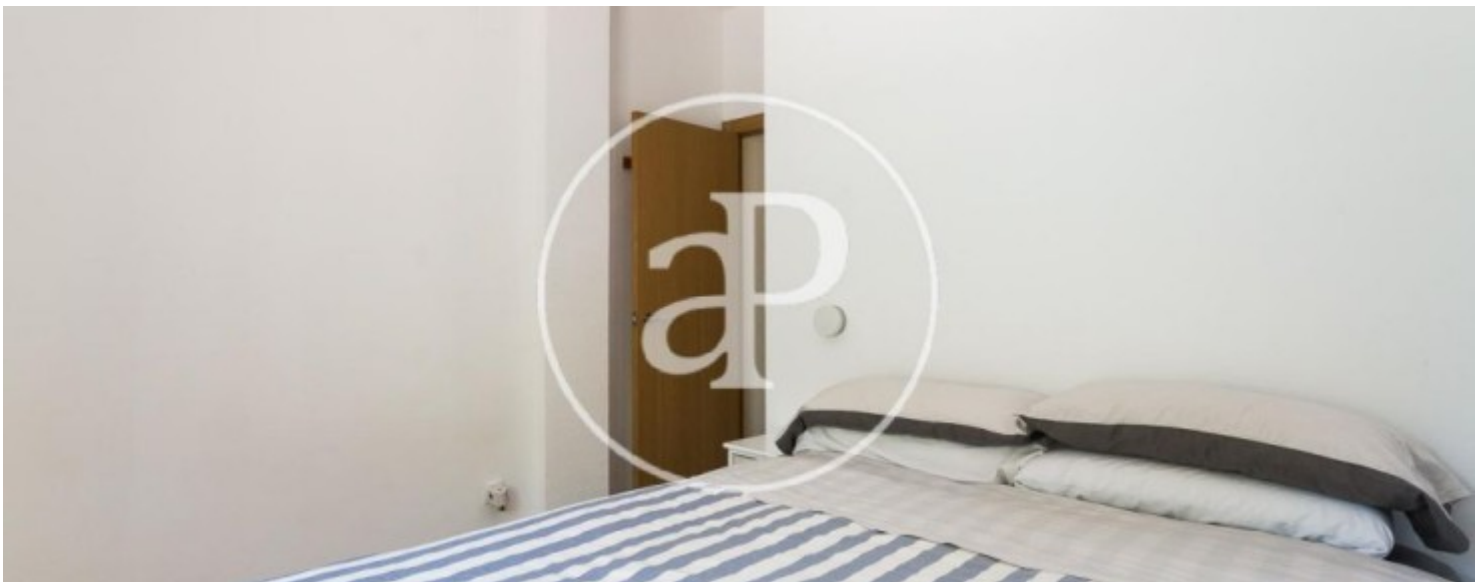
The living-dining room, is a diaphanous space of about 60 m<sup>2</sup> that enjoys up to 4 large windows facing south. A fireplace is located in the center of the room.

...

**Contact us,**  
we will be happy to assist you,  
to offer you more details and information.

Campolivar

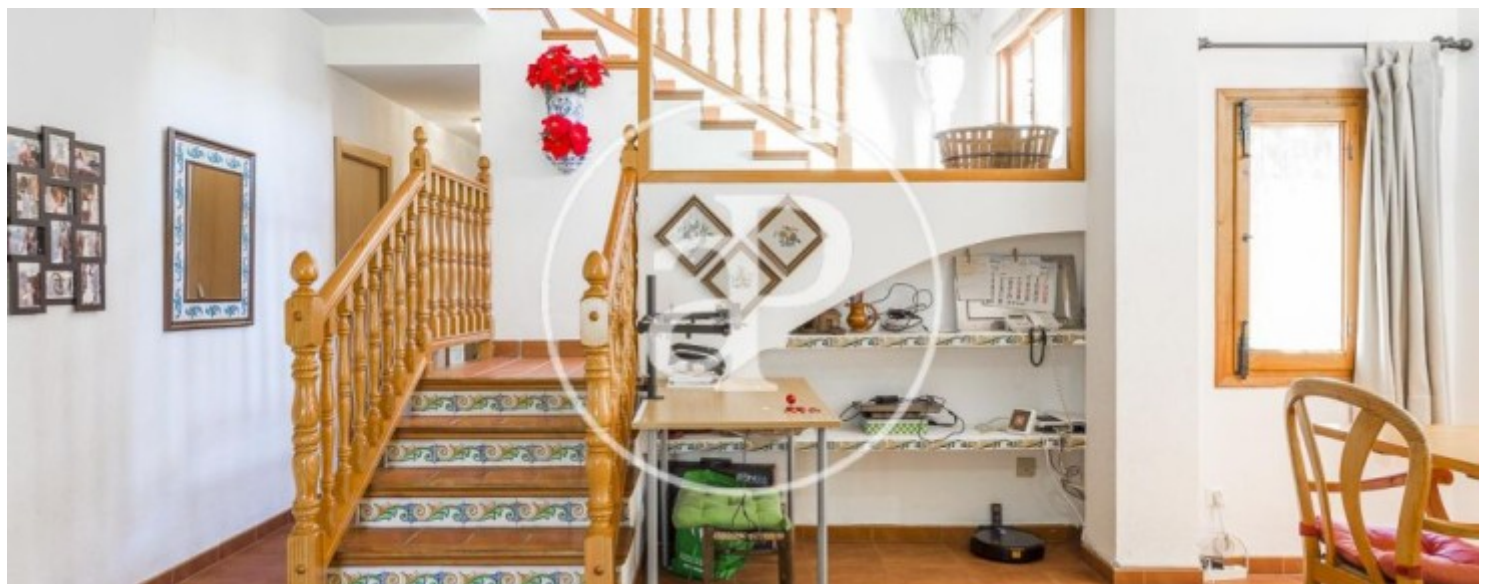
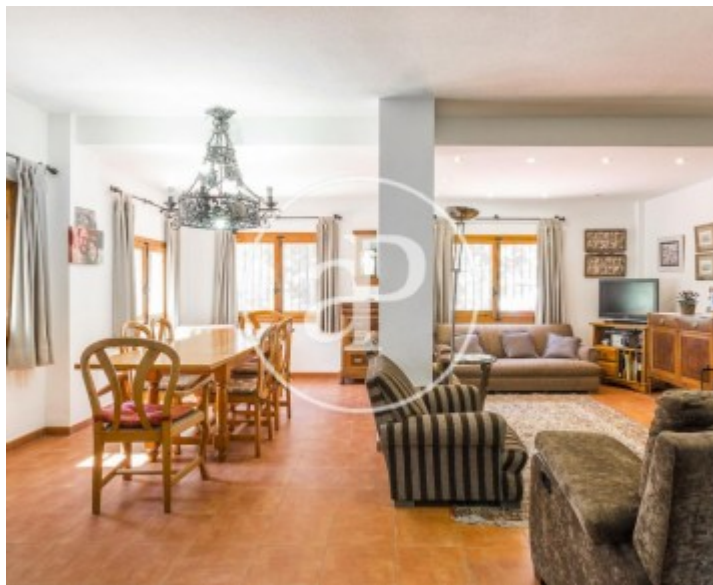
REF. VV1904020





Campolivar

REF. VV1904020





Campolivar

REF. VV1904020







**APROPERTIES**  
REAL ESTATE

Calle Mossen Femades 3, bajo dcha. Ed. Lauria  
46002 Valencia  
T. 96 128 59 65  
[www.aproperties.es](http://www.aproperties.es)

Campolivar

REF. VV1904020



The information about any property is not binding to any offer or contract. Any verbal or written declaration made by aProperties with regards to the value or condition of the property should not be considered accurate or factual. The pictures make reference to some parts of the property at the times that they were taken. The areas, dimensions and distances that are given are approximate and should be checked by the client. The images are computer generated and are just an approximate indication of the real appearance of the property; these may change at any time. The information with regards to the property may also change at any time.



For **more information** or  
to make an appointment

[apropertiesvalencia@aproperties.es](mailto:apropertiesvalencia@aproperties.es)  
Tel: 96 128 59 65  
[www.aproperties.es](http://www.aproperties.es)