

Campolivar

REF. VV1810020-2



Excellent villa in unique enclave in Campolivar

Features

- ✓ Views
- ✓ Terrace
- ✓ Pool
- ✓ Has parking
- ✓ Boxroom
- ✓ Backyard
- ✓ Security

Price

1,300,000 €

Surface

456 m²

Plot surface

2,008 m²

Bedrooms

5

Bathrooms

5



Excellent villa in unique enclave in Campolivar located next to the Park of Les Pedreres, a place protected by its great natural and historical value.

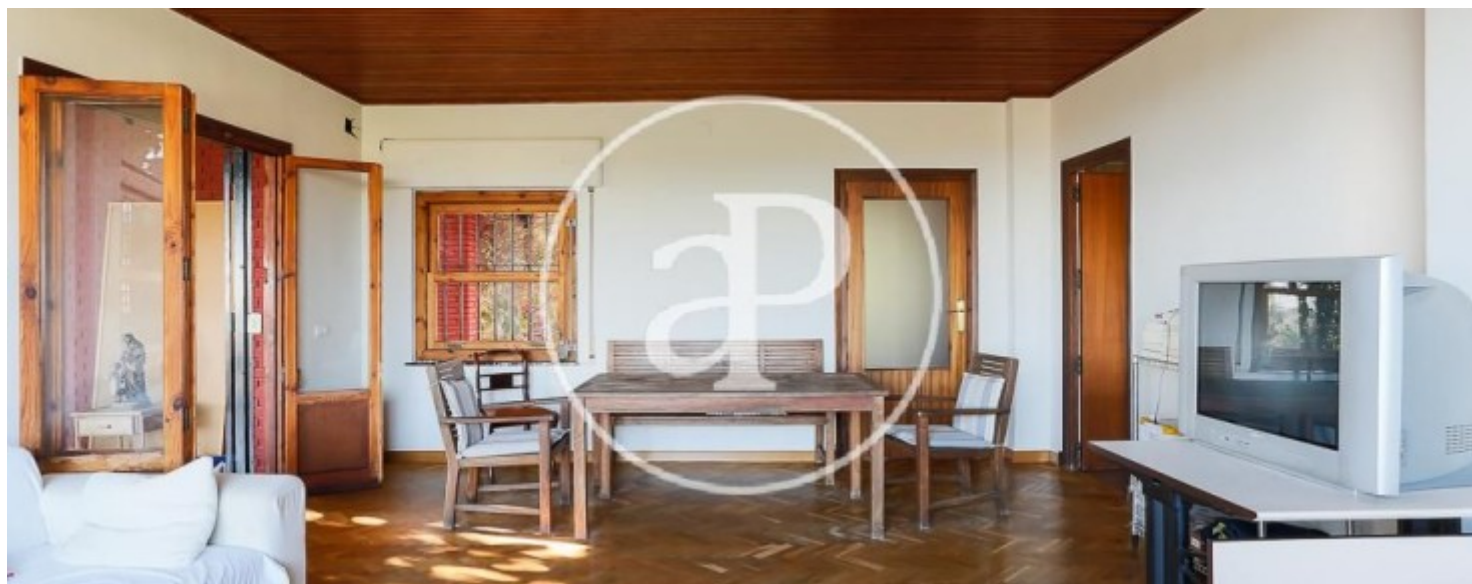
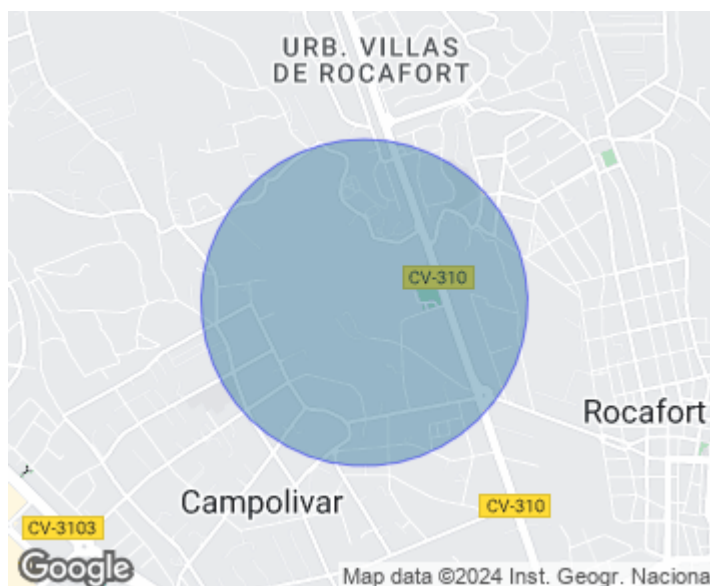
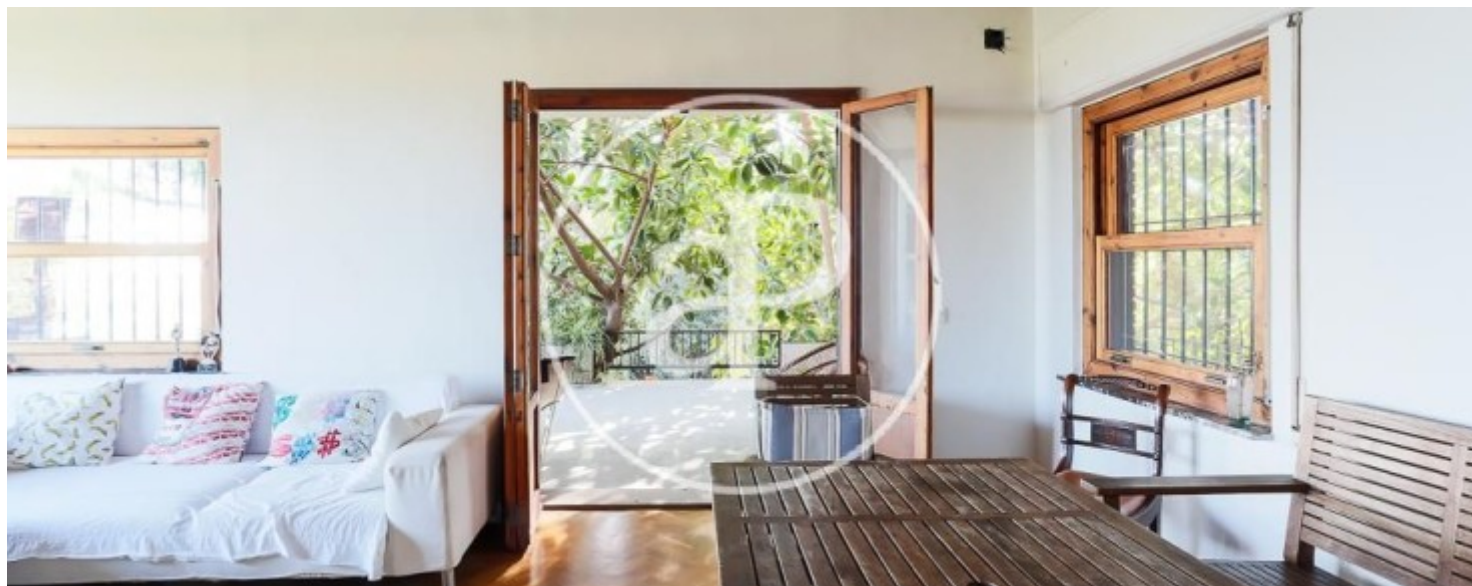
The house sits several meters above the Granite Quarry that forms the Park and enjoys spectacular views and exceptional microclimate. The entrance to the house connects in its outer area, on both sides, with terraces and leads to a hall with the staircase that goes up to the top floor and distributes the rooms on the ground floor. On the right we find the living room, with fireplace and Spanish oak parquet floor, where a large window with magnificent views of the Sierra Calderona and the sea line in the background,

which helps to connect the house with the place in which is framed and makes it the ideal meeting place of the house. Through the living room you access the terrace that borders the area east of the property and from where you can enjoy magnificent panoramic views. Next to the living room is the kitchen, also exterior, very bright and renovated. It has a modern bench, armariada white current and space for a table for daily use. The kitchen connects with a service area consisting of a room for laundry and a bedroom with bathroom in suite with shower, both exterior. On the opposite side of the...

Contact us,
we will be happy to assist you,
to offer you more details and information.

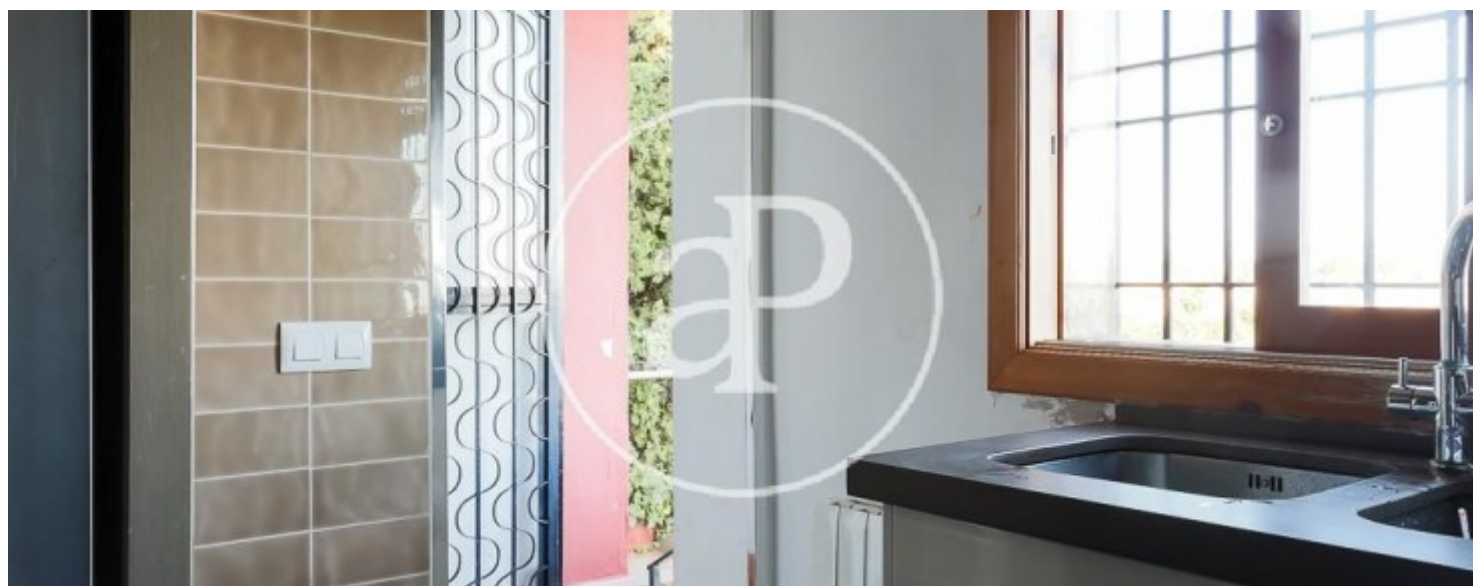
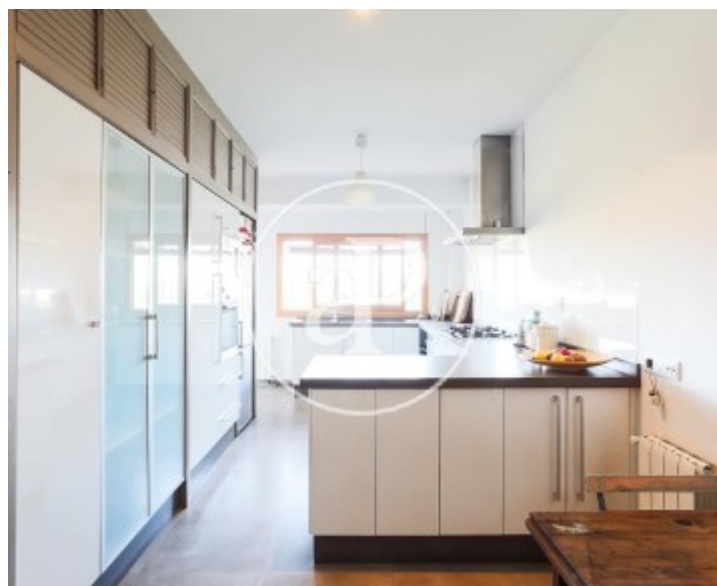
Campolivar

REF. VV1810020-2



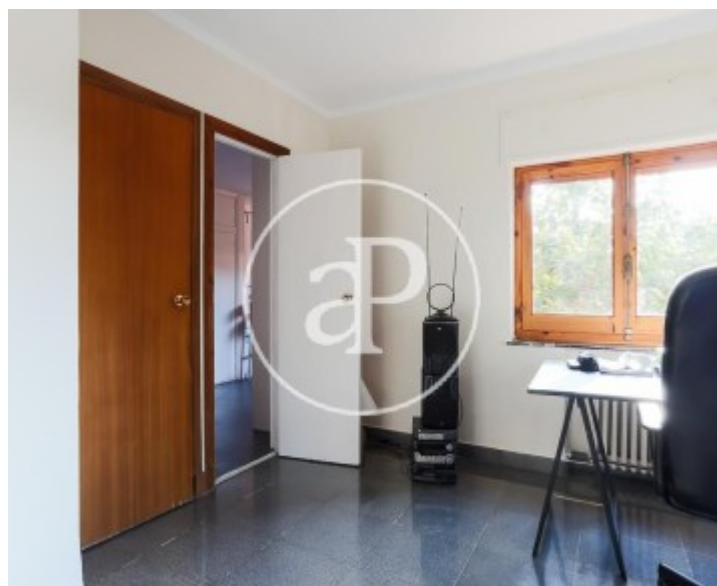
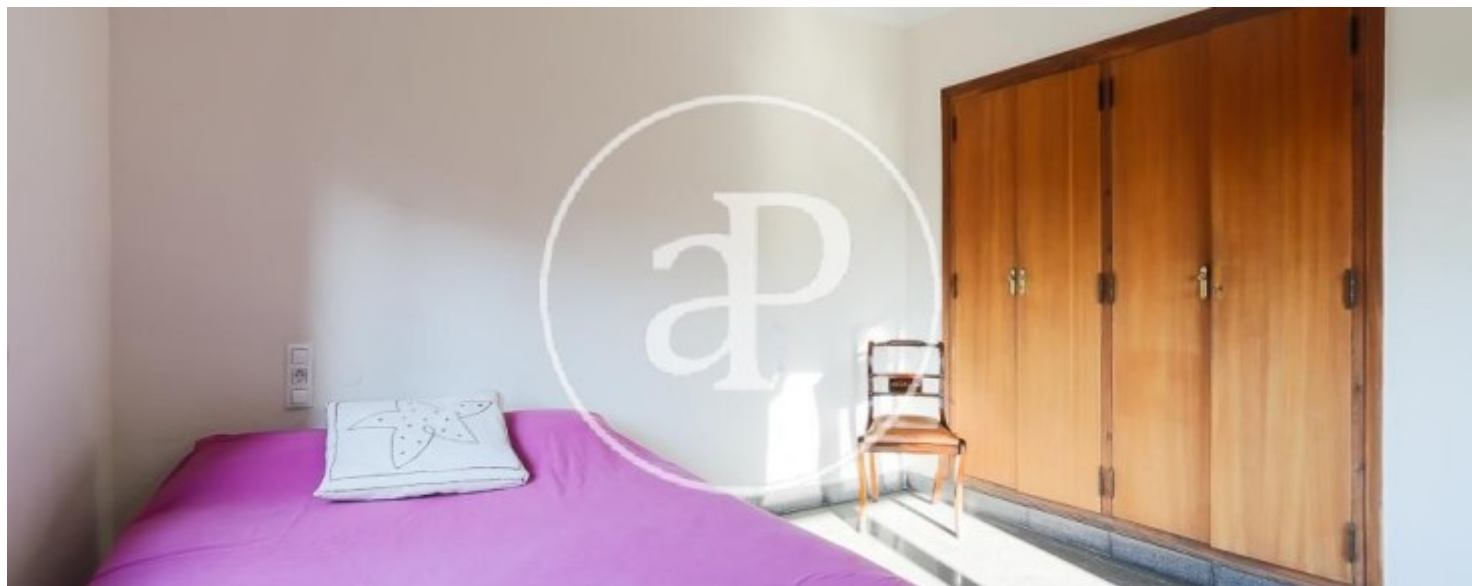
Campolivar

REF. VV1810020-2



Campolivar

REF. VV1810020-2



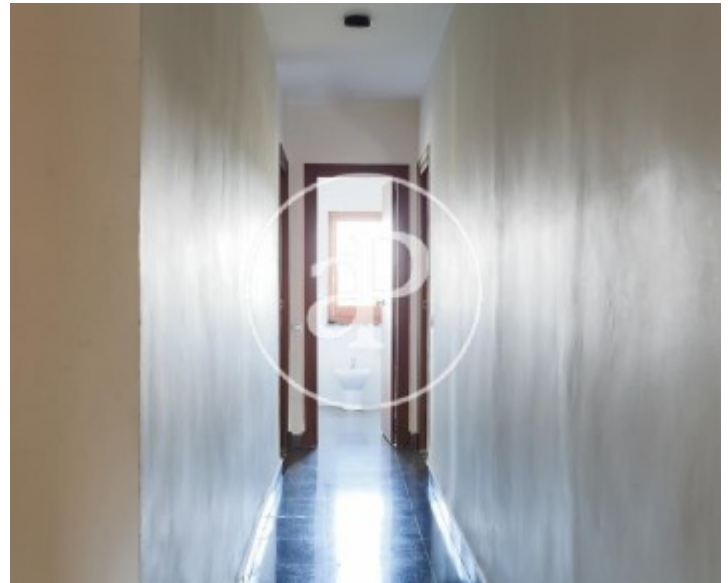
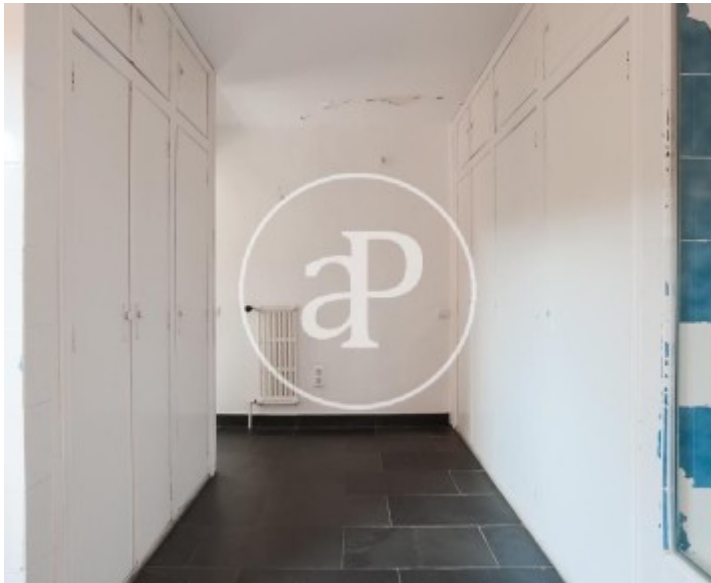


APROPERTIES
REAL ESTATE

Calle Mossen Femades 3, bajo dcha. Ed. Lauria
46002 Valencia
T. 96 128 59 65
www.aproperties.es

Campolivar

REF. VV1810020-2



The information about any property is not binding to any offer or contract. Any verbal or written declaration made by aProperties with regards to the value or condition of the property should not be considered accurate or factual. The pictures make reference to some parts of the property at the times that they were taken. The areas, dimensions and distances that are given are approximate and should be checked by the client. The images are computer generated and are just an approximate indication of the real appearance of the property; these may change at any time. The information with regards to the property may also change at any time.



For **more information** or
to make an appointment

apropertiesvalencia@aproperties.es
Tel: 96 128 59 65
www.aproperties.es