



Campolivar

REF. VV2510062

Manor Villa in the center of Campolivar

Features

- ✓ Views
- ✓ Boxroom
- ✓ Terrace
- ✓ Pool
- ✓ Heating
- ✓ AACC
- ✓ Backyard
- ✓ Has parking

Price

1,600,000 €

Surface

850 m²

Plot surface

1,850 m²

Bedrooms

7

Bathrooms

6



Wonderful Villa built in the 60s, which has maintained the charm of its construction in its update.

The house is divided into two floors plus a large and diaphanous semi-basement with windows and natural light. This exclusive Villa, completely independent, is located in the center of Campolivar 10 minutes from Valencia and with easy access to the airport and bypass, is equipped with all the necessities to live all year. The house is distributed over 2 floors, differentiating the ground floor, where there is a large office kitchen plus a section for laundry. On this floor, there is the day area with two different rooms and a large dining room all with access to the

outside through its large terraces. On this floor there is an independent compartment with two rooms and a bathroom designed to give independence from the rest of the house. On the first floor is the rest area. The completely independent master bedroom has an en suite bathroom with large fitted wardrobes. On this floor there are also three more bedrooms with fitted wardrobes and two bathrooms. The property has all the facilities for the good service of the occupants such as laundry, office cellar, garage, air conditioning and heating etc. In total the house has 6 bedrooms, 5 bathrooms and a...

Contact us,
we will be happy to assist you,
to offer you more details and information.

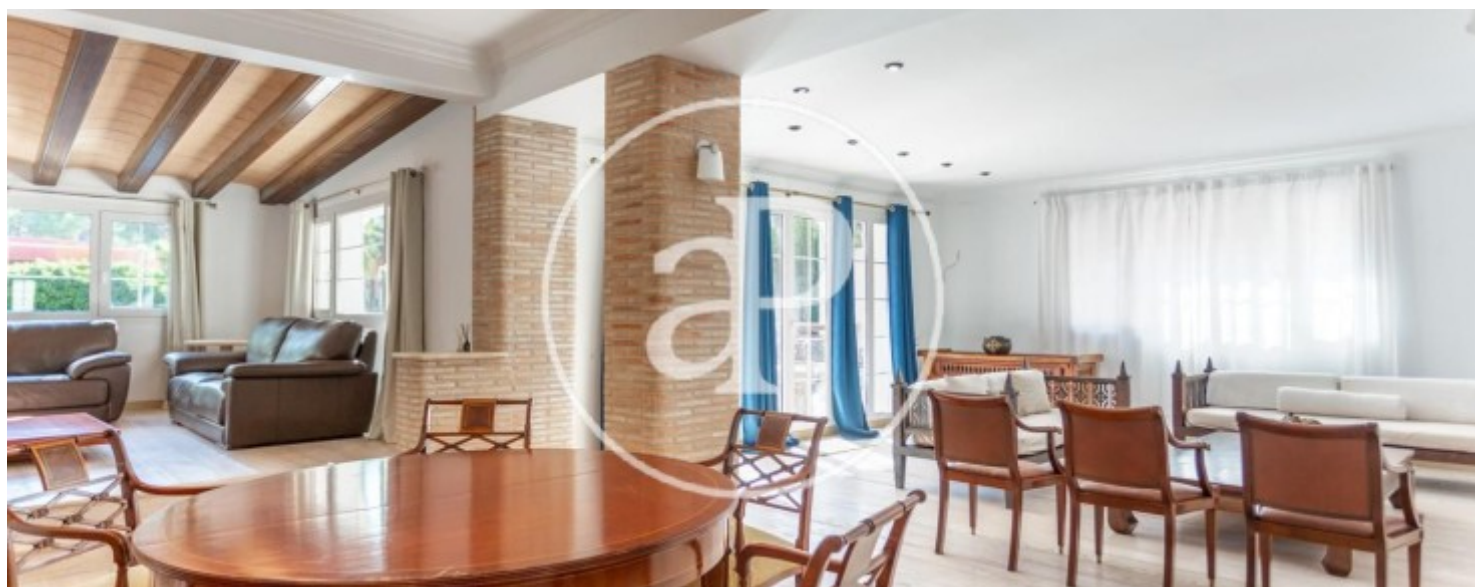
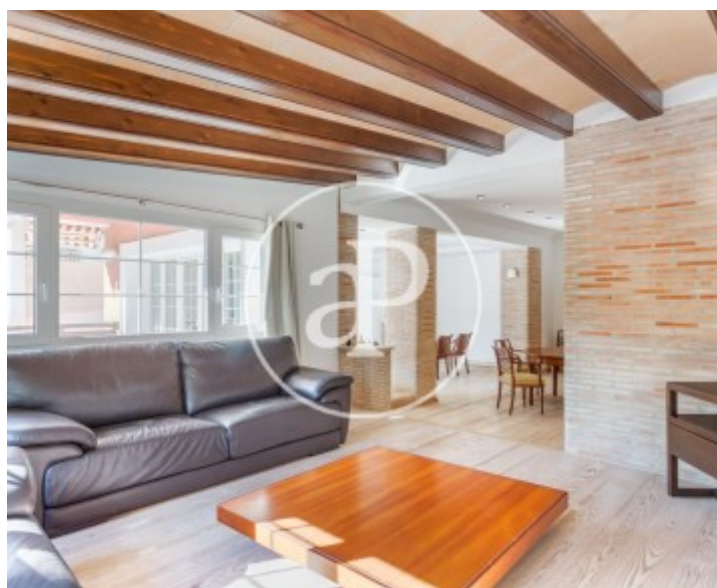
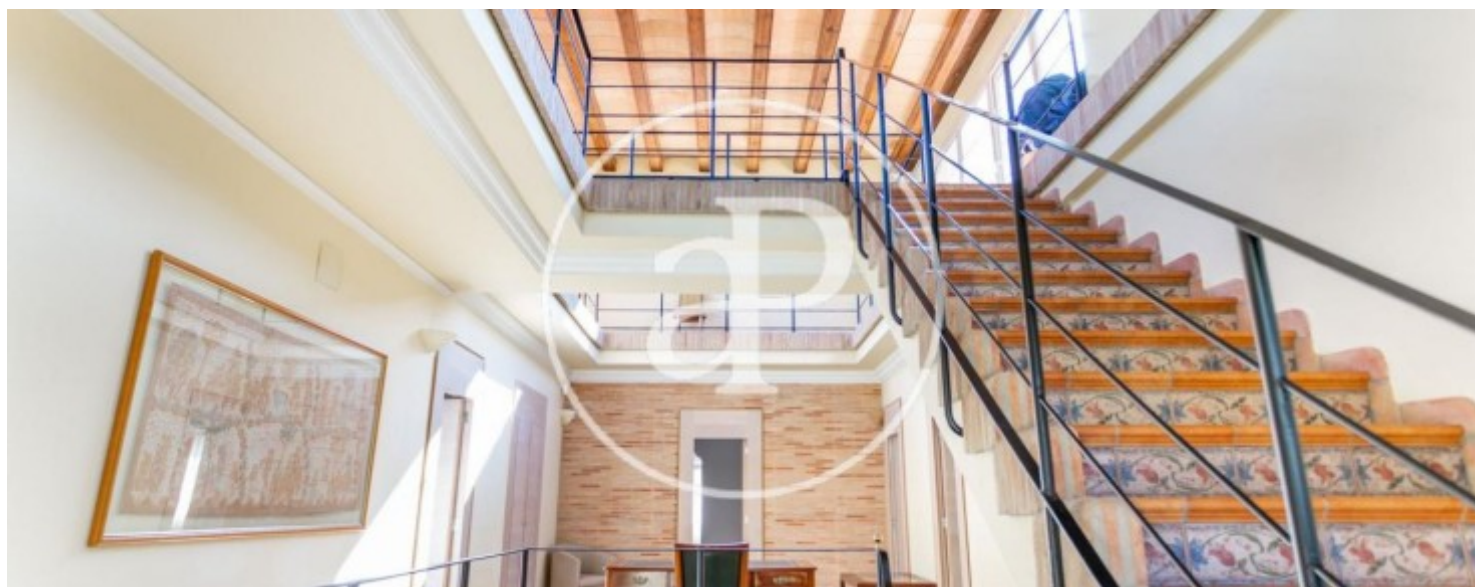
Campolivar

REF. VV2510062



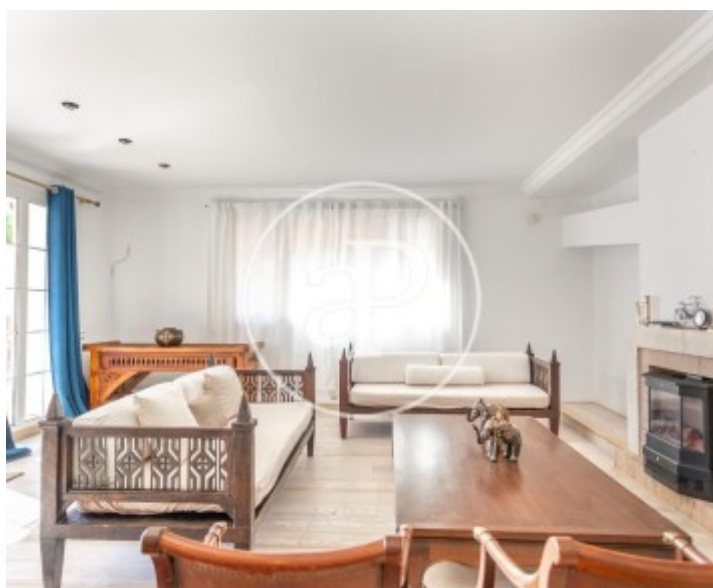
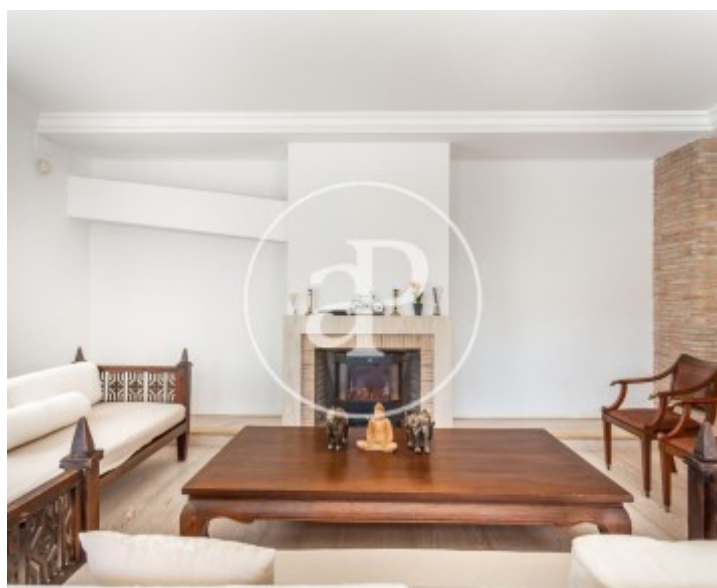
Campolivar

REF. VV2510062



Campolivar

REF. VV2510062



Campolivar

REF. VV2510062



The information about any property is not binding to any offer or contract. Any verbal or written declaration made by aProperties with regards to the value or condition of the property should not be considered accurate or factual. The pictures make reference to some parts of the property at the times that they were taken. The areas, dimensions and distances that are given are approximate and should be checked by the client. The images are computer generated and are just an approximate indication of the real appearance of the property; these may change at any time. The information with regards to the property may also change at any time.

For **more information** or
to make an appointment

apropertiesvalencia@aproperties.es
Tel: 96 128 59 65
www.aproperties.es