

(Santa Ponsa)

Ref: ONPM2306005



## *Exclusive high standing residential complex with incredible views in Santa Ponsa*

Santa Ponsa Living - Luxury development in one of the most exclusive and sought after areas of the island, in the southwest of Mallorca, in Santa Ponsa. We present you 24 high standing apartments with three or four bedrooms in modern design. The development consists of three blocks and is oriented to the northeast, on top of a hill, from where you can enjoy a wonderful view of the wide landscape, with mountains nearby and the beach only a few minutes' walk away. The communal areas include a beautiful garden with two communal swimming pools and a parking space in the basement. All apartments are spacious, comfortable and bright, finished with top quality materials, such as marble and underfloor heating, Miele appliances, aerothermics, porch - a large terrace or large garden. This will be your charming place of residence or for family holidays, with its variety of landscapes, its proximity to ports and golf courses and its many leisure possibilities. This new residential complex makes the most of its spaciousness with the best qualities. Can you imagine living here?

Calvià / Santa Ponsa  
Unit 3 B  
Completion Q2 2024

### **FEATURES**

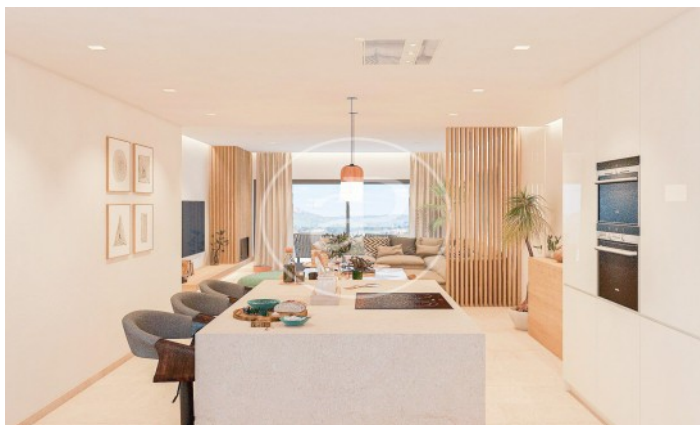
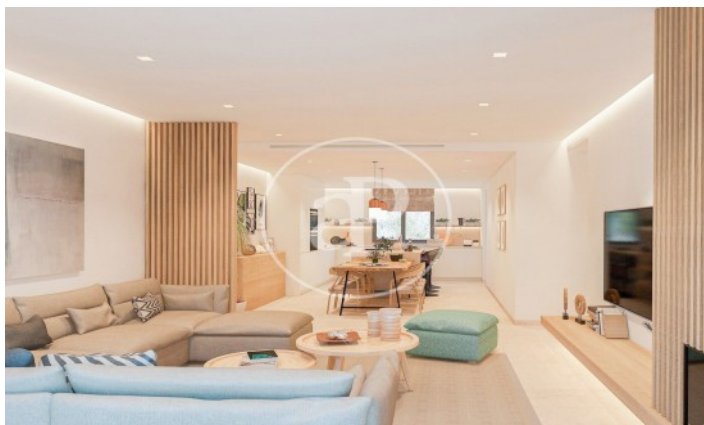
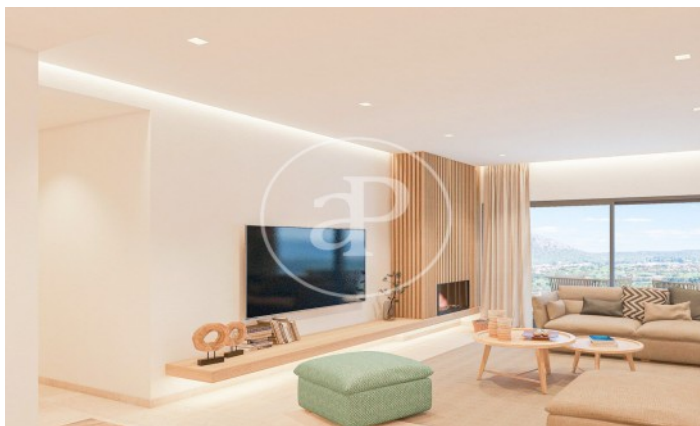
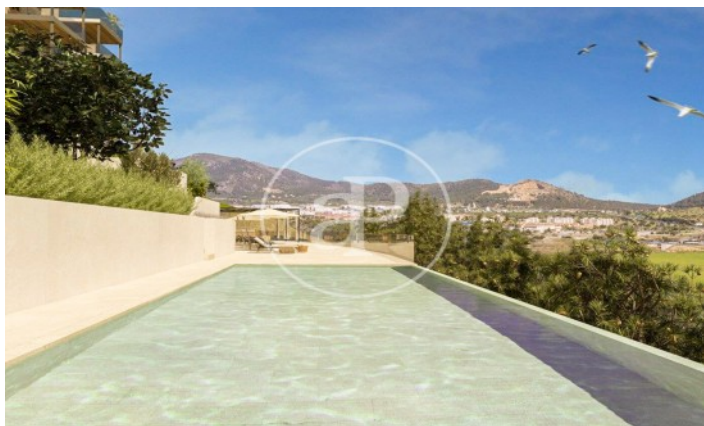
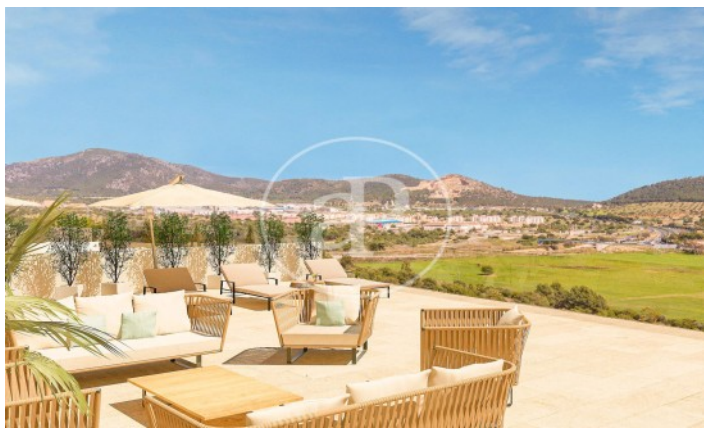
Surface 0 m<sup>2</sup>

- ✓ Views
- ✓ Heating
- ✓ AACC
- ✓ Pool
- ✓ Lift
- ✓ Has parking

Price 1,521,900 €

(Santa Ponsa)

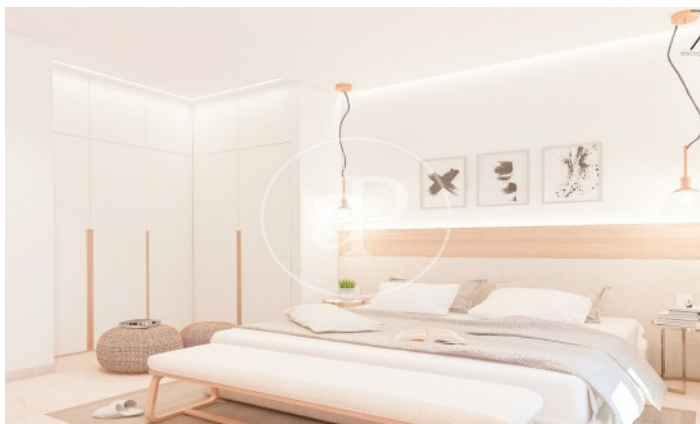
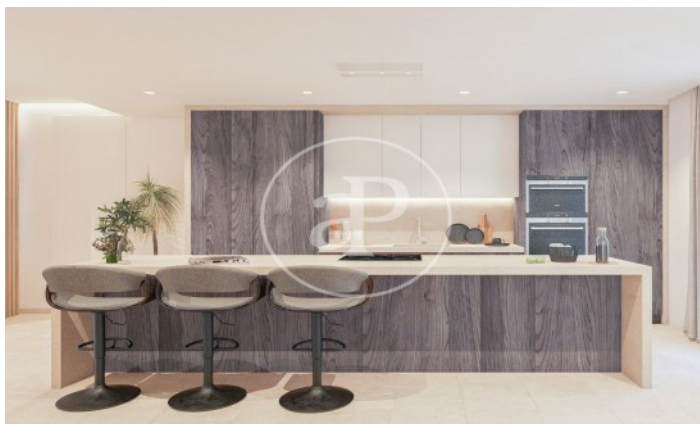
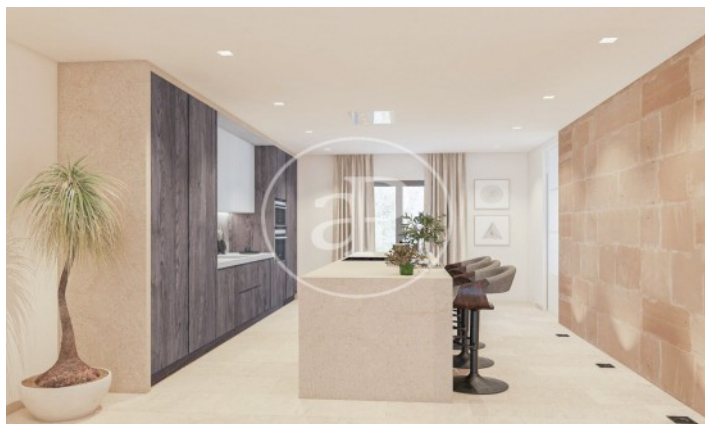
Ref: ONPM2306005





(Santa Ponsa)

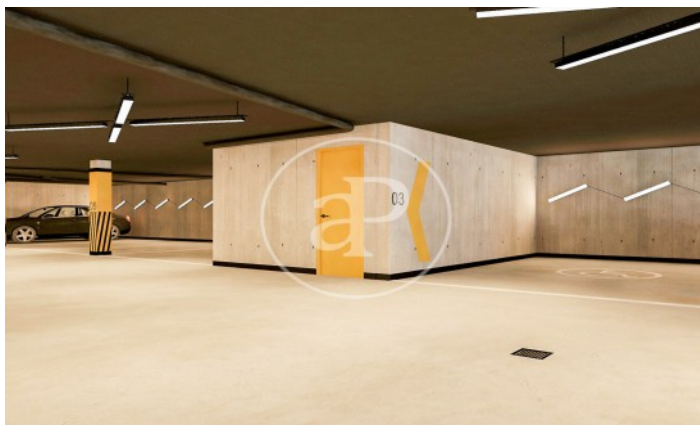
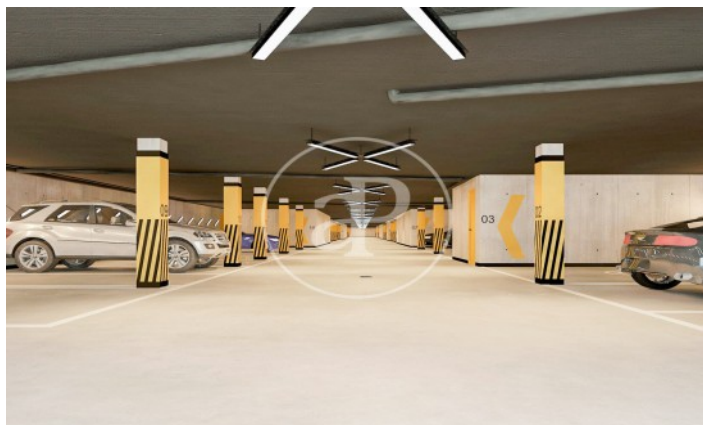
Ref: ONPM2306005





(Santa Ponsa)

Ref: ONPM2306005



The information about any property is not binding to any offer or contract. Any verbal or written declaration made by aProperties with regards to the value or condition of the property should not be considered accurate or factual. The pictures make reference to some parts of the property at the times that they were taken. The areas, dimensions and distances that are given are approximate and should be checked by the client. The images are computer generated and are just an approximate indication of the real appearance of the property; these may change at any time. The information with regards to the property may also change at any time.

Contact us today for more information or to arrange a viewing

Tel: 871 16 01 60

[apropertiespalma@aproperties.es](mailto:apropertiespalma@aproperties.es)

<https://www.aproperties.es>