

Palmanova, Calvià

REF. VPM2301047



Apartment for sale in the first row of the sea

Features

- ✓ Furnished
- ✓ Terrace
- ✓ Lift
- ✓ Has parking
- ✓ AACC
- ✓ Backyard
- ✓ Security

Price

670,000 €

Surface

85 m²

Bedrooms

2

Bathrooms

2



In the heart of the popular resort of Palmanova, just minutes from Palma city center and within walking distance of renowned private schools and tourist attractions such as Marineland, this elegant and intimate apartment enjoys a privileged location, in a building that has direct access to the beach. The approximately 80 sqm are ideally divided between a living area that includes a kitchen furnished and equipped with top quality materials, equipment and appliances (90 cm oven, remote control hood, dishwasher and osmosis tap) each space being well designed and used and a living room with access to the terrace with unobstructed views of the sea. The relaxation area is made up of 2 bedrooms with generous built-in wardrobes as storage space and two bathrooms. The master bedroom has sea views and access to

the terrace, its own bathroom and electric bed. The floor is made of top quality wood and all the finishes are of the best quality. The air conditioning system is designed for the entire apartment and the terrace is waterproofed and tiled with Porcelanosa tiles. Would you like to wake up every morning with this view?

Contact us,
we will be happy to assist you,
to offer you more details and information.

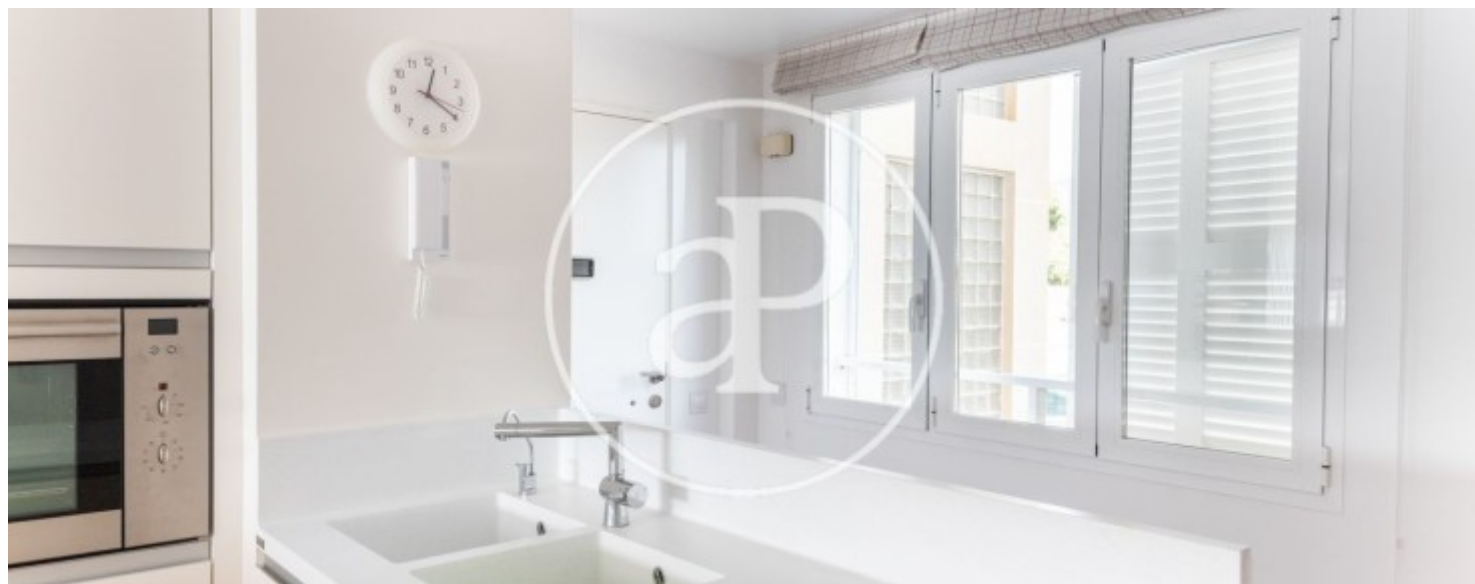
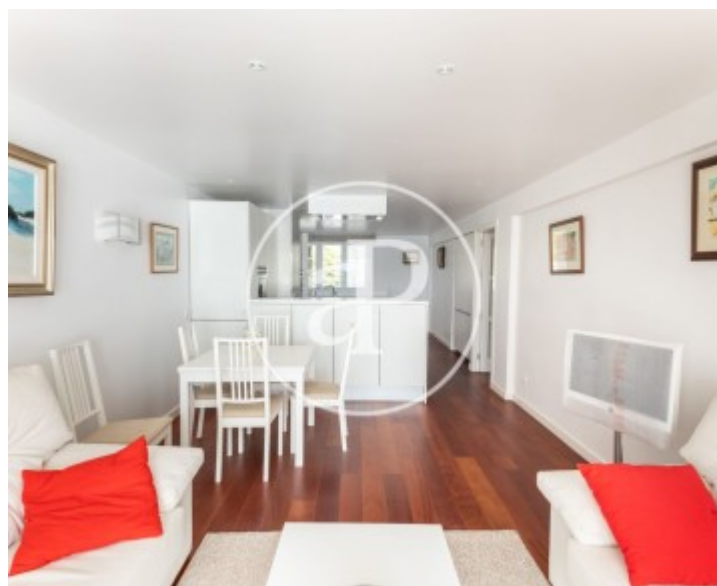
Palmanova, Calvià

REF. VPM2301047



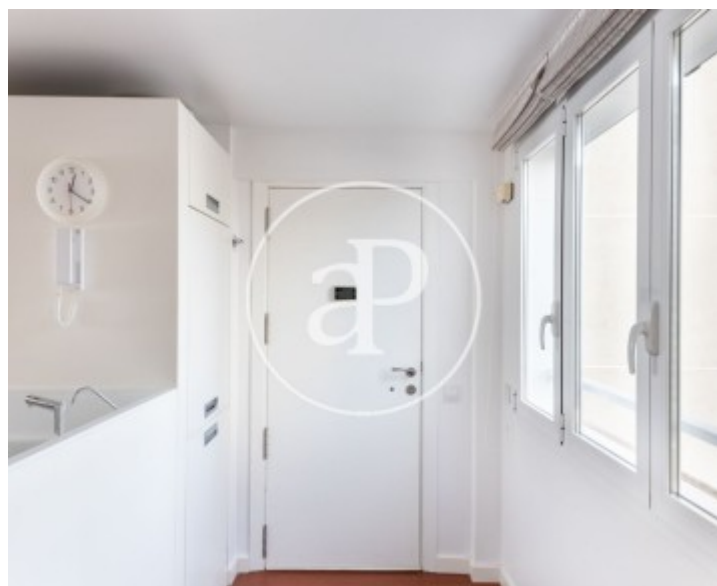
Palmanova, Calvià

REF. VPM2301047



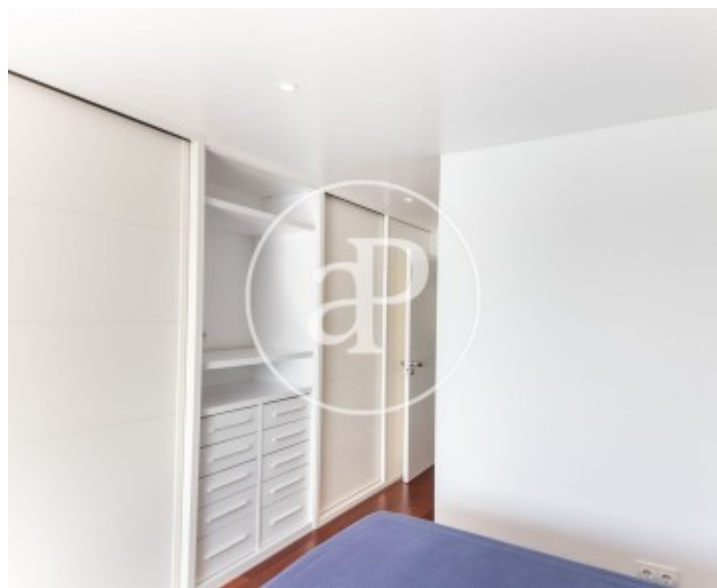
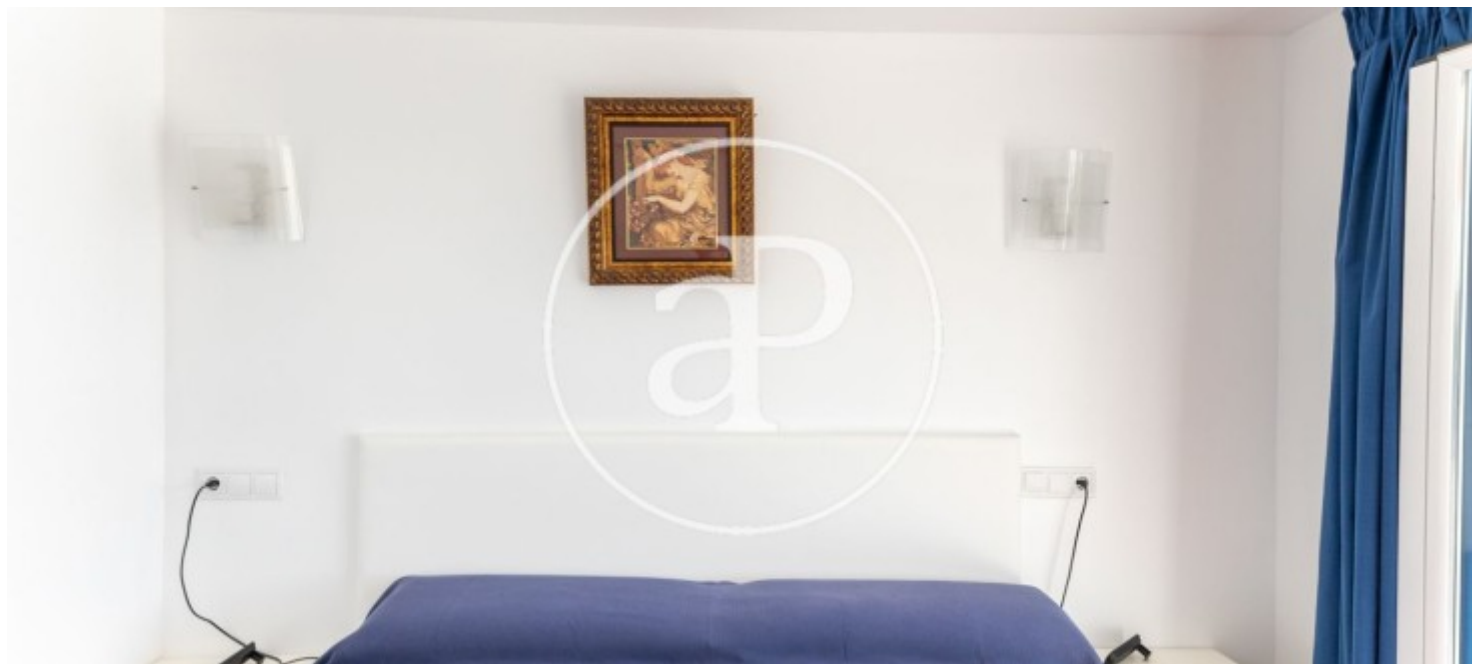
Palmanova, Calvià

REF. VPM2301047



Palmanova, Calvià

REF. VPM2301047



The information about any property is not binding to any offer or contract. Any verbal or written declaration made by aProperties with regards to the value or condition of the property should not be considered accurate or factual. The pictures make reference to some parts of the property at the times that they were taken. The areas, dimensions and distances that are given are approximate and should be checked by the client. The images are computer generated and are just an approximate indication of the real appearance of the property; these may change at any time. The information with regards to the property may also change at any time.



For **more information** or
to make an appointment

apropertiespalma@aproperties.es
Tel: 871 16 01 60
www.aproperties.es