



Palmanova, Calvià

REF. VPM2205035

Apartment with sea views for sale in Palmanova

Features

- ✓ Views
- ✓ Furnished
- ✓ Terrace

Surface

105 m²

Bedrooms

3

Bathrooms

2

Price

350,000 €



This charming apartment situated in a quiet residential area of PALMANOVA, only two minutes walking distance to the magnificent beach, offers incredible SEA VIEWS combined with the green surroundings.

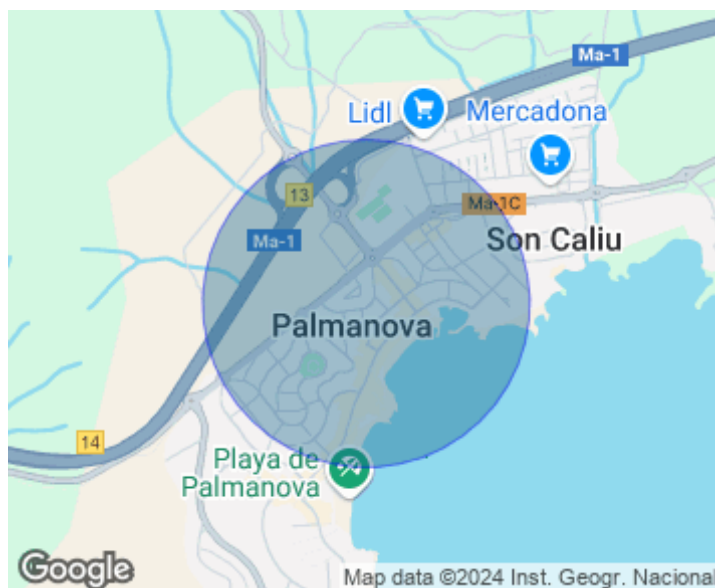
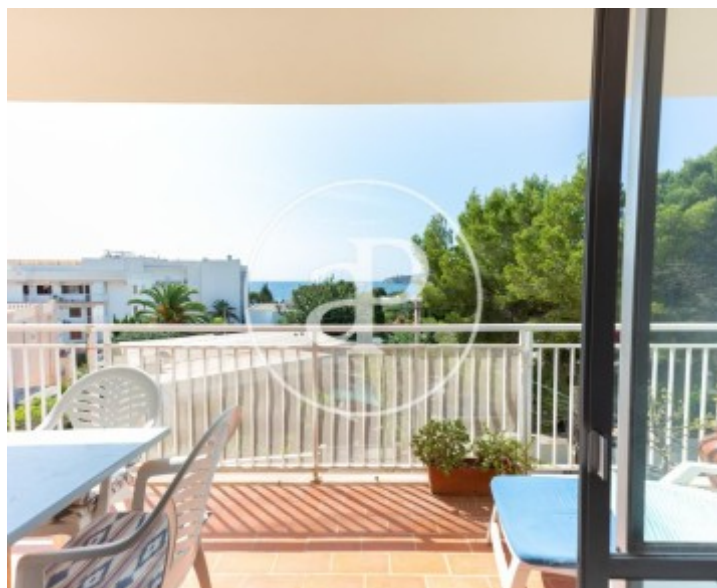
The apartment is located on the 2nd floor of a small building without lift. The community consists of seven neighbours of different nationalities. Its 75 sqm living area are efficiently distributed: behind the entrance door, the living and dining room has access to the front terrace towards the stunning blue of the sea. Next to this day area there is a double bedroom also with access to this terrace. Left of the entrance, the hallway leads to two double bedrooms on

one side and a full bathroom. Both bedrooms share a side terrace with unobstructed views. At the end of the hallway there is a guest toilet and to the left, the entrance to the kitchen, also connected to a third terrace at the back of the property facing the mountains. With THREE TERRACES totalling 30 sqm to enjoy the surroundings, this cosy summer home is well worth a visit, so don't hesitate to get in touch to arrange a viewing! Can you imagine living here? We look forward your call!

Contact us,
we will be happy to assist you,
to offer you more details and information.

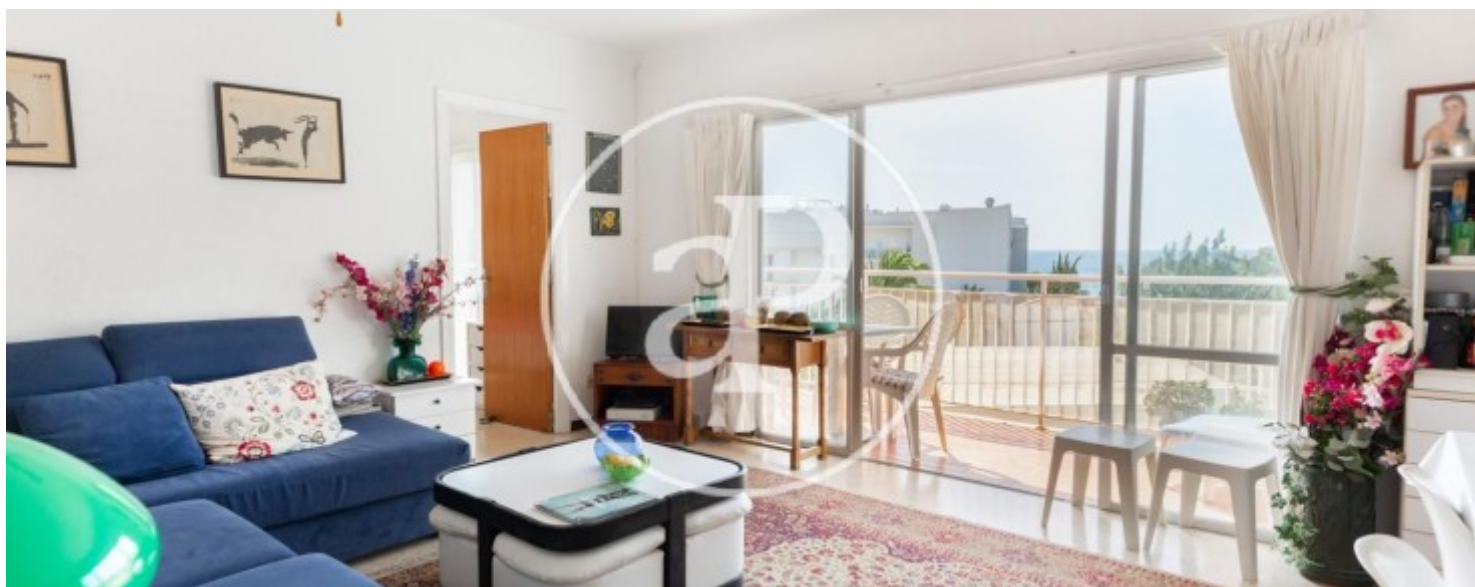
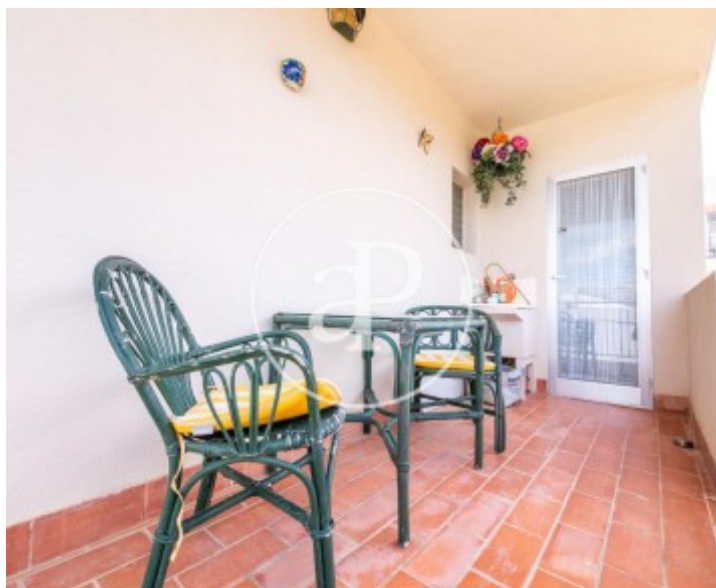
Palmanova, Calvià

REF. VPM2205035



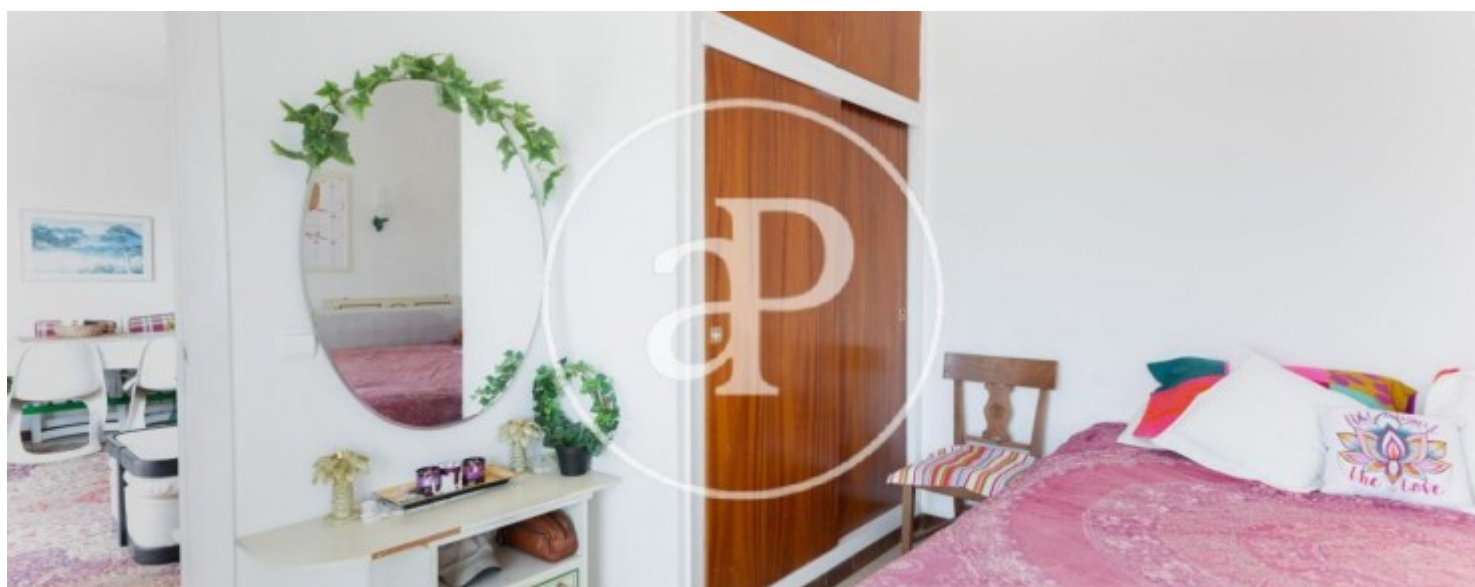
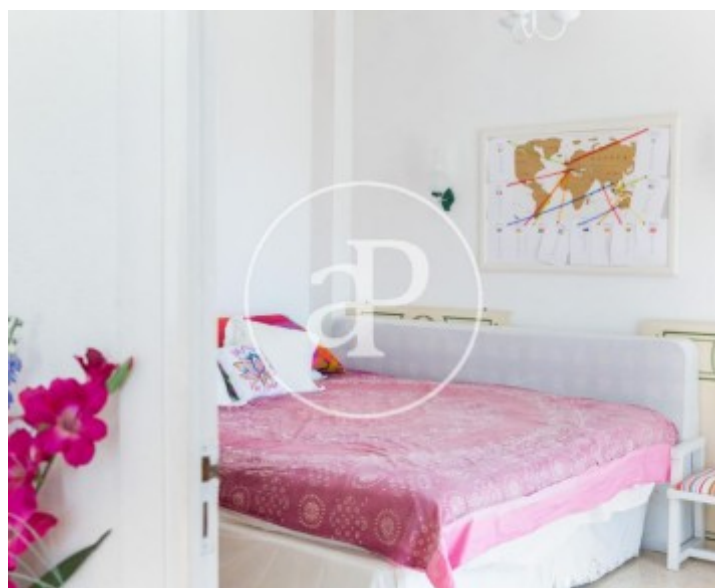
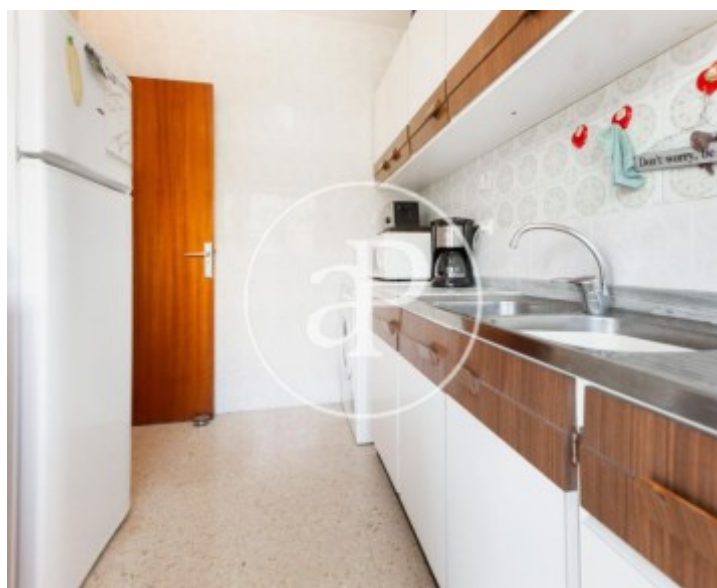
Palmanova, Calvià

REF. VPM2205035



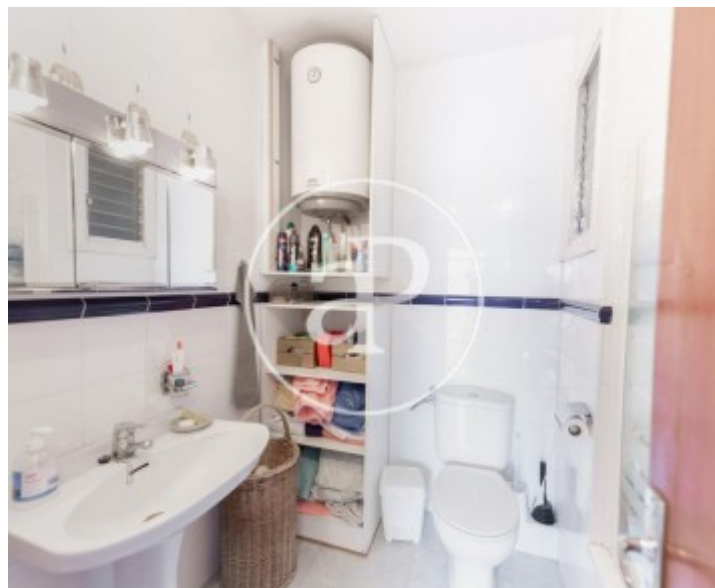
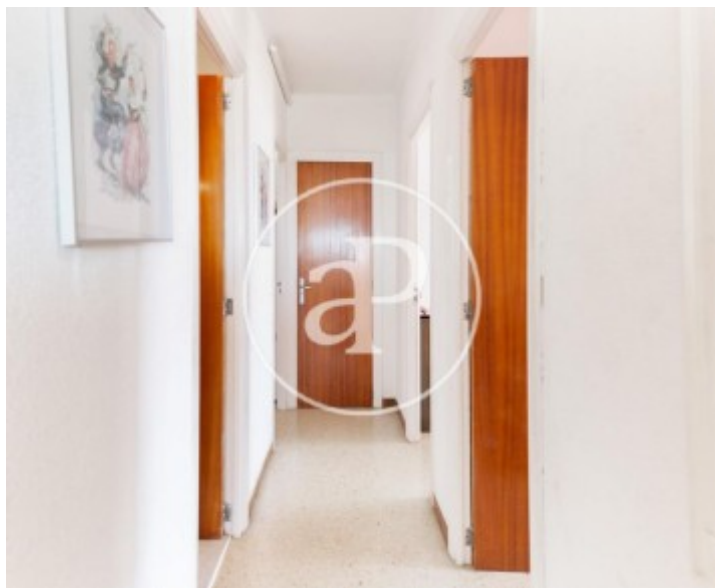
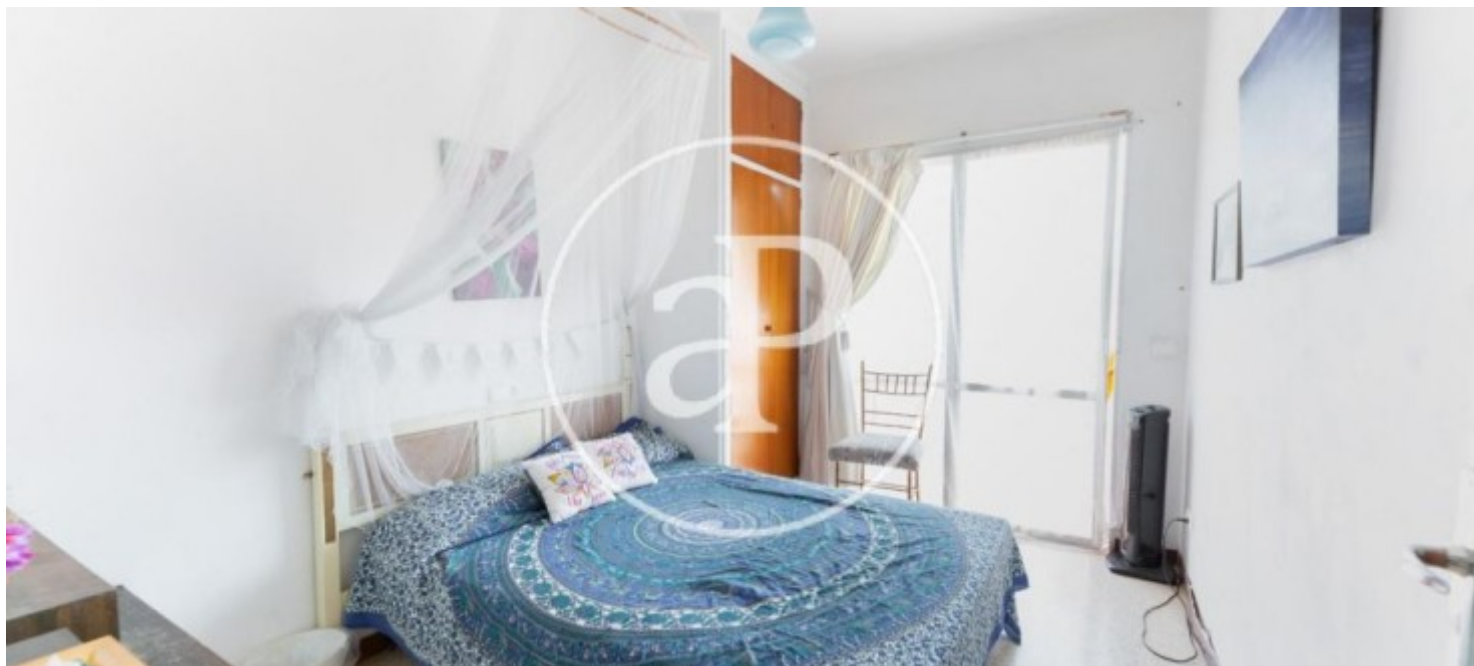
Palmanova, Calvià

REF. VPM2205035



Palmanova, Calvià

REF. VPM2205035



The information about any property is not binding to any offer or contract. Any verbal or written declaration made by aProperties with regards to the value or condition of the property should not be considered accurate or factual. The pictures make reference to some parts of the property at the times that they were taken. The areas, dimensions and distances that are given are approximate and should be checked by the client. The images are computer generated and are just an approximate indication of the real appearance of the property; these may change at any time. The information with regards to the property may also change at any time.

For **more information** or
to make an appointment

apropertiespalma@aproperties.es
Tel: 871 16 01 60
www.aproperties.es