

Illetes, Calvià

REF. APMS2605016

Apartment for rent in Illetes

Features

- ✓ Views
- ✓ Heating
- ✓ Furnished
- ✓ AACC
- ✓ Terrace
- ✓ Pool
- ✓ Lift
- ✓ Has parking

Surface

120 m²

Bedrooms

2

Bathrooms

2

Price

2,300 €



11 months rent.

In the sought after area of Illetas we find this furnished flat of 120sqm and 70sqm of terrace in perfect condition with sea views. Very quiet complex with communal pool. Access to the property through an entrance hall leading to the living-dining room with plenty of natural light and access to a terrace with unbeatable sea views. The day area is completed by a fully fitted and equipped independent kitchen. The night area consists of two double bedrooms with fitted wardrobes and two bathrooms with bathtub, one of them en suite and direct access to the terrace. Additional features include marble floors, ducted air-conditioning and

heating, double glazed windows, an underground parking space and a community pool with direct access from the terrace. Pets are allowed. All expenses except electricity are included in the rental price. The locality is characterized for being an exclusive, residential and quiet area, where you can enjoy spectacular beaches and views. It is only 15 minutes away from the centre of Palma and the airport. It has prestigious international schools, the Nautical Club of Cala Nova and Real Golf de Bendinat. The rent is for 11 months, possibility to rent it for less months (consult...

Contact us,
we will be happy to assist you,
to offer you more details and information.

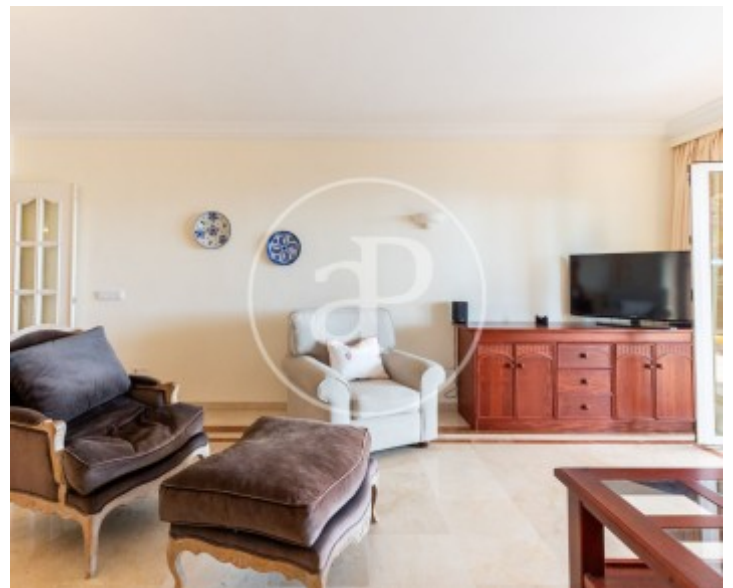
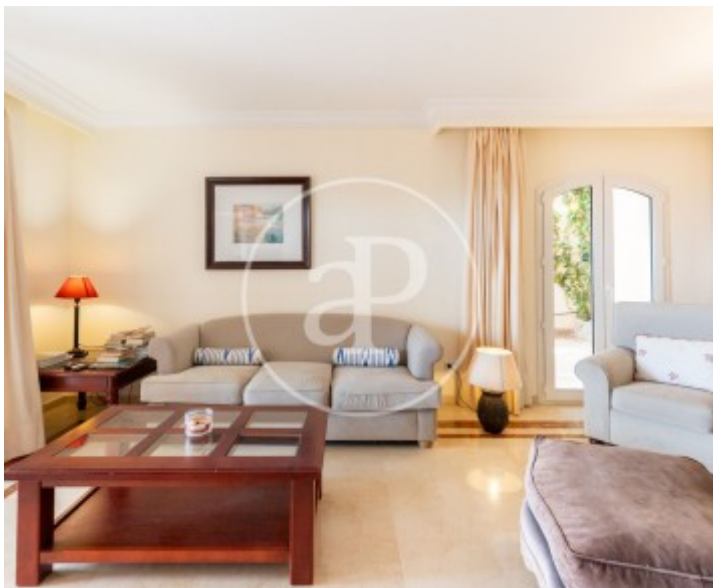
Illetes, Calvià

REF. APMS2605016



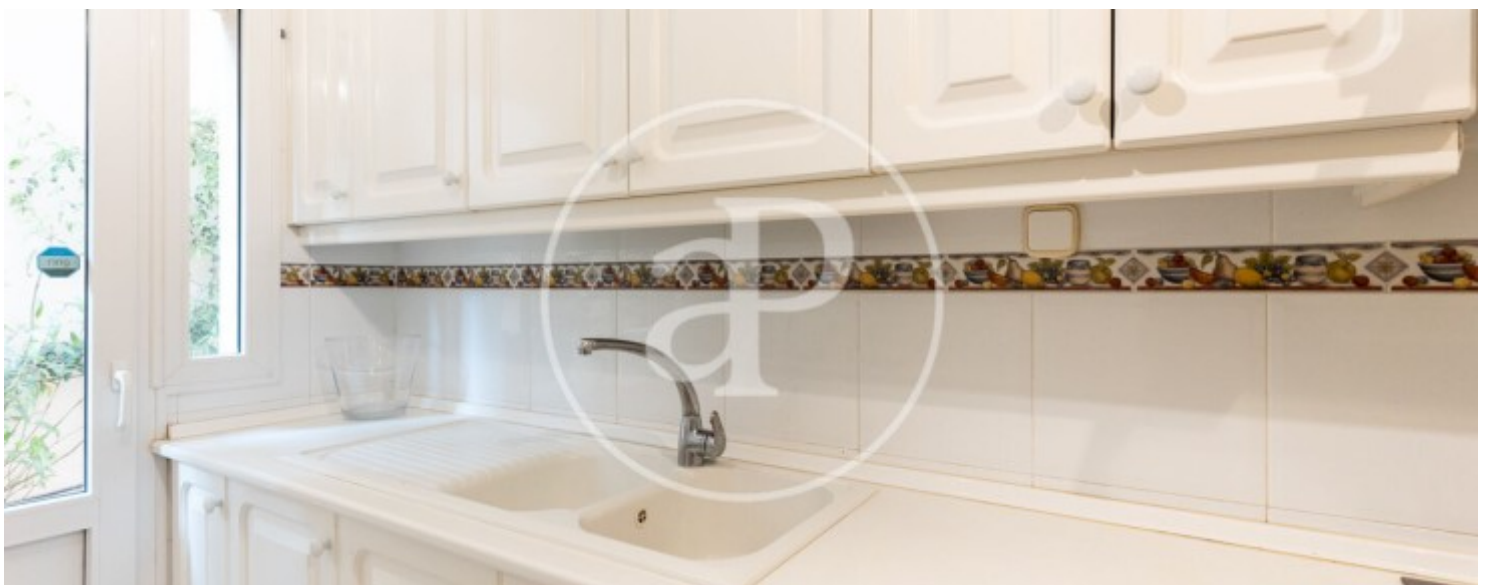
Illetes, Calvià

REF. APMS2605016



Illetes, Calvià

REF. APMS2605016



Illetes, Calvià

REF. APMS2605016



The information about any property is not binding to any offer or contract. Any verbal or written declaration made by aProperties with regards to the value or condition of the property should not be considered accurate or factual. The pictures make reference to some parts of the property at the times that they were taken. The areas, dimensions and distances that are given are approximate and should be checked by the client. The images are computer generated and are just an approximate indication of the real appearance of the property; these may change at any time. The information with regards to the property may also change at any time.

For **more information** or
to make an appointment

apropertiespalma@aproperties.es
Tel: 871 16 01 60
www.aproperties.es