

Costa de la Calma, Calvià

REF. VPM2311020



House for sale in Costa de la Calma

Features

- ✓ Boxroom
- ✓ Terrace
- ✓ Has parking

Price

1,100,000 €

Surface

176 m²

Bedrooms

2

Bathrooms

2



We present to you this charming detached villa located in the prestigious area of Costa de la Calma.

With unique features that include a garage, panoramic views of the mountains and the town, and an incredible proximity to the sea, this property offers you the lifestyle you have always wanted. Top floor, with a living area of 178m², all of its rooms are exterior, thanks to its orientation and unobstructed views enjoying natural light throughout the day. Entrance hall, fully fitted kitchen with access to separate utility room, bright living/dining room with fireplace and two double bedrooms. The master bedroom has a large en-suite bathroom and a large separate

dressling room. The second bedroom has a built-in wardrobe and a complete bathroom with shower annex. Access from the living-dining room to an incredible porch and terrace of 55 m², facing west, with automatic awning installed and partially glazed spaces, rest area and dining area with barbecue. Exterior carpentry aluminium/climalit, Aluminium shutters, Interior carpentry wood, Stoneware floors, Air conditioning hot/cold in living room and bedroom, Central heating by radiators, City gas, Electricity and plumbing renovated. Possibility of terrace-solarium on the roof of the...

Contact us,
we will be happy to assist you,
to offer you more details and information.

Costa de la Calma, Calvià

REF. VPM2311020



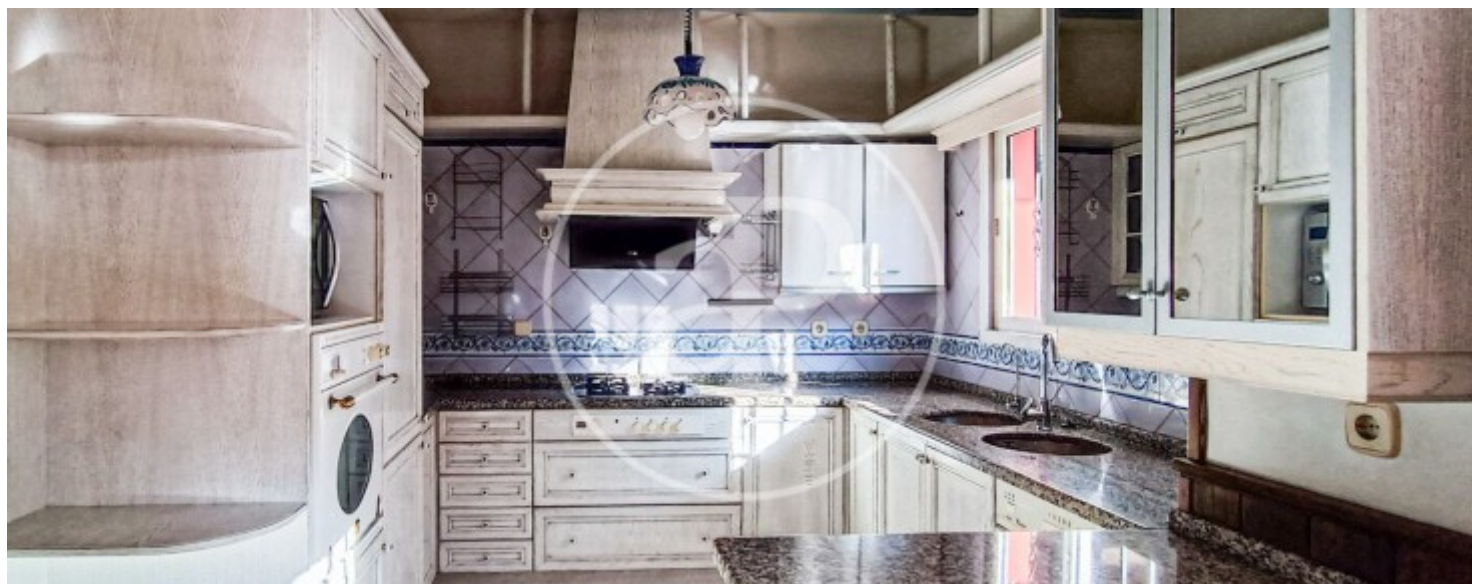
Costa de la Calma, Calvià

REF. VPM2311020



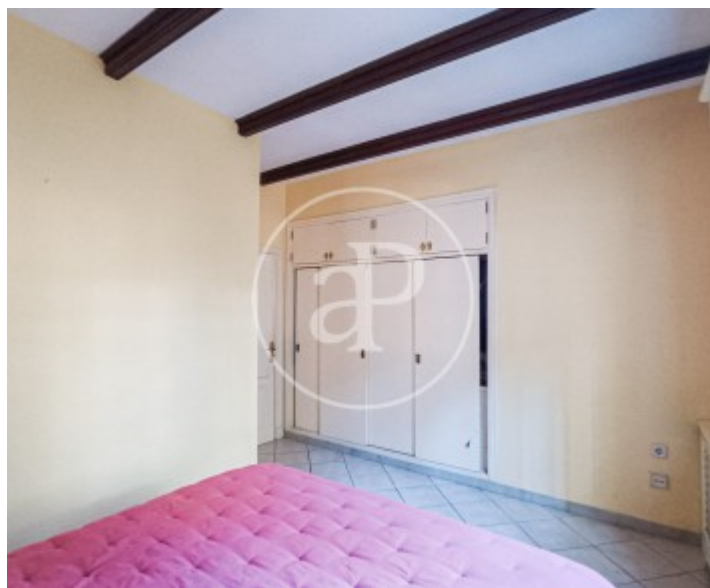
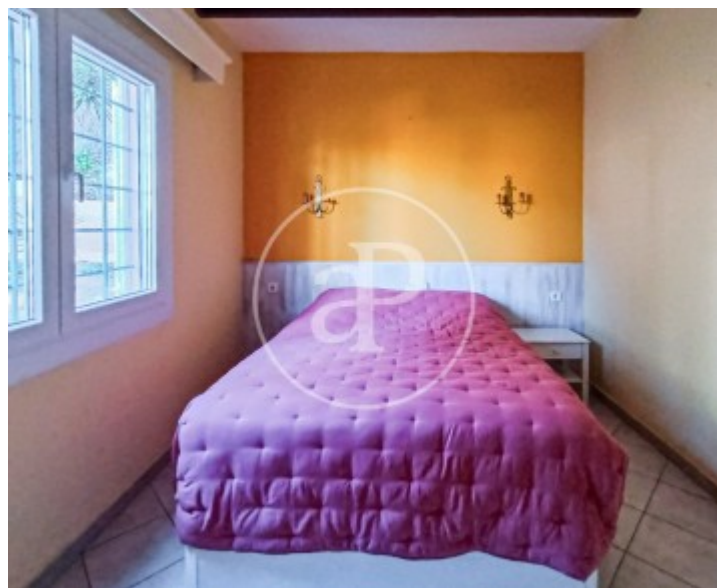
Costa de la Calma, Calvià

REF. VPM2311020



Costa de la Calma, Calvià

REF. VPM2311020



The information about any property is not binding to any offer or contract. Any verbal or written declaration made by aProperties with regards to the value or condition of the property should not be considered accurate or factual. The pictures make reference to some parts of the property at the times that they were taken. The areas, dimensions and distances that are given are approximate and should be checked by the client. The images are computer generated and are just an approximate indication of the real appearance of the property; these may change at any time. The information with regards to the property may also change at any time.



For **more information** or
to make an appointment

apropertiespalma@aproperties.es
Tel: 871 16 01 60
www.aproperties.es