

Cas Català, Calvià

REF. APMS2512009

Flat for rent in Cas Català

Features

- ✓ Views
- ✓ Furnished
- ✓ Terrace
- ✓ Pool
- ✓ Lift
- ✓ Concierge
- ✓ Heating
- ✓ AACC
- ✓ Backyard
- ✓ Gym
- ✓ Security
- ✓ Has parking

Surface

190 m²

Bedrooms

3

Bathrooms

2



Price

4,500 €

In the area of Cas Català we find this luxury flat of 250 sqm and 40 sqm of terrace with beautiful views.

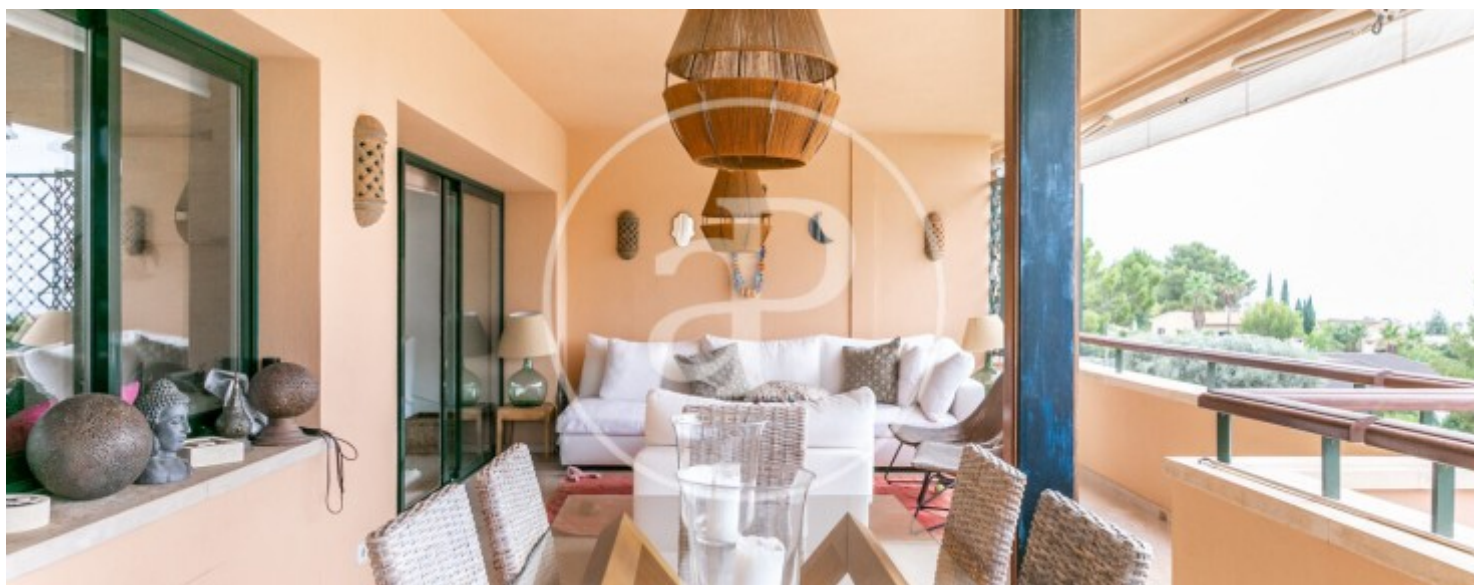
From the front door there is an entrance hall, which leads to a spacious and bright living-dining room tastefully decorated. The living room has access to a terrace with views of the sea and the Bendinat Castle. The kitchen is open plan and integrated to the living room, furnished and equipped with high end appliances, separate service entrance and laundry area. In the night area there are three double bedrooms with built-in wardrobes and two bathrooms. The master bedroom, very spacious, has direct access to the terrace and an open bathroom with

shower. The urbanization has very well kept communal gardens, outdoor swimming pool, heated pool, sauna and gymnasium. It has a large underground parking space, concierge service and video surveillance 24 hours a day. Within 5 minutes by car you can enjoy the sailing club Calanova and different beaches located in Illetas. The rental price includes the community expenses and IBI. The rest of the utilities will be paid by the tenant. Can you imagine living here, we are waiting for your call!

Contact us,
we will be happy to assist you,
to offer you more details and information.

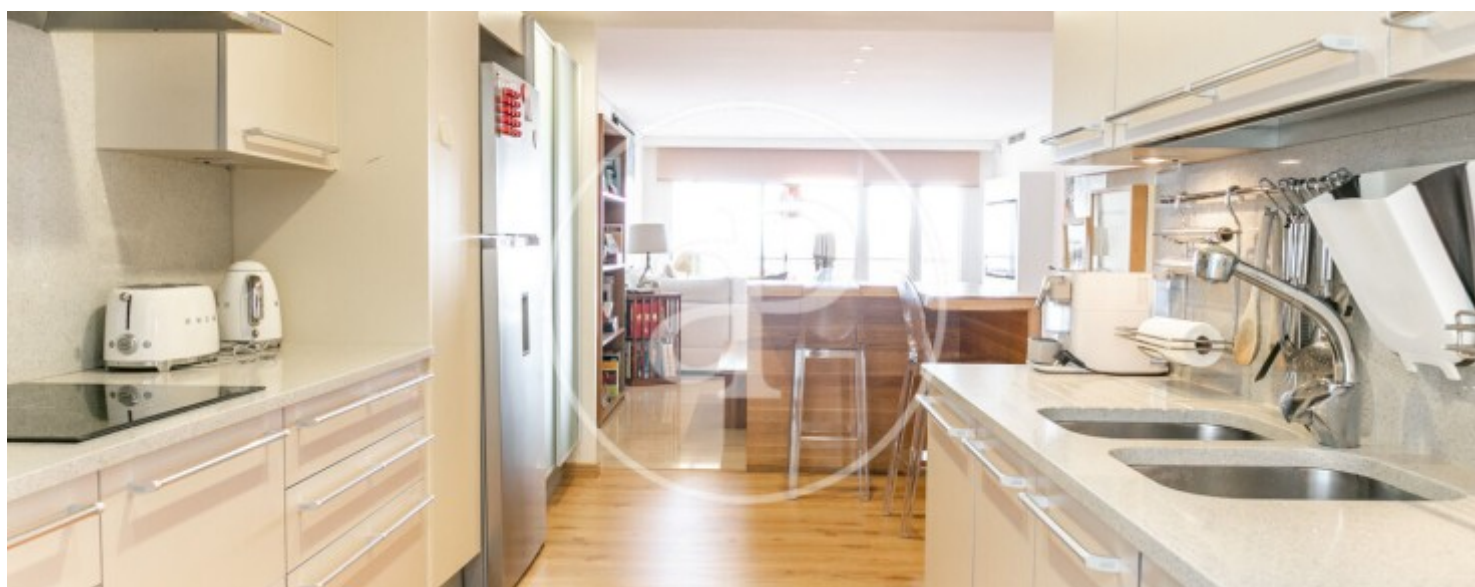
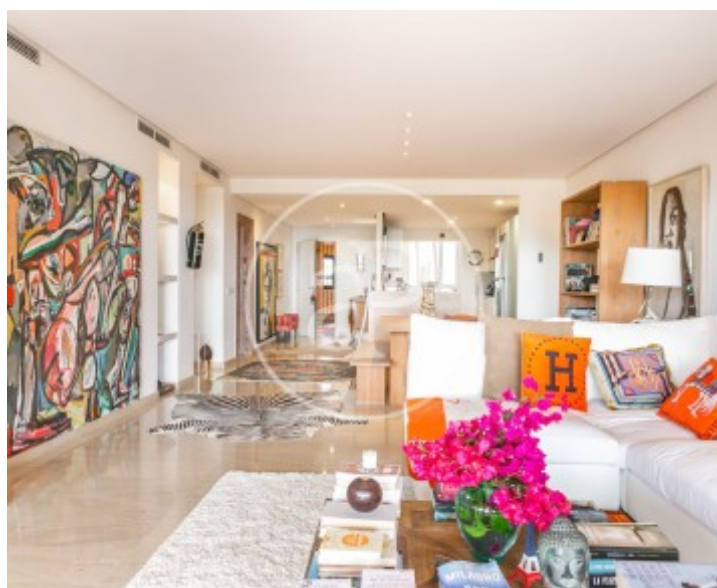
Cas Català, Calvià

REF. APMS2512009



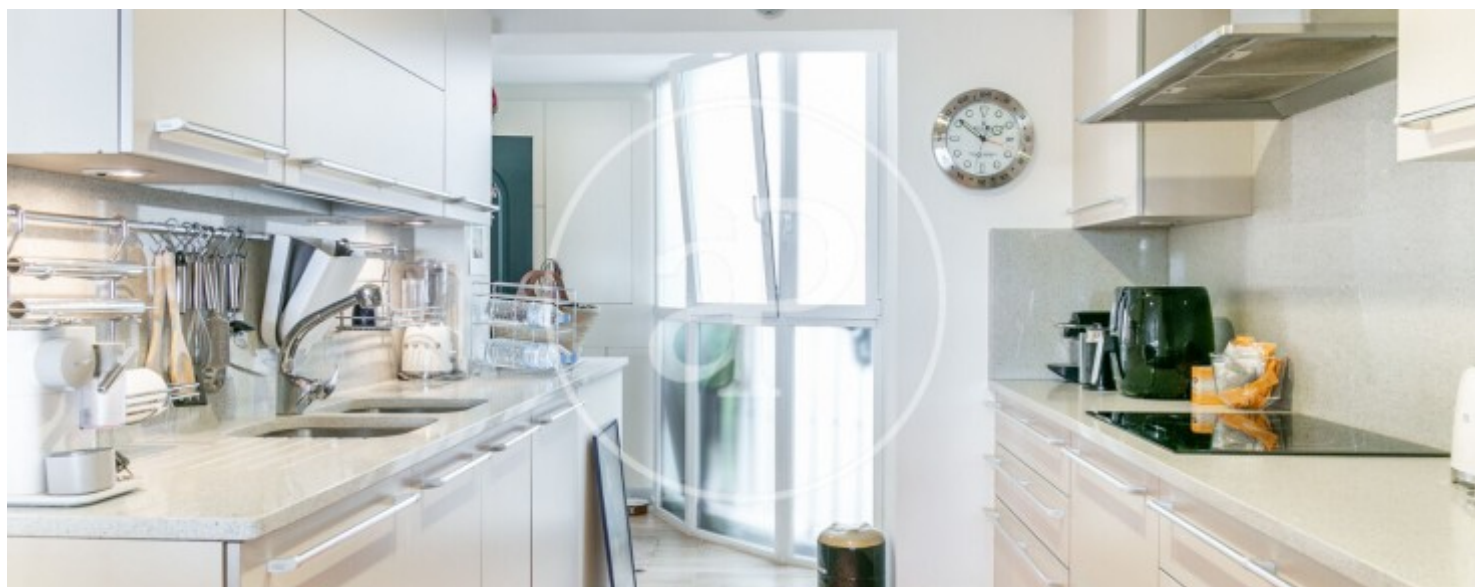
Cas Català, Calvià

REF. APMS2512009



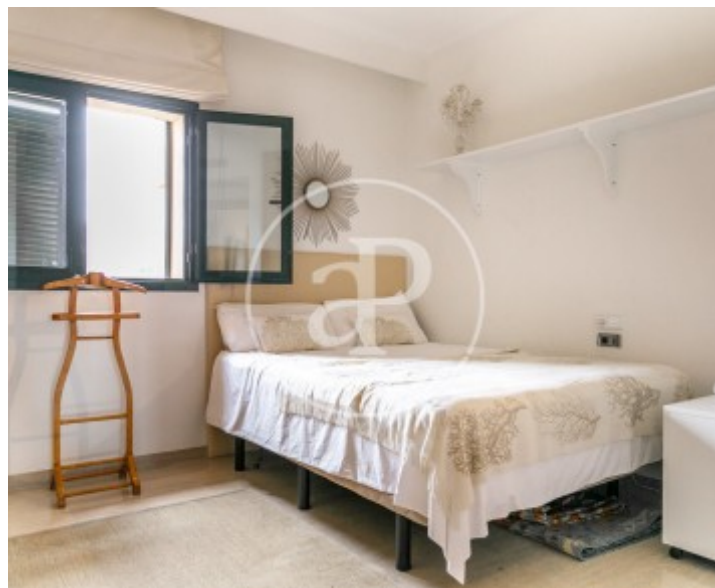
Cas Català, Calvià

REF. APMS2512009



Cas Català, Calvià

REF. APMS2512009



The information about any property is not binding to any offer or contract. Any verbal or written declaration made by aProperties with regards to the value or condition of the property should not be considered accurate or factual. The pictures make reference to some parts of the property at the times that they were taken. The areas, dimensions and distances that are given are approximate and should be checked by the client. The images are computer generated and are just an approximate indication of the real appearance of the property; these may change at any time. The information with regards to the property may also change at any time.

For **more information** or
to make an appointment

apropertiespalma@aproperties.es
Tel: 871 16 01 60
www.aproperties.es