



Calvià pueblo, Calvià

REF. VPM2602008

# Semi-detached villa for sale in the heart of Calvià

## Features

- ✓ Heating
- ✓ AACC
- ✓ Backyard
- ✓ Pool
- ✓ Has parking

Price

**1,550,000 €**

Surface

**187 m<sup>2</sup>**

Bedrooms

**3**

Bathrooms

**2**



**We are pleased to present exclusively this magnificent semi-detached villa, located in a well-maintained residential complex of only four homes in the heart of Calvià.**

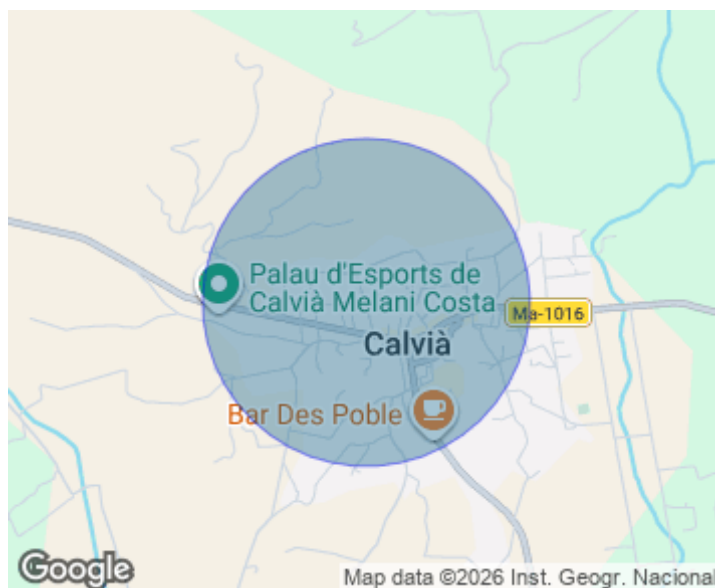
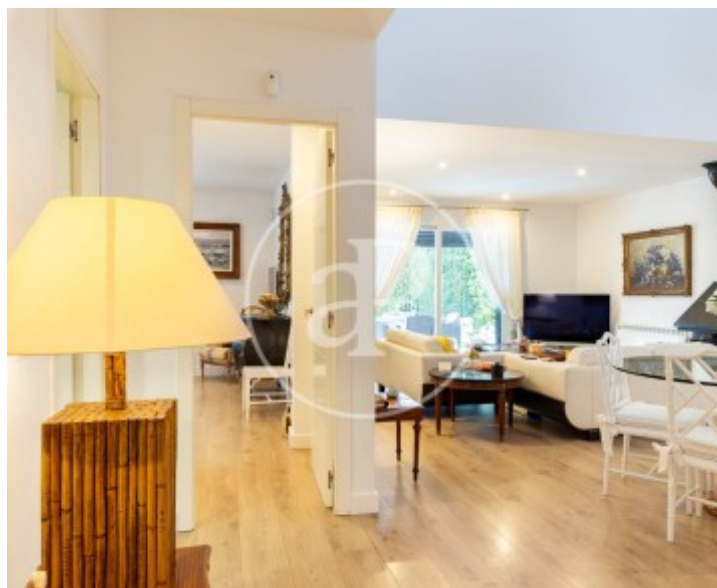
A privileged location, close to schools, medical center, library, and all services, perfectly connected and just 15 minutes from Palma. The property, with 188 m<sup>2</sup> of built space, stands out for its charm, excellent condition, and is ready to move in. It is distributed across three bedrooms and two bathrooms, with spacious areas filled with natural light. Outside, the villa offers a spectacular private garden of approximately 1,000 m<sup>2</sup>, ideal for enjoying the Mediterranean lifestyle. The

area features a private pool and a cozy southwest-facing porch, perfect for enjoying the sun all year round and pleasant outdoor evenings. Layout and spaces On the main floor: Entrance hall leading to an impressive double-height living-dining room with exposed beams and a wood-burning fireplace. Large windows that open directly onto the garden and pool, bringing in light and space. Independent, modern, and functional kitchen, fully equipped, with pantry and laundry area. Master bedroom en suite, with built-in wardrobes and garden views. Two additional double bedrooms sharing a full...

**Contact us,**  
we will be happy to assist you,  
to offer you more details and information.

Calvià pueblo, Calvià

REF. VPM2602008





Calvià pueblo, Calvià

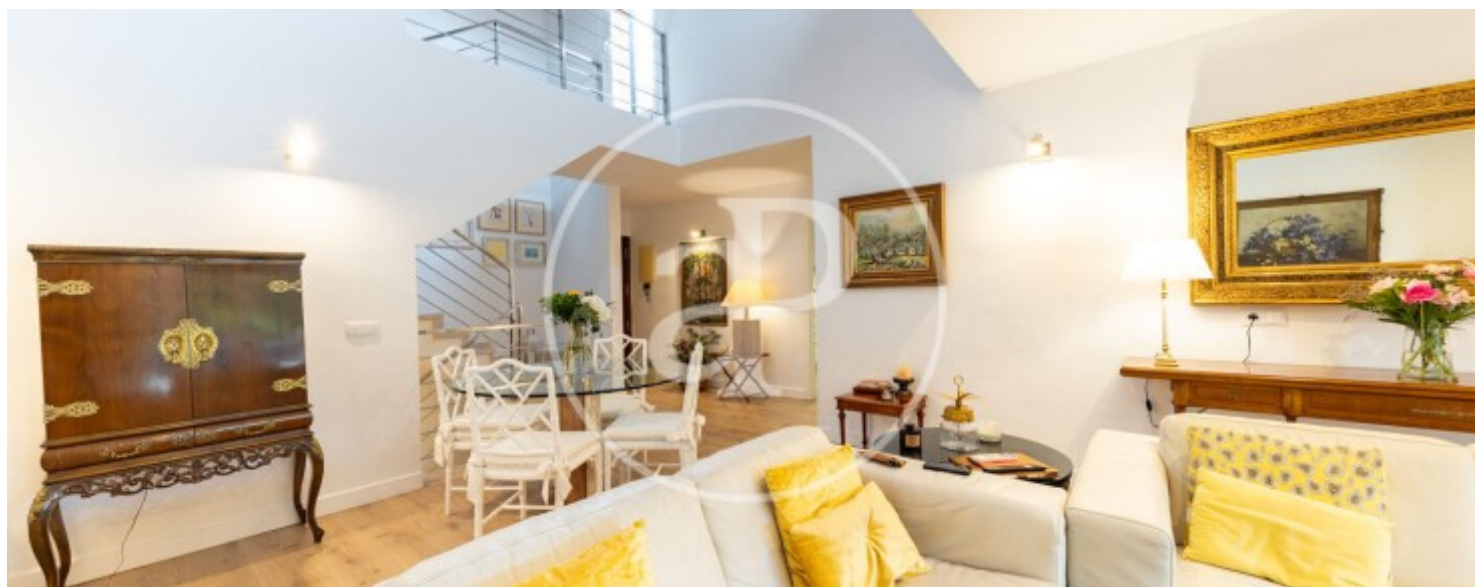
REF. VPM2602008





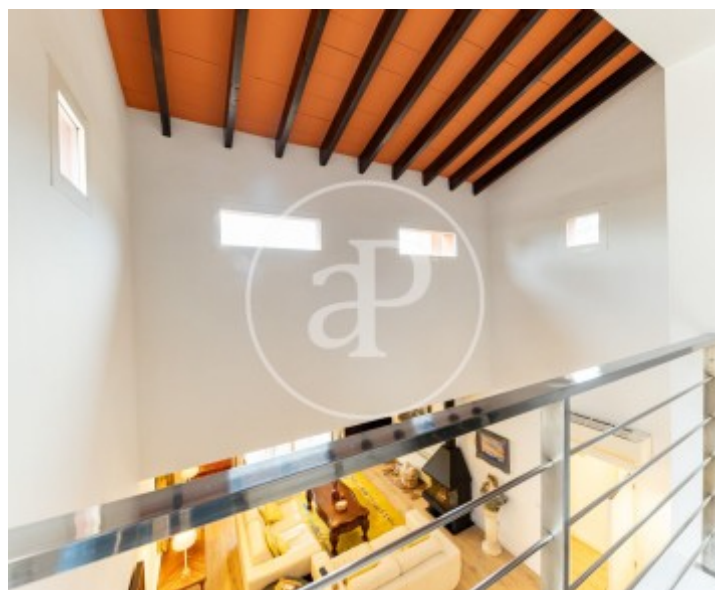
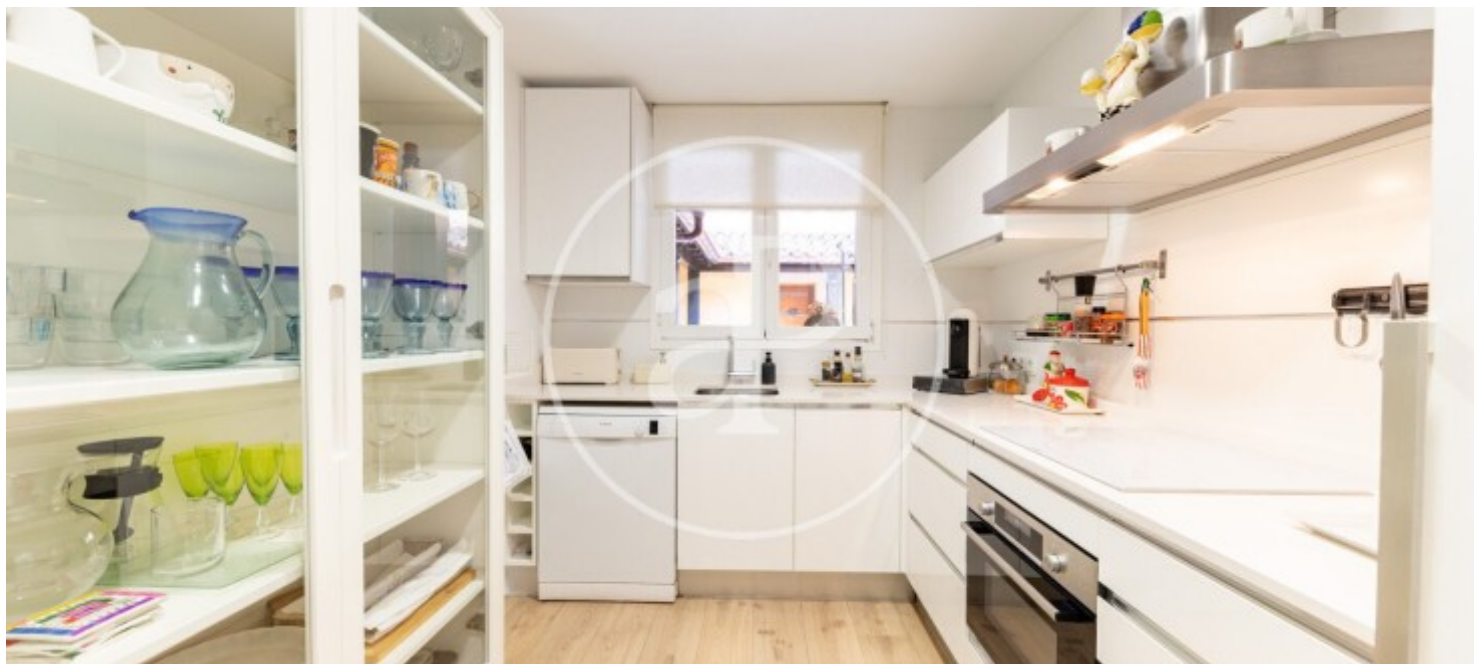
Calvià pueblo, Calvià

REF. VPM2602008



Calvià pueblo, Calvià

REF. VPM2602008



The information about any property is not binding to any offer or contract. Any verbal or written declaration made by aProperties with regards to the value or condition of the property should not be considered accurate or factual. The pictures make reference to some parts of the property at the times that they were taken. The areas, dimensions and distances that are given are approximate and should be checked by the client. The images are computer generated and are just an approximate indication of the real appearance of the property; these may change at any time. The information with regards to the property may also change at any time.

For **more information** or  
to make an appointment

[apropertiespalma@aproperties.es](mailto:apropertiespalma@aproperties.es)  
Tel: 871 16 01 60  
[www.aproperties.es](http://www.aproperties.es)