

(Burjassot)

Ref: ONV2506003



## New development for sale in Burjassot

Sustainable housing in the heart of Burjassot, Valencia aProperties presents an innovative residential project that redefines the way of living in harmony with the environment. Located in the heart of Burjassot, next to Liria Street—the city's main commercial hub—and just steps from the Town Hall and the university campus. Surrounded by green spaces such as La Granja, Los Silos, and the Huerta de Valencia, it offers all the services you need within easy reach and Metro communication. A new way of living. Live well. Live green. This residential complex offers studios and one- to three-bedroom apartments, designed for those seeking an efficient, and sustainable urban lifestyle. Every detail reflects a firm commitment to the environment: Construction using engineered wood, minimizing the use of high-carbon materials such as concrete and steel. A nearly carbon-neutral building, designed to minimize its environmental impact from the ground up. Renewable energy and the total elimination of fossil fuels, such as gas. Nature-based solutions, with planned landscaping and architecture that favors natural light in every corner. Common areas for socializing, which expand [...]

Burjassot

Unit 4 B

Completion Q4 2026

### FEATURES

Surface 79 m<sup>2</sup> / 9 m<sup>2</sup> terrace

1 Rooms

1 Toilets

- ✓ Views
- ✓ Heating
- ✓ AACC
- ✓ Terrace
- ✓ Lift
- ✓ Has parking

Price 317,000 €



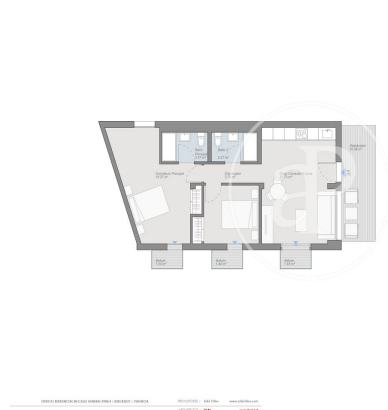
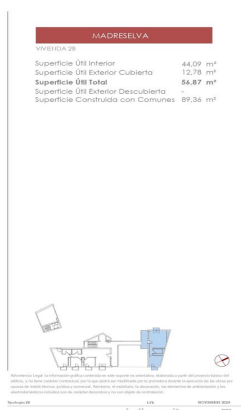
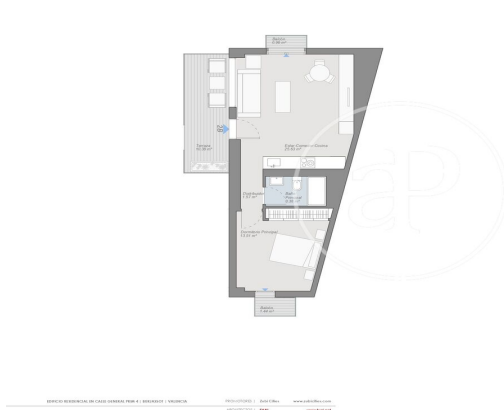
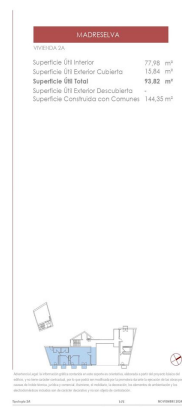
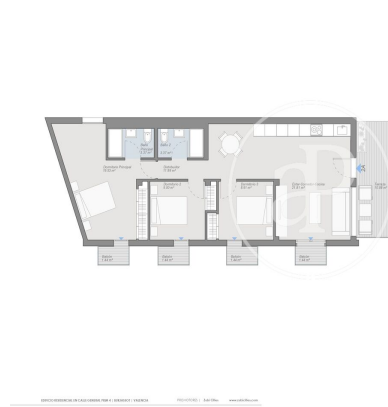
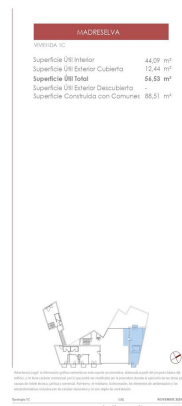
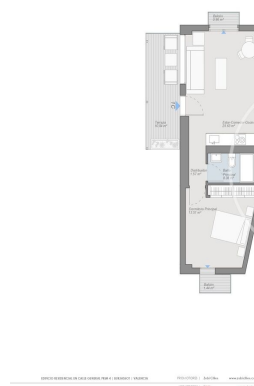
(Burjassot)

Ref: ONV2506003



(Burjassot)

Ref: ONV2506003





(Burjassot)

Ref: ONV2506003



**MADRIDELVA**  
SUPERFICIE 36  
Superficie Útil Interior 39.20 m²  
Superficie Útil Exterior Cubierta 12.45 m²  
Superficie Útil Total 51.65 m²  
Superficie Útil Exterior Descubierta  
Superficie Construida con Comunes 77.74 m²



**MADRIDELVA**  
SUPERFICIE 36  
Superficie Útil Interior 79.85 m²  
Superficie Útil Exterior Cubierta 6.74 m²  
Superficie Útil Total 86.59 m²  
Superficie Útil Exterior Descubierta  
Superficie Construida con Comunes 137.23 m²



**MADRIDELVA**  
SUPERFICIE 44  
Superficie Útil Interior 88.40 m²  
Superficie Útil Exterior Cubierta 9.93 m²  
Superficie Útil Total 98.33 m²  
Superficie Útil Exterior Descubierta 4.32 m²  
Superficie Construida con Comunes 107.17 m²



The information about any property is not binding to any offer or contract. Any verbal or written declaration made by aProperties with regards to the value or condition of the property should not be considered accurate or factual. The pictures make reference to some parts of the property at the times that they were taken. The areas, dimensions and distances that are given are approximate and should be checked by the client. The images are computer generated and are just an approximate indication of the real appearance of the property; these may change at any time. The information with regards to the property may also change at any time.

Contact us today for more information or to arrange a viewing

Tel: 96 128 59 65 [apropertiesvalencia@aproperties.es](mailto:apropertiesvalencia@aproperties.es) <https://www.aproperties.es>